

INSTALLATION INSTRUCTIONS

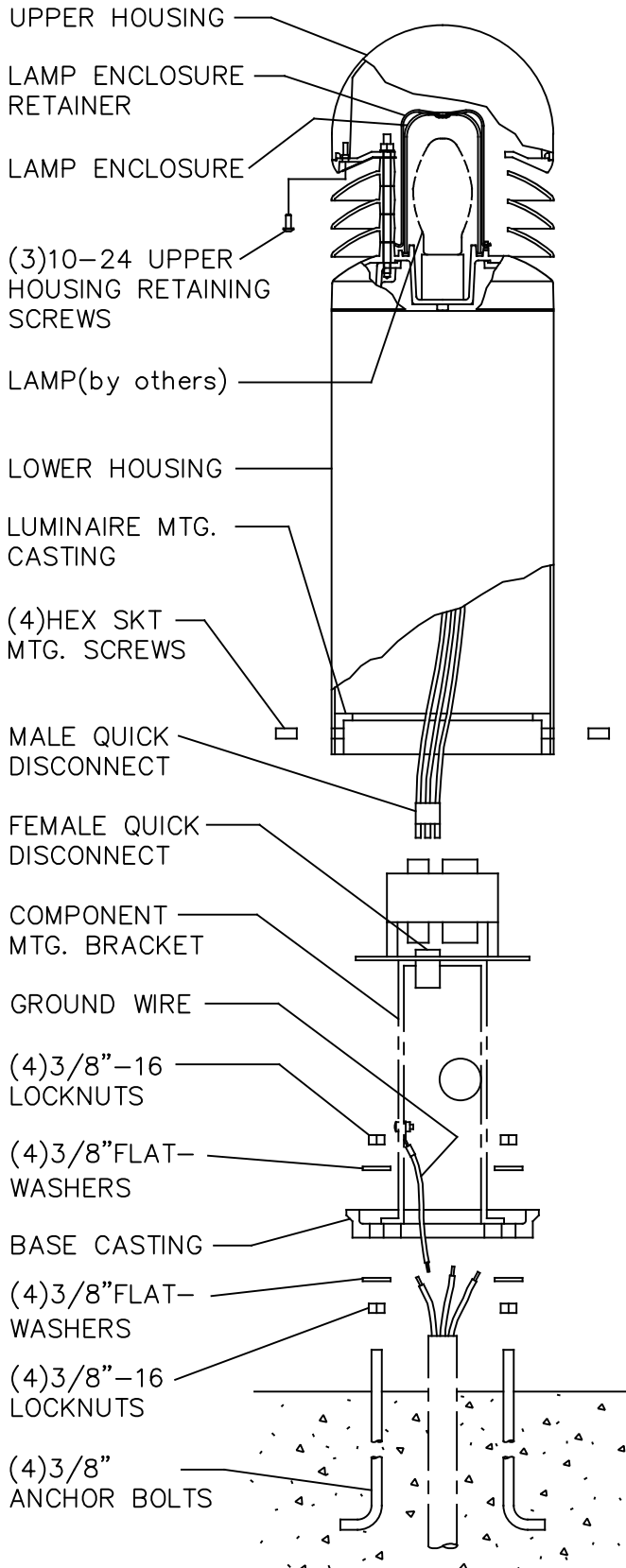
PHILIPS



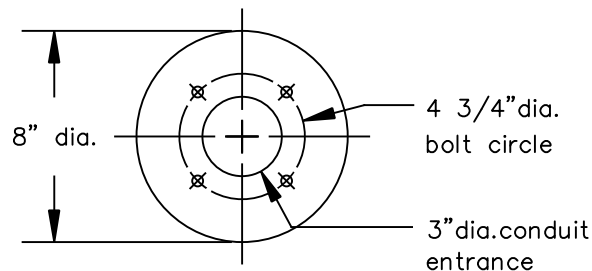
LOUVERED BOLLARD SERIES BRM820

IMPORTANT! Be sure electrical power is off before installing luminaire.

INSTALLATION PROCEDURE



1. Install (4) 3/8" anchor bolts in concrete foundation utilizing template provided. Ensure bolts project 1 1/2" above concrete surface. Conduit projection: 3" maximum.
2. Remove luminaire from shipping container and loosen (4) hex skt mtg set screws installed in luminaire mounting casting.
3. Remove base casting and component mounting bracket assembly from inside luminaire lower housing.
4. Install the base casting and component bracket assembly on the anchor bolts, positioning lock-nuts and flatwashers above and below the casting. Level by adjusting the lower nuts and secure in position by tightening the upper nuts.
5. Ensuring power to luminaire is off, connect supply ground wire to ground wire located on component mounting bracket.
6. Connect supply leads to ballast primary leads.
7. Place luminaire housing over component bracket assembly and insert male quick disconnect receptacle extending from luminaire base into female receptacle.
8. Lower luminaire housing over component bracket and base assembly until bottom surface of luminaire mounting casting rests flush with top surface of base casting.
9. Tighten (4) hex skt set screws securely.
10. Loosen (3) 10-24 upper housing retaining screws two full turns with 1/8" ball driver. Rotate upper housing counterclockwise slightly and remove upper housing.
11. Grasp lamp enclosure and swing lamp enclosure retainer and remove lamp enclosure.
12. Install lamp(by others) of proper type and wattage.
13. Reinstall lamp enclosure.
14. Reinstall upper housing and tighten (3) retaining screws.
15. Luminaire installation is complete. Luminaire may be energized.



BASE DETAIL

PHILIPS