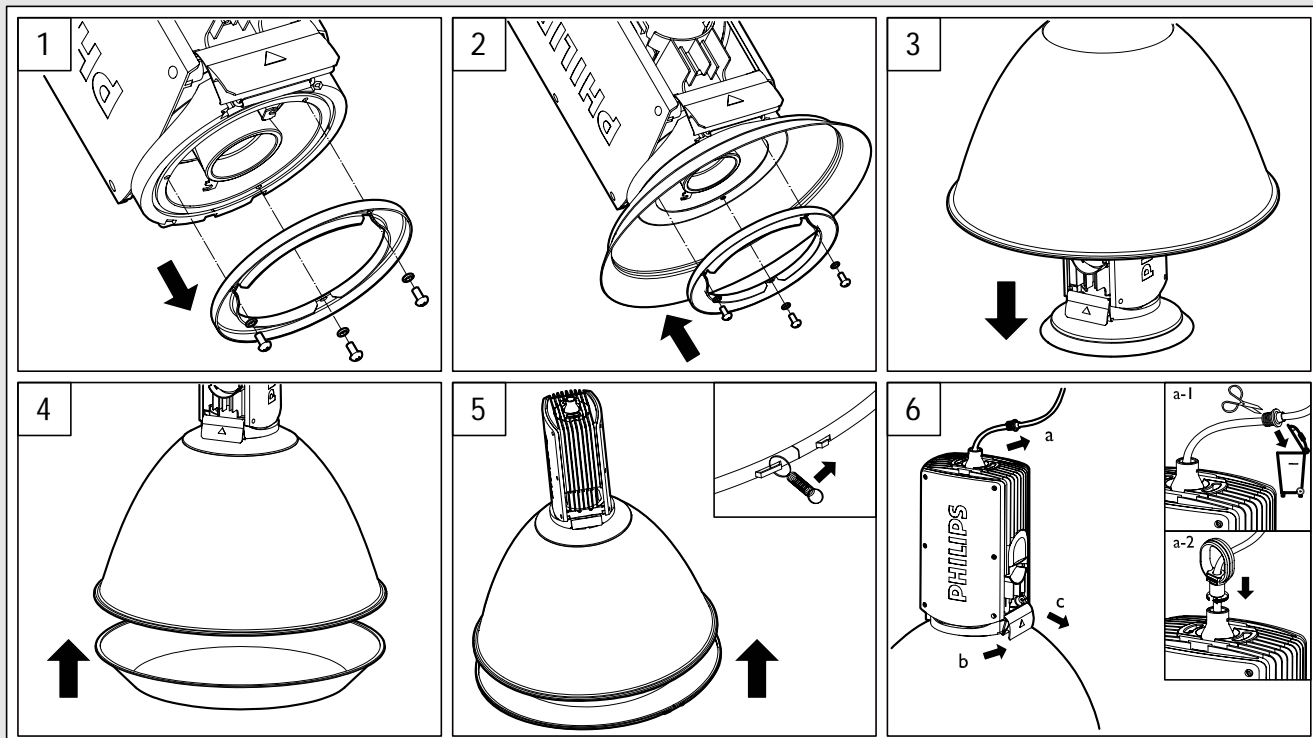
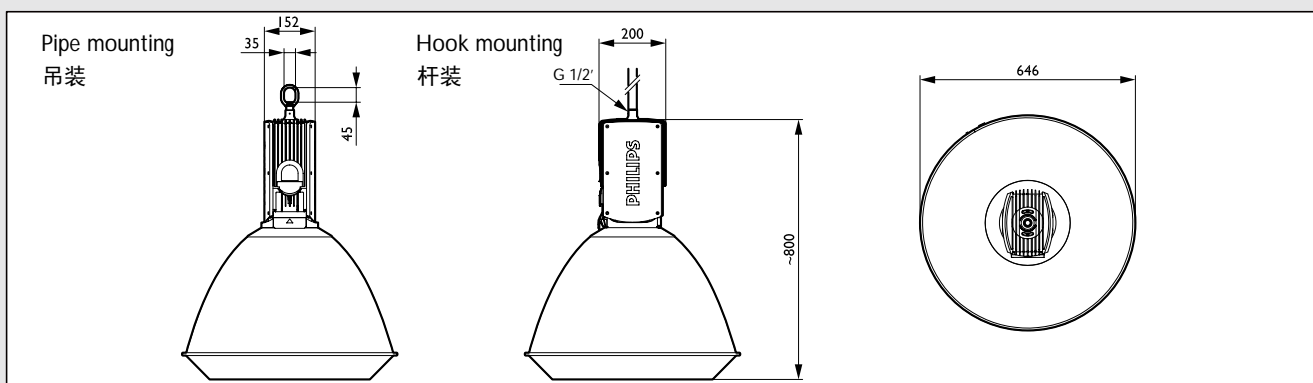




Type No. 型号	Lamp 光源	Class& IP	m²	kg
HPK888	SON 250W	Class 1/ IP20 / Gear box IP 66	0.08m²	14
HPK888	SON 400W	Class 1/ IP20 / Gear box IP 66	0.08m²	18
HPK888	HPL 250W/ HPI 250W BU	Class 1/ IP20 / Gear box IP 66	0.08m²	16.5
HPK888	HPL 400W/ HPI 400W BUS	Class 1/ IP20 / Gear box IP 66	0.08m²	17.5



1. Cut the power off before changing the lamps!  
更换光源前请断开电源!
2. To avoid the danger, when the outer cable was broken, it must be changed by the supplier or their agent or a qualified people.  
为了避免危险，当外部电线损坏时，请由专业安装人员或供应商进行更换。
3. This luminaire is only suitable for indoor usage. And not suitable for the corrosive environment and area prone to hurricane and extreme winds.  
本灯具仅限于室内使用，且不适合安装在会产生酸性碱性腐蚀的环境及海边、港口等强台风多发地区。
4. The luminaire shall only be used complete with its protective shield.  
灯具应只能完整地带有防护罩使用。

