

PRE—INSTALLATION INSTRUCTIONS

111,113,114 EM EMERGENCY SCONCE

IMPORTANT SAFEGUARDS

1. READ AND FOLLOW ALL SAFETY INSTRUCTIONS.
2. DO NOT MOUNT NEAR GAS OR ELECTRIC HEATERS.
3. EQUIPMENT SHOULD BE MOUNTED IN LOCATIONS AND AT HEIGHTS WHERE IT WILL NOT READILY BE SUBJECTED TO TAMPERING BY UNAUTHORIZED PERSONNEL.
4. THE USE OF ACCESSORY EQUIPMENT NOT RECOMMENDED BY THE MANUFACTURER MAY CAUSE AN UNSAFE CONDITION.
5. DO NOT USE THIS EQUIPMENT FOR OTHER THAN INTENDED USE.

SAVE THESE INSTRUCTIONS

NOTICE

IF THIS LUMINAIRE IS PART OF THE FACILITY'S EMERGENCY LIGHTING SYSTEM AND IS INTENDED TO ILLUMINATE THE MEANS OF EGRESS AS REQUIRED BY THE LIFE SAFETY CODE OR INTERNATIONAL BUILDING CODE, THE LUMINAIRE SHOULD BE ORIENTATED TO ENSURE THAT SUFFICIENT LIGHT FOR THE PURPOSE REACHES THE FLOOR.

CAUTION — ALL SERVICING SHOULD BE PERFORMED BY QUALIFIED PERSONNEL.

INSTALLATION INSTRUCTIONS

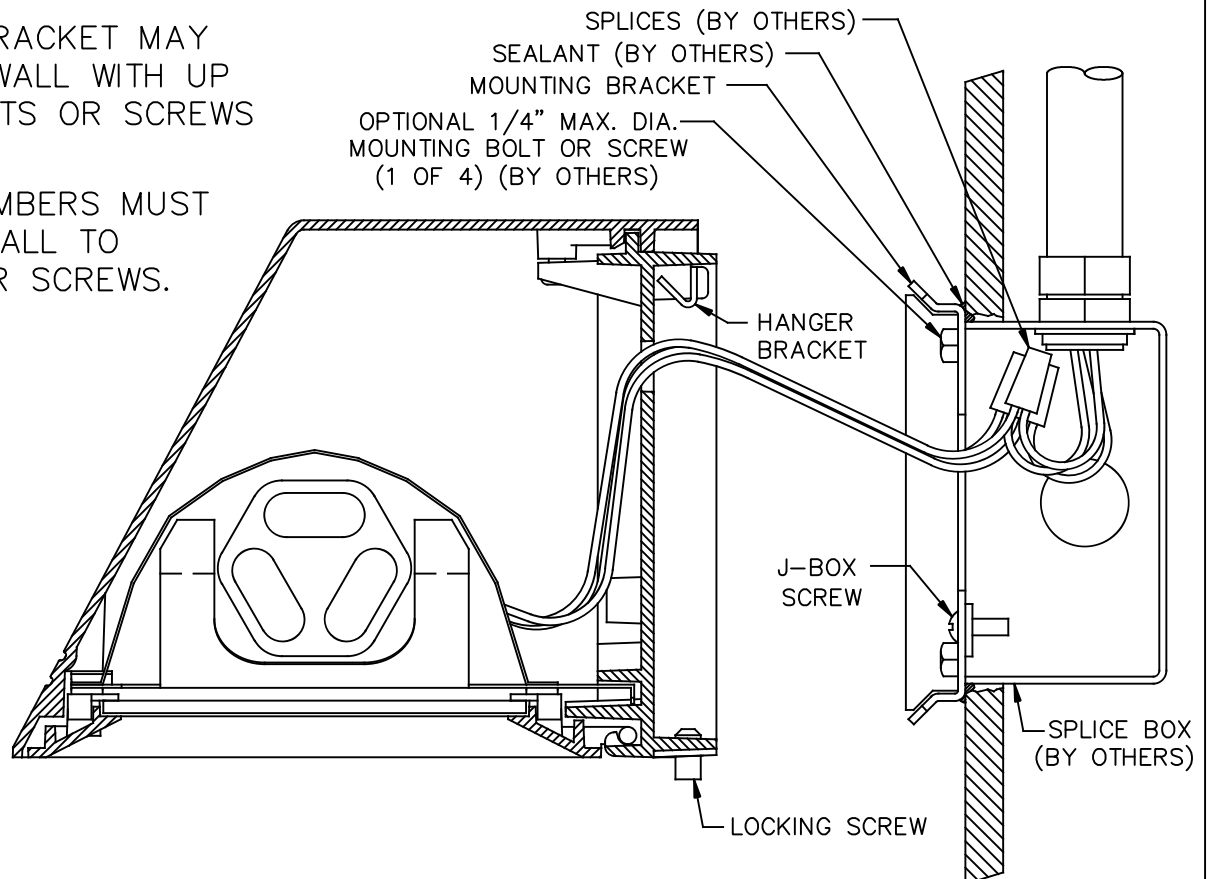
111, 113, 114 EM EMERGENCY SCONCE

IMPORTANT: READ ALL INSTRUCTIONS BEFORE PERFORMING ANY WORK.
BE SURE ALL POWER IS OFF PRIOR TO INSTALLING LUMINAIRE.

WARNING: LUMINAIRE MUST BE GROUNDED IN ACCORDANCE WITH
APPROPRIATE CODES. FAILURE TO DO SO MAY RESULT IN
SERIOUS INJURY.

NOTE: MOUNTING BRACKET MAY
BE SECURED TO WALL WITH UP
TO 1/4" DIA. BOLTS OR SCREWS
(BY OTHERS).

STRUCTURAL MEMBERS MUST
BE PRESENT IN WALL TO
ACCEPT BOLTS OR SCREWS.



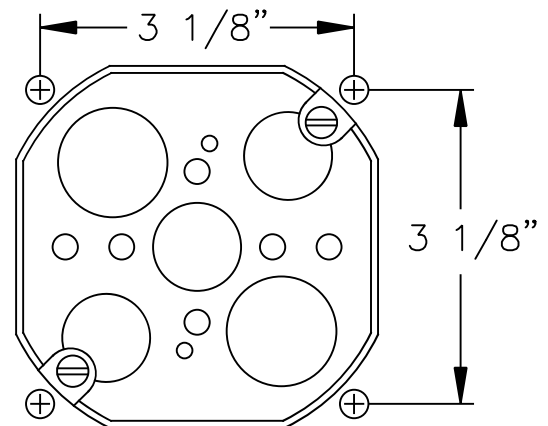
1. APPLY A BEAD OF SEALANT ON WALL AROUND
SPLICE BOX OPENING AND AROUND HOLES USED
FOR OPTIONAL MOUNTING BOLTS OR SCREWS.

WHEN USING A 4" OCTAGONAL BOX (SHOWN),
FILL GAP BETWEEN WALL OPENING AND SPLICE
BOX WITH SEALANT.

APPLY SEALANT TO THE TOP INSIDE
CORNERS OF THE MOUNTING BRACKET.

2. PLACE MOUNTING BRACKET OVER SPLICE
BOX, LEVEL AND SECURE WITH J-BOX SCREWS.

FOR ADDITIONAL SECURITY, BOLTS OR
SCREWS UP TO 1/4" DIAMETER MAY BE USED.



MOUNTING PATTERN FOR
OPTIONAL BOLTS

4" OCTAGONAL BOX (BY OTHERS)
SHOWN FOR REFERENCE

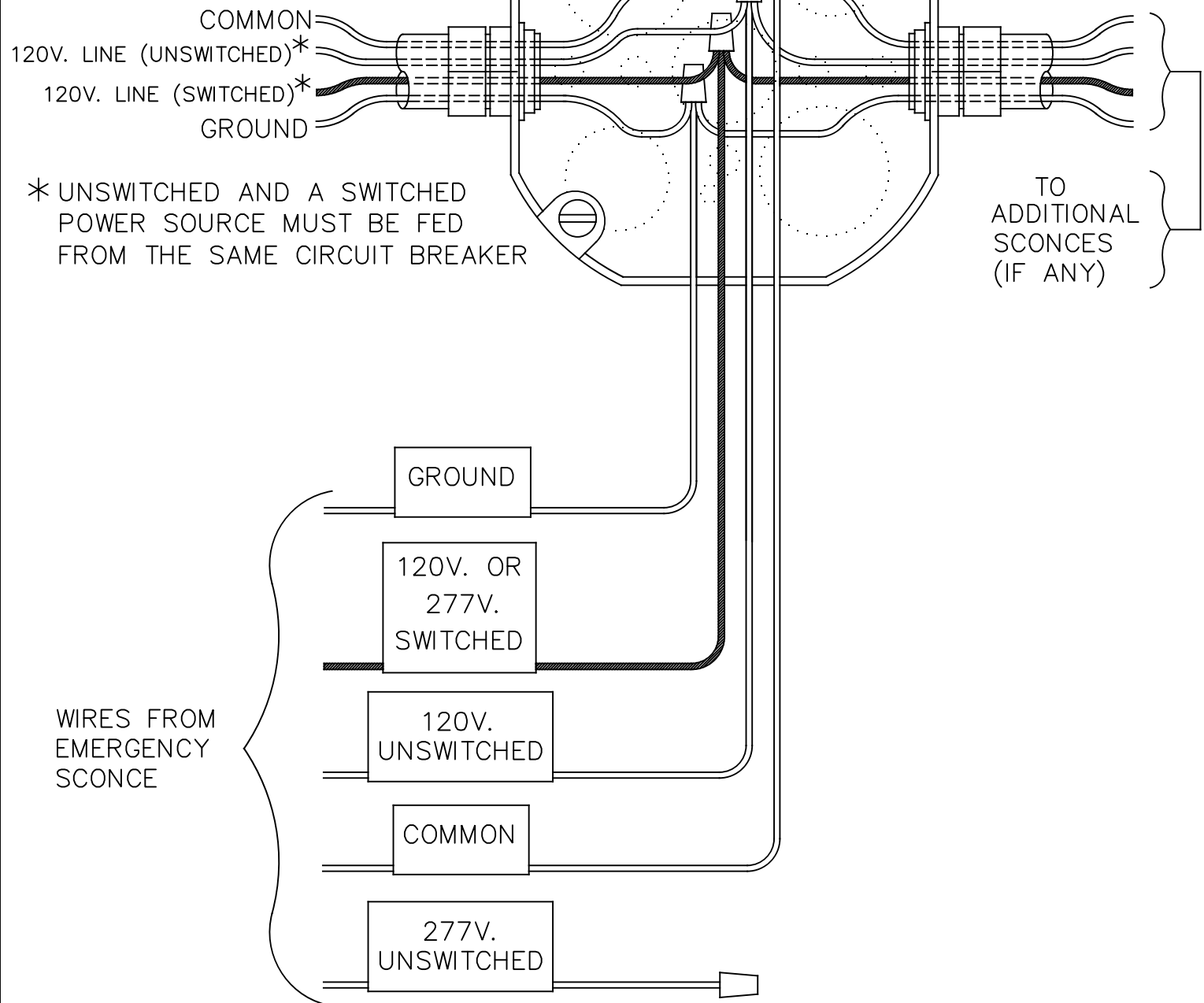
INSTALLATION INSTRUCTIONS

111, 113, 114 EM EMERGENCY SCONCE

3. MAKE ELECTRICAL CONNECTIONS. SEE WIRING DIAGRAMS 1 THRU 4.

WIRING DIAGRAM #1 FOR 120V. SUPPLY

ALLOWS SCONCE TO BE SWITCHED
DURING NORMAL OPERATION.
(LAMP WILL ILLUMINATE WHEN
POWER IS INTERRUPTED.)

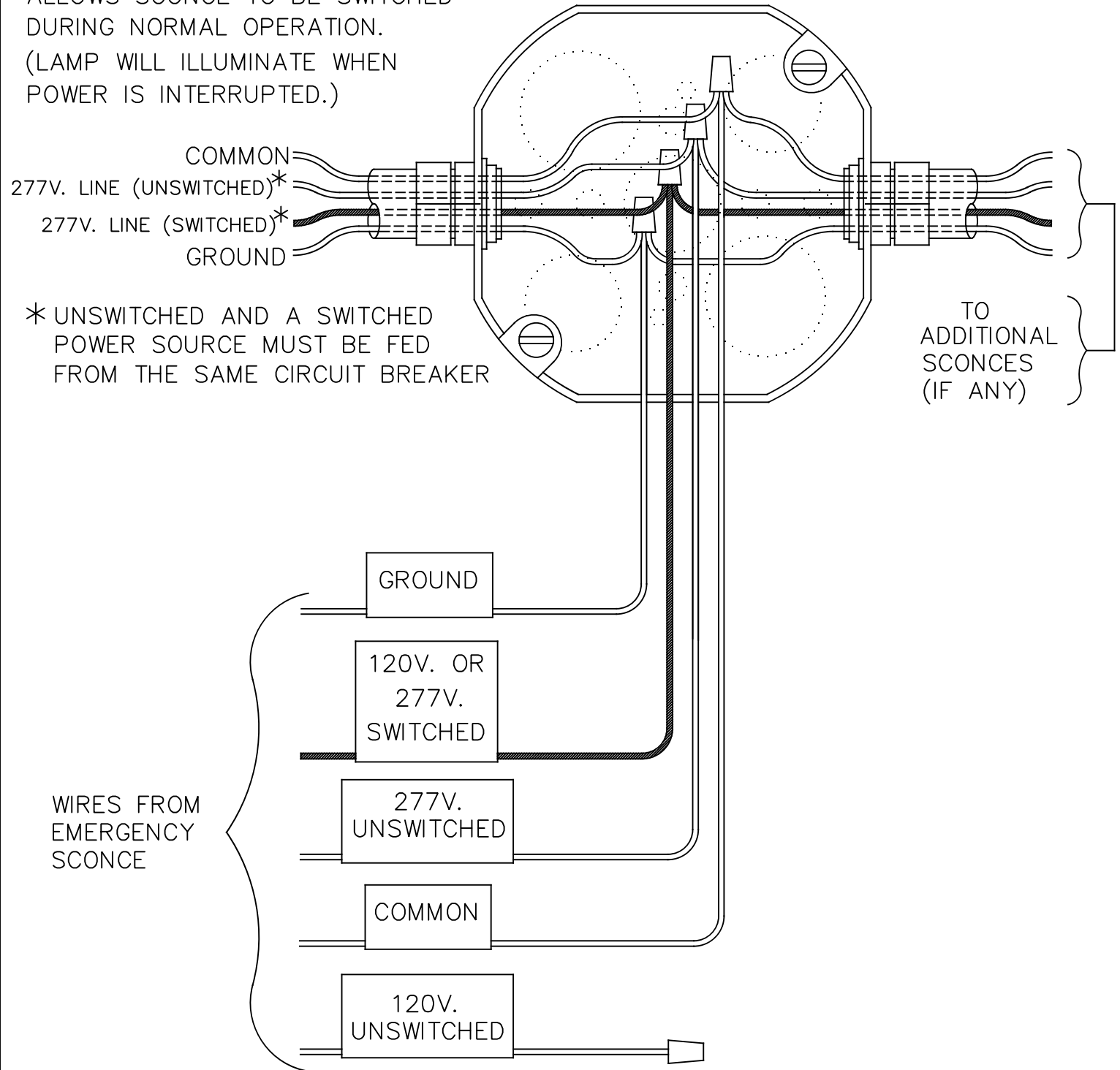


INSTALLATION INSTRUCTIONS

111, 113, 114 EM EMERGENCY SCONCE

WIRING DIAGRAM #2 FOR 277V. SUPPLY

ALLOWS SCONCE TO BE SWITCHED
DURING NORMAL OPERATION.
(LAMP WILL ILLUMINATE WHEN
POWER IS INTERRUPTED.)

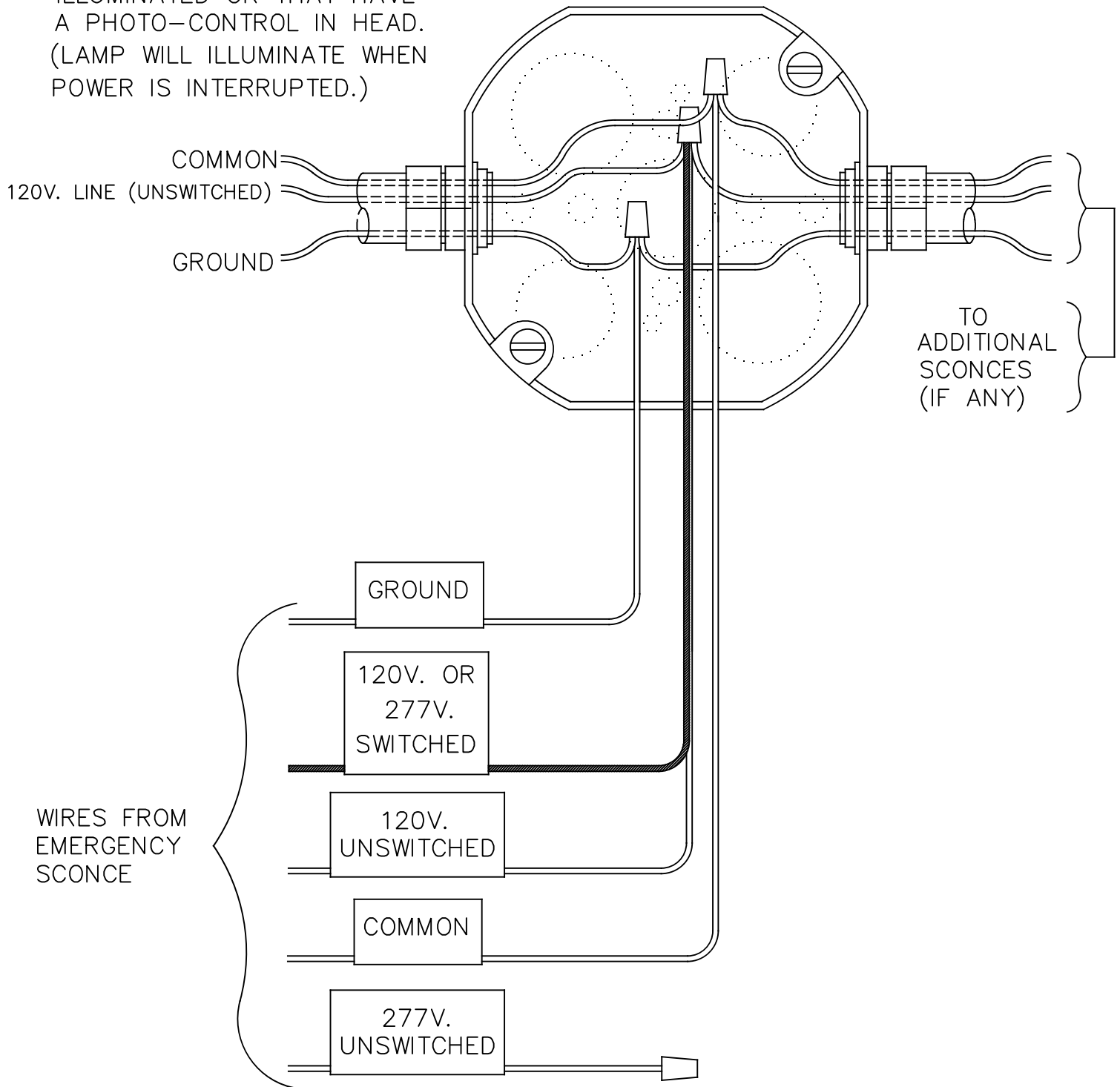


INSTALLATION INSTRUCTIONS

111, 113, 114 EM EMERGENCY SCONCE

WIRING DIAGRAM #3 FOR 120V. SUPPLY

FOR SCONCES CONSTANTLY
ILLUMINATED OR THAT HAVE
A PHOTO-CONTROL IN HEAD.
(LAMP WILL ILLUMINATE WHEN
POWER IS INTERRUPTED.)

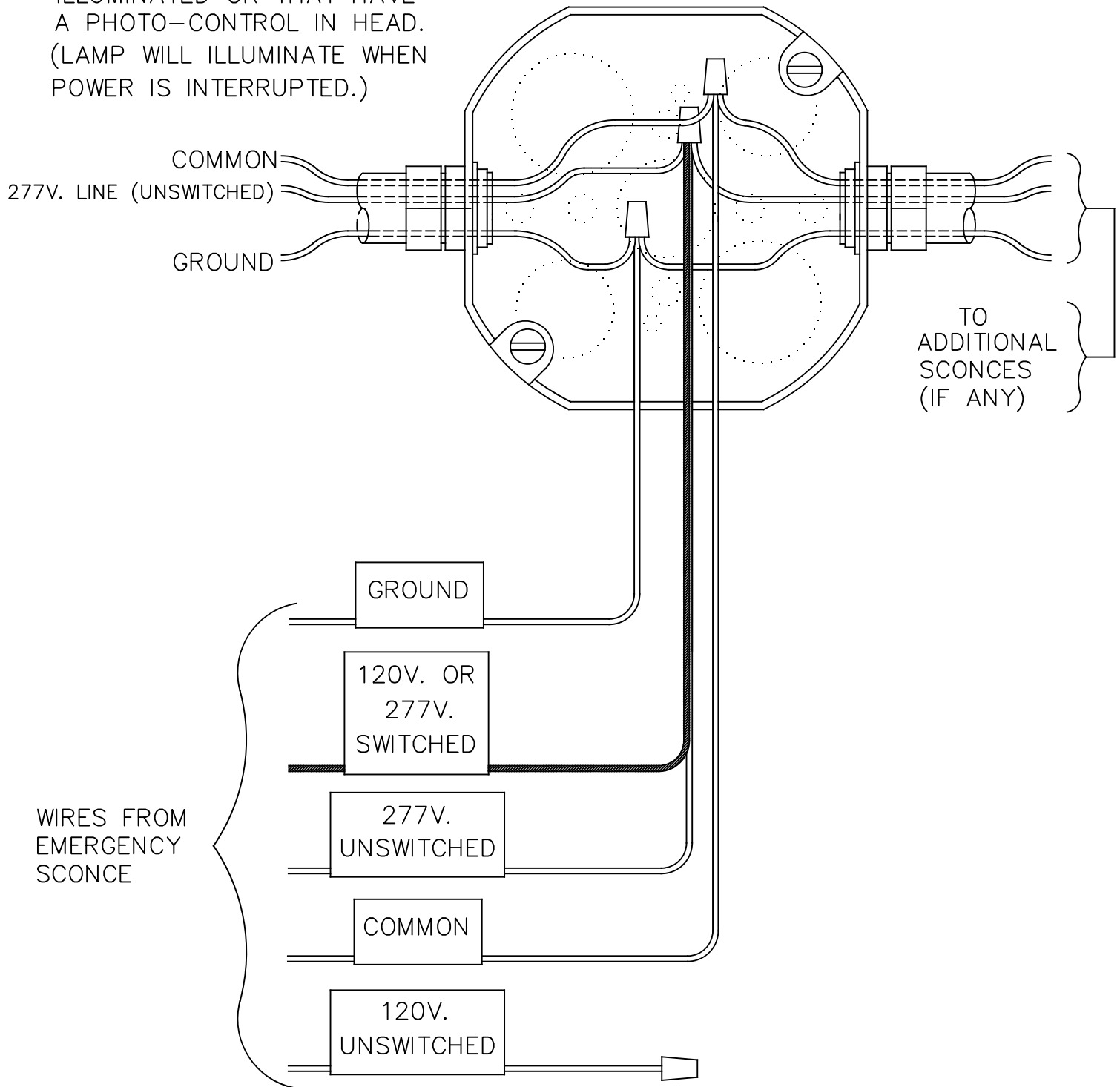


INSTALLATION INSTRUCTIONS

111, 113, 114 EM EMERGENCY SCONCE

WIRING DIAGRAM #4 FOR 277V. SUPPLY

FOR SCONCES CONSTANTLY
ILLUMINATED OR THAT HAVE
A PHOTO-CONTROL IN HEAD.
(LAMP WILL ILLUMINATE WHEN
POWER IS INTERRUPTED.)



INSTALLATION INSTRUCTIONS

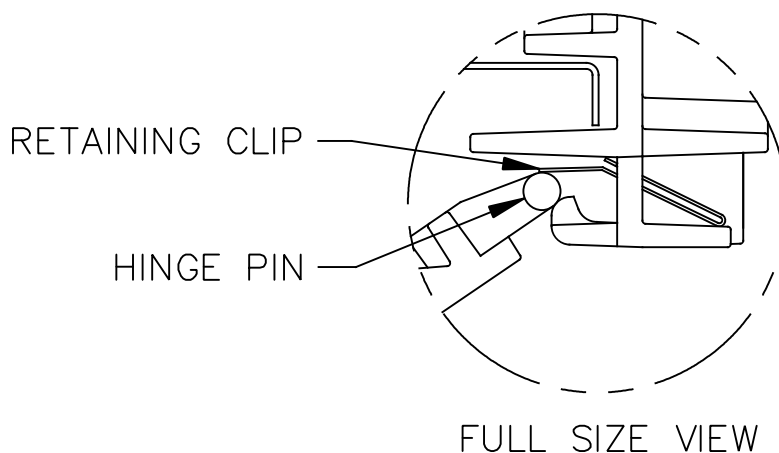
111, 113, 114 EM EMERGENCY SCONCE

4. PLACE SPLICES AND EXCESS WIRE IN SPLICE BOX. CAREFULLY ENGAGE HANGER BRACKET TO MOUNTING BRACKET BEING CAREFUL NOT TO PINCH WIRES. ALLOW SCONCE TO REST AGAINST WALL. TIGHTEN LOCKING SCREWS.

5. UNSCREW LENS FRAME SCREWS AND OPEN FRAME. REMOVE AND RETAIN THE TWO SCREWS SECURING THE REFLECTOR ASSEMBLY AND REMOVE THE ASSEMBLY. LOCATE THE TWO SINGLE CONTACT PLUG AND RECEPTACLE OF THE INVERTER CONNECTOR AND JOIN THEM. PLACE THE JOINED CONNECTOR BETWEEN THE COMPONENT BRACKET AND THE MOUNTING CASTING.

REPLACE REFLECTOR ASSEMBLY, INSTALL LAMP, CLOSE AND SECURE FRAME BEING CAREFUL NOT TO OVER TIGHTEN THE SCREWS.

NOTE: LENS FRAME ASSEMBLY IS REMOVABLE BY OPENING PARTIALLY, COMPRESSING RETAINING CLIPS WITH HINGE PIN OF FRAME AND PULLING FORWARD. (SEE FULL SIZE VIEW)



TESTING EMERGENCY LUMINAIRE

1. WITH POWER APPLIED TO THE UNSWITCHED LINE, THE RED CHARGING LAMP LOCATED BEHIND THE SCONCE LENS SHOULD BE ILLUMINATED.
2. AFTER ONE HOUR OF CHARGING, A SHORT TERM TEST CAN BE DONE BY OPENING THE LENS FRAME AND PRESSING THE "TEST" BUTTON. THE FLUORESCENT LAMP SHOULD ILLUMINATE AT REDUCED OUTPUT.
3. AFTER 24 HOURS OF OPERATION, A LONG TERM TEST CAN BE DONE BY REMOVING ALL POWER. THE FLUORESCENT LAMP SHOULD OPERATE AT REDUCED OUTPUT FOR AT LEAST 90 MINUTES.

