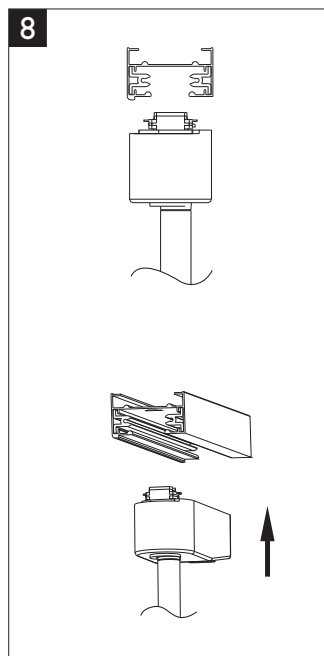
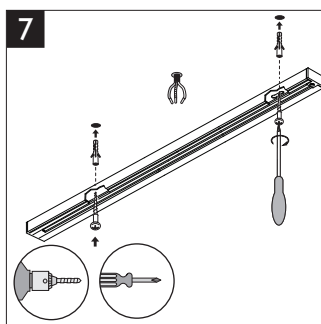
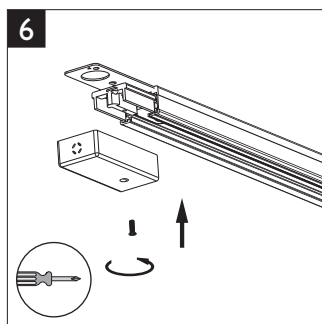
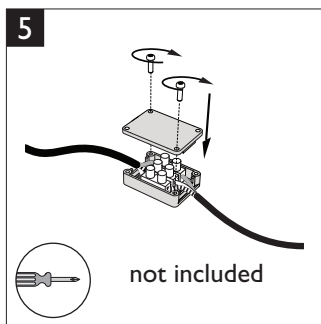
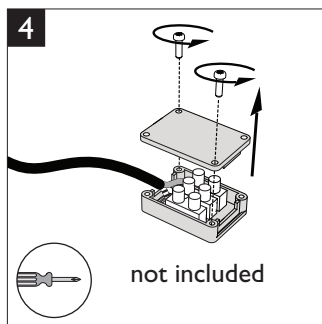
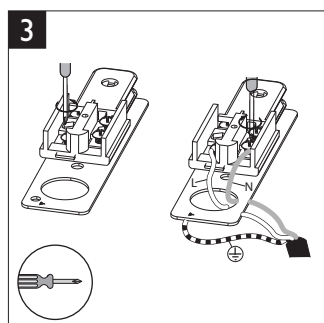
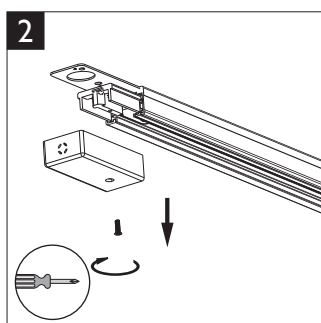
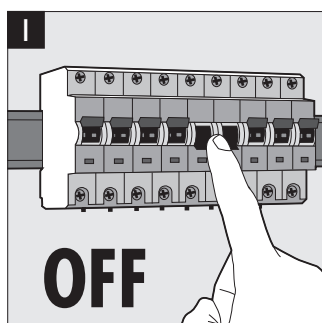
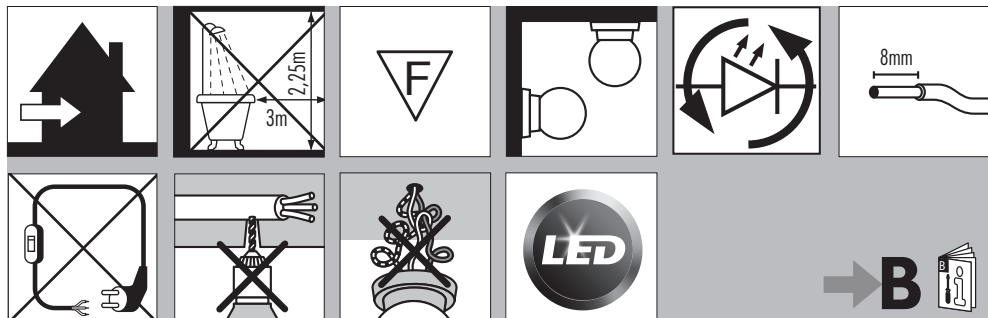




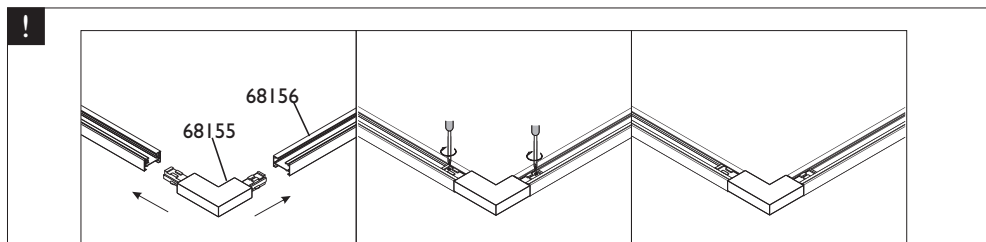
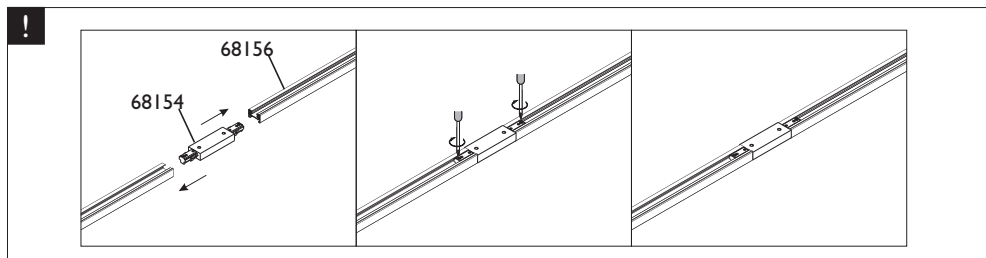
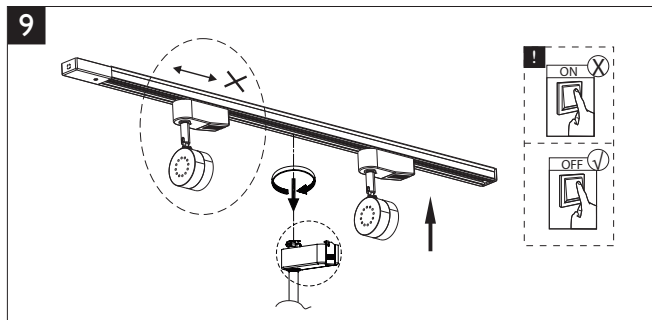
PHILIPS

4404.029.0260 I

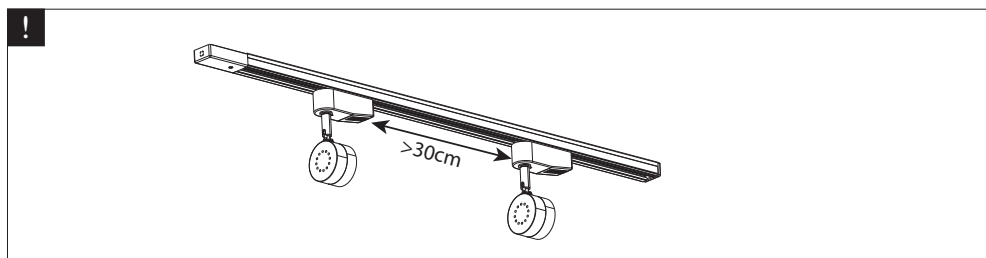
Last update: 10/12/15



PHILIPS



The track 68156 is only used with connector couple 68154 or 68155

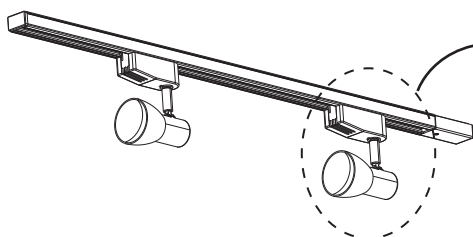




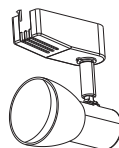
$\leq 4\text{pcs}$



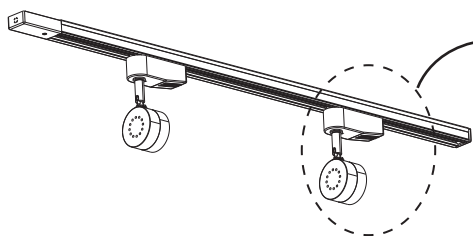
68150



68152



68151



68153



The track 68156 is only used with lampheads 68152 or 68153



1. No other attachment except the luminaire and the accessories.
2. The Max. permission temperature of the track should be less than 60 °C.
3. For each track, the Maximum mechanical loading is 1.8Kg, including the weight of the luminaires.
4. The systems (components) are unsuitable for connection of inductive loads.

PHILIPS

PHILIPS LIGHTING (CHINA) INVESTMENT CO., LTD.
BUILDING NO. 9, LANE 888, TIANLIN ROAD,
MINHANG DISTRICT, SHANGHAI, CHINA, 200233
飞利浦照明（中国）投资有限公司
中国上海市闵行区田林路888弄9号楼，邮编：200233