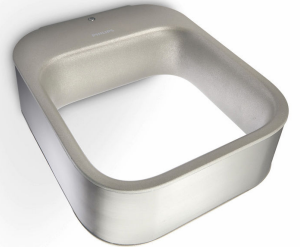




PHILIPS
myGarden
Wall light
Moonbow
inox
LED



16449/47/16



Enjoy a beautiful garden with light

The Philips myGarden Moonbow wall light with brushed stainless steel look lights up from inside with advanced LEDs. The contemporary loop design in aluminum catches the eye and throws beautiful light against your wall.

Sustainable light solutions

- Energy saving
- High quality LED light
- Long operating life up to 15 years
- Warm white light
- Philips offers 5 year warranty on the LED module and driver

Designed for your garden

- IP44 - weather proof

PHILIPS

Highlights

Energy saving



This Philips energy saving lamp conserves energy compared to traditional light sources, helping you to save money on your electricity bills and do your bit for the environment.

High quality LED light



The LED technology, integrated into this Philips lamp, is a uniquely developed solution by Philips. While instantly turned on, it enables an optimal light output and brings out vivid colors in your home.

Long operating life



A light source you can trust. The integrated LEDs, used in this Philips LED lamp, will last up to 15.000 hours (which equals 15 years on basis of an average use of 3 hours / day with an amount of at least of 13.000 on/off switching cycles). It feels so comfortable to think that you won't have to worry about maintenance or light bulb replacement while having the perfect light ambiance in your home.

Warm white light



Light can have different color temperatures, indicated in units called Kelvin (K). Lamps with a low Kelvin value produce a warm, more cosy light, while those with a higher Kelvin value produce a cool, more energising light. This Philips lamp offers warm white light for a cosy atmosphere.

5 year warranty on LED system



On top of the standard 2 year warranty for this lamp, Philips offers 5 year warranty on the LED system, meaning the LED module and the driver in this lamp.

IP44 - weather proof



This Philips outdoor light is especially designed for humid outdoor environments. It was tested rigorously to ensure its water resistance. The IP level is described by two figures: the first one refers to the protection level against dust, the second against water. This outdoor light is designed with IP44: it is protected against splashing water, this product is most common and ideal for general outdoor use.

Specifications

Design and finishing

- Color: inox
- Material: aluminium, stainless steel

Extra feature/accessory incl.

- 5 years warranty on the LED module: Yes
- Fully weatherproof: Yes

Miscellaneous

- Especially designed for: Garden & Patio
- Style: Contemporary
- Type: Wall light
- EyeComfort: Yes

Power consumption

- Energy Efficiency Label: A++

Product dimensions & weight

- Height: 5.6 cm
- Length: 16 cm
- Net weight: 0.660 kg
- Width: 19.1 cm

Service

- Warranty: 5 year(s)

Technical specifications

- Lifetime up to: 25,000 hour(s)
- Light source equivalent to traditional bulb of: 30 W
- Total lumen output fixture: 320 lm
- Bulb technology: LED, Safety Extra Low Voltage
- Light color: warm white
- Mains power: Range 220 V – 240 V, 50–60 Hz
- Fixture dimmable: No
- LED: Yes
- Number of bulbs: 1
- Wattage bulb included: 3 W
- IP code: IP44, protection against objects bigger than 1 mm, protection from splashed water
- Class of protection: I – earthed

Packaging dimensions & weight

- SAP EAN/UPC – Piece: 8718291479413
- EAN/UPC – Case: 8718291521549
- Height: 20.8 cm
- SAP Gross Weight EAN (Piece): 0.765 kg
- Weight: 0.765 kg
- Net Weight (Piece): 0.660 kg
- SAP Height (Piece): 208.000 mm
- SAP Length (Piece): 73.000 mm
- SAP Width (Piece): 173.000 mm
- Width: 7.3 cm
- Length: 17.3 cm



Issue date: 2019-05-28
Version: 0.375

© 2019 Signify Holding. All rights reserved. Signify does not give any representation or warranty as to the accuracy or completeness of the information included herein and shall not be liable for any action in reliance thereon. The information presented in this document is not intended as any commercial offer and does not form part of any quotation or contract, unless otherwise agreed by Signify. Philips and the Philips Shield Emblem are registered trademarks of Koninklijke Philips N.V.

www.lighting.philips.com