

PHILIPS Day-Brite CFI

Special Application

8700 series wraparound

Vandal resistant
T5, T5HO, or T8



Project: _____
Location: _____
Cat.No: _____
Type: _____
Lamps: _____ Qty: _____
Notes: _____

The Philips Day-Brite / Philips CFI 8700 series wraparound is a specification grade wet or damp location luminaire for medium or minimum security applications such as corridors, locker rooms, school restrooms, and tunnels.

Ordering guide

Example: 8705-232-UNV-F-F1-1/2-EB

Family	No. of Lamps	Lamp Type ¹	Voltage	Lens Type	Fasteners	No. of Ballasts	Ballast Type	Options
<input type="text"/> -	<input type="text"/>	<input type="text"/> -	<input type="text"/> -	<input type="text"/> -	<input type="text"/> -	<input type="text"/> -	<input type="text"/> -	<input type="text"/>
8705 5" Wide Unit 8709 9" Wide Unit 8713 13" Wide Unit	1 One Lamp (8705 Only) 2 Two Lamps ² 3 Three Lamps (8713 Only) ³ 4 Four Lamps (8713 Only)	14 14WT5 (24") 17 17WT8 (24") 24HO 24WT5HO (24") 32 32WT8 (48") 28 28WT5 (48") 54HO 54WT5HO (48")	UNV Universal voltage, 120-277V 120 120V 277 277V 347 347V	F .187 Prismatic Polycarbonate H .156 Prismatic Polycarbonate	F1 Allen Head Center Pin Reject F2 TORX Head Center Pin Reject SF Specified Fastener	1/1 1-Lamp Ballast 1/2 2-Lamp Ballast 1/3 3-Lamp Ballast 1/4 4-Lamp Ballast 2/2 Two 2-Lamp Ballasts 1/21 2-Lamp and 1-Lamp Ballast	EB Electronic ballast, <10% THD EB10R T8 electronic ballast, program rapid start, <10% THD SB Specified Ballast	E7 B60 emerg. ballast, T8, 600-700 lumens, 120/277V ⁴ E5 B50 emerg. ballast, U.S. or Canada market, T8, 1100-1400 lumens, UNV ESCAN B50-CAN emerg. ballast, Canada market, T8, 1100-1400 lumens, 120/347V ⁴ E7LP LP550 emerg. ballast T5/T5HO, 430-700 lumens, 120/277V ⁴ E6LP LP600 emerg. ballast U.S. or Canada market, T5/T5HO, 750-1325 lumens, 120/277V ⁴ GLR Fusing, fast blow NLF7 7W HPF PL Night Light (8709 or 8713, 4 ft. only) ⁴ SS Stainless steel housing, brushed finish

Footnotes

- ¹ Lamps supplied by others.
² Two Lamp 8705 only available in T5 or T8.
³ Three Lamp 8713 utilizes a deeper 4-1/2" housing. See dimensional section.
⁴ Specify voltage.

General Notes

- Consult factory for additional configurations.
- Many luminaire components, such as reflectors, refractors, lenses, sockets, lampholders, and LEDs are made from various types of plastics which can be adversely affected by airborne contaminants. If sulfur based chemicals, petroleum based products, cleaning solutions, or other contaminants are expected in the intended area of use, consult factory for compatibility.



8705/8709/8713 8700 series wraparound

Vandal resistant, T5, T5HO, or T8

Construction/Finish

- One-piece 16 gauge cold rolled steel housing, die formed, spot welded reinforced construction. Welded at stress points.
- Three widths available, 5", 9" and 13" in 2ft. or 4ft. lengths.
- Standard baked white polyester powder coated paint finish. Multi-stage pretreatment process. Salt spray 1,000 hours.

Lens

- Formed clear prismatic polycarbonate lens, pattern #12, .187" standard. Optional .156" lens available.
- Lens secured to housing with stainless steel Allen head center pin reject fasteners. Optional fasteners available.
- Gasketing on lens and housing ends to seal against moisture, insects and dirt.

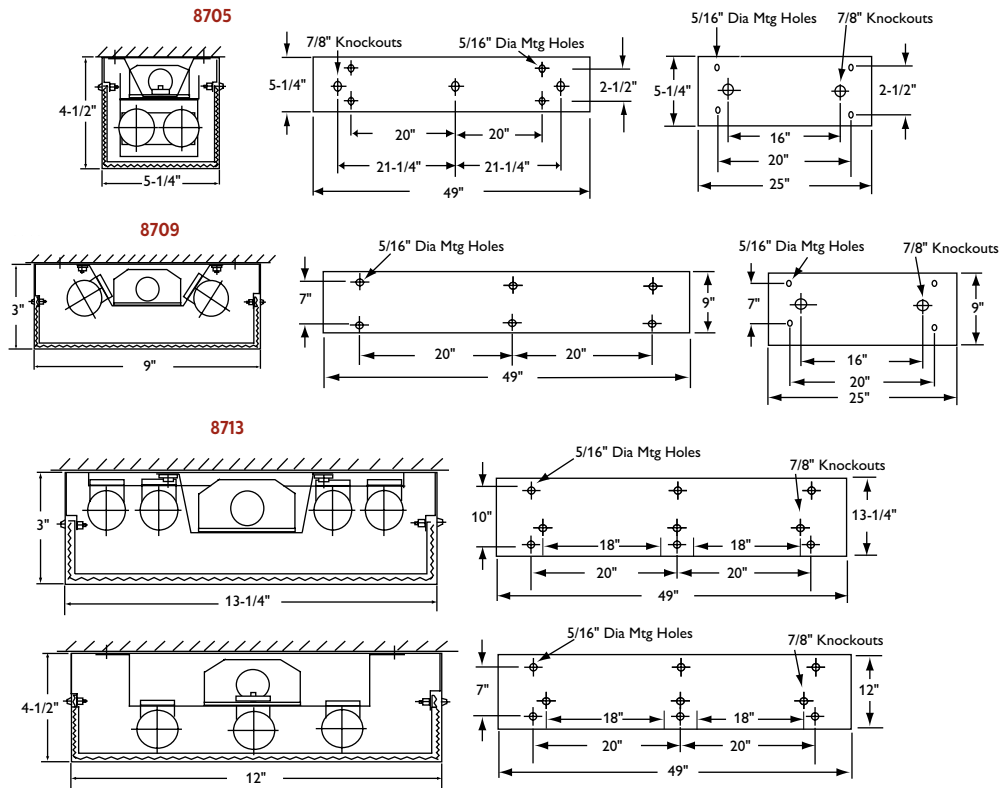
Electrical

- ETL (US/Canada) Wet location listing.
- Standard Class P sound rated A electronic ballast.
- Optional self-contained emergency ballasts can be incorporated.

Installation

- Surface mount via 5/16" diameter mounting holes. The 8700 Series cannot be pendant mounted.

Dimensions



Some luminaires use fluorescent or high intensity discharge (HID) lamps that contain small amounts of mercury. Such lamps are labeled, "Contain Mercury" and/or the symbol "HG". Lamps that contain mercury must be disposed of in accordance with local requirements. Information regarding lamp recycling and disposal can be found at www.lamprecycle.org

© 2015 Koninklijke Philips N.V. All rights reserved.
Philips reserves the right to make changes in specifications and/or to discontinue any product at any time without notice or obligation and will not be liable for any consequences resulting from the use of this publication.
philips.com/luminaires



Philips Lighting North America Corporation
200 Franklin Square Drive, Somerset, NJ 08873
Tel. 855-486-2216

Philips Lighting Canada Ltd.
281 Hillmount Rd, Markham, ON, Canada L6C 2S3
Tel. 800-668-9008