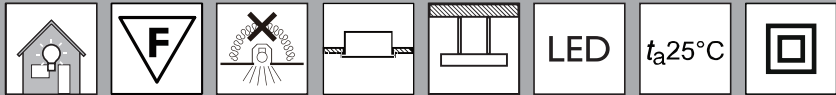



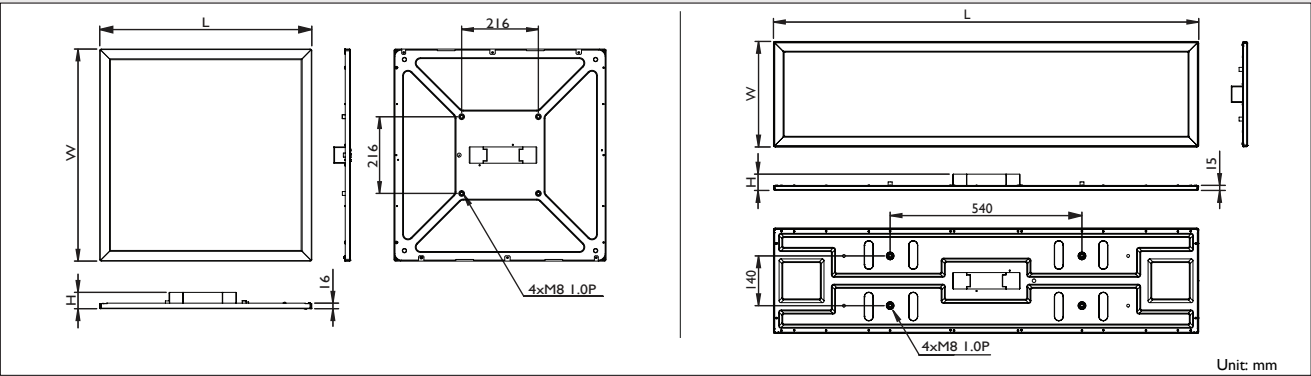
RC160V

Mounting instruction

RC160V-M002



Type	Voltage	Frequency	flux (lm)	Dimension L×W×H (mm)	Fixed/Dali		Class
RCI60V LED34S/840 PSU W60L60	220-240V~	50/60Hz	3400	597×597×46	Fixed	4	II
RCI60V LED34S/865 PSU W60L60							
RCI60V LED25S/840 PSU W60L60							
RCI60V LED25S/865 PSU W60L60	220-240V~	50/60Hz	2500	597×597×46	Fixed	4	II
RCI60V LED34S/840 PSU W30L120							
RCI60V LED34S/865 PSU W30L120							
RCI60V LED25S/840 PSU W30L120	220-240V~	50/60Hz	2500	1197×297×46	Fixed	4.2	II
RCI60V LED25S/865 PSU W30L120							
RCI60V LED34S/840 PSD W60L60							
RCI60V LED34S/865 PSD W60L60	220-240V~	50/60Hz	3400	597×597×46	Dali	4	II
RCI60V LED34S/840 PSD W30L120							
RCI60V LED34S/865 PSD W30L120							
RCI60Z SMS PSU GM	Please separately order Philips suspension kits. RCI60Z SMS PSU GM (fixed), RCI60Z SMS PSD (Dali).						
RCI60Z SMS PSD							



1. Please do not remove the protect film before installing to avoid scraping or dirtying the optical part.

2. The luminaire shall be installed by a qualified electrician and wired in accordance with the latest IEE electrical regulations or the national requirements.

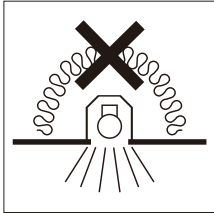
3. The luminaire is suitable for direct mounting on normally flammable surfaces.

4. The luminaire shall, under no circumstance, be covered with thermal insulation matting or similar material.

5. When cleaning the product, please use dry soft cottoncloth only.

6. Indoor use only.

7. Please do not put any pressure on the back and the driver.



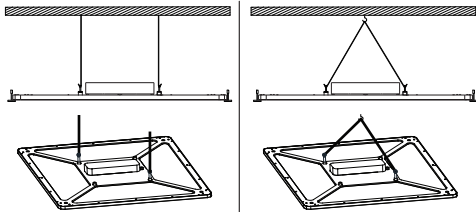
Fixed:

MCB (MAX)	No. of Driver	Inrush current peak	Inrush current T-width
I6A-B	40	6A	55μs

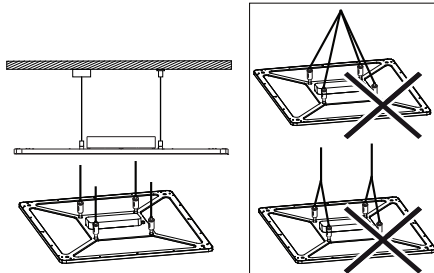
Dali:

MCB (MAX)	No. of Driver	Inrush current peak	Inrush current T-width
I6A-B	24	5.3A	700μs

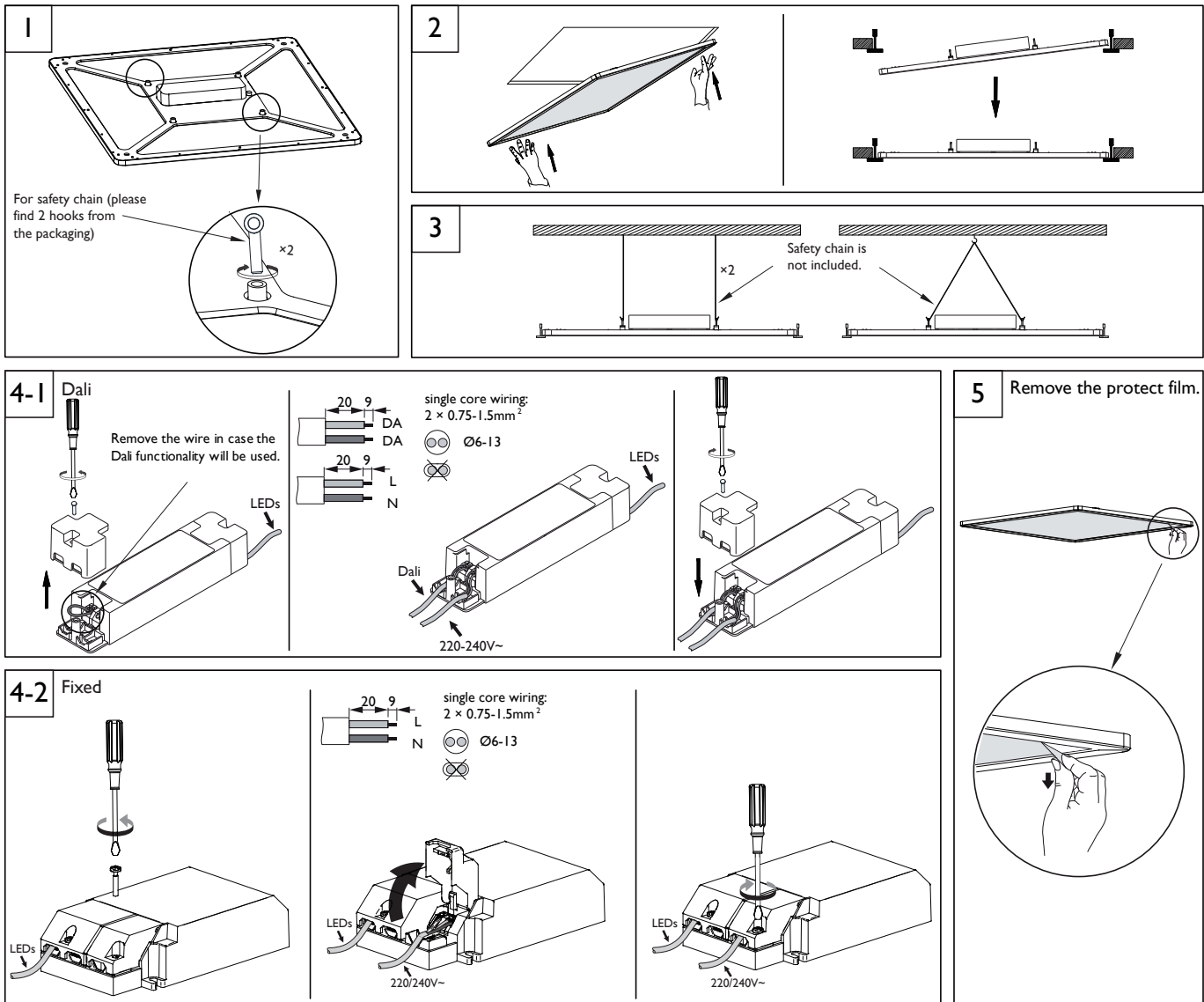
A Recessed Mounting



B Suspension Mounting



Recessed Mounting



Suspension Mounting -RCI60Z SMS PSU GM, RCI60Z SMS PSD

