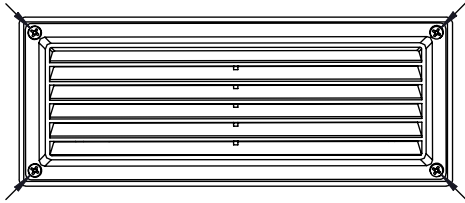


INSTALLATION INSTRUCTIONS: LED STEPLYTE

Figure 1. Loosen 4 screws to remove faceplate.



1/2-14 NPT Side
Conduit Entries
(2 places)

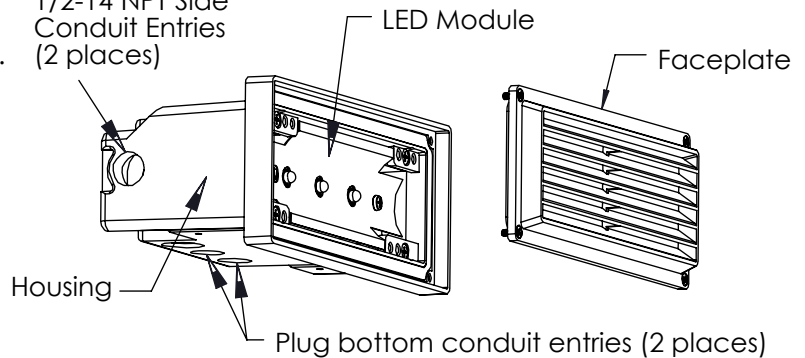
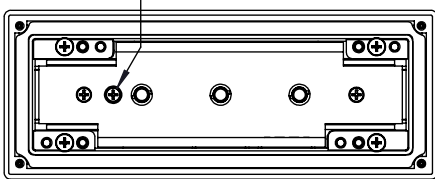
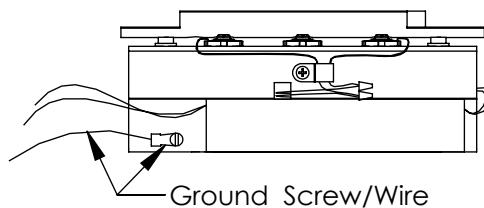


Figure 2. Remove indicated screw.



(3 watt LED version shown, 5 watt LED also available)

Figure 3. Connect supply wires to LED driver.



(+) WHITE
(-) BLACK



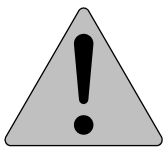
This fixture is intended for installation in accordance with the National Electrical Code and local code specifications. Failure to adhere to these codes and instructions may result in serious injury and/or damage to the ballast and void the warranty. These instructions do not purport to cover all details or variations in equipment, nor to provide for every possible contingency related to installation, operation, maintenance, or mounting situation. Should specific problems occur that are not addressed by these instructions, contact your Sales Representative or distributor for assistance. Retain these instructions for future reference.



SAFETY WARNING:

ALWAYS TURN FIXTURE OFF/DISCONNECT POWER AND ALLOW TO COOL BEFORE PERFORMING ANY MAINTENANCE, INCLUDING RELAMPING AND CLEANING!

This fixture can become very HOT! The fixture housing and lens, especially if it is glass, can become hot enough to blister hands. Attention should be paid to where the fixture is mounted, particularly if it can be touched by children or pets. To help prevent premature failure, decreased performance, overheating and risk of fire, keep fixture and lens clean and free of leaves, mulch, debris and mineral deposits from water. The fixture and lens can be cleaned using a soft cloth and a solution of mild liquid soap and warm water. Wipe clean and dry with a soft, lint-free dry cloth. Avoid polishing fixture or lens.



INSTRUCTIONS PERTAINING TO A RISK OF FIRE OR INJURY TO PERSONS IMPORTANT SAFETY INSTRUCTIONS - SAVE THESE INSTRUCTIONS!

WARNING - Lamp gets HOT quickly! To reduce the risk of FIRE OR INJURY TO PERSONS:

Do not operate fixture with a missing or damaged lens/lens assembly.

Contact only switch or plug when turning fixture on or off. Do NOT touch hot lens or housing.

Turn off or unplug fixture and allow to cool before relamping. Keep lamp away from combustibles.

Do NOT touch lamp with bare hands at any time, use a soft cloth as oil from skin may damage lamp.

FOR USE ONLY WITH LINE VOLTAGE LANDSCAPE LIGHTING POWER UNITS THAT ARE RATED
MAXIMUM 120 VOLTS PER CIRCUIT.

Do not install fixture within 10 feet (3.05 meters) of a pool, spa or fountain.

INSTALLATION INSTRUCTIONS

1. Make sure power is turned OFF before installing or servicing this fixture.
2. This fixture must be mounted according to the installation instruction sheet, 32000853. Mounting templates and instructions on how to use the mounting accessories are provided with those instructions.
3. To access the wiring compartment and finish the installation, the fixture must be partially disassembled.
 - Loosen the four screws on the faceplate, as shown in Figure 1, to remove the faceplate.
 - Remove the screw indicated in Figure 2 to remove LED/driver assembly.
4. Connect conduit to housing. NOTE: Only use side conduit entries and plug both bottom conduit entries (and unused side conduit entry, if applicable) as shown in Figure 1.
5. Pull wires from conduit into the housing and connect to LED driver module. Reference Figure 3 for wiring.
 - Connect white (positive) supply wire to white wire on LED driver using wire nut.
 - Connect black (negative) supply wire to black wire on LED driver using wire nut.
 - Connect green (ground) supply wire to copper ground wire inside housing and green ground wire attached to the heatsink using wire nut.
6. Reassemble the fixture.
 - Install LED/driver assembly in housing and secure in place with supplied #8-32 screw.
 - Position faceplate on front of fixture and tighten the four screws to seal fixture.
7. Turn power ON.