

INSTALLATION INSTRUCTIONS

DESIGNER FLOOD LUMINAIRE DF5/7

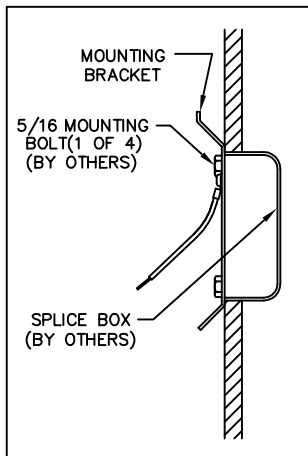


IMPORTANT: READ ALL INSTRUCTIONS BEFORE PERFORMING ANY WORK.
BE SURE ALL POWER IS OFF PRIOR TO INSTALLING LUMINAIRES.

WARNING: FIXTURE MUST BE GROUNDED IN ACCORDANCE WITH
APPROPRIATE CODES. FAILURE TO DO SO MAY RESULT
IN SERIOUS INJURY.

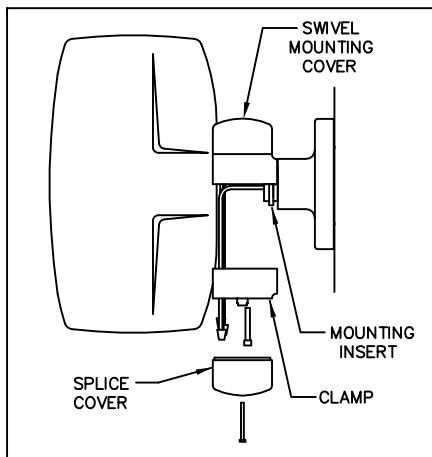
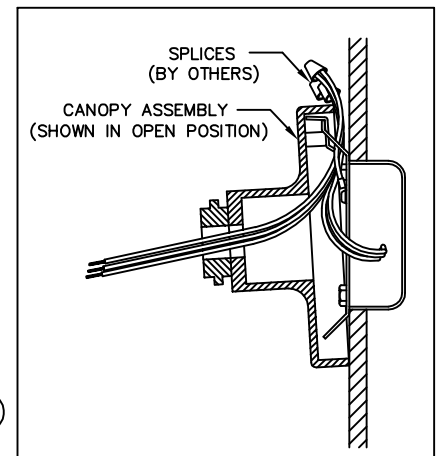
FIXTURE IS APPROVED FOR ABOVE GRADE INSTALLATIONS ONLY

WALL MOUNT ("W" CANOPY)



NOTE: MOUNTING BRACKET IS SECURED TO WALL WITH 5/16 BOLTS (DF7) OR 1/4 BOLTS (DF5) (BY OTHERS). STRUCTURAL MEMBERS MUST BE PRESENT IN WALL TO ACCEPT BOLTS.

1. APPLY A BEAD OF SEALANT ON WALL AROUND SPLICE BOX OPENING.
2. PLACE MOUNTING BRACKET OVER SPLICE BOX AND SECURE TO WALL WITH PROPER BOLTS (BY OTHERS).
3. HANG CANOPY ASSEMBLY ON MOUNTING BRACKET IN THE OPEN POSITION (SHOWN) AND ROUTE CANOPY AND SUPPLY WIRES TO THE SIDE OF THE CANOPY.



4. MAKE CANOPY ELECTRICAL CONNECTIONS. CANOPY LINE TO SUPPLY LINE, COMMON TO COMMON AND GROUND TO GROUND. INCLUDE IN THE GROUND CONNECTION THE MOUNTING BRACKET GROUND PIGTAIL. WIRING TO ADDITIONAL FIXTURES ON THE SAME CIRCUIT MAY BE INCLUDED IN THESE SPLICES.
5. LIFT CANOPY ASSEMBLY FROM MOUNTING BRACKET AND RELOCATE SPLICES INTO SPLICE BOX. RE-HANG CANOPY ASSEMBLY IN THE CLOSED POSITION BEING CAREFUL NOT TO PINCH WIRES. SECURE CANOPY ASSEMBLY BY TIGHTENING THE TWO CANOPY SET SCREWS.
6. REMOVE SPLICE COVER AND CLAMP FROM SWIVEL ASSEMBLY. PLACE FIXED CLAMP ON CANOPY SO THAT IT ENGAGES THE MOUNTING INSERT FLANGE. ROUTE FIXTURE AND CANOPY WIRES THROUGH CLAMP. SECURE CLAMP TO SWIVEL ASSEMBLY

WITH 1/4-20 BOLTS PREVIOUSLY REMOVED, BUT DO NOT FULLY TIGHTEN. ROTATE FIXTURE SO THAT LENS FACES DOWNWARD.

7. MAKE ELECTRICAL CONNECTIONS BETWEEN FIXTURE AND CANOPY. CANOPY LINE TO FIXTURE LINE, COMMON TO COMMON AND GROUND TO GROUND.

8. UNSCREW THE TWO BOLTS IN THE UPPER CORNERS OF THE LENS FRAME. OPEN FRAME, INSTALL LAMP, CLOSE AND SECURE FRAME BEING CAREFUL NOT TO OVER TIGHTEN THE BOLTS.

INSTALLATION INSTRUCTIONS

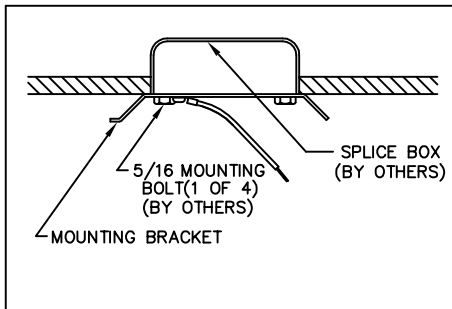
DESIGNER FLOOD LUMINAIRE DF5/7

PHILIPS



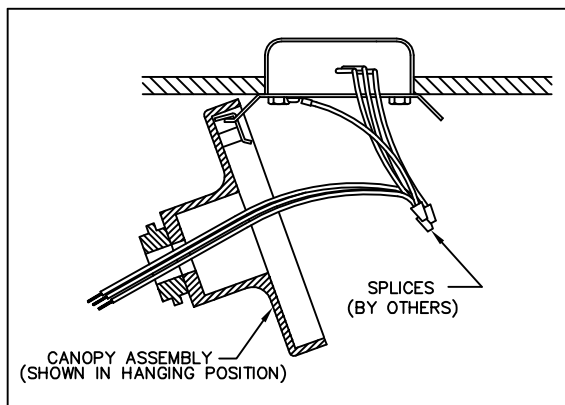
9. AIM THE FIXTURE BY LOOSENING THE BOLT IN THE CENTER OF THE SWIVEL MOUNTING COVER. EACH MARK ON THE MOUNTING COVER INDICATES 15°. THE INTERNAL TEETH LOCK EVERY 5°. TIGHTEN SWIVEL AND CLAMP BOLTS WHEN AIMING IS COMPLETE.
10. SECURE SPLICE COVER TO CLAMP WITH SCREW PREVIOUSLY REMOVED.

CEILING MOUNT ("W" CANOPY)



NOTE: MOUNTING BRACKET IS SECURED TO CEILING WITH 5/16 BOLTS (DF7) OR 1/4 BOLTS (DF5) (BY OTHERS). STRUCTURAL MEMBERS MUST BE PRESENT IN CEILING TO ACCEPT BOLTS.

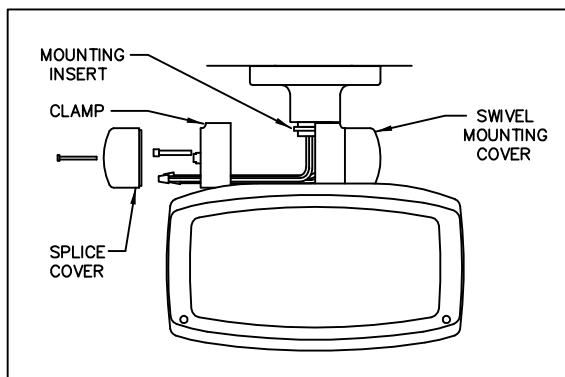
1. PLACE MOUNTING BRACKET OVER SPLICE BOX AND SECURE TO CEILING WITH PROPER BOLTS (BY OTHERS).
2. HANG CANOPY ASSEMBLY ON MOUNTING BRACKET AS SHOWN.



3. MAKE CANOPY ELECTRICAL CONNECTIONS. CANOPY LINE TO SUPPLY LINE, COMMON TO COMMON AND GROUND TO GROUND. INCLUDE IN THE GROUND CONNECTION THE MOUNTING BRACKET GROUND PIGTAIL.

WIRING TO ADDITIONAL FIXTURES ON THE SAME CIRCUIT MAY BE INCLUDED IN THESE SPLICES.

4. RELOCATE SPLICES INTO SPLICE BOX. DISENGAGE CANOPY ASSEMBLY FROM MOUNTING BRACKET. RE-ENGAGE IN THE CLOSED POSITION BEING CAREFUL NOT TO PINCH WIRES. SECURE CANOPY ASSEMBLY BY TIGHTENING THE TWO CANOPY SET SCREWS.



5. REMOVE SPLICE COVER AND CLAMP FROM SWIVEL ASSEMBLY. PLACE FIXED CLAMP ON CANOPY SO THAT IT ENGAGES THE MOUNTING INSERT FLANGE. ROUTE FIXTURE AND CANOPY WIRES THROUGH CLAMP. SECURE CLAMP TO SWIVEL ASSEMBLY WITH 1/4-20 BOLTS PREVIOUSLY REMOVED, BUT DO NOT FULLY TIGHTEN.

6. MAKE ELECTRICAL CONNECTIONS BETWEEN FIXTURE AND CANOPY. CANOPY LINE TO FIXTURE LINE, COMMON TO COMMON AND GROUND TO GROUND.

7. UNSCREW THE TWO BOLTS IN THE LOWER CORNERS OF THE LENS FRAME. OPEN FRAME, INSTALL LAMP, CLOSE AND SECURE FRAME BEING CAREFUL NOT TO OVER TIGHTEN THE BOLTS.

8. AIM THE FIXTURE BY LOOSENING THE BOLT IN THE CENTER OF THE SWIVEL MOUNTING COVER. EACH MARK ON THE MOUNTING COVER INDICATES 15°. THE INTERNAL TEETH LOCK EVERY 5°. TIGHTEN SWIVEL AND CLAMP BOLTS WHEN AIMING IS COMPLETE.
9. SECURE SPLICE COVER TO CLAMP WITH SCREW PREVIOUSLY REMOVED.

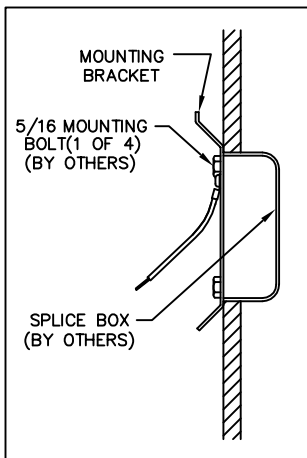
INSTALLATION INSTRUCTIONS

DESIGNER FLOOD LUMINAIRE DF5/7

PHILIPS

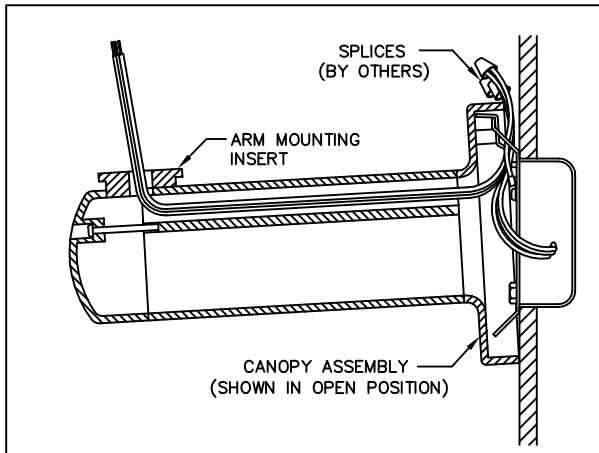
GARDCO

WALL MOUNT ("W90" CANOPY)



NOTE: MOUNTING BRACKET IS SECURED TO WALL WITH 5/16 BOLTS (DF7) OR 1/4 BOLTS (DF5) (BY OTHERS). STRUCTURAL MEMBERS MUST BE PRESENT IN WALL TO ACCEPT BOLTS.

1. APPLY A BEAD OF SEALANT ON WALL AROUND SPLICE BOX OPENING.
2. PLACE MOUNTING BRACKET OVER SPLICE BOX AND SECURE TO WALL WITH PROPER BOLTS (BY OTHERS).
3. HANG CANOPY ASSEMBLY ON MOUNTING BRACKET IN THE OPEN POSITION (SHOWN) AND ROUTE CANOPY AND SUPPLY WIRES TO THE SIDE OF THE CANOPY.
4. MAKE CANOPY ELECTRICAL CONNECTIONS. CANOPY LINE TO SUPPLY LINE, COMMON TO COMMON AND GROUND TO GROUND. INCLUDE IN THE GROUND CONNECTION THE MOUNTING BRACKET GROUND PIGTAIL. WIRING TO ADDITIONAL FIXTURES ON THE SAME CIRCUIT MAY BE INCLUDED IN THESE SPLICES.

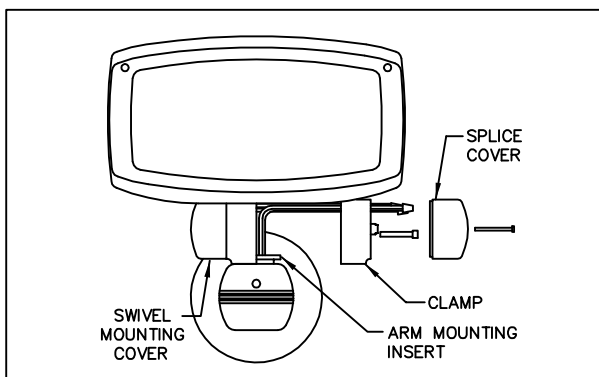


5. LIFT CANOPY ASSEMBLY FROM MOUNTING BRACKET AND RELOCATE SPLICES INTO SPLICE BOX. RE-HANG CANOPY ASSEMBLY IN THE CLOSED POSITION BEING CAREFUL NOT TO PINCH WIRES. SECURE CANOPY ASSEMBLY BY TIGHTENING THE TWO CANOPY SET SCREWS.

6. REMOVE SPLICE COVER AND CLAMP FROM SWIVEL ASSEMBLY. PLACE FIXED CLAMP ON TOP OF ARM SO THAT IT ENGAGES THE ARM MOUNTING INSERT FLANGE. ROUTE FIXTURE AND CANOPY WIRES THROUGH CLAMP. SECURE CLAMP TO SWIVEL ASSEMBLY WITH 1/4-20 BOLTS PREVIOUSLY REMOVED, BUT DO NOT FULLY TIGHTEN.

7. MAKE ELECTRICAL CONNECTIONS BETWEEN FIXTURE AND CANOPY. CANOPY LINE TO FIXTURE LINE, COMMON TO COMMON AND GROUND TO GROUND.

8. UNSCREW THE TWO BOLTS IN THE UPPER CORNERS OF THE LENS FRAME. OPEN FRAME, INSTALL LAMP, CLOSE AND SECURE FRAME BEING CAREFUL NOT TO OVER TIGHTEN THE BOLTS.



9. AIM THE FIXTURE BY LOOSENING THE BOLT IN THE CENTER OF THE SWIVEL MOUNTING COVER. EACH MARK ON THE MOUNTING COVER INDICATES 15°. THE INTERNAL TEETH LOCK EVERY 5°. TIGHTEN SWIVEL AND CLAMP BOLTS WHEN AIMING IS COMPLETE.
10. SECURE SPLICE COVER TO CLAMP WITH SCREW PREVIOUSLY REMOVED.

INSTALLATION INSTRUCTIONS

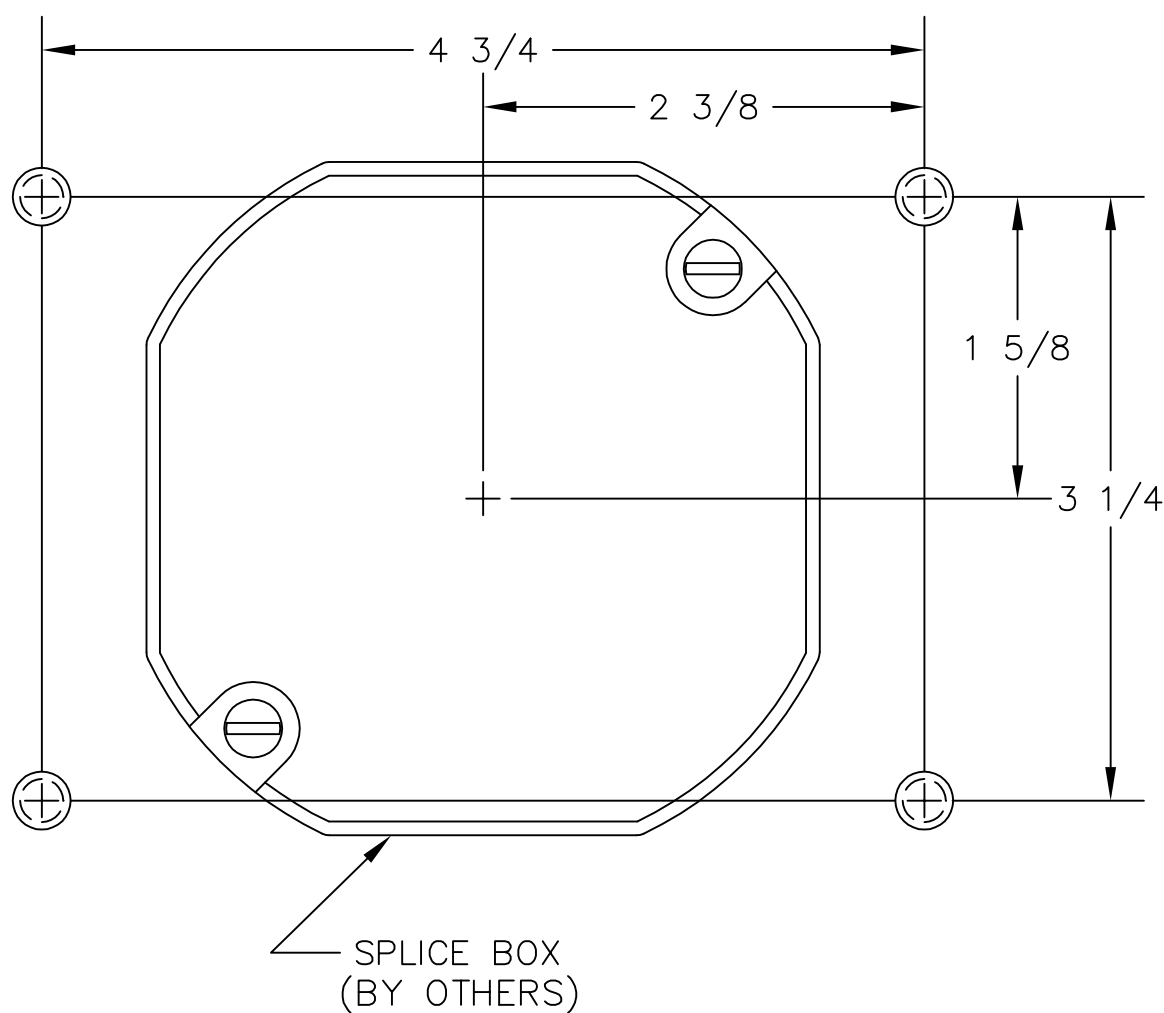
DESIGNER FLOOD LUMINAIRE DF7

PHILIPS



BOLT PATTERN FOR DF7 MOUNTING BRACKET.
(5/16" STUDS MAY BE USED, BUT MUST NOT EXTEND MORE
THAN 5/8" BEYOND WALL OR CEILING SURFACE.)

DF7



NOT TO SCALE

PHILIPS

INSTALLATION INSTRUCTIONS

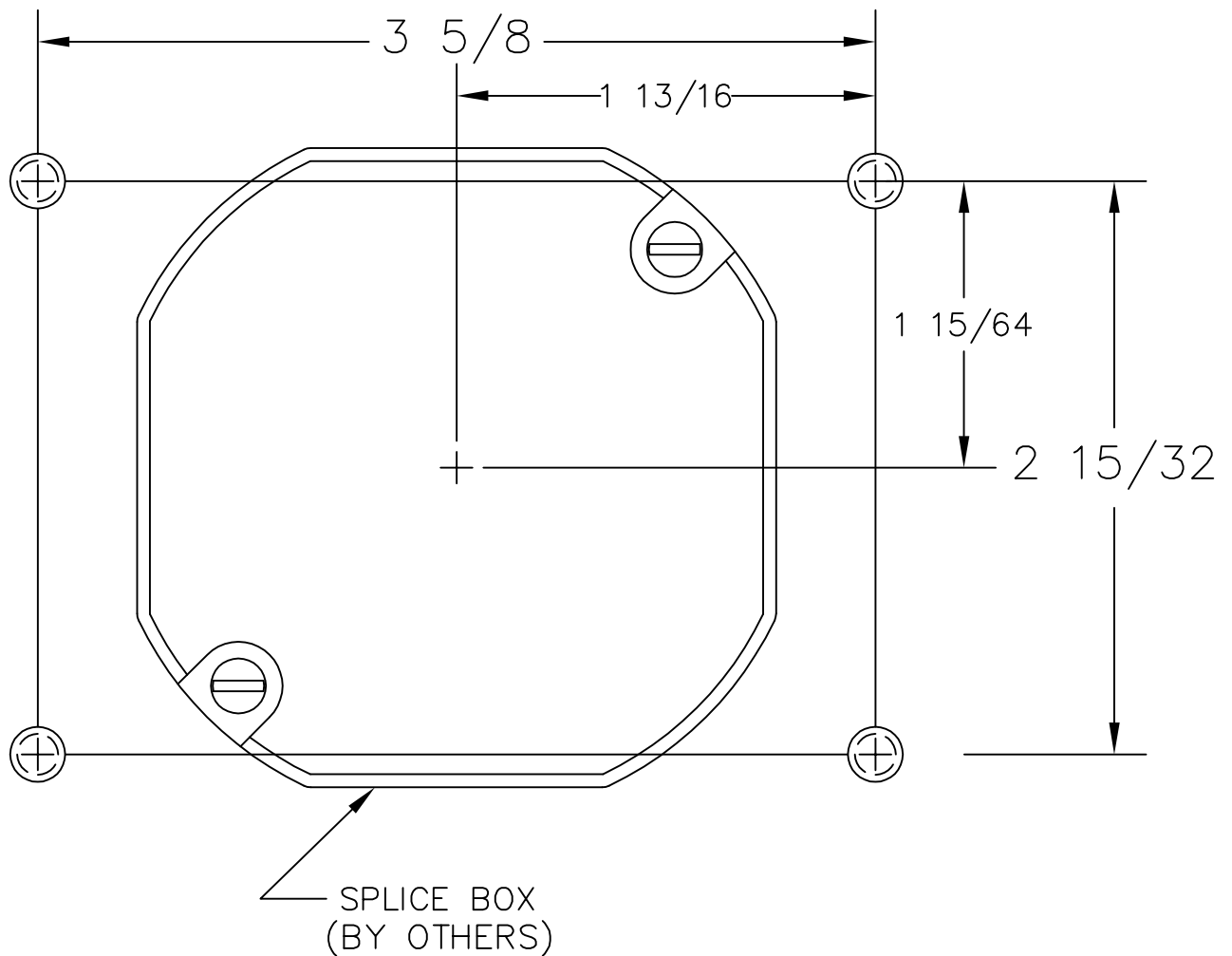
DESIGNER FLOOD LUMINAIRE DF5

PHILIPS



BOLT PATTERN FOR DF5 MOUNTING BRACKET.
(1/4" STUDS MAY BE USED, BUT MUST NOT EXTEND MORE
THAN 5/8" BEYOND WALL OR CEILING SURFACE.)

DF5



NOT TO SCALE



© 2016 Philips Lighting Holding B.V. All Rights Reserved.
www.philips.com/luminaires

443561005240/A815408 Rev. C

Page 5 of 5

Philips Lighting North America
Corporation
200 Franklin Square Drive,
Somerset NJ 08873, USA

Philips Lighting Canada Ltd.
281 Hillmount Road,
Markham ON, Canada L6C 2S3