

# Kleenseal HL

## Hazardous Location Luminaire



Kleenseal HL is a cleanroom luminaire with hazardous location listing suited for electronic, biological, pharmaceutical, cleanrooms and most hazardous locations.

### Features

- Totally sealed recessed fluorescent with flush door frame.
- Housing is 20ga CRS (stainless steel optional) with silicone sealed joints.
- Fits 1" or 1-1/2" grid ceiling
- Flange mounting available. Adjustable swing arm brackets standard on flange units.
- Optional plaster frames available for flange units.
- Doors frame is extruded aluminum with silicone sealed miter joints. Optional stainless steel overlap door.
- .125" prismatic acrylic lens is silicone sealed to door frame. Optional lens materials available.
- Door frame is chain hung for safe maintenance.
- Class I, Division 2, Groups A, B, C, D, T4A, Class II, Division 2, Groups F, G, T4 (40° ambient), Class III.
- Certified to meet UL 1598 standards for wet location.

### Product Availability

Luminaire Length	Lamp Type	No. of Lamps
1x4	F32	2, 3
2x4	F32	2, 3, 4
2x2	F32-U	2, 3
2x2	F17	2, 3, 4

### Dimensions

Ceiling Opening Flange Type	
1x4	13-1/4" x 49-1/4"
2x2	25-1/4" x 25-1/4"
2x4	25-1/4" x 49-1/4"

**Note:** For technical information or codes and classifications, see PDFs Tech1-Tech5 online.

### Flange Type Accessories

Plaster Frame Side Rails (per pair w/spacers for width shown)

#### Individual Mount

**M5175** – 4' Plaster Frame Rails for 1'x4'

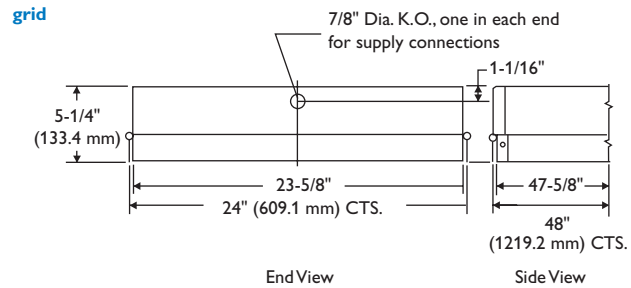
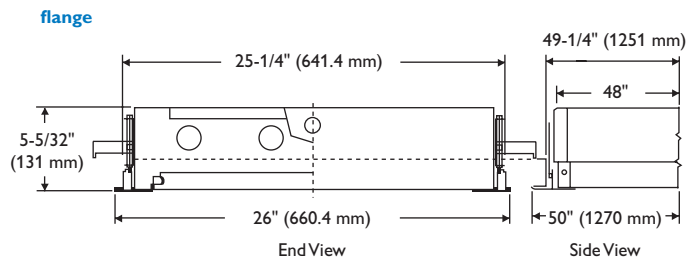
**M5176** – 2' Plaster Frame Rails for 2'x2'

**M5177** – 4' Plaster Frame Rails for 2'x4'

#### Plaster Frame End Pieces (Each)

**M5180** – 1' Wide Troffer

**M5181** – 1' Wide Troffer



### Green Product Choice: HL2443G1TAK1

HL						/			
Series	Number of Lamps	Mounting	Lens Type	Options	Size	Lamp Type	Door Frame	Voltage	
HL – Kleenseal HL	1 – 1 lamp 2 – 2 lamp 3 – 3 lamp 4 – 4 lamp	G – Grid F – Flange	TAK – .125 Acrylic Prismatic POK – Polycarbonate Prismatic C73 – Tempered Glass Prismatic XTK – .187 Acrylic Prismatic VPL – Sealed Louver	FF – Fast Acting Fixture Fuse, Buss GLR SFF – Slow Blow (Fusetron) Fuse, Buss GMF 0Deg – 0 Deg. on 430MA Ballast EB – For Electronic Ballast 2EB – 2 Electronic Ballasts TP – Tamper Proof Screws DN – Lens furnished Prisms Down IEF – Emergency Fluorescent Sockets SSH – Stainless Steel Housing	14 – 1x4 22 – 2x2 24 – 2x4	1 – T8 17W 3 – T8 32W	1 – Aluminum Flush 5 – Stainless Steel Overlap	1 – 120V 2 – 277V 3 – 347V	