

# PHILIPS

## Wall light

myLiving

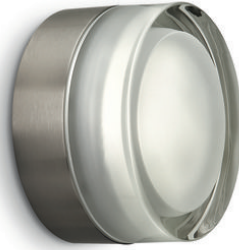
31126

matt chrome

LED



31126/17/66



## Light and relaxed

This round Philips myLiving LED wall and ceiling light is a classy option that fits your versatile application needs. Its premium opal glass helps reduce glare while its warm diffused light provides a gentle glow for your home.

### Long lifespan

- Extremely long life 20,000 hours

### Pure, natural light

- Warm white light effect

### Premium quality

- Premium opal glass for reduced glare

# Highlights

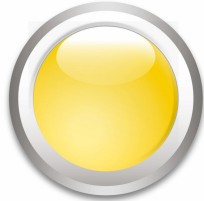
## Extremely long life



A light source you can trust. Philips LED lights offer an extremely long-life of at least 20,000 hours (which equals 20 years on basis of an average use of 3 hours / day with an amount of at least of 13,000 on/off switching cycles). It feels so comfortable to think that you won't have to worry about maintenance or lamp replacement

while having the perfect light ambiance in your home.

## Warm white light effect



Light up your home with warm white light effects thanks to the latest LED innovation. Philips introduces the latest generation of warm white light high power LEDs, reaching a colour temperature of 2700 Kelvin. This innovation brings the Philips lighting fixtures to the next level, allowing you to combine elegance and ambience creation with light and energy efficiency.

## Premium materials



Premium treated glass for uniform light effect

# Specifications

## Design and finishing

- Color: matt chrome
- Material: metal

## Miscellaneous

- Especially designed for: Living- & Bedroom
- Style: Contemporary
- Type: Wall light
- EyeComfort: No

## Product dimensions & weight

- Height: 6.0 cm
- Length: 11 cm
- Net weight: 0.772 kg
- Width: 11 cm

## Service

- Warranty: 1 year(s)

## Technical specifications

- Mains power: Range 220 V - 240 V
- Fixture dimmable: No
- LED: Yes
- Built in LED: Yes
- Energy class included light source: Built in LED
- IP code: IP20, protection against objects bigger than 12.5 mm, no protection against water
- Class of protection: I - earthed

## Packaging dimensions and weight

- EAN/UPC - product: 6947830424511
- Net weight: 0.772 kg
- Gross weight: 0.945 kg
- Height: 158.000 mm
- Length: 105.000 mm
- Width: 153.000 mm
- Material number (12NC): 915004506301



Issue date: 2023-11-08  
Version: 0.513

© 2023 Signify Holding. All rights reserved. Signify does not give any representation or warranty as to the accuracy or completeness of the information included herein and shall not be liable for any action in reliance thereon. The information presented in this document is not intended as any commercial offer and does not form part of any quotation or contract, unless otherwise agreed by Signify. Philips and the Philips Shield Emblem are registered trademarks of Koninklijke Philips N.V.

[www.lighting.philips.com](http://www.lighting.philips.com)