

# PHILIPS

Wall light

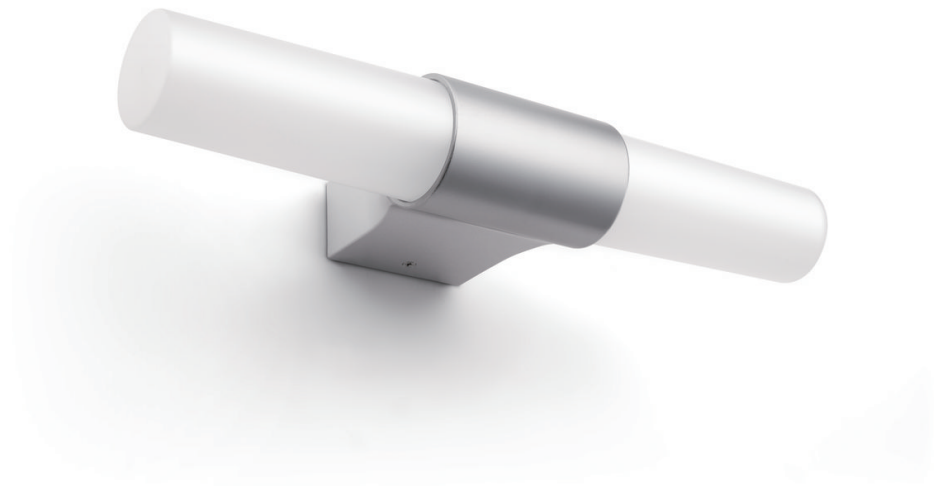
myBathroom

Jojoba

silver

LED

34034/14/86



## Light and relaxed

Cleaner lines, brighter shine. Let the Philips myLiving Jojoba wall light illuminate your spaces with its simple and elegant design. Made with chrome and IP44 certified, this integrated LED light is perfect for your bathroom.

### **Ease of use**

- Moisture resistant

### **Energy saving**

- Built-in LED, as part of the system

# Highlights

## Moisture resistant Integrated LED light source



A light source you can trust. With integrated LED light source, you won't have to worry about maintenance or lamp replacement while having the perfect light ambiance in your home.

# Specifications

## Design and finishing

- Color: silver
- Material: synthetics

## Extra feature/accessory incl.

- Waterproof: Yes

## Miscellaneous

- Especially designed for: Bathroom
- Style: Contemporary
- Type: Wall light
- EyeComfort: Yes

## Power consumption

- Energy Efficiency Label (EEL): Built in LED

## Product dimensions & weight

- Height: 5.2 cm
- Length: 30 cm
- Net weight: 0.300 kg
- Width: 10.7 cm

## Service

- Warranty: 2 year(s)

## Technical specifications

- Lifetime up to: 15,000 hour(s)
- Total lumen output fixture: 450 lm
- Bulb technology: LED
- Light color: cool white
- Mains power: 50-60 Hz
- Fixture dimmable: No
- LED: Yes
- Built in LED: Yes
- Energy class included light source: Built in LED
- Number of bulbs: 1
- Wattage bulb included: 7.5 W
- Maximum wattage replacement bulb: 7.5 W
- IP code: IP44
- Class of protection: II - double insulated
- Light source replaceable: No

## Packaging dimensions and weight

- EAN/UPC - product: 6947830433803
- Net weight: 0.300 kg
- Gross weight: 0.460 kg
- Height: 308.000 mm
- Length: 63.000 mm
- Width: 123.000 mm
- Material number (12NC): 915005201901



Issue date: 2023-11-08  
Version: 0.451

© 2023 Signify Holding. All rights reserved. Signify does not give any representation or warranty as to the accuracy or completeness of the information included herein and shall not be liable for any action in reliance thereon. The information presented in this document is not intended as any commercial offer and does not form part of any quotation or contract, unless otherwise agreed by Signify. Philips and the Philips Shield Emblem are registered trademarks of Koninklijke Philips N.V.

[www.lighting.philips.com](http://www.lighting.philips.com)