

**Read and understand these instructions before installing luminaire.**

Page 1 of 3

This luminaire is intended for installation in accordance with the National Electrical Code and local regulations. To assure full compliance with local codes and regulations, check with your local electrical inspector before installation. To prevent electrical shock, turn off electricity at fuse box before proceeding.

Retain these instructions for maintenance reference.

**PowerTrip™ 120V END FEED CONNECTORS 20000 & 20000 FOR USE WITH 20000 SERIES 120V ProSpec™ TRACK ONLY.  
THE 37000 & 37000 277V CONNECTORS FOR USE WITH 37000 SERIES 277V ProSpec™ TRACK ONLY.  
PowerTrip™ Breaker will limit the wattage on a circuit and can be used as a standard ON/OFF switch.**

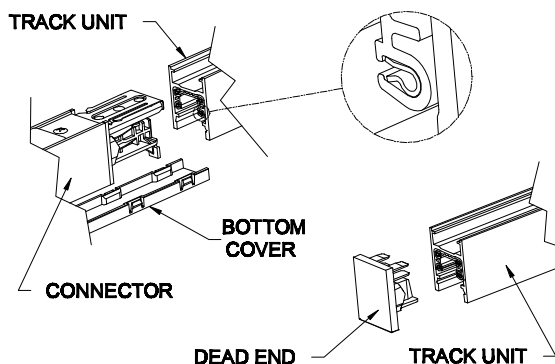
**Note:** POWERTRIP CONNECTOR CAN BE FED USING A 4 IN. OCTAGON JUNCTION BOX, FED DIRECTLY USING FLEXIBLE OR RIGID CONDUIT WITH 3/8 OR 1/2 ELECTRICAL CONNECTOR, OR TO A GRID CEILING USING A GRID CEILING MOUNTING KIT (SOLD SEPARATELY).

- \* CONNECTORS COMPATIBLE WITH P&P SERIES BREAKERS ONLY. (BREAKERS SOLD SEPARATELY)
- \* TURN OFF POWER AT BREAKER BOX BEFORE INSTALLING PowerTrip™ AND TRACK.
- \* IF FEEDING WITH ELECTRICAL CONNECTORS: DO NOT USE PowerTrip™ AS A CONDUIT SUPPORT. INDEPENDENT CONDUIT SUPPORTS MUST BE USED TO ATTACH THE CONDUIT TO THE BUILDING STRUCTURE.
- \* USE THE PROPER CURRENT RATED BREAKER TO LIMIT THE LOAD ON THE CIRCUIT. AT LEAST ONE BREAKER NEEDS TO BE USED WITH THE CONNECTOR.
- \* CONNECTOR ACCEPTS (2) BREAKERS.
- \* DO NOT POSITION LUMINAIRE SUCH THAT IT TOUCHES THE PowerTrip™ CONNECTOR.
- \* CONNECTOR CAN INSTALL INTO EITHER END OF THE TRACK.
- \* FOR GRID CEILING INSTALLATION USE ONLY THE 20000 OR 37000 SERIES, AND USE THE 20000 SERIES MOUNTING KIT (SOLD SEPARATELY) REFERENCING IS-26096 FOR INSTALLATION INSTRUCTIONS

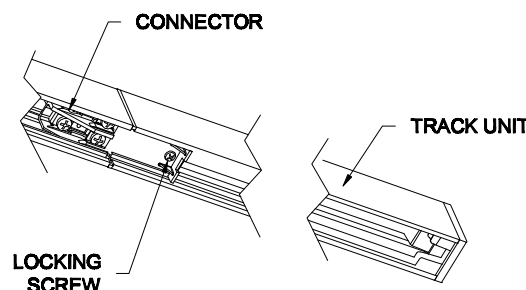
**A. INSTALLING POWERTRIP LIVE END CANOPY CONNECTOR ONTO A J-BOX.  
(APPLICABLE TO THE 20000 AND 37000)**

**Note:** PowerTrip Current Limiter conforms to section 130.d.3 of the California Energy Code.

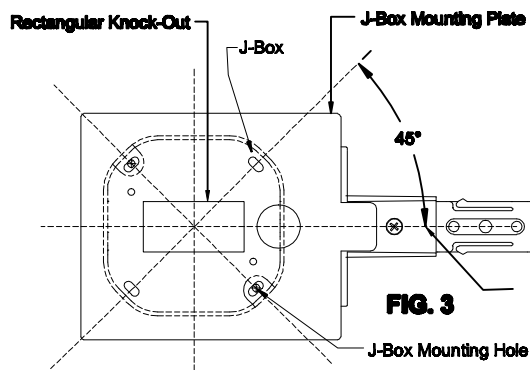
1. The centerline of the track must be on the center of the J-BOX and the mounting holes for the J-BOX must be at a 45° to the centerline of the track. SEE FIG. 3
2. Remove the RECTANGULAR KNOCK OUT from the J-BOX MOUNTING PLATE attached to the connector housing. Do not remove any other knock outs.
3. Remove the BOTTOM COVER from the CONNECTOR.
4. Remove the BREAKER knock out if using (2) breakers.
4. Attach the BREAKER(S) into COVER through the designated cut out. SEE FIG. 4 (NEXT PAGE)
5. Leave COVER separated until after housing is secured to J-BOX.
6. Fasten the J-BOX MOUNTING PLATE to the J-Box passing supply wires through RECTANGULAR KNOCK OUT. Secure PLATE by passing (2) flat head screws through PLATE and into J-BOX.
7. Fasten HOUSING to J-BOX MOUNTING PLATE using designated screws and screw holes. SEE FIG. 4 (NEXT PAGE)
8. Attach wires per WIRING INSTRUCTIONS BELOW.
9. Remove DEAD END COVER IF necessary by pulling it out of the track.
10. Slide TRACK onto POWERTRIP EXTENSION CONNECTOR and ensure that the (2) CONTACT BLADES are aligning with the copper wires in the track during assembly. SEE FIG. 1 & 2
11. Tighten LOCKING SCREW.
12. Fasten COVER without pinching any wires using provided TORX screws. SEE FIG. 4 (NEXT PAGE)
13. Snap the BOTTOM COVER onto the connector
14. See operating instructions below.



**FIG. 1**



**FIG. 2**



**FIG. 3**

Track Centerline

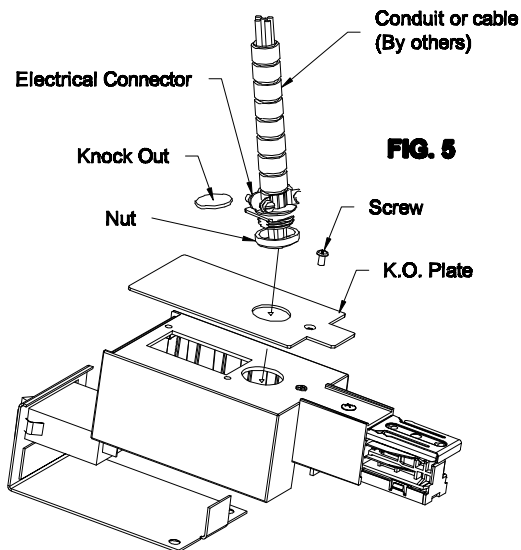
Lightolier is a Philips group brand

631 Airport Road, Fall River, MA 02720 • (508) 879-8131 • Fax (508) 674-4710  
We reserve the right to change details of design, materials and finish.  
www.lightolier.com © 2008 Philips Group • A0609

**PHILIPS**

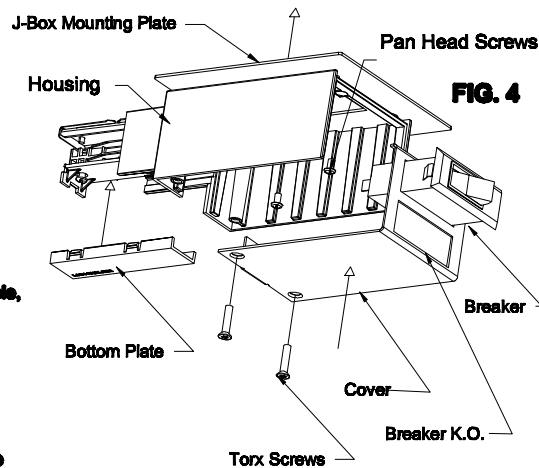
**B. INSTALLING POWERTRIP LIVE END FEED CONNECTOR USING FLEXIBLE OR RIGID CONDUIT.  
(APPLICABLE TO THE 26099 AND 37099)  
USE WITH SURFACE AND SUSPENDED TRACK APPLICANTS.**

1. Mark centerline of PLATE on ceiling to determine the mounting location of the POWERTRIP CONNECTOR.
2. Make a hole in the ceiling for the electrical connector in the position that coincides with the ROUND KNOCK OUT.
3. Remove the BOTTOM COVER and retain. See figure on page 1.
4. Remove one ROUND KNOCK OUT where the power is to be passed through. If using (2) BREAKERS remove the BREAKER K.O. Do not remove any other knock outs.
5. Push BREAKER into COVER and keep separated from housing. SEE FIG. 5
6. Attach ELECTRICAL CONNECTOR (provided) to K.O. PLATE in round hole, and secure it using the provided LOCKING NUT.
7. Pass supply wires through hole in ceiling and through ELECTRICAL CONNECTOR.
8. Mount K.O. PLATE to HOUSING using provided PAN HEAD SCREWS.
9. Attach wires per WIRING INSTRUCTIONS BELOW.
10. Remove Dead End Cover if necessary by pulling it out of the track.
11. Slide TRACK onto POWERTRIP EXTENSION CONNECTOR and ensure that the (2) CONTACT BLADES are aligning with the copper wires in the track during assembly. SEE FIG. 1 & 2
12. Tighten LOCKING SCREW.
13. Fasten COVER without pinching any wires using provided TORX screws. SEE FIG. 4
14. Snap the BOTTOM COVER onto the connector.
15. See operating instructions below.



**D. OPERATING POWERTRIP EXTENSION CONNECTOR.  
See IS: P8P1A**

1. Place luminaires on track. Place BREAKER SWITCH to ON position. Turn power ON to supply connector.
2. The BREAKER will automatically switch to OFF if its ratings are exceeded. OFF is designated by a red color on the BREAKER SWITCH.
3. If breaker tripped off: reduce the wattage on the track so the total wattage is less than the wattage specified on the BREAKER. Turn the BREAKER SWITCH to ON.
4. The BREAKER(S) can be used as a manual ON/OFF switch.



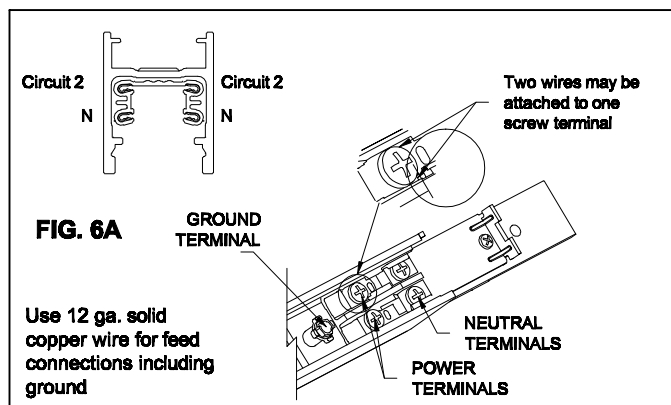
**C. WIRING INSTRUCTIONS - SEE FIG. 6 (NEXT PAGE)**

**1. FOR A ONE CIRCUIT SYSTEM - SEE FIG. 6B**

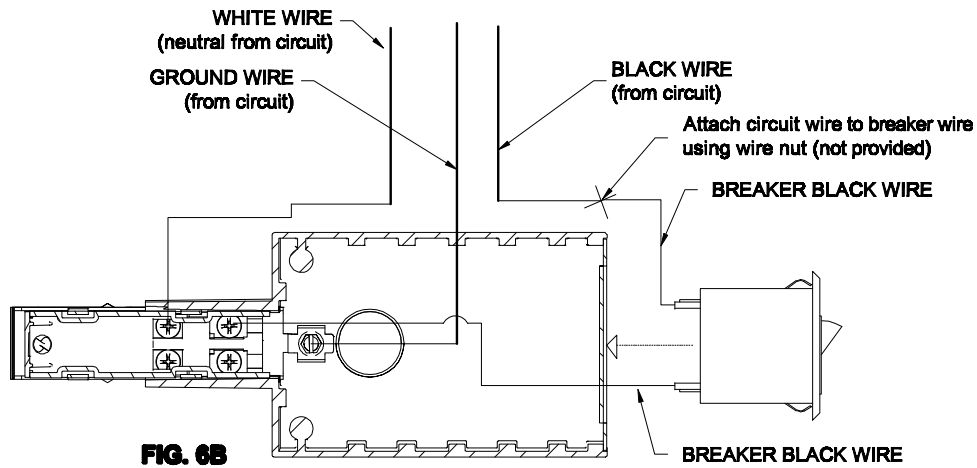
- a. Two BLACK wires will be attached to the CIRCUIT BREAKER upon receiving it.
- b. Three wires will feed in from the CIRCUIT.
- c. Attach the power wire (BLACK), using a wire nut, to one of the BLACK wires from the BREAKER.
- d. Attach the other BLACK wire from the Breaker to one of the POWER TERMINALS and tighten the screw to secure it.
- e. Attach the neutral wire (WHITE) to the corresponding NEUTRAL TERMINAL, and tighten the screw to secure it.
- f. Finally, attach the ground wire to the GROUND TERMINAL, and tighten the screw to secure it.
- g. ALL WIRES AND CONNECTIONS MUST BE INSIDE OF THE POWERTRIP ENCLOSURE

**2. FOR A TWO CIRCUIT SYSTEM - SEE FIG. 6C**

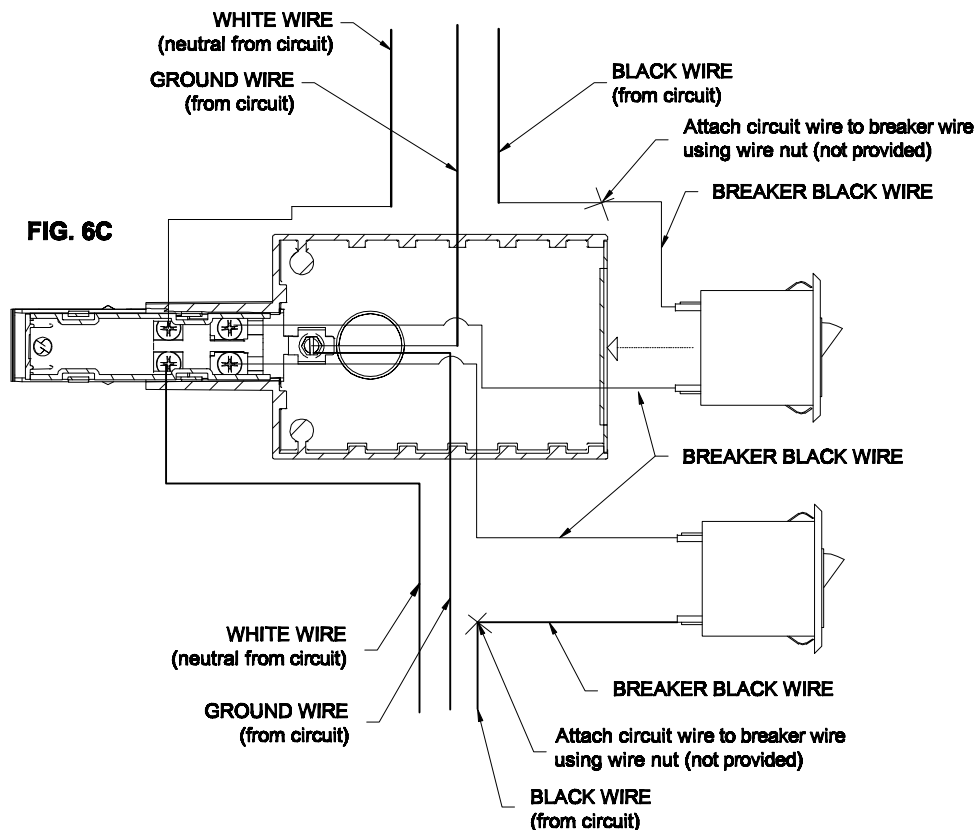
- a. Two BLACK wires will be previously attached to each CIRCUIT BREAKER upon receiving them.
- b. Five or six wires will feed in from the CIRCUIT.
- c. Attach wires per FIG. 6B.
- d. Ensure all connections are tight.
- e. ALL WIRES AND CONNECTIONS MUST BE INSIDE OF THE POWERTRIP ENCLOSURE



631 Airport Road, Fall River, MA 02720 • (508) 879-8131 • Fax (508) 674-4710  
We reserve the right to change details of design, materials and finish.  
www.lightolier.com © 2008 Philips Group • A0609



### CIRCUIT 1



### CIRCUIT 2

631 Airport Road, Fall River, MA 02720 • (508) 679-8131 • Fax (508) 674-4710  
We reserve the right to change details of design, materials and finish.  
[www.lightolier.com](http://www.lightolier.com) © 2008 Philips Group • A0609