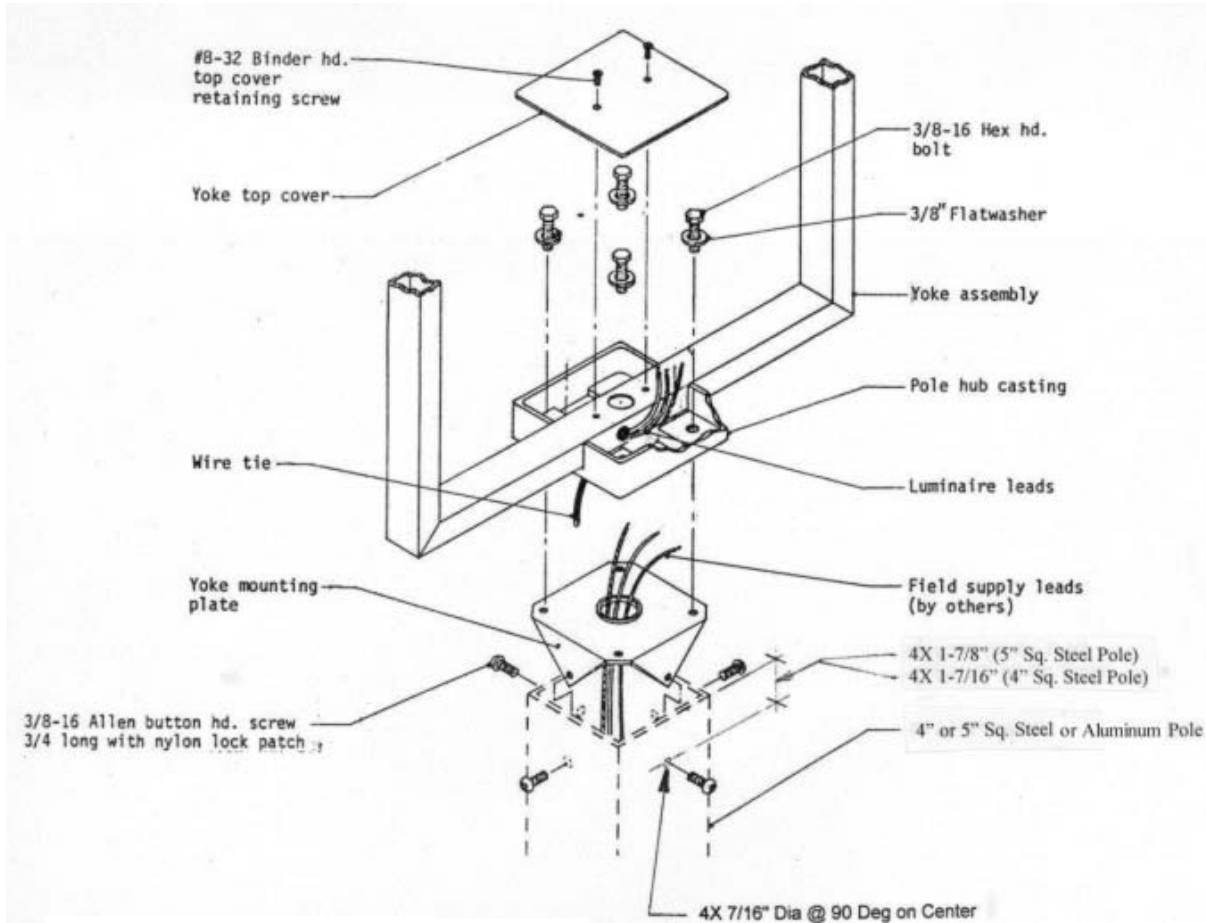


INSTALLATION INSTRUCTIONS

YOKE MOUNTING LUMINAIRES: 4" OR 5" SQUARE STEEL OR ALUMINUM POLES

Philips Lighting North America
Corporation
200 Franklin Square Drive,
Somerset, NJ 08873, USA

Philips Lighting Canada Ltd.
281 Hillmount Road,
Markham ON, Canada L6C 2S3



INSTALLATION PROCEDURES:

1. Feed field supply leads through hole in yoke mounting plate and secure plate inside pole with (4) 3/8-16 allen button hd. screws.
2. Loosen (2) #8-32 binder hd. top cover retaining screws and remove top cover from yoke assembly.
3. Connect luminaire leads to field supply leads (input and grounding) and secure to yoke assembly with wire tie.

CAUTION: Ensure power is disconnected!

4. Position yoke on pole top and secure with (4) 3/8-16 hex hd. bolts with flatwashers through holes in pole hub casting.
5. Reinstall yoke top cover.