

INSTALLATION INSTRUCTIONS

PERFORMANCE SCONCE 101/102

NOTE: HID SCONCE APPROVED FOR INVERTED MOUNT IN DAMP LOCATIONS;
WET LOCATION INVERSION ALLOWED ONLY WITH WLU OPTION.

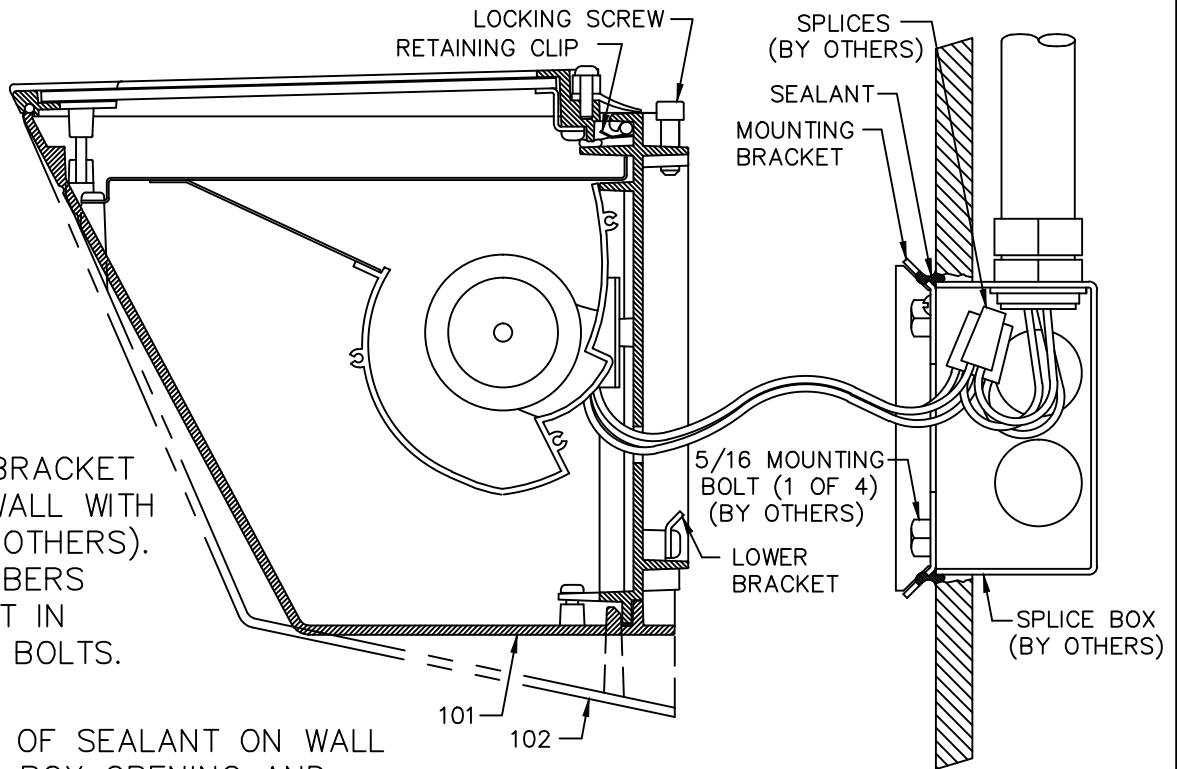
LED SCONCES APPROVED FOR INVERTED MOUNTING IN DAMP LOCATIONS ONLY.

IMPORTANT: READ ALL INSTRUCTIONS BEFORE PERFORMING ANY WORK.
BE SURE ALL POWER IS OFF PRIOR TO INSTALLING LUMINAIRE.

WARNING: LUMINAIRE MUST BE GROUNDING IN ACCORDANCE WITH
APPROPRIATE CODES. FAILURE TO DO SO MAY RESULT IN
SERIOUS INJURY.

STANDARD INSTALLATION

NOTE: MOUNTING BRACKET
IS SECURED TO WALL WITH
5/16 BOLTS (BY OTHERS).
STRUCTURAL MEMBERS
MUST BE PRESENT IN
WALL TO ACCEPT BOLTS.

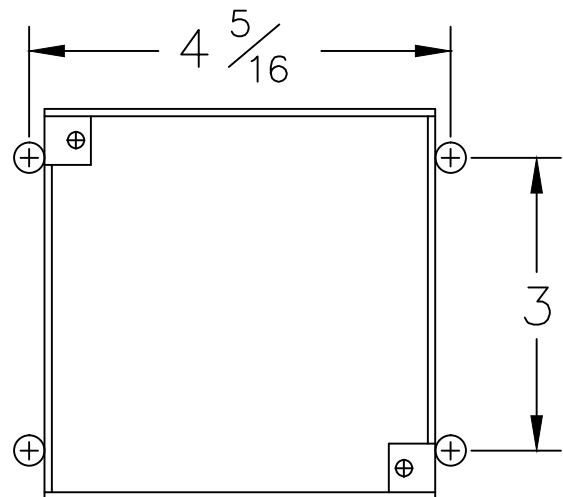


1. APPLY A BEAD OF SEALANT ON WALL
AROUND SPLICE BOX OPENING AND
AROUND MOUNTING HOLES. WHEN
USING A FOUR INCH SQUARE BOX (SHOWN),
FILL GAP BETWEEN WALL OPENING AND
SPLICE BOX WITH SEALANT.

APPLY SEALANT TO THE TOP INSIDE
CORNERS OF THE MOUNTING BRACKET AND
TO THE THREE UNUSED HOLES IN THE TOP
ANGLED FLAP OF THIS BRACKET.

2. PLACE MOUNTING BRACKET OVER SPLICE
BOX AND SECURE TO WALL WITH 5/16 BOLTS
(BY OTHERS). NOTE: SPLICE BOX SCREWS MAY
BE USED TO HOLD THE MOUNTING BRACKET
IN PLACE WHILE THE BOLTS ARE BEING
INSTALLED.

3. MAKE ELECTRICAL CONNECTIONS. FIXTURE
LINE TO SUPPLY LINE, COMMON TO COMMON
AND GROUND TO GROUND.



MOUNTING BOLT PATTERN

PHILIPS

INSTALLATION INSTRUCTIONS

PERFORMANCE SCONCE 101/102

NOTE: HID SCONCE APPROVED FOR INVERTED MOUNT IN DAMP LOCATIONS;
WET LOCATION INVERSION ALLOWED ONLY WITH WLU OPTION.
LED SCONCES APPROVED FOR INVERTED MOUNTING IN DAMP LOCATIONS ONLY.

4.PLACE SPLICES AND EXCESS WIRE IN SPLICE BOX. CAREFULLY ENGAGE LOWER BRACKET TO BOTTOM ANGLED FLAP OF THE MOUNTING BRACKET BEING CAREFUL NOT TO PINCH WIRES. SWING FIXTURE UPWARD SO THAT IT RESTS AGAINST THE WALL. TIGHTEN LOCKING SCREWS.

5.UNSCREW LENS FRAME SCREWS, OPEN FRAME, INSTALL LAMP, CLOSE AND SECURE FRAME BEING CAREFUL NOT TO OVER TIGHTEN THE SCREWS.

NOTE:LENS FRAME ASSEMBLY IS REMOVABLE BY OPENING PARTIALLY, COMPRESSING RETAINING CLIPS WITH HINGE END OF FRAME AND PULLING FORWARD.

PHILIPS

© 2016 Philips Lighting Holding B.V. All rights reserved.

Philips Lighting North America
Corporation
200 Franklin Square Drive,
Somerset, NJ 08873, USA

Philips Lighting Canada Ltd.
281 Hillmount Road,
Markham ON, Canada L6C 2S3

443561001680-B
2 OF 2