

# INSTALLATION INSTRUCTIONS

## 300 LINE CYLINDERS – KNUCKLE MOUNT

IMPORTANT: READ ALL INSTRUCTIONS BEFORE PERFORMING ANY WORK.

BE SURE ALL POWER IS OFF PRIOR TO INSTALLING LUMINAIRE.

WARNING: LUMINAIRE MUST BE GROUNDED IN ACCORDANCE WITH APPROPRIATE CODES. FAILURE TO DO SO MAY RESULT IN SERIOUS INJURY.

### 1. MOUNT J-BOX

#### SURFACE MOUNT

SECURE UNIVERSAL J-BOX (FIG.1) TO MOUNTING SURFACE WITH 1/4" BOLTS (BY OTHERS) ROUTED THROUGH THE TWO OUTSIDE TABS. STRUCTURAL MEMBERS MUST BE PRESENT TO ACCEPT BOLTS.

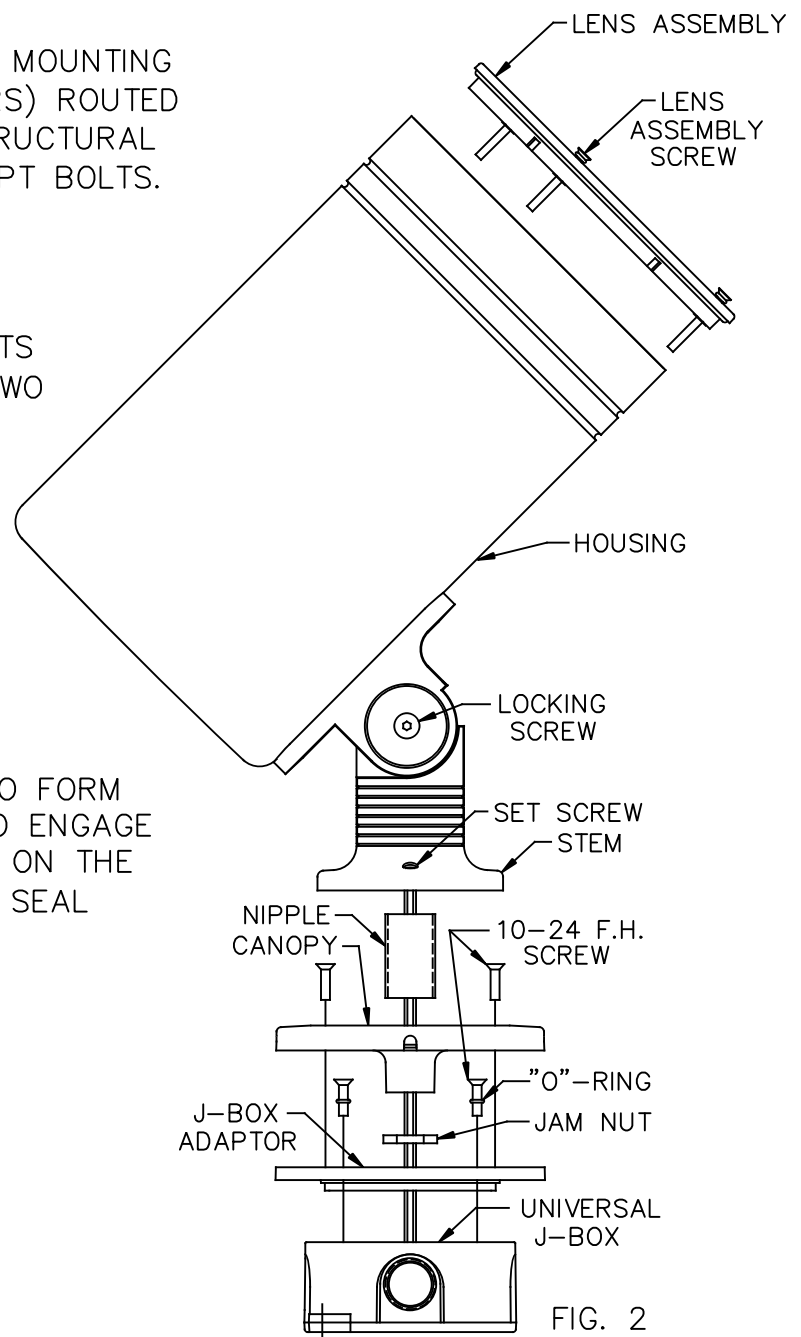
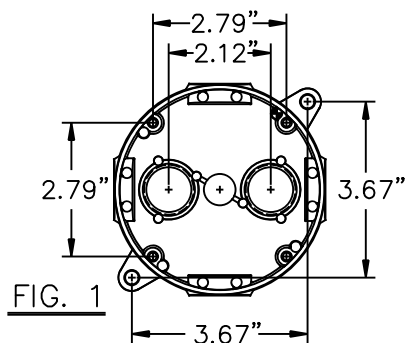
#### RECESSED MOUNT

SECURE UNIVERSAL J-BOX (FIG.1) TO STRUCTURAL MEMBERS WITH 1/4" BOLTS (BY OTHERS) ROUTED THROUGH THE TWO OUTSIDE TABS SO THAT THE J-BOX OPENING WILL BE FLUSH WITH CEILING, WALL OR FLOOR SURFACE.

CONDUIT MAY BE INSTALLED BEFORE OR AFTER THE J-BOX IS MOUNTED. CONDUIT OR FITTINGS AND PLUGS MUST BE SEALED IN WET LOCATIONS.

#### CONCRETE POUR

SECURE UNIVERSAL J-BOX (FIG. 1) TO FORM USING 10-24 SCREWS (BY OTHERS) TO ENGAGE THE FOUR INTERNAL BOSSES LOCATED ON THE 2.79" SQUARE PATTERN. INSTALL AND SEAL CONDUIT OR FITTINGS AND PLUGS.



# INSTALLATION INSTRUCTIONS

## 300 LINE CYLINDERS – KNUCKLE MOUNT

---

REFER TO FIG. 2 TO COMPLETE INSTALLATION.

2. PULL SUPPLY WIRES INTO UNIVERSAL J-BOX. SECURE J-BOX ADAPTOR TO J-BOX USING FOUR 10-24 F.H. SCREWS AND FOUR "O"-RINGS (SUPPLIED).
3. APPLY PIPE SEALANT TO ONE END OF THE NIPPLE. SCREW THIS END INTO THE CANOPY SO THAT APPROXIMATELY 3/16" OF THE NIPPLE EXTENDS OUT BEYOND THE J-BOX SIDE OF THE CANOPY HUB. INSTALL JAM NUT AND TIGHTEN.
4. APPLY SEALANT TO THE OTHER END OF THE NIPPLE. ROUTE LUMINAIRE WIRES THROUGH THE NIPPLE AND SCREW THE CANOPY ASSEMBLY INTO THE STEM OF THE LUMINAIRE UNTILL IT BOTTOMS OUT.
5. MAKE ELECTRICAL CONNECTIONS. SUPPLY LINE TO FIXTURE LINE, COMMON TO COMMON AND GROUND TO GROUND.
6. PLACE SPLICES AND EXCESS WIRE IN J-BOX AND SECURE CANOPY TO J-BOX ADAPTOR USING THE FOUR REMAINING SCREWS (SUPPLIED).
7. UNSCREW THE THREE LENS ASSEMBLY SCREWS AND REMOVE ASSEMBLY. INSTALL LAMP AND REPLACE LENS ASSEMBLY.
8. LOOSEN LOCKING SCREW TO AIM HEAD VERTICALLY. ROTATE HEAD TO AIM HORIZONTALLY. WHEN AIMING IS COMPLETE TIGHTEN THE LOCKING SCREW AND THE SET SCREW.

