

# IS:C4A CALCULITE EVOLUTION

## READ AND UNDERSTAND THESE INSTRUCTIONS BEFORE INSTALLING LUMINAIRE

This luminaire is intended for installation in accordance with the National Electrical Code and local regulations.

To assure full compliance with local codes and regulations, check with your local electrical inspector before installation. To prevent electric shock, turn off electricity at fuse box before proceeding.

Retain these instructions for maintenance reference.

## INSTALLATION PROCEDURE FOR CALCULITE EVOLUTION REFLECTOR TRIMS: C4ARA, C4MR2, C4MRA, C4MRGA, C4MRGD, C4MRP, CAMRW, C4P20GA, C4P20GD AND C4P20A SERIES

### A. FRAME-IN: (FIG. 1)

See Frame-In-Kit Instruction Sheet for installation procedure.

### B. LAMPING: (FIG. 2A, 2B, 2C)

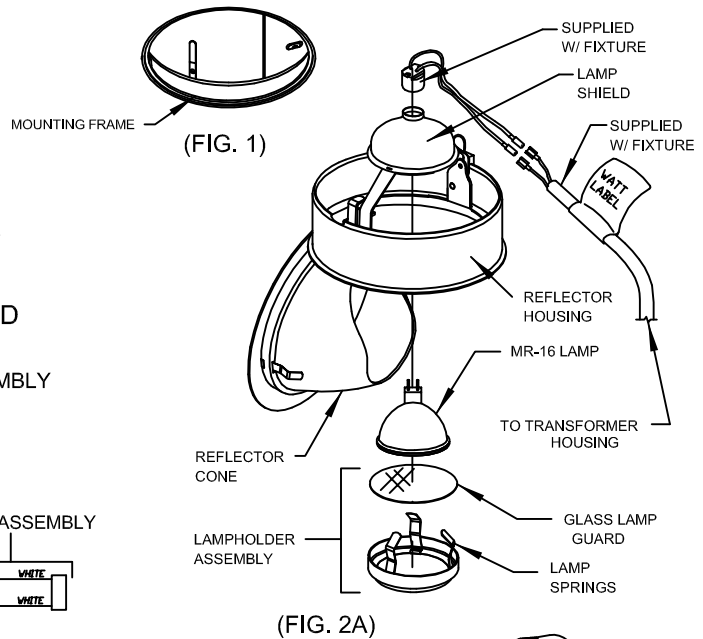
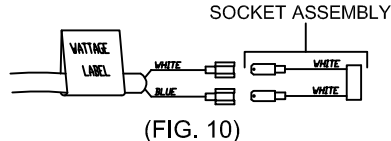
#### • C4MR ADJUSTABLE SERIES (FIG. 2A)

1. Insert MR-16 LAMP between LAMP SPRINGS until face of LAMP sits firmly on GLASS LAMP GUARD.

**WARNING: RISK OF FIRE. GLASS LAMP GUARD MUST BE INSTALLED.**

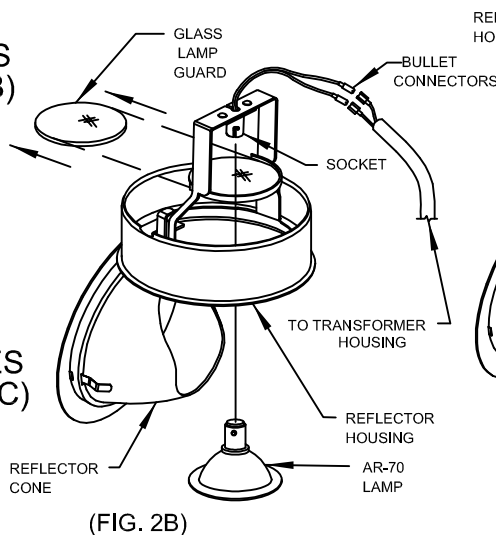
2. Push assembled MR-16 LAMP and LAMPHOLDER ASSEMBLY into LAMP SHIELD until LAMP SPRINGS engage in the LAMP SHIELD and are secured in place.

3. Attach SOCKET to bi-pin prongs on MR-16 LAMP.



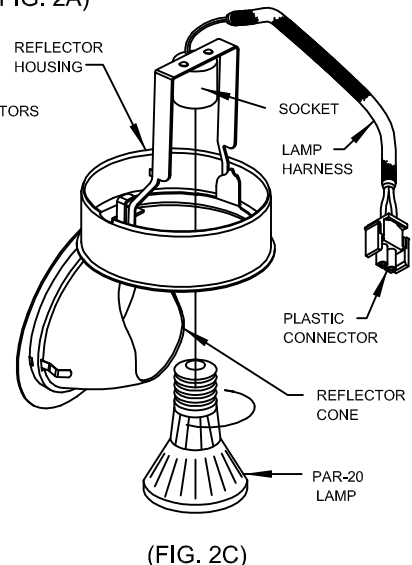
#### • C4AR ADJUSTABLE SERIES (FIG. 2B)

1. Remove GLASS LAMP GUARD from it's holder.
2. Insert AR-70 LAMP into SOCKET. Press fully into SOCKET, then rotate LAMP clockwise to lock pins in place.
3. Re-Install GLASS LAMP GUARD



#### • C4P20 ADJUSTABLE SERIES (FIG 2C)

1. Screw LAMP clockwise into SOCKET.

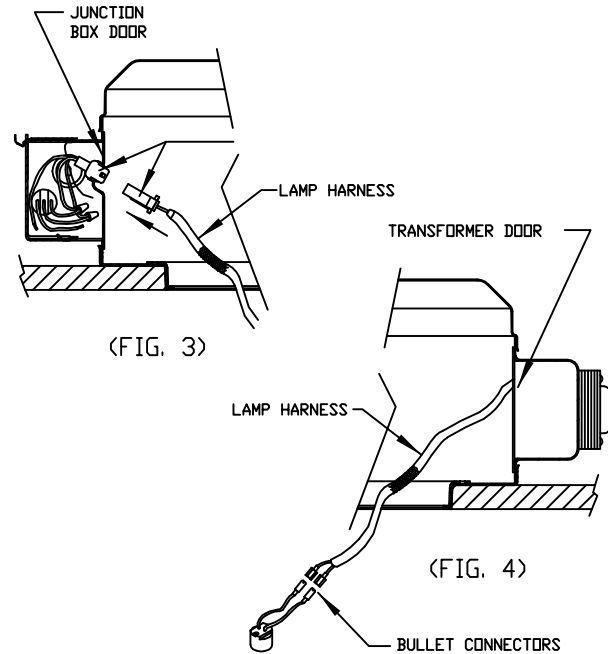


**WARNING: 1. LAMP MANUFACTURERS REQUIRE THE GLASS LAMPGUARD BE IN PLACE BEFORE ENERGIZING LAMP, AND THAT GREAT CARE MUST BE TAKEN THAT LAMP IS FULLY COOLED BEFORE RELAMPING. AVIOD FINGER MARKS ON INSIDE OF LAMP FOR THEY MAY CAUSE SHORT LAMP LIFE AND POSSIBLE BREAKAGE. 2. USE ONLY REFLECTOR TRIMS PROVIDED BY LIGHTOLIER. USE OF OTHER MANUFACTURER'S REFLECTOR TRIMS MAY VOID THE UNDERWRITERS LABORATORIES LISTING AND COULD CONSTITUTE A FIRE HAZARD.**

# IS:C4A CALCULITE EVOLUTION

## C. PLUG-IN: (FIG. 3 + 4)

Align and plug PLASTIC CONNECTOR of LAMP HARNESS into mating PLASTIC CONNECTOR: for C4P20 SERIES trims, mating CONNECTOR is located on JUNCTION BOX DOOR (FIG. 3); for C4AR SERIES trims disconnect MR16 socket supplies with fixture and attach BULLET CONNECTORS as shown (FIG. 4). For C4MR SERIES trims no connection is required.



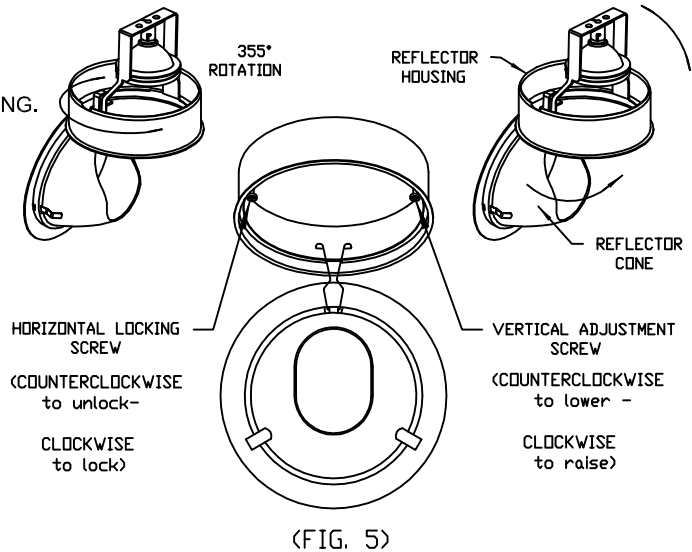
## D. PUSH-IN:

Push REFLECTOR HOUSING straight up into MOUNTING FRAME, (FIG. 1). Retaining springs will secure REFLECTOR HOUSING in place.

## E. ADJUSTMENTS: (FIG. 5)

1. Adjust vertical position of LAMP using a phillips screw-driver. Rotate VERTICAL ADJUSTMENT SCREW clockwise to lower LAMP, and counterclockwise to raise LAMP.
2. To lock horizontal position of trim, tighten HORIZONTAL LOCKING SCREW using a phillips screwdriver. (Clockwise to lock, counterclockwise to unlock)
3. Swing REFLECTOR CONE up into REFLECTOR HOUSING.

**NOTE:** To remove REFLECTOR HOUSING first disengage CONE ASSEMBLY by pulling down on flange at largest side of cone, then grasp legs on inner ring of REFLECTOR HOUSING and rotate counterclockwise while pulling down.



## CARE AND MAINTENANCE OF REFLECTORS

If handling of reflectors with anodize finish is required, the use of clean white or plastic film gloves is recommended to avoid fingerprints.

Anodized surfaces can be cleaned by the following methods:

1. Wipe off with a soft, clean, dry, lint-free cloth.
2. Wipe off with a soft, clean cloth dampened in mild detergent.
3. Wipe off with a clean cloth dampened with a solution of wetting agent and water (such as 2oz. per gallon "Pluronic L62-LF" by Wyandotte Products). Then wipe dry.

