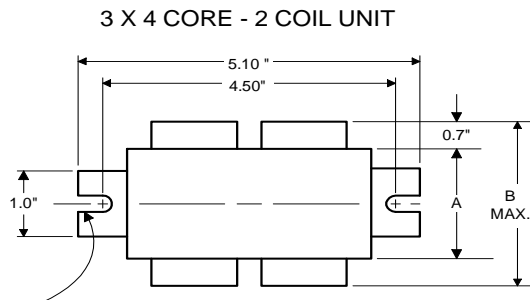


# PHILIPS ADVANCE

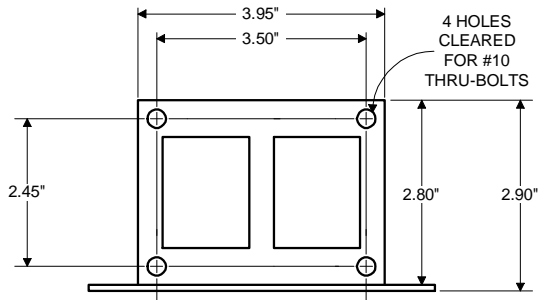
Metal  
Halide  
Lamp Ballast

Catalog Number 71A52A1  
For 70W M139  
60 Hz HX-HPF  
Status: Active

### DIMENSIONS AND DATA



0.25" WIDE  
2 SLOTS



INPUT VOLTS	120	277	347		
CIRCUIT TYPE	HX-HPF				
POWER FACTOR (min)	90%				
REGULATION					
Line Volts	±5%				
Lamp Watts	±7%				
LINE CURRENT (Amps)					
Operating.....	0.81	0.35	0.28		
Open Circuit.....	1.90	0.80	0.65		
Starting.....	1.05	0.45	0.38		
UL TEMPERATURE RATINGS					
Insulation Class	H(180°C)				
Coil Temperature Code	1029				
MIN. AMBIENT STARTING TEMP.	-30°F or -35°C				
NOM. OPEN CIRCUIT VOLTAGE	255				
INPUT VOLTAGE AT LAMP DROPOUT.....	90	208	260		
INPUT WATTS	94				
RECOMMENDED FUSE (Amps).....	4	2	2		
CORE and COIL					
Dimension (A)	1.50				
Dimension (B)	2.80				
Weight (lbs.)	5				
Lead Lengths	12"				
CAPACITOR REQUIREMENT					
Microfarads	8.0				
Volts (min.)	280				
Fault Current Withstand (amps)					
60 Hz TEST PROCEDURES (Refer to Advance Test Procedure for HID Ballasts - Form 1270)					
High Potential Test (Volts)					
1 minute	1500				
2 seconds	2500				
Open Circuit Voltage Test (Volts)	230-280				
Short-Circuit Current Test (Amps)					
Secondary Current	1.10-1.40				
Input Current.....	0.85-1.25	0.35-0.56	0.30-0.45	-	-

Capacitor: 7C080L30RA



Capacitance: 8  
Dia/Oval Dim: 1.25  
Height: 2.75  
Temp Rating: 105°C

#### Wiring Diagram:

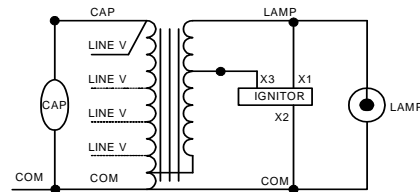


Fig. K

#### Ordering Information

Order Suffix

Description

Ignitor: LI533-H4



Ballast to Lamp Distance (BTL) = 5 feet  
Temp Rating: 105°C

Data is based upon tests performed by Philips Lighting Electronic N.A. in a controlled environment and representative of relative performance. Actual performance can vary depending on operating conditions. Specifications are subject to change without notice.

Philips Lighting Electronic N.A.

10275 West Higgins Road · Rosemont, IL 60018 · Tel:800-322-2086 Fax:888-432-1882  
Customer Support/ Technical Service:800-372-3331 · OEM Support: 866-915-5886

08/23/13