

Day-Brite

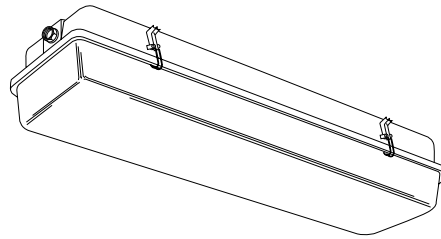
CFI

by  Signify

Industrial

Vaporlume DW

2' sealed industrial T5,
T5HO, or T8



Project: _____
 Location: _____
 Cat.No: _____
 Type: _____
 Lamps: _____ Qty: _____
 Notes: _____

The Day-Brite / CFI Vaporlume sealed industrial DW is a wet location listed luminaire with a non-metal exterior, housing and lens assembly.

Ordering guide

Example: DWAE217-UNV-1/2-EBLHE

Family	Application	Lens	Hubs Installed	No. of Lamps Per Cross Section	Lamp Type	Voltage	Options
<input type="text" value="D"/>	<input type="text" value="W"/>	<input type="text" value="A"/>	<input type="text" value="E"/>		—	—	
D Sealed industrial	W Wet Location	A DR Acrylic	E Ends only	(not included) 1 2	14 14WT5 (22") 17 17WT8 (24") 24HO 24WT5HO (22")	UNV Universal 120/277V 120 120V 277 277V 347 347V	1/1 One 1-lamp ballast 1/2 One 2-lamp ballast EB Electronic ballast, <10% THD EB10R T8 electronic ballast, program rapid start, <10% THD EBHE T8 electronic ballast, high efficiency, std. ballast factor EBLHE T8 electronic ballast, high efficiency, low ballast factor EBHHE T8 electronic ballast, high efficiency, high ballast factor EBSD Electronic step dimming ballast, .88 ballast factor EBD7 Advance Mark 7 dimming ballast, 0-10V (low voltage) control EBDX Advance Mark 10 dimming ballast, phase control EBD Electronic dimming ballast, customer specified E1 B100 emerg. ballast, 350-450 lumens, 120/277V E7 B60 emerg. ballast, 600-700 lumens, 120/277V GLR Fusing, fast blow MD360W Wet location occupancy sensor, external See section 1600-OA for options info. and sheet 1455-IF for mounting hardware.

Accessories (order separately)

- TBK Stainless Steel Top Bracket Kit (pair of brackets plus mounting hardware)
- EBK Stainless Steel End Bracket Kit (pair of brackets plus mounting hardware)
- WBK Stainless Steel Wraparound Kit (pair of brackets plus mounting hardware)
- FKR-126 Chain hanger set (requires TBK)



DW Vaporlume sealed industrial

2', T5, T5HO, or T8

Application

- Acceptable for outdoor as well as indoor installations.
- Can be surface (wall/ceiling) or suspended mounted unless otherwise specified.
- Wet Location—Areas of high humidity, water vapor, rain, incidental water spray, or other non-corrosive or non-flammable liquid.
- IP65 rating standard.

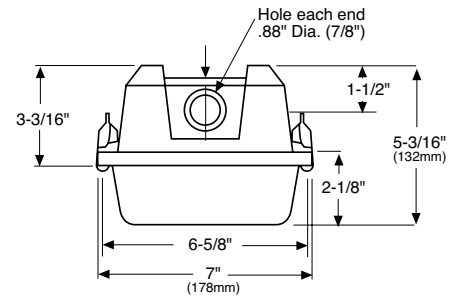
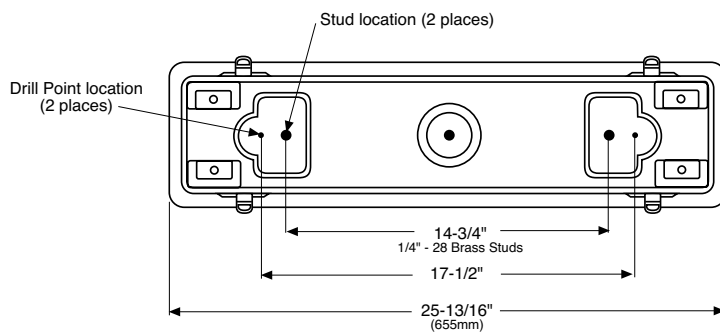
Construction/Finish

- Non-conductive, non-corrosive housing.
- Smooth exterior surface for easy cleaning.
- Molded fiberglass reinforced polyester body.
- High impact DR acrylic molded lens.
- Continuous closed cell, foam in-place gasket.
- ABS cam action latches standard.
- Lighting channel has high reflectance baked white enamel finish.
- Wet location hubs installed.

Electrical

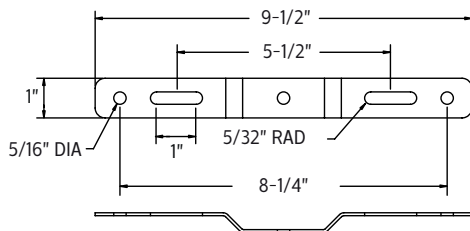
- cULus listed for wet locations. Also suitable for damp locations.
- Self-contained fluorescent emergency ballasts available.

Dimensions

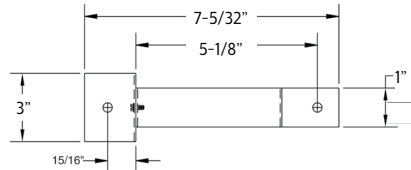


Mounting Brackets

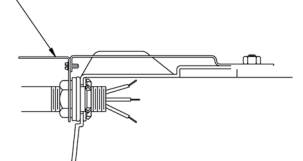
TBK - Top Mounting Bracket



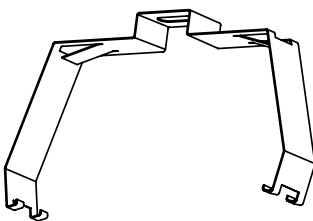
EBK - End Mounting Bracket



EBK - End Mounting Bracket



WBK - Wraparound Mounting Bracket



DW Vaporlume sealed industrial

2', T5, T5HO, or T8

Photometry

DW 2' 2 Lamp F20

Efficiency – 76.6%

LER – 35

TER – 19

		Candlepower				Light Distribution				Average Luminance				
		Angle	End	45	Cross	Degrees	Lumens	% Lamp	% Luminaire	Angle	End	45'	Cross	
Catalog No.	DWAE220	0	466	466	466	0-30	368.	14.6	19.0	45	2970	3416	3703	
Test No.	12122	5	454	462	469	0-40	610.	24.2	31.6	55	2679	3326	3717	
S/MH	1.4	15	429	451	469	0-60	1127.	44.7	58.3	65	2405	3333	3933	
Lamp Type	F20	25	384	427	457	0-90	1697.	67.3	87.9	75	2021	3384	4295	
Lumens/Lamp	1260	35	325	395	430	90-180	234.	9.3	12.1	85	1414	3405	4686	
Ballast Factor	.95	45	261	350	388	0-180	1931.	76.6	100.0					
Input Watts	53	55	197	301	346	Coefficients of Utilization								
Comparative yearly lighting energy cost per 1000 lumens – \$6.86 based on 3000 hrs. and \$.08 pwr KWH. The photometric results were obtained in the Day-Brite laboratory which is NVLAP accredited by the National Institute of Standards and Technology.		65	137	252	309	EFFECTIVE FLOOR CAVITY REFLECTANCE 20 PER (pfc=0.20)								
		75	78	198	265	pcc				70				
		85	27	135	201	pw				50				
		95	15	89	143									
		105	13	64	104	RCR								
		115	9	43	68	1	79	75	71	76	72	69	67	64
		125	5	26	39	2	71	64	58	68	62	57	58	53
		135	3	14	22	3	65	56	49	62	54	48	51	45
		145	1	7	11	4	59	49	42	56	48	41	45	39
		155	1	3	5	5	54	43	36	51	42	35	39	33
165	2	3	2	6	49	39	31	47	37	31	35	29		
175	1	2	2	7	45	34	27	43	33	27	31	26		
				8	42	31	24	40	30	24	28	22		
				9	38	28	21	37	27	21	25	20		
				10	36	25	19	34	24	18	23	18		



Some luminaires use fluorescent or high intensity discharge (HID) lamps that contain small amounts of mercury. Such lamps are labeled, "Contain Mercury" and/or the symbol "HG". Lamps that contain mercury must be disposed of in accordance with local requirements. Information regarding lamp recycling and disposal can be found at www.lamprecycle.org

