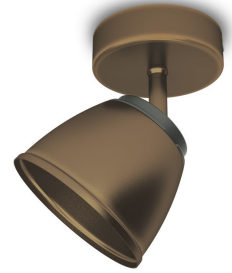




PHILIPS  
myLiving  
Spot light  
County  
bronze  
LED



53350/06/16

# Decorate your home with light

Authentic rustic style meets the latest technology, Philips myLiving County is an elegant metal dual spot in bronze. The traditional shape houses advanced LEDs which cast plenty of warm white light that's bright and beautiful like halogen.

## Sustainable light solutions

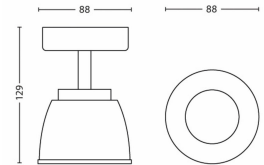
- Energy saving
- High quality LED light
- Warm white light
- Philips offers 5 year warranty on the LED module and driver

## Special characteristics

- Adjustable spot head

## Designed for your living- and bedroom

- Perfect to relax and socialise
- Create a stylish and welcoming atmosphere



# PHILIPS

# Highlights

## Energy saving



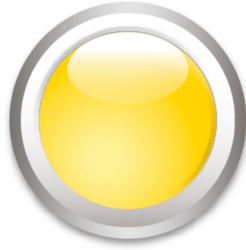
This Philips energy saving lamp conserves energy compared to traditional light sources, helping you to save money on your electricity bills and do your bit for the environment.

## High quality LED light



The LED technology, integrated into this Philips lamp, is a uniquely developed solution by Philips. While instantly turned on, it enables an optimal light output and brings out vivid colors in your home.

## Warm white light



Light can have different color temperatures, indicated in units called Kelvin (K). Lamps with a low Kelvin value produce a warm, more cosy light, while those with a higher Kelvin value produce a cool, more energising light. This Philips lamp offers warm white light for a cosy atmosphere.

## 5 year warranty on LED system



On top of the standard 2 year warranty for this lamp, Philips offers 5 year warranty on the LED system, meaning the LED module and the driver in this lamp.

## Adjustable spot head



Direct the light where you want it most by simply adjusting, rotating or tilting the spot head of the lamp.

## Perfect to relax and socialise



The living room is the heart of any home - a place where families gather to relax and guests socialise. Lighting for your living- and bedroom has to be flexible and easy to adjust to its different uses throughout the day. Careful placement of different light sources and playing with light layering helps create the feeling of space and to give the room a warm and welcoming feel.

## Create a stylish atmosphere



This light is designed around the latest tastes, trends and lifestyles to blend effortlessly into your décor and define the localised ambiance you have always desired.

# Specifications

## Design and finishing

- Color: bronze
- Material: metal

## Extra feature/accessory incl.

- 5 years warranty on the LED module: Yes
- Adjustable spot head: Yes
- LED integrated: Yes

## Miscellaneous

- Especially designed for: Living- & Bedroom
- Style: Heritage
- Type: Spot light
- EyeComfort: No

## Power consumption

- Energy Efficiency Label: A+

## Product dimensions & weight

- Height: 12.9 cm
- Length: 8.8 cm
- Net weight: 0.282 kg
- Width: 8.8 cm

## Service

- Warranty: 5 year(s)

## Technical specifications

- Lifetime up to: 20,000 hour(s)
- Light source equivalent to traditional bulb of: 29 W
- Total lumen output fixture: 330 lm
- Bulb technology: LED, 230 V
- Light color: warm white
- Mains power: Range 220 V – 240 V, 50–60 Hz
- Fixture dimmable: No
- LED: Yes
- Number of bulbs: 1
- Wattage bulb included: 4 W
- IP code: IP20, protection against objects bigger than 12.5 mm, no protection against water
- Class of protection: I – earthed

## Packaging dimensions & weight

- SAP EAN/UPC – Piece: 8718696125519
- EAN/UPC – Case: 8718696215968
- Height: 14.8 cm
- SAP Gross Weight EAN (Piece): 0.356 kg
- Weight: 0.356 kg
- Net Weight (Piece): 0.282 kg
- SAP Height (Piece): 148.000 mm
- SAP Length (Piece): 93.000 mm
- SAP Width (Piece): 93.000 mm
- Width: 9.3 cm
- Length: 9.3 cm



Issue date: 2019-04-01  
Version: 0.398

© 2019 Signify Holding. All rights reserved. Signify does not give any representation or warranty as to the accuracy or completeness of the information included herein and shall not be liable for any action in reliance thereon. The information presented in this document is not intended as any commercial offer and does not form part of any quotation or contract, unless otherwise agreed by Signify. Philips and the Philips Shield Emblem are registered trademarks of Koninklijke Philips N.V.

[www.lighting.philips.com](http://www.lighting.philips.com)