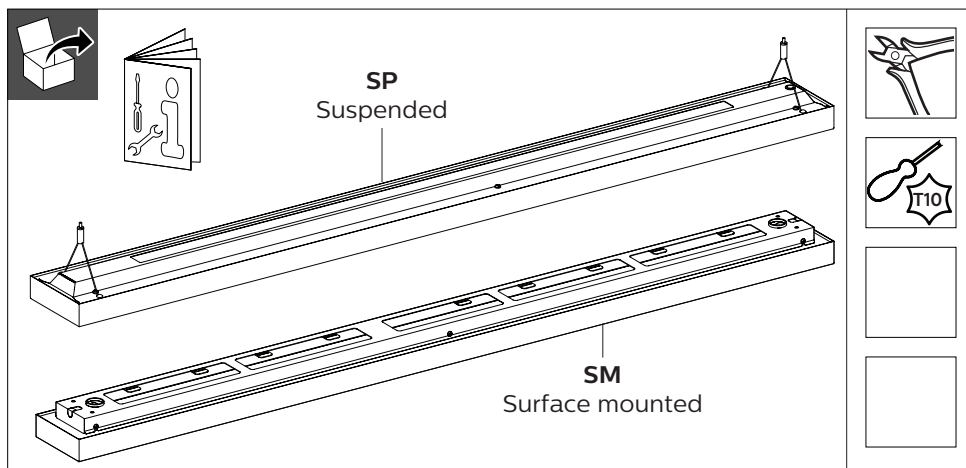


# PHILIPS

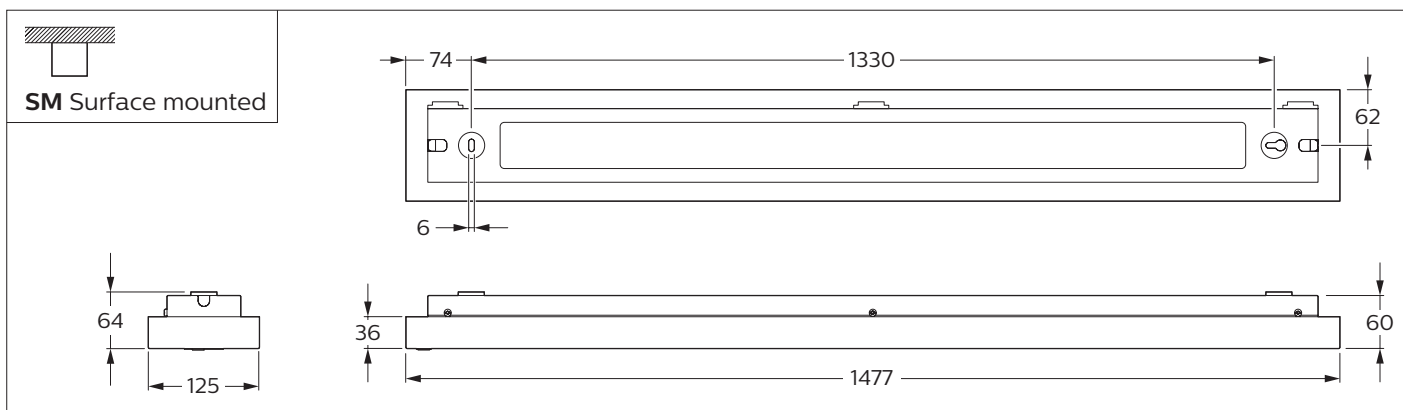
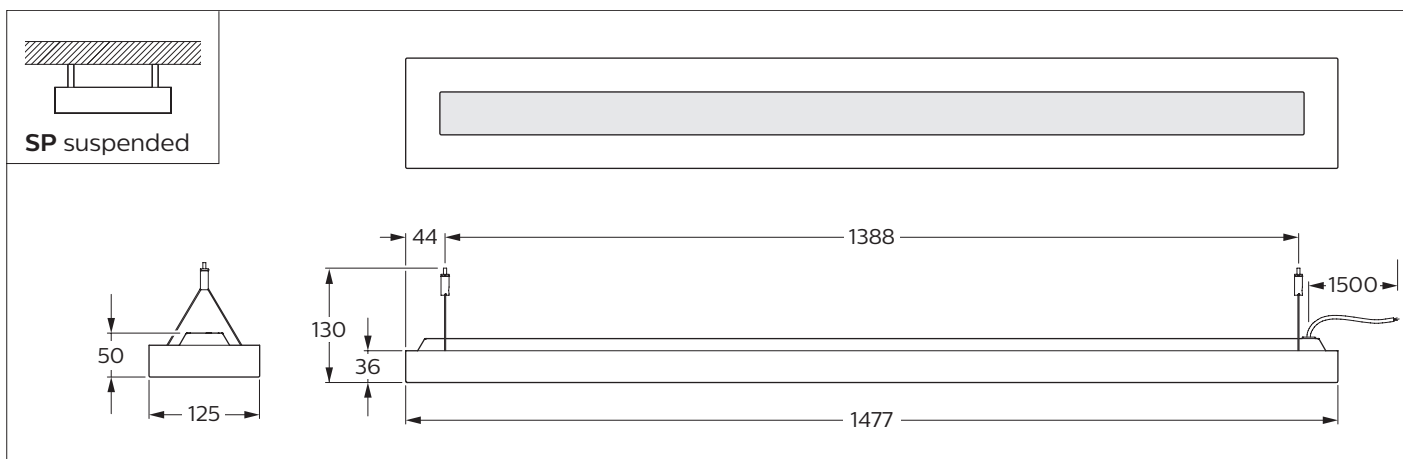
## TrueLevel

### SP54xP/SM54xC



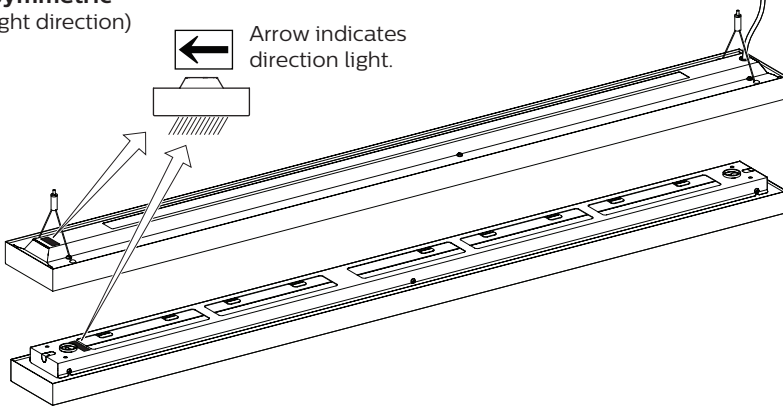
		kg
SP54xP	Suspended	5.0
	Suspended ACL	5.2
SM54xC	Surface mounted	5.5
	Surface mounted ACL	5.8

Suspension set contents						
SMT	SP54xP	1x	1x	1x	2x	3x

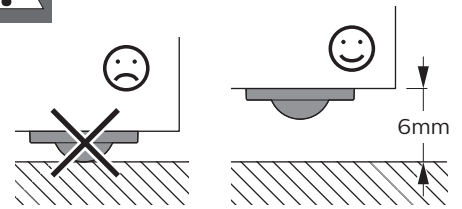


## Asymmetric (Light direction)

← Arrow indicates  
direction light.



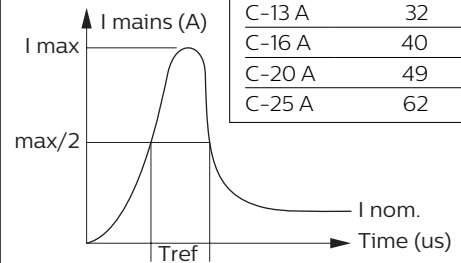
**ACL**  
versions only



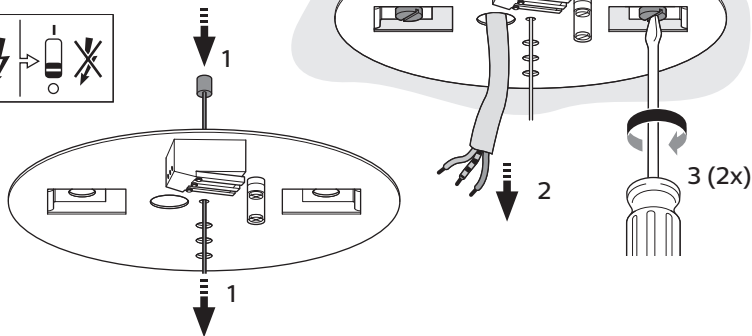
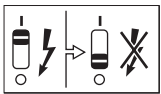
## Inrush current

### Electrical characteristics

I <sub>max</sub> (A)	24.9
T <sub>ref</sub> (μs)	215
MCB	Luminaire max.
B-10 A	15
B-13 A	19
B-16 A	24
B-20 A	30
B-25 A	37
C-10 A	25
C-13 A	32
C-16 A	40
C-20 A	49
C-25 A	62



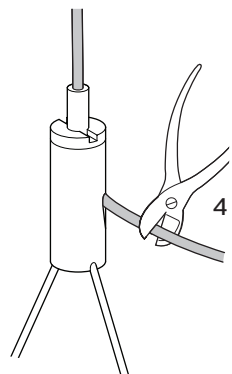
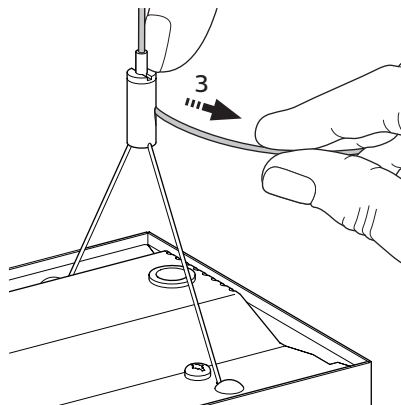
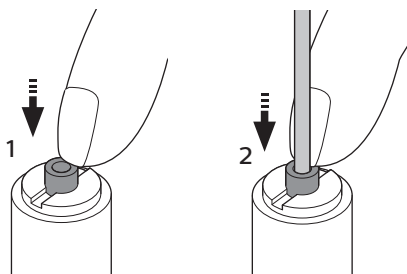
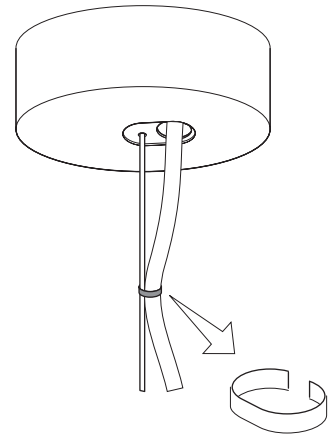
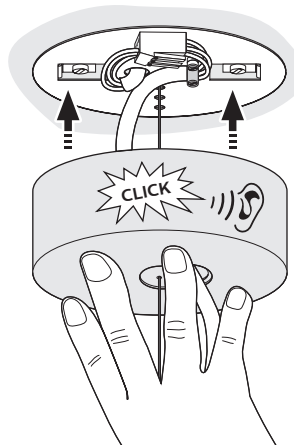
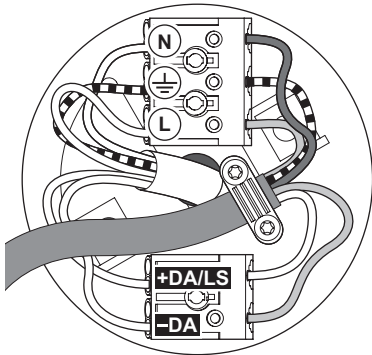
## SMT Suspended



## DALI PSD

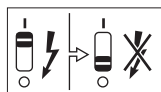
Black (L)  
Yellow-Green (N)  
Blue (N)  
Orange-Brown +DA/LS  
Purple-Grey -DA

Min. 5x0,75mm<sup>2</sup>  
Max. 5x2,50mm<sup>2</sup>  
Ø6-Ø13mm





## SM Surface mounted

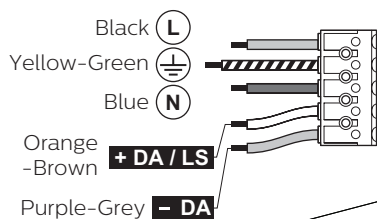


Not  
included

1

2

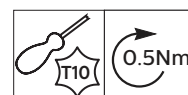
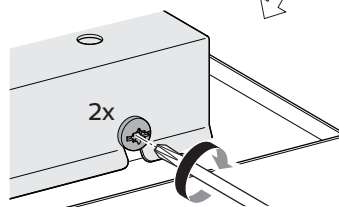
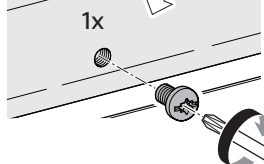
### DALI PSD



Min. 5x0,75mm<sup>2</sup>  
Max. 5x2,50mm<sup>2</sup>

3

4



- The luminaire shall be installed by a qualified electrician and wired in accordance with the latest IEE electrical regulations or the national requirements.
- Please do not remove the protect film before installing to avoid scraping or dirtying the optical part.
- Indoor use only.
- During installation or maintaining the luminaire please use gloves to avoid spots on the cover.  
To remove dirt and spots use the following:
  - Dust: use micro fiber cloths only
  - Fingerprints, etc.: use a cleaner for synthetic materials with antistatic properties.



ATTENTION  
OBSERVE PRECAUTIONS  
FOR HANDLING  
ELECTROSTATIC  
SENSITIVE  
DEVICES



© 2018 Philips Lighting Holding B.V.

All rights reserved. Reproduction in whole or in part is prohibited without the prior written consent of the copyright owner. The information presented in this document does not form part of any quotation or contract, is believed to be accurate and reliable and may be changed without notice. No liability will be accepted by the publisher for any consequence of its use. Publication thereof does not convey nor imply any license under patent- or other industrial or intellectual property rights.

Philips Lighting Holding B.V.  
The Netherlands