

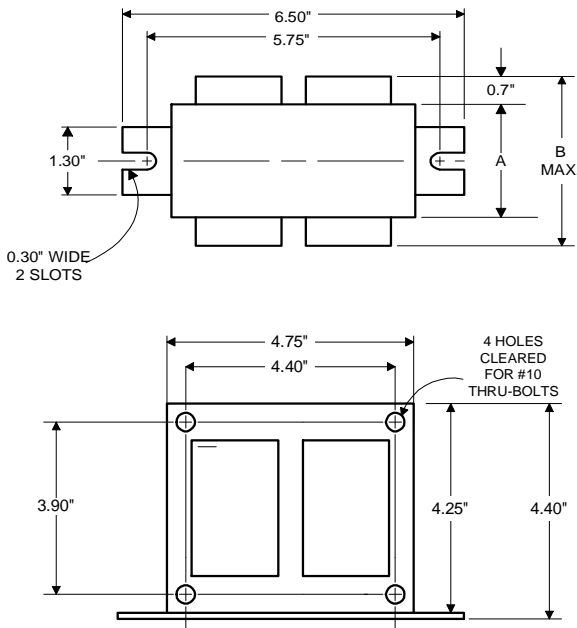
# PHILIPS ADVANCE

Metal  
Halide  
Lamp Ballast

Catalog Number 71A5792A  
For 250W M138/M153 (P.S.)  
60 Hz SUPER-CWA  
Status: Active

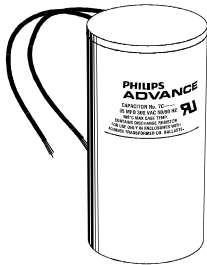
## DIMENSIONS AND DATA

4 1/4 X 4 3/4 CORE - 2 COIL UNIT



	120	208	240	277
INPUT VOLTS				
CIRCUIT TYPE	SUPER-CWA			
POWER FACTOR (min)	90%			
REGULATION				
Line Volts	±10%			
Lamp Watts	±10%			
LINE CURRENT (Amps)				
Operating.....	2.50	1.45	1.25	1.10
Open Circuit.....	1.40	0.80	0.70	0.65
Starting.....	1.90	1.10	0.96	0.85
UL TEMPERATURE RATINGS				
Insulation Class	H(180°C)			
Coil Temperature Code	1029			
MIN. AMBIENT STARTING TEMP.	-30°F or -35°C			
NOM. OPEN CIRCUIT VOLTAGE	275			
INPUT VOLTAGE AT LAMP DROPOUT.....	60	104	120	138
INPUT WATTS	291			
RECOMMENDED FUSE (Amps).....	8	5	5	3
CORE and COIL				
Dimension (A)	1.50			
Dimension (B)	3.10			
Weight (lbs.)	9.5			
Lead Lengths	12"			
CAPACITOR REQUIREMENT				
Microfarads	17.0			
Volts (min.)	330			
Fault Current Withstand (amps)				
60 Hz TEST PROCEDURES (Refer to Advance Test Procedure for HID Ballasts - Form 1270)				
High Potential Test (Volts)				
1 minute	1500			
2 seconds	2500			
Open Circuit Voltage Test (Volts)	250-300			
Short-Circuit Current Test (Amps)				
Secondary Current	2.38-2.90			
Input Current.....	1.58-2.40	0.90-1.35	0.80-1.20	0.68-1.05

Capacitor: 7C170P40



Capacitance: 17  
Dia/Oval Dim: 1.75  
Height: 3.75  
Temp Rating: 105°C

Wiring Diagram:

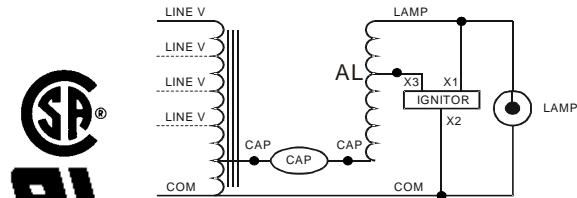


Fig. M7

Ordering Information

Order Suffix

Description

Ignitor: LI533-H4



Red (X1)  
White (X2)  
Blue (X3)

Ballast to Lamp Distance  
(BTL) = 5 feet  
Temp Rating: 105°C

Data is based upon tests performed by Philips Lighting Electronic N.A. in a controlled environment and representative of relative performance. Actual performance can vary depending on operating conditions. Specifications are subject to change without notice.

Philips Lighting Electronic N.A.

10275 West Higgins Road · Rosemont, IL 60018 · Tel:800-322-2086 Fax:888-432-1882  
Customer Support/ Technical Service:800-372-3331 · OEM Support: 866-915-5886

08/04/09