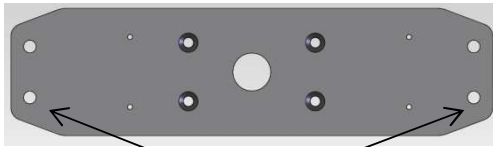


# FX SERIES WALL MOUNT INSTRUCTIONS

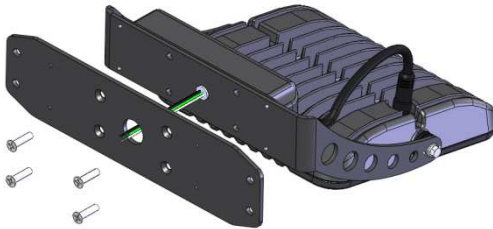


## **WARNING Protect personnel against electrical shocks**

The luminaire connections shall be performed by qualified personnel in conformance with local and national electrical codes. Ensure that the AC service is OFF before installation or maintenance. Do not switch AC service to ON until the entire installation is complete.



Mounting Holes



### **1) Mounting Template**

Use wall plate as mounting template using 4 mounting holes as shown.

### **2) Assemble Mounting Plate**

Attach plate to fixture using 4 bolts provided, ensure wires pass freely thru plate.

### **3) Connecting AC Power.**

Connect AC wires from electrical box to wires provided from fixture. Ensure excess wire is properly placed inside electrical box to prevent pinching or damage.



**For safety reasons, the ground leads must always be connected before any other leads.**

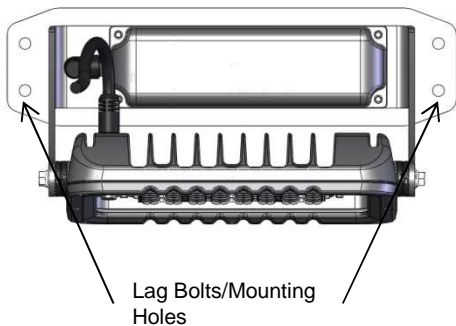
### **4) Mounting**

Mount fixture with 4 lag bolts (provided by others) to surface. Use proper mounting hardware suited for surface in which fixture is being mounted to.

### **4) Aiming Housing**

Loosen positioning bolts on side of housing to allow housing angle to be adjusted. Point fixture as needed. Tighten bolts to fully secure positioning.

**Torque bolts 10 to 15 ft-lb**



Lag Bolts/Mounting Holes



Positioning Bolts



**CAUTION Prevent over torque damage**  
Do not over torque nuts and bolts.