

INSTALLATION INSTRUCTIONS

SurgiCare Surgical Troffer

Series: SSTR24, SSTR22, SSTR14

CAUTION! – READ THIS FIRST
IMPORTANT SAFETY INSTRUCTIONS

CAUTION: THE INSTALLATION AND SERVICING OF THIS PRODUCT SHOULD BE PERFORMED BY A QUALIFIED ELECTRICIAN OR SERVICE PERSONNEL
ATTENTION : L'INSTALLATION ET L'ENTRETIEN DE CE PRODUIT DOIVENT ÊTRE EFFECTUÉS PAR UN ÉLECTRICIEN OU UN MEMBRE DU PERSONNEL QUALIFIÉ.

CAUTION--READ THIS FIRST IMPORTANT SAFETY INSTRUCTIONS

* Carefully read the instructions pertaining to your fixture. IF YOU HAVE ANY QUESTIONS REGARDING THE PROPER INSTALLATION OR LOCAL CODES, CONSULT A QUALIFIED ELECTRICIAN.

* To avoid shock hazard, do not work with live electrical wires.

* Install the fixture in only indoor applications.

* Do not install outdoors or in applications other than the intended use.

* Install and wire the fixture in locations in accordance with all national, state and local codes.

WARNING: THIS PRODUCT MUST BE INSTALLED IN ACCORDANCE WITH THE APPLICABLE INSTALLATION CODE BY A PERSON FAMILIAR WITH THE CONSTRUCTIONS AND OPERATION OF THE PRODUCT AND THE HAZARDS INVOLVED.

WARNING: RISK OF FIRE. MINIMUM OF 90°C SUPPLY CONDUCTOR. CONSULT A QUALIFIED ELECTRICIAN TO ENSURE CORRECT BRANCH CIRCUIT CONDUCTOR.

WARNING: TO AVOID SHOCK HAZARD, DISCONNECT THE POWER AT THE PANEL BOARD (CIRCUIT BREAKER BOX) BEFORE BEGINNING INSTALLATION.

A. GENERAL NOTES

1. Lens Orientation

SSTR sealed surgical fixtures can be ordered with either an asymmetric or symmetric lens option. If ordered with the asymmetric lens, the fixture must be oriented with the arrows on the "Light Direction" labels pointing to the side requiring more light – typically toward the surgical field in the center of the room. The "Light Direction" labels can be located on the lens' protective wrapping and/or on the inside edge of the door frame. The door-housing assembly is factory assembled as a unit. The door assembly can not be changed in the field to change light direction so care must be taken to orient the fixture properly during installation. For the symmetric lens option, the fixture can be positioned in either direction.

2. Door Frame and Hardware

Some SSTR models utilize screws to secure the door frame to the housing. To prevent cross-threading of the screws, start threading each screw by hand to ensure proper threading of the screw into the nut. Once started, continue tightening the screws with a screw driver – alternating between screws until they are all tight.

When opening or closing the door frame, support the door in closed position until all fasteners are completely tightened or completely unthreaded from nut inserts.

Some door frame options are supplied with a cable lanyard to support the door in an open position. The eyelets on these cables are secured to the housing and door frame with screws and lock-nuts. If it becomes necessary to completely remove the door frame from the housing, disconnect the cable from the door frame. Follow the steps below to ensure that the cable is reconnected properly to the door frame.

- Insert the screw through the hole on the door frame. The head of the screw should be near the end of the door frame.
- Slide the eyelet over the screw orientating the eyelet.
- Tighten the locknut onto the screw making sure that it is loose enough for the eyelet to swivel freely. This is important to ensure that the cable lanyard tucks away properly when the door is closed.

When closing the door, always tuck the cable lanyard inside main compartment of the fixture by flipping the eyelet and cable toward the center of the door.

B. INSTALLATION OF GRID STYLE ("G" Versions) FIXTURES

Grid style (or "G" version) SSTR Series fixtures are designed to install into standard suspended grid ceilings with a standard 1" or 1½" high grid. The SSTR grid fixtures are sized to fit within standard 2x2 and 2x4 ceiling systems. Fixtures can be installed in any pattern necessary within the ceiling grid layout. The weight of the fixture is supported by the grid and supplemented with direct connection to the building structure. The steps for installation are as follows:

CAUTION: Electrical luminaires are designed for permanent installation in ordinary (Non-Hazardous) locations in accordance with the National Electrical Code and all applicable local codes. Do not use in areas of limited ventilation or in high ambient enclosures. The lamp and luminaire operate at high temperatures, contact with combustible materials can cause fire and personal contact can cause severe burns.

ATTENTION: Ce luminaire a été conçu pour une installation permanente dans un emplacement régulier (non dangereux) et en conformité avec le Code électrique canadien et codes locaux applicables. Ne jamais installer dans un endroit où la ventilation est limitée ou dans des boîtiers où la température ambiante est très élevée. Le lamp et le luminaire fonctionnent à des températures élevées, un contact avec des matériaux combustibles peut engendrer un incendie et un contact corporel peut causer de sévères brûlures.

Philips Lighting Company
200 Franklin Square Drive
Somerset, NJ 08873
Phone: 855-486-2216
www.philips.com/luminaires

Philips Lighting Company
281 Hillmount Road
Markham ON, Canada L6C 2S3
Phone: 800-668-9008
www.philips.com/luminaires

SAP 12NC: 443580413720
JUNE, 2013

INSTALLATION INSTRUCTIONS

SurgiCare Surgical Troffer

Series: SSTR24, SSTR22, SSTR14

CAUTION: THE INSTALLATION AND SERVICING OF THIS PRODUCT SHOULD BE PERFORMED BY A QUALIFIED ELECTRICIAN OR SERVICE PERSONNEL
ATTENTION : L'INSTALLATION ET L'ENTRETIEN DE CE PRODUIT DOIVENT ÊTRE EFFECTUÉS PAR UN ÉLECTRICIEN OU UN MEMBRE DU PERSONNEL QUALIFIÉ.

- Inspect the ceiling grid to make sure it is supported from the building structure as recommended by the ceiling grid manufacturer's instructions. This must be approved before bearing the weight of the lighting fixture.
- Angle the fixture up through the opening in the grid making sure that the door frame is facing the room. Once the fixture is positioned through the opening, it can be leveled out and lifted down until the flanges of the fixture rest on the corresponding flanges of the ceiling grid. For 2x2 fixtures being installed within a 2x4 ceiling system or for 1x4 fixtures, additional grid pieces may need to be installed. All four sides of the fixture must rest on the grid.
- The fixture is to be connected directly to the building structure, independent of the ceiling grid. Locate the hanger support tab at each corner of the fixture as shown in Figure 1. Use a hanger wire at all four support tabs to tie the fixture to the building structure. Use 12 gauge minimum hanger wire rated for such application. In addition, follow local building codes regarding required additional support of fixtures.

Retainer Clips or Earthquake Clips can be ordered as accessories with the SSTR Series fixtures for additional support with grid ceilings. When using these accessories, the fixture should still be installed per the instructions above. Specific instructions for installing and using these accessories are supplied with the packaging for the clips.

4. Follow the instructions in section "E. Making Electrical Connections". If the fixture has an emergency ballast and/or dimming ballasts, also follow the instructions in sections "F. Emergency Ballast Connections" and "H. Low Voltage Dimming Circuits".

C. INSTALLATION OF A FLANGED ("F" Version) FIXTURE

Flange style (or "F" version) SSTR Series fixtures are designed to install into dry wall (i.e. gypsum board, sheetrock) ceilings. It is important to carefully review and follow the instructions in this section to ensure a successful installation.

1. Determine the required ceiling opening.

Installation requires a clean and accurate opening to be cut into the ceiling surface for the fixture to be installed into. Openings need to be cut square and accurate to 1/16" of the provided dimensions. The cut openings should be into whole pieces of ceiling material to minimize seams and joints intersecting the cut opening. This limits the stress on taped joints and ensures a better fit of the fixture flange against the ceiling surface.

The ceiling surface should be free of bowing and the area around the ceiling opening should be finished to a smooth and flat surface free of imperfections. The elevation of the ceiling surface should not deviate more than 1/32" over 2' of horizontal surface.

Rigid framing (i.e. C-channel) around the cut opening should be installed with the inside edge of the frame positioned flush with the cut opening. The ceiling material should be secured to the bottom surface of the frame. The combined thickness of the ceiling material should be a minimum of 1-1/16" but no greater than 3-1/16". (See Figure 2)

- The ceiling opening for individual fixtures are as follows:
- To determine the required ceiling opening for a continuous row of fixtures, follow the guidelines below and review Figures 3a-3d.

1.) For 2'x4' and 1'x4' fixtures, use the 48-5/16" ceiling opening length for an individual fixture and add 49-7/16" for each additional fixture being included in the row. (Example: If the application required 3 fixtures in the row, the ceiling opening would be 22-7/8" wide by 147-3/16" long. The length is determined by adding 48-5/16" + 49-7/16"

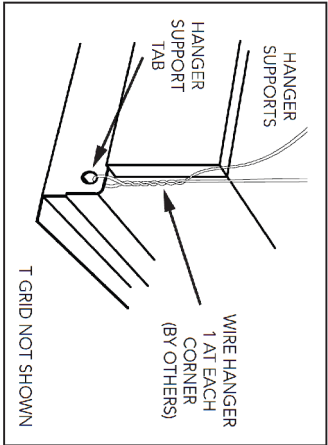


Figure 1

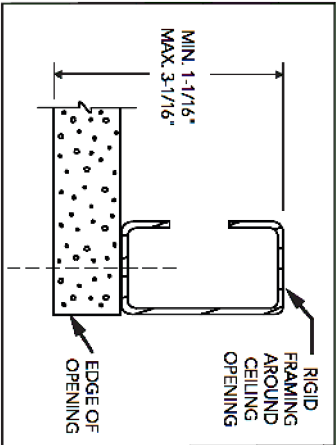


Figure 2

Model	Nominal Fixture Size	Required Ceiling Opening
SSTRF24	2' x 4'	22-7/8" x 48-5/16"
SSTRF22	2' x 2'	22-7/8" x 24-5/16" **
SSTRF14	1' x 4'	10-7/8" x 48-5/16"

** The 24-5/16" dimension represents the length of the opening running parallel to the side flange of the surgical fixture.

CAUTION: Electrical luminaires are designed for permanent installation in ordinary (Non-Hazardous) locations in accordance with the National Electrical Code and all applicable local codes. Do not use in areas of limited ventilation or in high ambient enclosures. The lamp and luminaire operate at high temperatures, contact with combustible materials can cause fire and personal contact can cause severe burns.

ATTENTION: Ce luminaire a été conçu pour une installation permanente dans un emplacement régulier (non dangereux) et en conformité avec le Code électrique canadien et codes locaux applicables. Ne jamais installer dans un endroit où la ventilation est limitée ou dans des boîtiers où la température ambiante est très élevée. Le lamp et le luminaire fonctionnent à des températures élevées, un contact avec des matériaux combustibles peut engendrer un incendie et un contact corporel peut causer de sévères brûlures.

Philips Lighting Company
200 Franklin Square Drive
Somerset, NJ 08873
Phone: 855-486-2216
www.philips.com/luminaires

Philips Lighting Company
281 Hillmount Road
Markham ON, Canada L6C 2S3
Phone: 800-668-9008
www.philips.com/luminaires

SAP 12NC: 443580413720
JUNE, 2013

INSTALLATION INSTRUCTIONS

SurgiCare Surgical Troffer

Series: SSTR24, SSTR22, SSTR14

CAUTION: THE INSTALLATION AND SERVICING OF THIS PRODUCT SHOULD BE PERFORMED BY A QUALIFIED ELECTRICIAN OR SERVICE PERSONNEL

ATTENTION : L'INSTALLATION ET L'ENTRETIEN DE CE PRODUIT DOIVENT ÊTRE EFFECTUÉS PAR UN ELECTRICIEN OU UN MEMBRE DU PERSONNEL QUALIFIÉ.

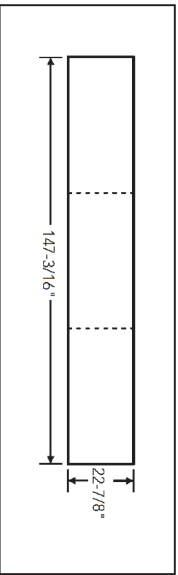


Figure 3a

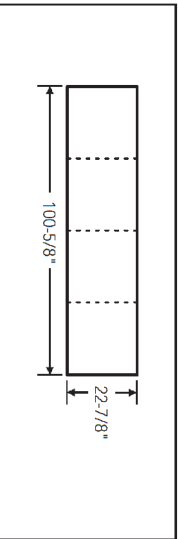


Figure 3b

- ii.) For 2'x2' fixtures, use the 24-5/16" ceiling opening length for an individual fixture and add 25-7/16" for each additional fixture being included in the row. (Example: If the application required 4 fixtures in the row, the ceiling opening would be 22-7/8" wide by 100-5/8" long. The length is determined by adding 24-5/16" + 25-7/16" + 25-7/16" + 25-7/16". (See Figure 3b)

- iii.) A rectangular pattern is a common layout pattern. Four continuous rows are used to create this pattern. It is critical to leave a minimum of a 2-1/2" space where the end of one row meets the side of another row. This holds true even when the fixtures meet at corners. Review Figures 3c and 3d to see this condition illustrated.

2. If the installation involves a continuous row of fixtures, follow the guidelines below. If it is a single flanged fixture, skip this step and move to Step 3 below. Once the ceiling opening has been cut and the blocking has been put in place around the opening, it is time to install the ceiling brackets. One ceiling bracket is included with each fixture. Position the ceiling brackets and secure them in place as shown in Figures 4a, 4b, 4c, 4d and 4e. It is important that the bottom of the bracket is at the same elevation with the face of the ceiling. When in place, the appropriate number of ceiling openings should be framed out. Each opening within the row should be equal in size when the ceiling brackets are in position.

3. Check to make sure the sway bracket wings, mounted on the outside walls of the fixture, are resting against the side of the fixture. Carefully lift the fixture resting it on a support surface just below the ceiling.

4. Follow the instructions in section "E. Making Electrical Connections" before beginning Step 6 below. If the fixture has an emergency ballast and/or dimming ballasts, also follow the instructions in sections "F. Emergency Ballast Connections" and "H. Low Voltage Dimming Circuits".

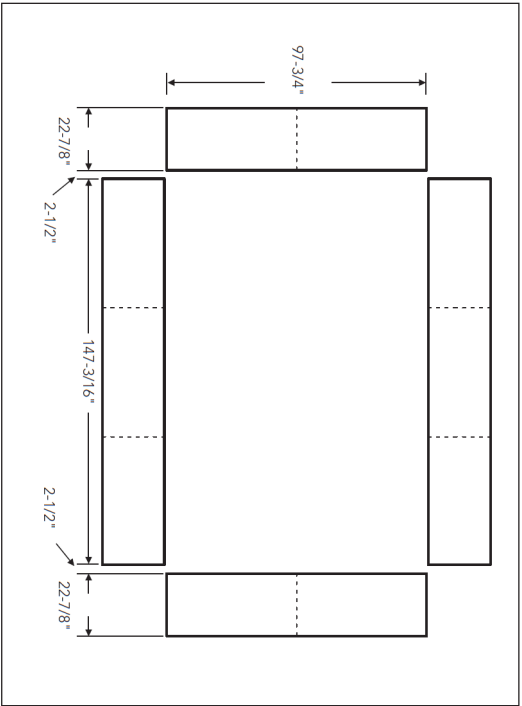


Figure 3d

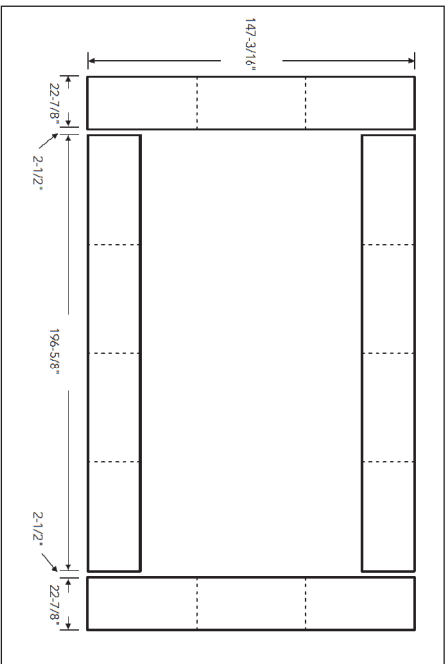


Figure 3e

CAUTION: Electrical luminaires are designed for permanent installation in ordinary (Non-Hazardous) locations in accordance with the National Electrical Code and all applicable local codes. Do not use in areas of limited ventilation or in high ambient enclosures. The lamp and luminaire operate at high temperatures, contact with combustible materials can cause fire and personal contact can cause severe burns.

ATTENTION: Ce luminaire a été conçu pour une installation permanente dans un emplacement régulier (non dangereux) et en conformité avec le Code électrique canadien et codes locaux applicables. Ne jamais installer dans un endroit où la ventilation est limitée ou dans des boîtiers où la température ambiante est très élevée. La lampe et le luminaire fonctionnent à des températures élevées, un contact avec des matériaux combustibles peut engendrer un incendie et un contact corporel peut causer de sévères brûlures.

PHILIPS

Philips Lighting Company
200 Franklin Square Drive
Somerset, NJ 08873
Phone: 855-486-2216
www.philips.com/luminaires

Philips Lighting Company
281 Hillmount Road
Markham ON, Canada L6C 2S3
Phone: 800-668-9008
www.philips.com/luminaires

SAP 12NC: 443580413720

INSTALLATION INSTRUCTIONS

SurgiCare Surgical Troffer

Series: SSTR24, SSTR22, SSTR14

CAUTION: THE INSTALLATION AND SERVICING OF THIS PRODUCT SHOULD BE PERFORMED BY A QUALIFIED ELECTRICIAN OR SERVICE PERSONNEL

ATTENTION : L'INSTALLATION ET L'ENTRETIEN DE CE PRODUIT DOIVENT ÊTRE EFFECTUÉS PAR UN ELECTRICIEN OU UN MEMBRE DU PERSONNEL QUALIFIÉ.

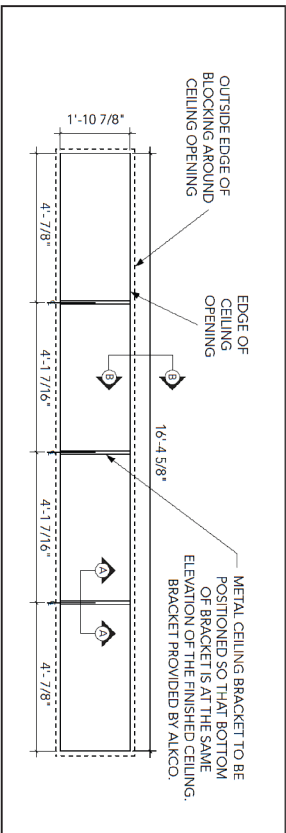


Figure 4a

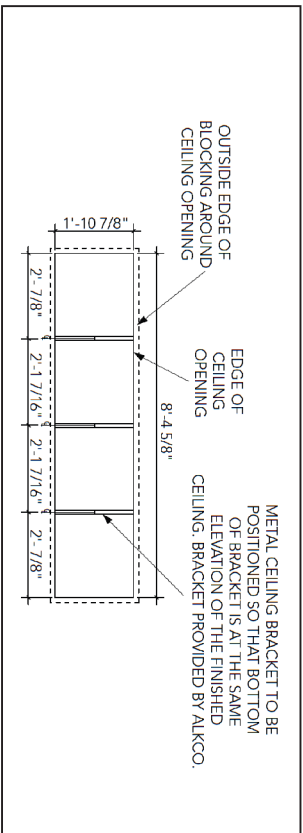


Figure 4b

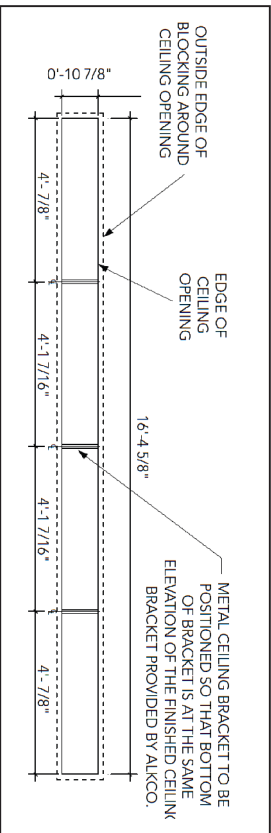


Figure 4c

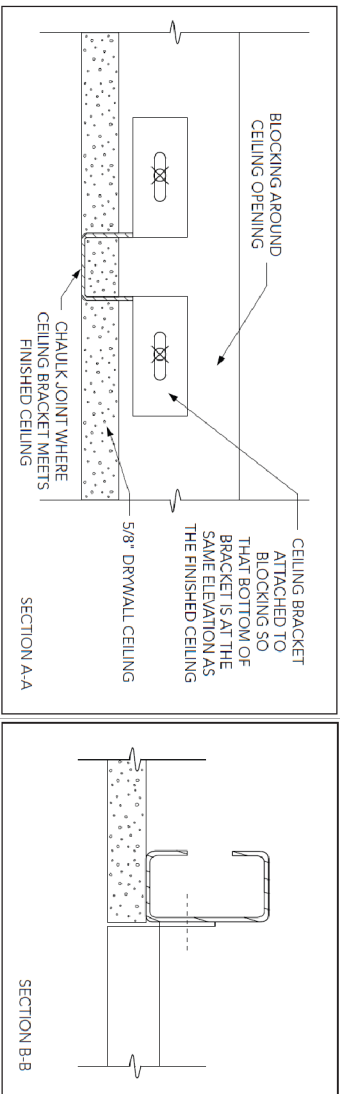


Figure 4d

CAUTION: Electrical luminaires are designed for permanent installation in ordinary (Non-Hazardous) locations in accordance with the National Electrical Code and all applicable local codes. Do not use in areas of limited ventilation or in high ambient enclosures. The lamp and luminaire operate at high temperatures, contact with combustible materials can cause fire and personal contact can cause severe burns.

ATTENTION: Ce luminaire a été conçu pour une installation permanente dans un emplacement régulier (non dangereux) et en conformité avec le Code électrique canadien et codes locaux applicables. Ne jamais installer dans un endroit où la ventilation est limitée ou dans des boîtiers où la température ambiante est très élevée. La lampe et le luminaire fonctionnent à des températures élevées, un contact avec des matériaux combustibles peut engendrer un incendie et un contact corporel peut causer de sévères brûlures.

PHILIPS

Philips Lighting Company
200 Franklin Square Drive
Somerset, NJ 08873
Phone: 855-486-2216
www.philips.com/luminaires

Philips Lighting Company
281 Hillmount Road
Markham ON, Canada L6C 2S3
Phone: 800-668-9008
www.philips.com/luminaires

SAP 12NC: 443580413720

INSTALLATION INSTRUCTIONS

Surgicare Surgical Troffer

Series: SSTR24, SSTR22, SSTR14

- Once the conduit is connected to the fixture, you can lift the fixture through the ceiling opening. The door of the fixture will need to be opened to gain access to the sway bracket adjustment screws. Turn these screws in a clockwise direction to swing the wing of the sway bracket out from the fixture as shown in Figure 5. When this has been done at all four of the sway brackets the fixture can support itself on the framing around the opening.
- Continue turning the sway bracket adjustment screws clockwise, alternating between locations, until the fixture fits snug against the ceiling.
- If the fixture has an emergency ballast and/or dimming ballasts, follow the instructions in sections "F. Emergency Ballast Connections" and "H. Low Voltage Dimming Circuits".

E. MAKING ELECTRICAL CONNECTIONS

- Note: The circuit should be shut-off at the breaker before beginning this step. Fasten each flexible wire conduit to one of four 7/8" dia. plugged holes located in the center back of the fixture. This fixture has an IP65 rating and is UL Listed for wet locations. Use water tight connectors for all electrical connections to the fixture. The fixture door needs to be open to gain access to the plugged holes from the inside of the housing. Remove the center ballast cover. [1x4 fixtures have (4) sheet metal screws holding the ballast cover in place. 2x4 and 2x2 fixtures have (2) nuts.]
- Connect fixture HOT, NEUTRAL, and GROUND conductors to the matching building conductors.



WARNING: GRAY AND VIOLET FIXTURE WIRES ARE RESERVED FOR LOW VOLTAGE DIMMING CONTROLS ONLY –DO NOT CONNECT LINE VOLTAGES TO THESE CLASS-2 LEADS. DO NOT RUN LINE VOLTAGE WIRES AND CLASS-2 CONTROL LEADS TOGETHER IN THE SAME CONDUIT.

Note: For multiple circuit installations, EMI suppressors have been provided for each circuit. The number of circuits must be specified at the time of order because it may not be changeable during installation.

The entire fixture should be on the same phase circuit when connecting multiple circuits in a fixture. This includes emergency ballasts. The emergency ballast must have its HOT lead connected to unswitched power for proper operation. The emergency ballast NEUTRAL is shared with the other ballast on the same power tray. See instructions from emergency ballast manufacturer for further details.

- The fixture is now ready to have the remainder of the installation steps completed. Return to the appropriate section.

F. EMERGENCY BALLAST CONNECTION

WARNING: TO PREVENT HIGH VOLTAGE FROM BEING PRESENT ON OUTPUT LEADS PRIOR TO INSTALLATION, INVERTER BATTERY CONNECTOR MUST BE OPEN. DO NOT JOIN INVERTER BATTERY CONNECTOR UNTIL INSTALLATION IS COMPLETE AND AC POWER IS SUPPLIED TO THE EMERGENCY BALLAST. DISCONNECT FOR MAINTENANCE.



Note: Make sure that the necessary branch circuit wiring is available. An unswitched source of power is required. The emergency ballast must be fed from the same branch circuit as the AC ballast.

- The emergency ballast has an inverter battery connector which is disconnected for shipment. It must be reconnected only after installation of fixture and AC power is supplied. To access the battery connector, remove the ballast cover with the charging indicator and test switch mounted behind it. The 1x4 fixture center cover can be removed as indicated above. The 2x2 and 2x4 fixtures must have the center cover removed as described above and a side ballast cover removed also. Remove (4) screws on the side ballast cover and find the battery connector leads on the emergency ballast (the red and white wires with mating connectors) and snap them together. Reassemble the covers.

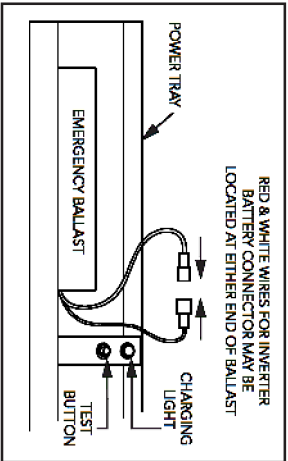


Figure 6

CAUTION: THE INSTALLATION AND SERVICING OF THIS PRODUCT SHOULD BE PERFORMED BY A QUALIFIED ELECTRICIAN OR SERVICE PERSONNEL
ATTENTION : L'INSTALLATION ET L'ENTRETIEN DE CE PRODUIT DOIVENT ÊTRE EFFECTUÉES PAR UN ÉLECTRICIEN OU UN MEMBRE DU PERSONNEL QUALIFIÉ.

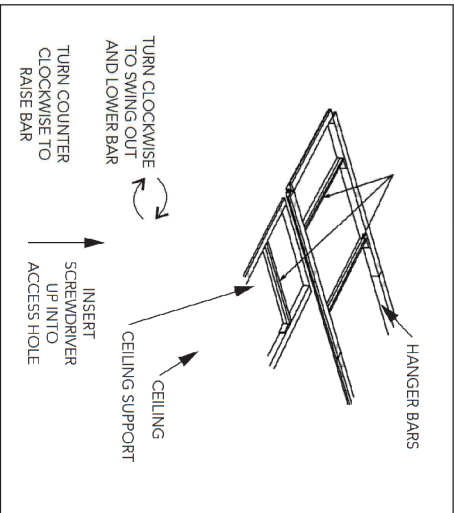


Figure 5

INSTALLATION INSTRUCTIONS

Surgicare Surgical Troffer

Series: SSTR24, SSTR22, SSTR14

- Lamp Removal: Start with one of the outside lamps and remove one lamp at a time. Twist lamps ¼-turn and slide out of sockets. Insert one end of lamp into the lamp chamber holes at end of housing near the corner (See Figure 8). Angle the opposite end (free end) of the lamp so it is diagonal across the fixture. Slide contact pins, of the free end, out of fixture through slot at fixture opening in corner as shown in Figure 7. Lamp is now freely removed.
- Lamp Installation: Start with one of the outside lamps and install one lamp at a time. The last lamp to install should be the other outside lamp (install middle lamp as the second lamp). Insert one end of lamp into the lamp chamber at end of housing near the corner (See Figure 8). Angle the opposite end (free end) of the lamp so it is diagonal across the fixture as shown in Figure 7. Slide contact pins, of free end, into fixture through slot at fixture opening in corner (See Figure 7). Slide lamp pins into sockets and twist lamps ¼-turn to lock in place.

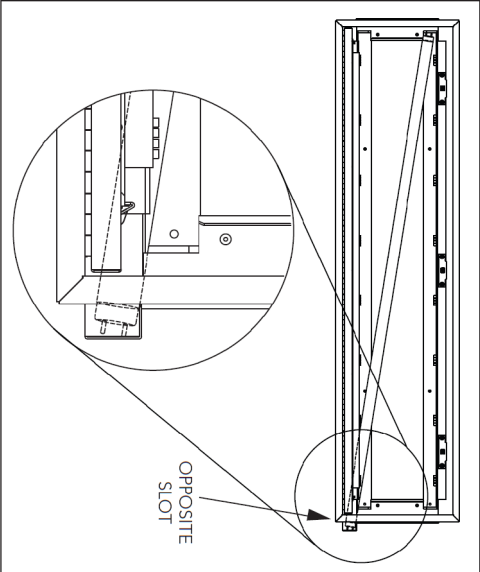


Figure 7

H. LOW VOLTAGE DIMMING CIRCUITS

The SSTR fixtures can be ordered with dimming ballasts for variable control of light levels. The control wires from the dimming ballast should only be connected to low voltage control devices (0-10v DC).

- To wire fixtures to dimming controls, use the access points located at the center of the fixture as described in Section C, step 4 or Section D, step 4.
- Connect the VIOLET and GRAY fixture wires to incoming low voltage control leads of the same color. Do not cross wire the VIOLET and GRAY wires. It is recommended that these Class-2 wires be run in grounded conduit to reduce problems with electrical noise. See instructions from dimming ballast and control manufacturer for further details.



WARNING: GRAY AND VIOLET FIXTURE WIRES ARE RESERVED FOR LOW VOLTAGE DIMMING CONTROLS ONLY – DO NOT CONNECT LINE VOLTAGES TO THESE CLASS-2 LEADS. DO NOT RUN LINE VOLTAGE WIRES AND CLASS-2 CONTROL LEADS TOGETHER IN THE SAME CONDUIT.

I. CLEANING

Fixtures can be wiped down with a soft cloth lightly dampened with warm and mild soapy water. Do not use ammonia based or abrasive cleaners. Do not use steel wool or steel brushes on stainless steel housings. Wipe stainless steel in direction of grain.

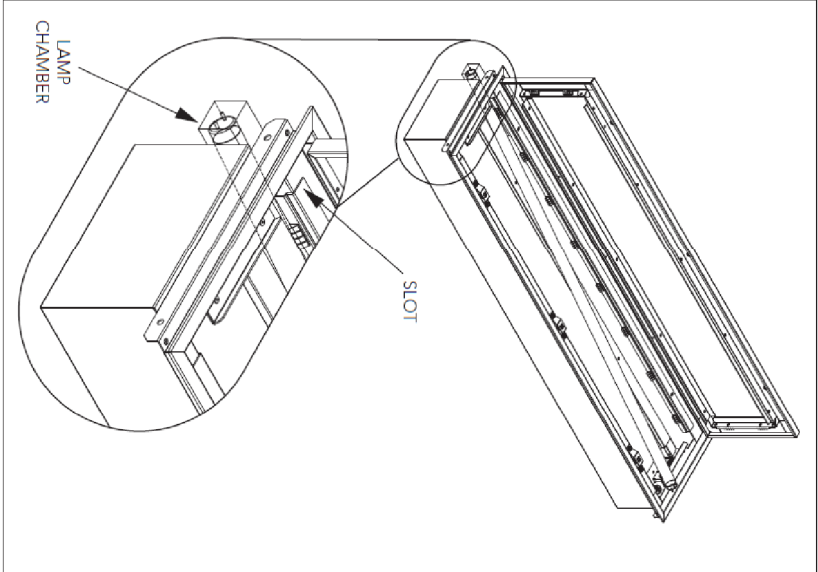


Figure 8

CAUTION: THE INSTALLATION AND SERVICING OF THIS PRODUCT SHOULD BE PERFORMED BY A QUALIFIED ELECTRICIAN OR SERVICE PERSONNEL
ATTENTION : L'INSTALLATION ET L'ENTRETIEN DE CE PRODUIT DOIVENT ÊTRE EFFECTUÉES PAR UN ÉLECTRICIEN OU UN MEMBRE DU PERSONNEL QUALIFIÉ.

CAUTION: Electrical luminaires are designed for permanent installation in ordinary (Non-Hazardous) locations in accordance with the National Electrical Code and all applicable local codes. Do not use in areas of limited ventilation or in high ambient enclosures. The lamp and luminaire operate at high temperatures, contact with combustible materials can cause fire and personal contact can cause severe burns.

ATTENTION: Ce luminaire a été conçu pour une installation permanente dans un emplacement régulier (non dangereux) et en conformité avec le Code électrique canadien et codes locaux applicables. Ne jamais installer dans un endroit où la ventilation est limitée ou dans des boîtiers où la température ambiante est très élevée. La lampe et le luminaire fonctionnent à des températures élevées, un contact avec des matériaux combustibles peut engendrer un incendie et un contact corporel peut causer de sévères brûlures.

PHILIPS
Philips Lighting Company
200 Franklin Square Drive
Somerset, NJ 08873
Phone: 855-486-2216
www.philips.com/luminaires

Philips Lighting Company
281 Hillmount Road
Markham ON, Canada L6C 2S3
Phone: 800-668-9008
www.philips.com/luminaires

SAP 12NC: 443580413720

PAGE 5 OF 7

PHILIPS
Philips Lighting Company
200 Franklin Square Drive
Somerset, NJ 08873
Phone: 855-486-2216
www.philips.com/luminaires

Philips Lighting Company
281 Hillmount Road
Markham ON, Canada L6C 2S3
Phone: 800-668-9008
www.philips.com/luminaires

SAP 12NC: 443580413720

PAGE 6 OF 7

INSTALLATION INSTRUCTIONS

SurgiCare Surgical Troffer Series: SSTR24, SSTR22, SSTR14

CAUTION: THE INSTALLATION AND SERVICING OF THIS PRODUCT SHOULD BE PERFORMED BY A QUALIFIED ELECTRICIAN OR SERVICE PERSONNEL
ATTENTION : L'INSTALLATION ET L'ENTRETIEN DE CE PRODUIT DOIVENT ÊTRE EFFECTUÉS PAR UN ÉLECTRICIEN OU UN MEMBRE DU PERSONNEL QUALIFIÉ.

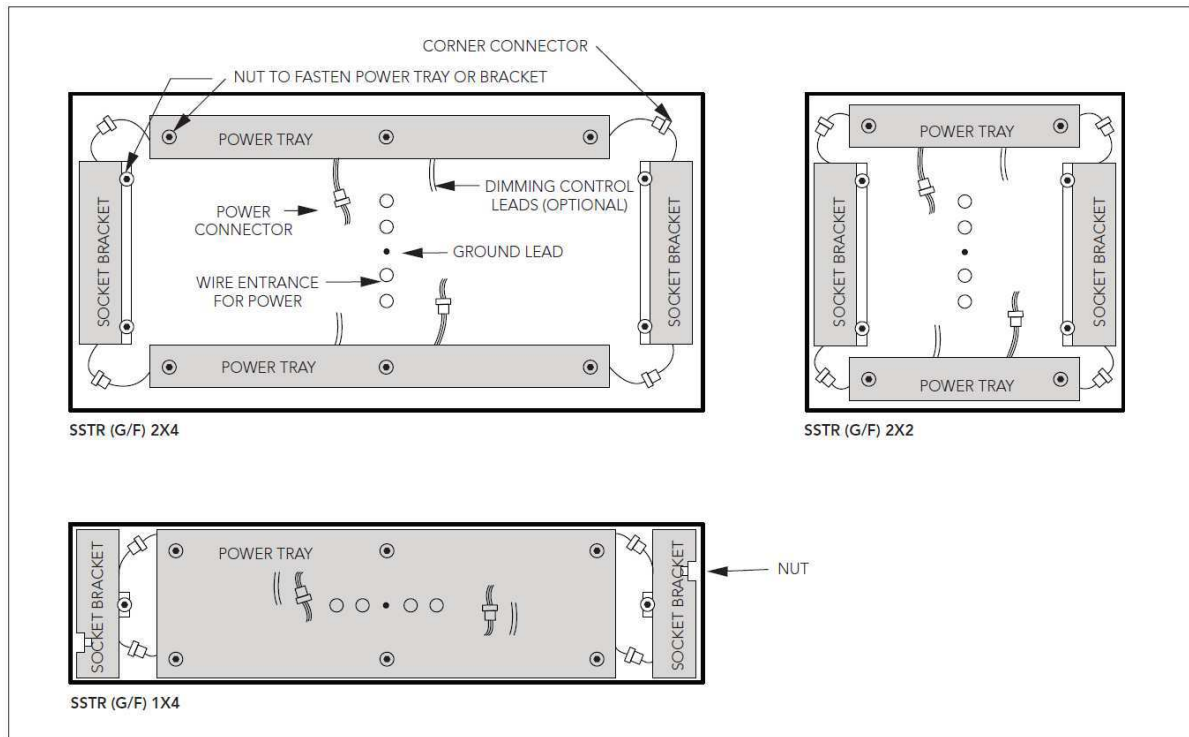


Figure 9

J. MAINTENANCE

WARNING: The SSTR series has been designed to reduce conducted and radiated EMI. Changes to the housing or electrical system may lead to unknown EMI problems. **DO NOT SUBSTITUTE COMPONENTS OR REWIRE WITHOUT CONSULTING FACTORY. DO NOT ALTER HOUSING OR CREATE EXTRA HOLES FOR WIRE ENTRY.**



The SSTR series has been designed to reduce maintenance time in a time critical room. If a power tray needs attention, it may be removed from the fixture and worked on in a different location. A replacement power tray may be reinstalled in its place and the fixture reclosed to quickly return the room to operating condition. A replacement must match the wiring exactly. Refer to labels on power trays to identify. There is a number which begins with 093-... that must be matched. To remove a power tray, first disconnect all power connectors and any dimming control connections at center of fixture. Then disconnect the corner connectors. Next, remove the nuts fastening the power tray to the housing. (See Figure 15) If necessary, remove nuts fastening socket brackets to the housing. To reinstall, fasten tray or brackets back into fixture over mounting studs with original nuts, then reconnect the corner connectors and lastly remake the connections at the center of the fixture.

CAUTION: Electrical luminaires are designed for permanent installation in ordinary (Non-Hazardous) locations in accordance with the National Electrical Code and all applicable local codes. Do not use in areas of limited ventilation or in high ambient enclosures. The lamp and luminaire operate at high temperatures, contact with combustible materials can cause fire and personal contact can cause severe burns.

ATTENTION: Ce luminaire a été conçu pour une installation permanente dans un emplacement régulier (non dangereux) et en conformité avec le Code électrique canadien et codes locaux applicables. Ne jamais installer dans un endroit où la ventilation est limitée ou dans des boîtiers où la température ambiante est très élevée. La lampe et le luminaire fonctionnent à des températures élevées, un contact avec des matériaux combustibles peut engendrer un incendie et un contact corporel peut causer de sévères brûlures.

PHILIPS

Philips Lighting Company
200 Franklin Square Drive
Somerset, NJ 08873
Phone: 855-486-2216
www.philips.com/luminaires

Philips Lighting Company
281 Hillmount Road
Markham ON, Canada L6C 2S3
Phone: 800-668-9008
www.philips.com/luminaires

443580069840 JUNE, 2013
SAP 12NC: 443580413720