

Recessed

SofTrace LED 1x4

with tunable white
technology
3200/4000/4400 lm



Project: _____
Location: _____
Cat.No: _____
Type: _____
Lamps: _____ Qty: _____
Notes: _____

Day-Brite / CFI SofTrace LED recessed architectural provides excellent visual comfort. Its modern architectural styling complements any space. Tunable white light allows color temperature flexibility between 2700K and 6500K CCT.

Ordering guide

Example: 1STG32L8TW-4-D-UNV-DTW

Width	Family	Ceiling Type	Lumen Package ¹	Color Temp.	Length	Center Diffuser	Voltage	Driver	Options
1	ST			8TW —	4 —	D —	UNV —	DTW —	
1 1'	ST Softrace	G Grid F Flange Z Z Spline / Modular	32L 3200 nominal delivered lumens 40L 4000 nominal delivered lumens 44L 4400 nominal delivered lumens	8TW 80 CRI, 2700K thru 6500K white light tuning	4 4'	D Diffuse	UNV Universal voltage 120-277V	DTW Dual channel tunable white	EMLED Integral emergency, 100lm nominal, 6500K color circuit only F1/D 3/8" twin flex, 3 wire 18 gauge 6' for dimmable luminaires F2/7W 3/8" single flex, 7 wire 18 gauge 6' for dimmable luminaires GLR Fusing, fast blow

Footnotes:

¹ The lumen values stated above are relevant only to the "D" center diffuser option. For lumen values with the other diffusers, check the photometrics tests online for those specific catalog numbers.

Accessories (order separately)

- **FMA14** 1'x4' "F" mounting frame for NEMA "F" mounting
- **GCC** Grid clip pack (set of 4)

1ST SofTrace LED recessed 1x4

with tunable white technology, 3200/4000/4400 lumens

Application

- Subtle enclosure curves provide architectural styling to complement any space.
- Smooth brightness across the face of the luminaire prevents glare and provides excellent visual comfort.
- Directs a controlled amount of light to higher angles to eliminate "cave effect" without creating glare.
- Ideal for modern offices, schools and retail environments.
- Excellent luminaire efficacy provides significant energy savings.
- Lumen packages range from 3,200 to 4,400 initial lumens, providing flexibility to optimize light levels for a specific application.
- High CRI source provides excellent color rendering.
- Grid, Flange or Z-spline/ Modular models available.

Construction/Finish

- T-bar grid clips are not integral to the luminaire and must be ordered separately.
- Suitable for end-to-end mounting.
- K.O. in luminaire ends for thru wiring or conduit entry in shallow plenums.

Electrical

- Must order compatible Philips Lighting control system.
- Driver and LED boards are easily accessible from below. LED boards are individually replaceable if required.
- Five-year luminaire warranty including LED boards and driver.
- High efficiency LEDs have 60,000 hour L70 rated life (defined as 70% lumen maintenance.)
- cETLus listed to UL Standards, suitable for damp locations.

Enclosure

- Choice of three enclosures:
 - Single piece thermo formed acrylic lens with ribbed center diffuser (D)
 - Three piece acrylic lens with round perforated steel center diffuser (PMW)

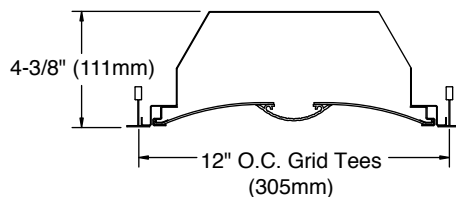
General Notes

- All options factory installed.
- All accessories are field installed.
- Many luminaire components, such as reflectors, refractors, lenses, sockets, lampholders, and LEDs are made from various types of plastics which can be adversely affected by airborne contaminants. If sulfur based chemicals, petroleum based products, cleaning solutions, or other contaminants are expected in the intended area of use, consult factory for compatibility.

Controls

- Luminaires are not sold individually and are only compatible with load controllers, sensors, user interfaces and front end software from Philips. Philips controls platform allows for more flexibility with customized lighting scenes and behaviors as well as scalability of the tunable white solution into a more extensive lighting network management system. To learn more about the Philips controls solution please visit our tunable white page or <http://www.lightingproducts.philips.com/our-brands/philips-controls/dynalite.html>

Dimensions

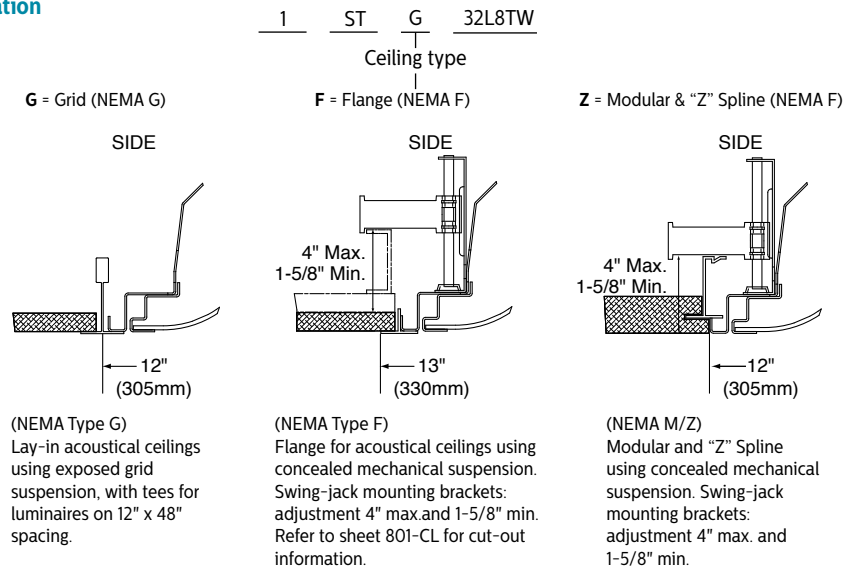


*EMLED option is 5-5/8" (143mm) deep

1ST SofTrace LED recessed 1x4

with tunable white technology, 3200/4000/4400 lumens

Ceiling configuration



Electrical Specifications

Input Voltage	120V			277V		
Nominal CCT	2700K			2700K		
Nominal Lumens	3200lm	4000lm	4400lm	3200lm	4000lm	4400lm
Commissioned State						
Power (W)	36.5	44.3	50.0	36.3	44.0	49.5
Current (A)	0.31	0.38	0.42	0.16	0.18	0.2
Power Factor	0.98	0.99	0.99	0.85	0.88	0.90
THD (%)	15	14	12	18	17	16
Off State Power (W)	0.6	0.6	0.6	0.9	0.9	0.9
Non-Commissioned State						
Power (W)	67.0	83.0	92.0	66.0	82.0	91.0
Current (A)	0.56	0.70	0.78	0.26	0.32	0.35

Photometry

1x4 SofTrace LED recessed with tunable white, 3200 nominal delivered lumens, diffuse, 2700K CCT

LER – 90

Catalog No.		1STG32L8TW-4-D-UNV-DTW			
Test No.		36292			
S/MH		1.2			
Lamp Type		LED			
Lumens/Lamp		3199			
Input Watts		36			
CCT		2700K			
Comparative yearly lighting energy cost per 1000 lumens – \$2.67 based on 3000 hrs. and \$.08 pwr KWH.					
The photometric results were obtained in the Day-Brite laboratory which is NVLAP accredited by the National Institute of Standards and Technology.					
Photometric values based on test performed in compliance with LM-79.					

Candlepower				
Angle	End	45	Cross	
0	1349	1349	1349	
5	1330	1342	1348	
15	1269	1284	1289	
25	1148	1158	1147	
35	976	966	925	
45	774	740	683	
55	561	514	468	
65	357	330	295	
75	175	168	145	
85	39	38	36	

Light Distribution				Average Luminance			
Degrees	Lumens	% Luminaire		Angle	End	45'	Cross
0-30	1019	31.9		45	3753	3586	3308
0-40	1618	50.6		55	3354	3072	2798
0-60	2645	82.7		65	2898	2675	2391
0-90	3192	99.8		75	2320	2218	1917
0-180	3199	100.0		85	1534	1510	1424

Coefficients of Utilization							
EFFECTIVE FLOOR CAVITY REFLECTANCE 20 PER (pfc=0.20)							
pcc	80			70			50
pw	70	50	30	70	50	30	50 30
RCR							
0	118	118	118	115	115	115	111 111
1	109	105	101	107	103	98	97 94
2	100	92	85	97	90	84	86 81
3	92	81	73	89	80	72	77 70
4	83	72	65	81	71	64	68 61
5	78	66	56	76	64	56	61 55
6	71	58	51	69	57	50	56 48
7	67	54	46	65	53	45	52 44
8	63	50	40	60	48	40	46 40
9	58	46	38	56	45	36	44 36
10	55	41	34	54	41	34	40 34

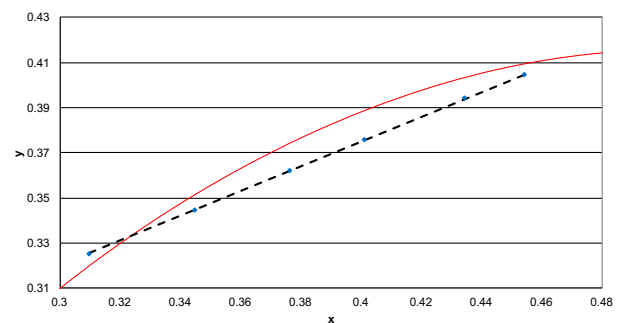
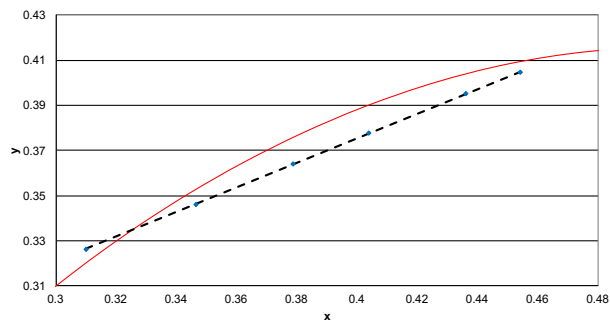
1ST SofTrace LED recessed 1x4

with tunable white technology, 3200/4000/4400 lumens

Color information

1x4 SofTrace 3200lm	2700K	3000K	3500K	4000K	5000K	6500K
Flux	3232	3258	3237	3279	3172	3137
Power	36.0	37.5	35.4	34.5	32.5	29.7
Efficacy	89.8	86.9	91.3	95.1	97.6	105.6
CCT	2735	2941	3423	3950	4928	6678
CRI	83	84	86	87	86	82
R9	18	23	32	35	33	12
x	0.4542	0.4360	0.4037	0.3786	0.3464	0.3100
y	0.4048	0.3950	0.3775	0.3639	0.3462	0.3263
Duv	-0.0017	-0.0035	-0.0055	-0.0056	-0.0033	0.0032

1x4 SofTrace 4000lm	2700K	3000K	3500K	4000K	5000K	6500K
Flux	3860	3936	3976	4073	3990	3985
Power	43.7	45.2	42.7	42.2	40.3	38.0
Efficacy	88.2	87.1	93.1	96.6	99.1	104.7
CCT	2737	2959	3468	4013	4994	6710
CRI	83	84	86	87	86	82
R9	17	23	32	36	32	13
x	0.4540	0.4344	0.4011	0.3760	0.3446	0.3096
y	0.4045	0.3940	0.3759	0.3621	0.3448	0.3253
Duv	-0.0017	-0.0037	-0.0057	-0.0057	-0.0033	0.0029



1x4 SofTrace 4400lm	2700K	3000K	3500K	4000K	5000K	6500K
Flux	4286	4364	4385	4475	4353	4300
Power	49.2	50.3	47.1	46.2	43.7	41.3
Efficacy	87.0	86.8	93.1	96.9	99.6	104.2
CCT	2738	2955	3450	3985	4960	6723
CRI	83	84	86	87	86	82
R9	17	23	31	35	33	13
x	0.4538	0.4346	0.4020	0.3771	0.3455	0.3094
y	0.4044	0.3940	0.3763	0.3625	0.3450	0.3249
Duv	-0.0018	-0.0037	-0.0058	-0.0058	-0.0035	0.0028

