

CitySpirit Street / 庭院灯

BDS480/BDS482

Mounting instruction/安装说明

4441 0009 8491 c



IEC
60598

GB
7000




IP65



IK09

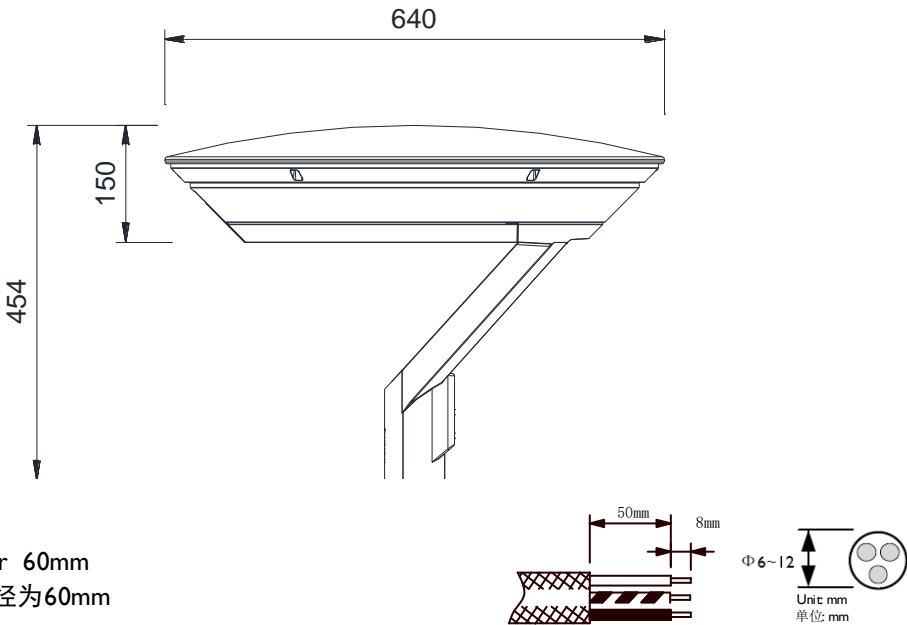
ta
35°

S.C.x
0.32m²

Type (For China only) 产品型号 (仅限中国大陆地区)	Type 产品型号	Power 功率	Control Method 控制方式	Color Ring 色环	Voltage 输入电压	CCT/Color 色温/颜色	Frequency 频率	 kg	Application Temperature 使用环境温度
BDS480 48LED I I7	BDS480 LED37/NW PSU 220-240V DW2 MPI BDS480 LED35/WW PSU 220-240V DW2 MPI	38W	on/off 开/关	W/O 无	220-240V	3000/4000K	50/60Hz	13.7	-40 ~ 35℃
BDS480 96LED I I7	BDS480 LED76/NW PSU 220-240V DW2 MPI BDS480 LED70/WW PSU 220-240V DW2 MPI	75W							
BDS480 48LED I I7 DIM	BDS480 LED35/WW PSD 220-240V DW2 MPI BDS480 LED37/NW PSD 220-240V DW2 MPI	38W	Dimming * 调光*						
BDS480 96LED I I7 DIM	BDS480 LED76/NW PSD 220-240V DW2 MPI BDS480 LED70/WW PSD 220-240V DW2 MPI	75W							
BDS482 48LED I I7	BDS482 LED37/NW 220-240V GRN BDS482 LED37/NW 220-240V BL BDS482 LED37/NW 220-240V RD BDS482 LED35/WW 220-240V GRN BDS482 LED35/WW 220-240V BL BDS482 LED35/WW 220-240V RD	46W	on/off 开/关	Red Green Blue 红 绿 蓝					

*: Dimming by program in IC inside power supply.

*: 通过电源的控制芯片中内置程序进行调光。



*Pole diameter 60mm
*安装灯杆直径为60mm

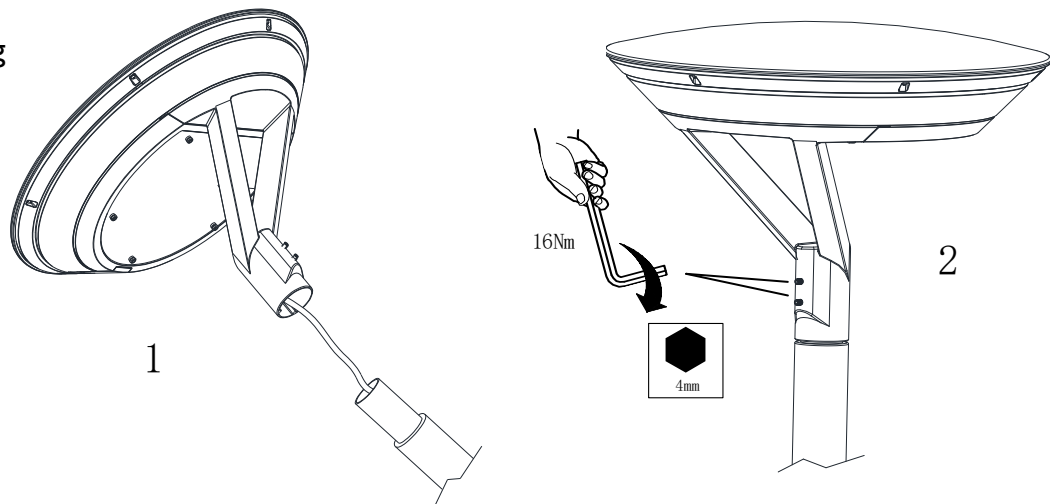
Philips Lighting (China) Investment Co., Ltd.
No. 9, Lane 888 Tianlin Rd, Shanghai, China
Postcode: 200233

飞利浦照明(中国)投资有限公司
中国上海市田林路888弄9号楼
邮编: 200233

PHILIPS

1

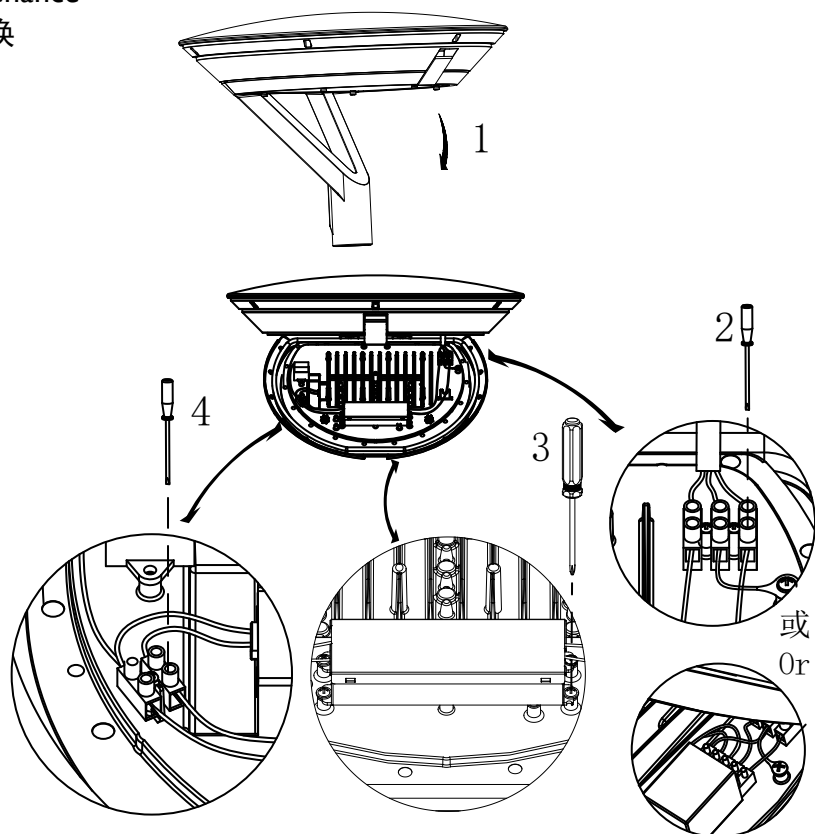
灯杆安装 Pole Mounting



1. 灯具接入灯杆上端，与灯具连接出灯杆直径为60mm；
Put luminaire on the top of pole and diameter of pole is 60mm at junction;
2. 用4mm内六角螺丝扳手拧紧两只螺丝，扭矩为16Nm；
Use hexagon socket screw key to tighten two screws, torque is 16 N.m.

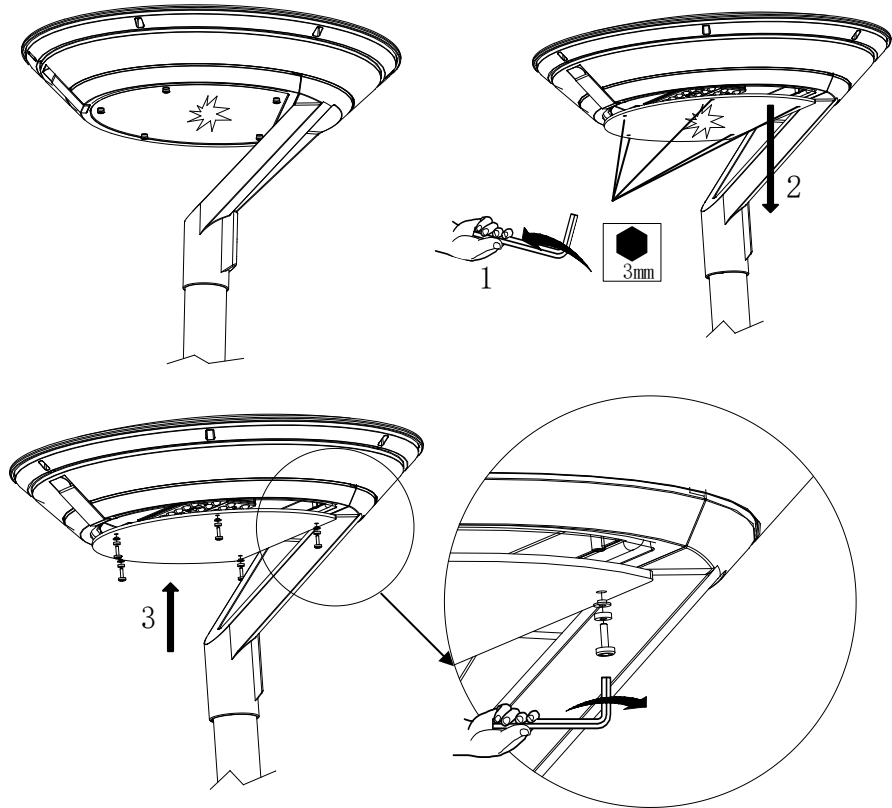
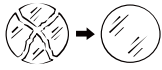
2

Driver Maintenance 电源更换



1. 打开搭扣；
Open clip;
2. 拧松电源输入端的固定螺丝；
loosen screws at input end of power supply;
3. 拧松电源两端的螺丝；
loosen screws at two ends of power supply;
4. 拧松电源输出端的固定螺丝；
loosen screws at output end of power supply;
5. 取下损坏的电源，换上好的电源，把电源两端的线材插入相应连接件端口，再按上述步骤拧紧相应的螺丝。
Replace damaged power supply with good power supply, insert cables of two ends into relevant ports of connectors, then tighten screws above mentioned.

玻璃更换 Glass Maintenance



1.玻璃更换只针对非色环版本，色环版本运回原厂进行更换；

Glass maintenance is only for non-color ring version, color ring version should be maintained in factory;

2.用3mm内六角螺丝扳手拧松固定玻璃的5颗固定螺丝；

Use hexagon socket screw key to loosen fives screws to fix glass;

3.取下损坏的玻璃；

Take off damaged glass;

4.更换好的玻璃,注意加上塑胶垫片和密封圈,并拧紧螺丝。

Replace good glass with damaged glass, don't forget plastics washer and sealing ring, then tighten screws.



NOTES:

1.The luminaire should be installed by a qualified electrician and wired in accordance with the latest IEE electrical regulations or the national requirements.

灯具应由有资格的电工安装，接线要符合IEE电气标准或国家标准。

2.Do not switch on before complete installation.

接线过程中切勿通电。

3.Don't hot swap. Don't operate when power on; Don't touch the lamp or the heating part, etc.

不能热插拔，带电操作；请勿触摸光源或发热部位等。

4.1.First switch off main supply and then replace broken glass.

先切断电源，再更换破碎玻璃。

5.2.First switch off main supply and then replace damaged power supply.

先切断电源，再更换损坏的电源。

6.Non-replaceable LED.

不可换LED。

7.Regularly check; Regularly clean, etc.

定期检测，定期清洗等。

8. The luminaire should be positioned so that prolonged staring into the luminaire at a distance closer than 0.24m is not expected.

灯具的安装位置应使其不会长时间在小于0.24米的距离被盯着看。

9.灯具使用的为物理钢化玻璃，破碎后为颗粒状碎屑。

平面玻璃：Max 220°C, Min -40°C, Δt 200°C

The luminaire use physical tempered glass which become granular debris when broken.

Flat glass: Max 220°C, Min -40°C, Δt 200°C

10.此灯具采用“Y”连接，若有损坏，需要授权经销商或者电器专业人员进行整修或者更换电器。

If the external flexible cable or cord of this luminaire is damaged, it shall be exclusively replaced by the manufacturer or his service agent or a similar qualified person in order to avoid a hazard.

11.灯具零件更换应该由制造商或其代理机构相应有资格的人来操作。

The light source contained in this luminaire shall only be replaced by the manufacturer or his service agent or a similar qualified person.



Disclaimer

免责条款

Please mount and apply in accordance with the classification of the luminaire and the IP number as well as other notes marked in mounting instruction. Do not immerse in water. The manufacturer will not be held responsible for IP protection failure caused by improper usage above mentioned;

请根据本产品【安装说明】中标注的防护等级和其他注意事项，正确使用和安装灯具。不建议将本产品应用于浸水环境中，由此导致的灯具防护失效，生产商不承担责任；

The manufacturer will not be held responsible for product damages, physical injuries, or property damages caused by improper mount or improper usage;

如果不按照要求安装或操作，由此导致的产品损坏、人员伤害、或其他财产损失，生产商不承担责任；

The manufacturer will not be held responsible for product damages, physical injuries, or property damages caused by improper usage or modifications of the product.

由不当使用或自行更改产品结构而导致的产品损坏、人员伤害、或其他财产损失，生产商不承担责任。