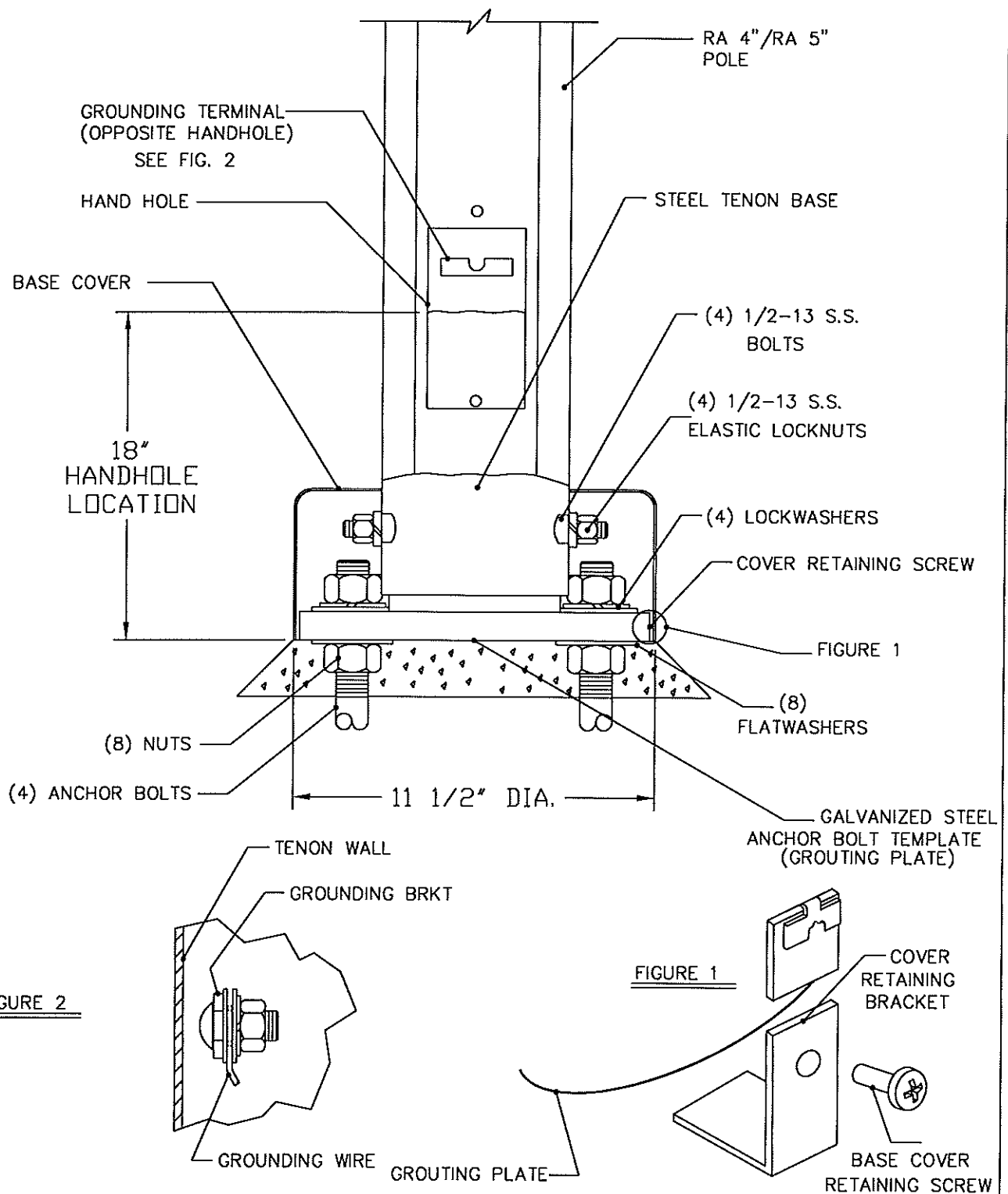


INSTALLATION INSTRUCTIONS

RA4/RA5 ROUND ALUMINUM POLES WITH STEEL BASE/TENON



Gardco Lighting
 1611 Clovis Barker Road, San Marcos, TX 78666
 Part No. B809134

6/15/07

PAGE 1 OF 3

INSTALLATION INSTRUCTIONS

RA4/RA5 ROUND ALUMINUM POLES WITH STEEL BASE/TENON

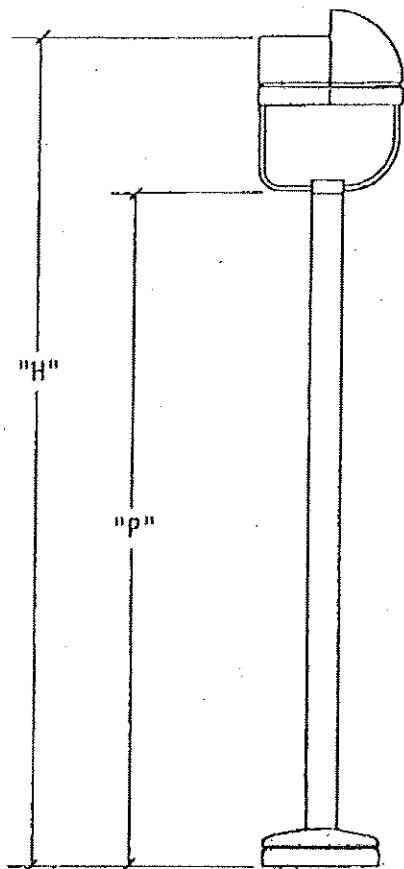
IMPORTANT: PLEASE READ THE FOLLOWING INSTRUCTIONS PRIOR TO INSTALLING GARDCO RA4/RA5 POLES. SEE BACK PAGE FOR POLE/LUMINAIRE HEIGHT INFORMATION.

1. Place the round aluminum pole in an elevated horizontal position with the hand hole facing in an upward direction and remove hand hole cover.
2. Insert bottom of pole shaft through hole in base cover and slide base cover up pole shaft, approximately 2'-0". Tape base cover to pole in this position to prevent movement when pole is erected.

CAUTION: POLE BASE COVER IS ONE PIECE AND MUST BE INSTALLED ON POLE PRIOR TO BASE/TENON AND LUMINAIRE INSTALLATION.

3. Ensure the length of the steel base/tenon assembly is as noted on the bottom of the aluminum shaft.
4. Slide the steel base/tenon assembly into the bottom of the pole lining up the hand hole opening in the tenon with the hand hole in the pole shaft.
5. Insert in each of the four holes in the base tenon and pole shaft the 1/2"-13 attachment bolt as illustrated and secure in position with elastic locknuts provided. (Tighten to 45 ft. - lbs.)
6. Attach luminaire(s) to pole as desired. (See applicable luminaire installation instruction sheet)
7. Install the lower nuts and flat washers on the anchor bolts, leveling with hand spirit level as precisely as possible across both axes and adjacent bolts.
8. Install galvanized steel grouting plate on anchor bolts.
9. Erect the pole on the anchor bolts, checking for correct orientation of luminaire(s). Install top washers and nuts finger tight.
10. Adjust nuts under the pole base to ensure vertical alignment of pole. Use plumbline, spirit level, or transit.
11. Tighten top bolts securely. Torque to even pressure.
12. Remove tape securing pole base cover to pole shaft and slide cover down shaft until it rests on grouting plate. Secure in position by installing cover retaining brackets and screws as illustrated in Figure 1.
13. Complete all wiring required and re-install hand hole cover on pole.





Mtg. Ht "H"	Nominal pole height "P"	
	4" pole CP/MP 17	5" pole CP/MP 22
8'	6' - 6"	N/A
10'	8' - 6"	8' - 2"
12'	10' - 6"	10' - 2"
15'	13' - 6"	13' - 2"
18'	N/A	16' - 2"
20'	N/A	18' - 2"
25'	N/A	23' - 2"

POLE/LUMINAIRE HEIGHT INFORMATION



Gardco Lighting

1611 Clovis Barker Road, San Marcos, TX 78666