

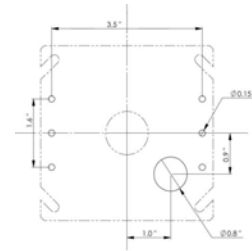


## DMNP24040-P-NA Power Supply

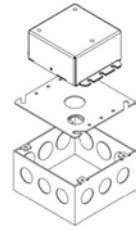
Supplements DyNet network DC supply

The Philips DMNP24040-P-NA is a Class 2 Plenum Rated power supply comprising a high-efficiency switch mode power converter with a comprehensive set of protection features.

- Support short term overload — Designed to support up to 150% of the rated current to suit high inrush current and transient loads.
- Withstand short circuit fault — Intended to indefinitely withstand short circuit fault across the output Class 2 terminals, with an auto-restart protection employed to safeguard the device and minimize energy delivered to the fault.
- Parallel installation — If required, up to four DMNP24040-P-NA units can be installed in parallel on a network spur, subject to Class 2 and cable rating limits.



Option 1



Option 2

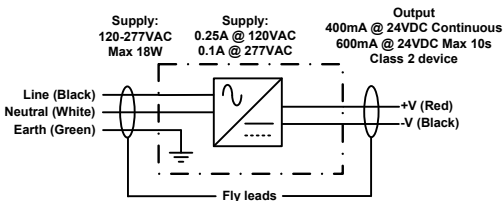
For detailed product information, please refer to the product information pages at [www.philips.com/lightingcontrolsna](http://www.philips.com/lightingcontrolsna).

Specifications

Due to continuous improvements and innovations, specifications may change without notice.

| Item               | Specification          | Details   |
|--------------------|------------------------|---|
| Electrical         | Input Voltage          | 120 - 277 VAC (+10% / -15%), 50 / 60 Hz, Single Phase & Neutral<br><br>Input power: Max 18 W<br>Input current: Up to 0.25 A @ 120 VAC, or 0.1 A @ 277 VAC |
|                    | Output                 | 400 mA @ 24 VDC continuous<br>600 mA @ 24 VDC max 10s<br>Class 2  |
|                    | Protection             | Output overload<br>Output short circuit<br>Thermal shutdown   |
| Physical           | Supply Wires           | 14 AWG, PVC insulated, 600 V / 105° C rated,<br>320 mm long flying leads<br>Line - black<br>Neutral - white<br>Ground - green                             |
|                    | Output Wires           | 18 AWG, Teflon insulated 300 V / 200° C<br>320 mm long flying leads <br>+ V - red<br>- V - black  |
|                    | Dimensions (H x W x D) | 1.7" x 3.1" x 3.9" (43 mm x 94 mm x 100 mm)   |
|                    | Packed Weight          | 11.3 oz (320 g)   |
|                    | Construction           | Metal Housing   |
|                    | Operating Conditions   | Temperature: 32 to 122° F (0 to 50° C) ambient<br>Humidity: 0 to 95% non-condensing   |
|                    | Storage & Transport    | Temperature: -13 to 140° F (-25 to 60° C) ambient<br>Humidity: 0 to 90% non-condensing  |
| Certification      | Compliance             | UL/cUL Listed, ICES, FCC, RoHS Compliant  |
| Options & Ordering | Standard Product       | DMNP24040-P-NA (Philips 12NC - 913703580309)  |

Electrical Diagram



Compatibility

| Product Code      | Type               |
|-------------------|--------------------|
| DPNA, DLPA, DR2PA | User Interfaces    |
| DTP100 & DTP170   | Color Touchscreens |
| DTC602            | Timeclock          |



**Philips Lighting North America**  
200 Franklin Square Dr  
Somerset, NJ, United States  
Tel: 1-800-526-2731  
Email: controls.support@philips.com  
Web: www.philips.com/lightingcontrolsna

**Philips Lighting Canada**  
281 Hillmount Road  
Markham, Ontario L6C 2S3  
Canada

Specifications subject to change without notice. ©WMGD Pty Ltd Trading as Dynalite. Unit 6, 691 Gardeners Road Mascot 2020 Australia. ABN 33 097 246 921. All rights reserved. Dynalite, DyNet and associated logos are the registered trademarks of WMGD Pty Ltd. Not to be reproduced without permission.