

Read and understand these instructions before installing luminaire (fixture) .

This luminaire is intended for installation in accordance with the National Electrical Code and local regulations. To assure full compliance with local codes and regulations, check with your local electrical inspector before installation. To prevent electrical shock, turn off electricity at fuse box before proceeding. Allow fixture to cool before handling.

Retain these instructions for maintenance reference.

INSTRUCTIONS FOR INSTALLING AND OPERATING 22SS6, 22MC6, 22GC6, 22OR6, 22MW6, 22GR6, 22SS6R, 22MC6R, 22GC6R, 22OR6R, 22MW6, & 22GR6 LOW VOLTAGE ALCYON LUMINAIRES. FOR USE WITH LIGHTOLIER LYTESPAN TRACK.

INSTRUCTIONS FOR ATTACHING A LOW VOLTAGE ALCYON LUMINAIRE TO SINGLE CIRCUIT LYTESPAN TRACK AND ACCESSORIES:

CAUTION: HOT SURFACE. Keep away from curtains and any other combustibles.

1. Turn off power to TRACK.
2. Insert luminaire into TRACK as shown in FIG. 1. The STEM must be on the same side as the BEAD.
3. Rotate TRANSFORMER HOUSING 90 ° clockwise (see FIG. 1) until it snaps in place (see FIG. 2).
4. TO REMOVE: Lightly pull down TRANSFORMER HOUSING and rotate counterclockwise.

INSTRUCTIONS FOR CONVERTING A LOW VOLTAGE ALCYON LUMINAIRE TO OPERATE ON 2 CIRCUIT ADVENT LYTESPAN TRACK:

TO POWER ON LOWER CIRCUIT (See FIG. 4):

Follow instructions above for installing to a single circuit Lytespan Track.

TO POWER ON UPPER CIRCUIT (See FIG. 4):

1. Raise BRASS CONTACT to high position by pulling CONTACT as high as stop permits (See FIG. 3).
2. Follow instructions above for installing into track.

CAUTION: RISK OF BURN. Allow time for luminaire to cool before touching track head for relamping or positioning.

INSTRUCTIONS FOR REMOVING ACCESSORY SNOOT ON 22SS6, 22MC6, 22OR6, & 22MW6 LUMINAIRES:

1. Turn off power to TRACK.
2. While supporting HOUSING, pull and drop SNOOT into open position (See FIG. 5).

FOR LAMPING AND ACCESSORY INFORMATION SEE PAGE 2.

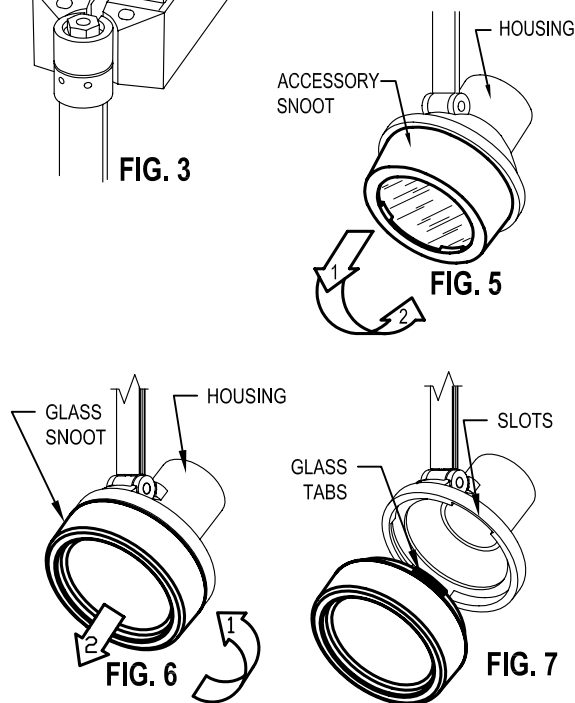
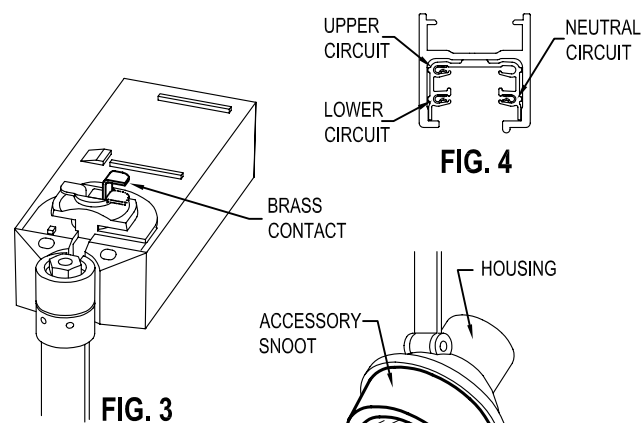
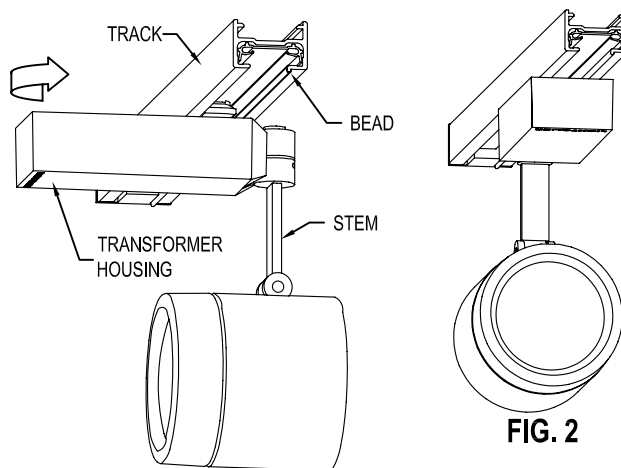
3. To close SNOOT, support HOUSING and rotate SNOOT back into closed position until it snaps tight and is secure as shown in FIG. 5.

INSTRUCTIONS FOR REMOVING GLASS SNOOT ON 22GC6 & 22GR6:

1. Turn off power to TRACK.
2. While supporting HOUSING, rotate GLASS SNOOT counterclockwise and pull out of housing (See FIG. 6).

FOR LAMPING INFORMATION SEE PAGE 2.

3. To reattach GLASS SNOOT, support HOUSING, align GLASS TABS with SLOTS, insert GLASS SNOOT into HOUSING and rotate SNOOT clockwise until it stops (see FIG. 7).



CAUTION: RISK OF BURN. Allow time for luminaire to cool before touching track head for relamping or positioning.

INSTRUCTIONS FOR LAMPING LOW VOLTAGE ALCYON LUMINAIRE:

1. Turn off power to TRACK.
2. Remove ACCESSORY or GLASS SNOOT as shown on PAGE 1.
3. Insert the two LAMP PINS into the SOCKET HOLES (See FIG. 8).
4. Re-assemble ACCESSORY or GLASS SNOOT onto HOUSING as shown on PAGE 1.

LAMPING INFORMATION		
CATALOG NUMBER	USE ONLY 12V MR16 TYPE LAMP	USE ONLY 12V MR16 TYPE LAMPS
22SS6, 22SS6R	ADF2, AF2*, AF2HC, 22SR6	50W or IR 37W MAX
22MC6, 22MC6R		
22OR6, 22OR6R		
22GR6, 22GR6R	NO ACCESSORIES	50W or IR 37W MAX (36° or wider beam spread recommended)
22GC6, 22GC6R		
22MW6, 22MW6R		

INSTRUCTIONS FOR INSTALLING ACCESSORIES INTO ACCESSORY SNOOT ON 22SS6, 22MC6, & 22OR6:

1. Turn off power to TRACK.
 2. Remove ACCESSORY SNOOT as shown on PAGE 1.
 3. Remove ACCESSORY SPRING by squeezing together and pulling out of SNOOT as shown in FIG. 9.
- NOTE: When using accessory LENS, remove clear glass LENS from SNOOT before installing accessory.
4. Insert accessories as shown in FIG. 9 and 10. If using a LOUVER (AF2HC) or SNOOT (22SR6), they must be installed first, then a LENS is inserted on top of them.
- NOTE: SNOOT accepts 2 total accessories (1 LENS plus either 1 LOUVER AF2HC or 1 SNOOT (22SRG)). **A LENS MUST BE INSTALLED AT ALL TIMES.**
5. Reinstall ACCESSORY SPRING by squeezing together and pushing into SNOOT as shown in FIG. 9. Assure that all 4 SPRING TABS are flat against LENS.
 6. Reassemble ACCESSORY SNOOT onto HOUSING as shown on PAGE 1.

INSTRUCTIONS FOR POSITIONING LOW VOLTAGE ALCYON LUMINAIRES:

1. Turn off power to TRACK and allow time for luminaire to cool.
 2. Rotate HOUSING horizontally and vertically as shown in FIG. 11.
- NOTE: Luminaires rotate 360° horizontally and 90° vertically. Forcing past vertical rotation stop could permanently damage luminaire.

