

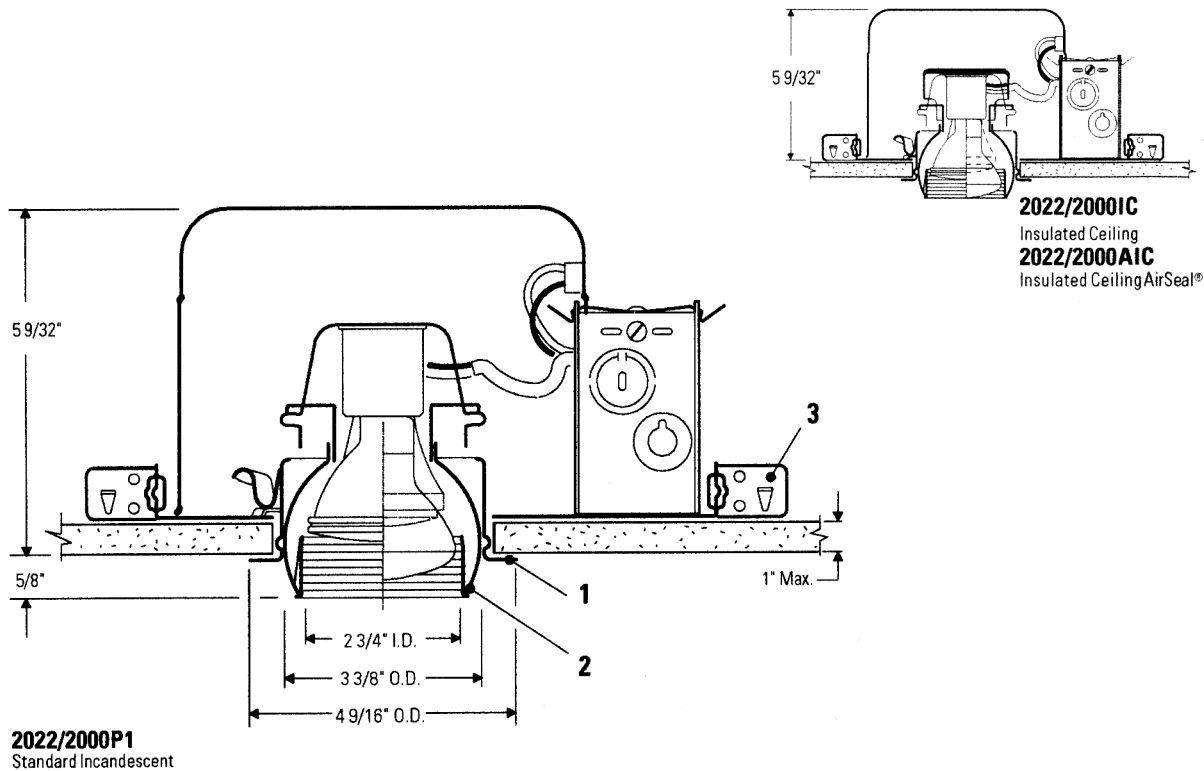
3 3/4" Aperture Eyeball Reflector Trim

35°

Lytecaster®
Recessed
Downlighting

2022
B0101

TYPE:



2022/2000P1
Standard Incandescent

2022/2000IC
Insulated Ceiling
2022/2000AIC
Insulated Ceiling AirSeal®

Complete Fixture consists of FRAME-IN KIT & REFLECTOR TRIM. Select each separately.

Reflector Trim

Frame-In Kit—See Individual Frame-In Kit Specification Sheets

- ☐ **2022** Matte White w/Black Baffle
☐ **2022WH** Matte White w/White Baffle

Frame-In Kit	Installation Type	Lamping	Height
<input type="checkbox"/> 2000P1	Standard Non-IC	50W PAR20 75W PAR16, R20	5 9/32"
<input type="checkbox"/> 2000IC <input type="checkbox"/> 2000AIC	IC IC Remodeler	50W PAR20, R20 55W PAR16	5 9/32" 5 9/32"

Features

- Trim Ring:** Die-formed aluminum, 0.040" thick (18 ga.). Matte white finish.
- Eyeball Housing:** Die-formed, one piece, aluminum, 0.040" thick (18 ga.). Provides 358° horizontal rotation and 0° to 35° vertical adjustment; (0° to 30° with 2000IC and 2000AIC). Matte white or polished brass finish.
- Frame-In Kit:** (2000P1 standard frame shown). Other frames shown on the right. See Frame-In Kit specification sheets for more details.

Options & Accessories

Retaining Clips: **1955** - For Installing in Existing Ceiling

Labels

U.L. (Suitable for Damp Locations); I.B.E.W.
U.S. Patent Numbers: 4,313,154; 4,327,403; 5,045,985

WE RESERVE THE RIGHT TO CHANGE DETAILS OF DESIGN, MATERIALS,
AND FINISH.

LIGHTOLIER a GENLYTE THOMAS company.
631 Airport Road, MA 02720
(508) 679-8131 • Fax (508) 674-4710

Copyright 2001

LIGHTOLIER®

2022

Lytecaster[®]
Recessed
Downlighting

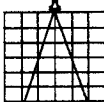

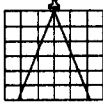
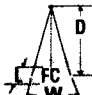
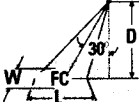

3 3/4" Aperture
Eyeball
Reflector Trim



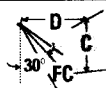
TYPE:

Lighting Performance Data

PAR Lamps:		Narrow			Medium		
L Beam length D Distance FC Footcandles	W Beam width A Aiming angle	50W PAR20 NSP (T-H)	55W PAR16 NSP (T-H)	75W PAR16 SP (T-H)	50W PAR20 NFL (T-H)	55W PAR16 NFL (T-H)	75W PAR16 NFL (T-H)
Data based on bare lamp photometrics. Dashed lines in beam spreads indicate narrow axes of oval shaped beams. L and W are the outer points where the candlepower drops to 50% of the maximum. FC is the initial footcandles at the center of beam.							
Footcandles (On Beam Center at 6')		128	139	208	35	36	56
Beam Spread (To 50% Max. CP)		12°	12°	12°	32°	30°	30°
Max. Candlepower (Candelas)		4600	5000	7500	1250	1300	2000
Rated Life (Hours)		2000	2000	2000	2000	2000	2000
0° AIMING ANGLE 		D FC L W	D FC L W	D FC L W	D FC L W	D FC L W	D FC L W
Illumination on Horizontal Plane		6' 128 1.3' 1.3'	6' 139 1.3' 1.3'	7' 153 1.5' 1.5'	3' 139 1.7' 1.7'	3' 144 1.6' 1.6'	4' 125 2.1' 2.1'
		8' 72 1.7' 1.7'	8' 78 1.7' 1.7'	10' 75 2.1' 2.1'	5' 50 2.9' 2.9'	5' 52 2.7' 2.7'	6' 56 3.2' 3.2'
		10' 46 2.1' 2.1'	10' 50 2.1' 2.1'	13' 44 2.7' 2.7'	7' 26 4.0' 4.0'	7' 27 3.8' 3.8'	8' 31 4.3' 4.3'
		12' 32 2.5' 2.5'	12' 35 2.5' 2.5'	16' 26 3.4' 3.4'	9' 15 5.2' 5.2'	9' 16 4.8' 4.8'	10' 20 5.4' 5.4'
30° AIMING ANGLE 		D FC L W	D FC L W	D FC L W	D FC L W	D FC L W	D FC L W
Illumination on Horizontal Plane		5' 120 1.4' 1.2'	5' 130 1.4' 1.2'	6' 135 1.7' 1.5'	3' 90 2.4' 2.0'	3' 94 2.2' 1.9'	3' 144 2.2' 1.9'
		7' 61 2.0' 1.7'	7' 66 2.0' 1.7'	9' 60 2.5' 2.2'	5' 32 3.9' 3.3'	5' 34 3.7' 3.1'	5' 52 3.7' 3.1'
		9' 37 2.5' 2.2'	9' 40 2.5' 2.2'	12' 34 3.4' 2.9'	7' 17 5.5' 4.6'	7' 17 5.1' 4.3'	7' 27 5.1' 4.3'
		11' 25 3.1' 2.7'	11' 27 3.1' 2.7'	15' 22 4.2' 3.6'	9' 10 7.1' 6.0'	9' 10 6.6' 5.6'	9' 16 6.6' 5.6'
30° AIMING ANGLE 		D FC L W	D FC L W	D FC L W	D FC L W	D FC L W	D FC L W
Illumination on Vertical Plane		2' 144 1.7' 0.8'	2' 156 1.7' 0.8'	2' 234 1.7' 0.8'	1' 156 3.0' 1.1'	1' 163 2.7' 1.1'	1' 250 2.7' 1.1'
		3' 64 2.6' 1.3'	3' 69 2.6' 1.3'	3' 104 2.6' 1.3'	2' 39 6.1' 2.3'	2' 41 5.5' 2.1'	2' 63 5.5' 2.1'
		4' 36 3.5' 1.7'	4' 39 3.5' 1.7'	4' 59 3.5' 1.7'	3' 17 9.1' 3.4'	3' 18 8.2' 3.2'	3' 28 8.2' 3.2'
		5' 23 4.3' 2.1'	5' 25 4.3' 2.1'	5' 38 4.3' 2.1'	4' 10 12.2' 4.6'	4' 10 10.9' 4.3'	4' 16 10.9' 4.3'

R Lamps:		Wide																																																														
L Beam length D Distance FC Footcandles	W Beam width A Aiming angle	30W R20 FL 	50W R20 FL 	75W R20 FL 																																																												
Data based on bare lamp photometrics. Dashed lines in beam spreads indicate narrow axes of oval shaped beams. L and W are the outer points where the candlepower drops to 50% of the maximum. FC is the initial footcandles at the center of beam.																																																																
Footcandles (On Beam Center at 6')		8	13	23																																																												
Beam Spread (To 50% Max. CP)		35°	38°	46°																																																												
Max. Candlepower (Candelas)		300	530	825																																																												
Rated Life (Hours)		2000	2000	2000																																																												
0° AIMING ANGLE  Illumination on Horizontal Plane		<table><tr><th>D</th><th>FC</th><th>L</th><th>W</th></tr><tr><td>2'</td><td>75</td><td>1.3'</td><td>1.3'</td></tr><tr><td>3'</td><td>33</td><td>1.9'</td><td>1.9'</td></tr><tr><td>4'</td><td>19</td><td>2.5'</td><td>2.5'</td></tr><tr><td>5'</td><td>12</td><td>3.2'</td><td>3.2'</td></tr></table>	D	FC	L	W	2'	75	1.3'	1.3'	3'	33	1.9'	1.9'	4'	19	2.5'	2.5'	5'	12	3.2'	3.2'	<table><tr><th>D</th><th>FC</th><th>L</th><th>W</th></tr><tr><td>2'</td><td>133</td><td>1.4'</td><td>1.4'</td></tr><tr><td>4'</td><td>33</td><td>2.8'</td><td>2.8'</td></tr><tr><td>6'</td><td>15</td><td>4.1'</td><td>4.1'</td></tr><tr><td>8'</td><td>8</td><td>5.5'</td><td>5.5'</td></tr></table>	D	FC	L	W	2'	133	1.4'	1.4'	4'	33	2.8'	2.8'	6'	15	4.1'	4.1'	8'	8	5.5'	5.5'	<table><tr><th>D</th><th>FC</th><th>L</th><th>W</th></tr><tr><td>2'</td><td>206</td><td>1.7'</td><td>1.7'</td></tr><tr><td>4'</td><td>52</td><td>3.4'</td><td>3.4'</td></tr><tr><td>6'</td><td>23</td><td>5.1'</td><td>5.1'</td></tr><tr><td>8'</td><td>13</td><td>6.8'</td><td>6.8'</td></tr></table>	D	FC	L	W	2'	206	1.7'	1.7'	4'	52	3.4'	3.4'	6'	23	5.1'	5.1'	8'	13	6.8'	6.8'
D	FC	L	W																																																													
2'	75	1.3'	1.3'																																																													
3'	33	1.9'	1.9'																																																													
4'	19	2.5'	2.5'																																																													
5'	12	3.2'	3.2'																																																													
D	FC	L	W																																																													
2'	133	1.4'	1.4'																																																													
4'	33	2.8'	2.8'																																																													
6'	15	4.1'	4.1'																																																													
8'	8	5.5'	5.5'																																																													
D	FC	L	W																																																													
2'	206	1.7'	1.7'																																																													
4'	52	3.4'	3.4'																																																													
6'	23	5.1'	5.1'																																																													
8'	13	6.8'	6.8'																																																													
30° AIMING ANGLE  Illumination on Horizontal Plane		<table><tr><th>D</th><th>FC</th><th>L</th><th>W</th></tr><tr><td>2'</td><td>49</td><td>1.7'</td><td>1.5'</td></tr><tr><td>3'</td><td>22</td><td>2.6'</td><td>2.2'</td></tr><tr><td>4'</td><td>12</td><td>3.5'</td><td>2.9'</td></tr><tr><td>5'</td><td>8</td><td>4.3'</td><td>3.6'</td></tr></table>	D	FC	L	W	2'	49	1.7'	1.5'	3'	22	2.6'	2.2'	4'	12	3.5'	2.9'	5'	8	4.3'	3.6'	<table><tr><th>D</th><th>FC</th><th>L</th><th>W</th></tr><tr><td>2'</td><td>86</td><td>1.9'</td><td>1.6'</td></tr><tr><td>4'</td><td>22</td><td>3.8'</td><td>3.2'</td></tr><tr><td>6'</td><td>10</td><td>5.7'</td><td>4.8'</td></tr><tr><td>8'</td><td>5</td><td>7.6'</td><td>6.4'</td></tr></table>	D	FC	L	W	2'	86	1.9'	1.6'	4'	22	3.8'	3.2'	6'	10	5.7'	4.8'	8'	5	7.6'	6.4'	<table><tr><th>D</th><th>FC</th><th>L</th><th>W</th></tr><tr><td>2'</td><td>134</td><td>2.4'</td><td>2.0'</td></tr><tr><td>4'</td><td>33</td><td>4.8'</td><td>3.9'</td></tr><tr><td>6'</td><td>15</td><td>7.2'</td><td>5.9'</td></tr><tr><td>8'</td><td>8</td><td>9.6'</td><td>7.8'</td></tr></table>	D	FC	L	W	2'	134	2.4'	2.0'	4'	33	4.8'	3.9'	6'	15	7.2'	5.9'	8'	8	9.6'	7.8'
D	FC	L	W																																																													
2'	49	1.7'	1.5'																																																													
3'	22	2.6'	2.2'																																																													
4'	12	3.5'	2.9'																																																													
5'	8	4.3'	3.6'																																																													
D	FC	L	W																																																													
2'	86	1.9'	1.6'																																																													
4'	22	3.8'	3.2'																																																													
6'	10	5.7'	4.8'																																																													
8'	5	7.6'	6.4'																																																													
D	FC	L	W																																																													
2'	134	2.4'	2.0'																																																													
4'	33	4.8'	3.9'																																																													
6'	15	7.2'	5.9'																																																													
8'	8	9.6'	7.8'																																																													
30° AIMING ANGLE  Illumination on Vertical Plane		<table><tr><th>D</th><th>FC</th><th>L</th><th>W</th></tr><tr><td>1'</td><td>38</td><td>3.6'</td><td>1.3'</td></tr><tr><td>2'</td><td>9</td><td>7.2'</td><td>2.5'</td></tr><tr><td>3'</td><td>4</td><td>10.8'</td><td>3.8'</td></tr><tr><td>4'</td><td>2</td><td>14.4'</td><td>5.0'</td></tr></table>	D	FC	L	W	1'	38	3.6'	1.3'	2'	9	7.2'	2.5'	3'	4	10.8'	3.8'	4'	2	14.4'	5.0'	<table><tr><th>D</th><th>FC</th><th>L</th><th>W</th></tr><tr><td>1'</td><td>66</td><td>4.3'</td><td>1.4'</td></tr><tr><td>2'</td><td>17</td><td>8.6'</td><td>2.8'</td></tr><tr><td>3'</td><td>7</td><td>12.8'</td><td>4.1'</td></tr><tr><td>4'</td><td>4</td><td>17.1'</td><td>5.5'</td></tr></table>	D	FC	L	W	1'	66	4.3'	1.4'	2'	17	8.6'	2.8'	3'	7	12.8'	4.1'	4'	4	17.1'	5.5'	<table><tr><th>D</th><th>FC</th><th>L</th><th>W</th></tr><tr><td>1'</td><td>103</td><td>7.4'</td><td>1.7'</td></tr><tr><td>2'</td><td>26</td><td>14.8'</td><td>3.4'</td></tr><tr><td>3'</td><td>11</td><td>22.2'</td><td>5.1'</td></tr><tr><td>4'</td><td>6</td><td>29.6'</td><td>6.8'</td></tr></table>	D	FC	L	W	1'	103	7.4'	1.7'	2'	26	14.8'	3.4'	3'	11	22.2'	5.1'	4'	6	29.6'	6.8'
D	FC	L	W																																																													
1'	38	3.6'	1.3'																																																													
2'	9	7.2'	2.5'																																																													
3'	4	10.8'	3.8'																																																													
4'	2	14.4'	5.0'																																																													
D	FC	L	W																																																													
1'	66	4.3'	1.4'																																																													
2'	17	8.6'	2.8'																																																													
3'	7	12.8'	4.1'																																																													
4'	4	17.1'	5.5'																																																													
D	FC	L	W																																																													
1'	103	7.4'	1.7'																																																													
2'	26	14.8'	3.4'																																																													
3'	11	22.2'	5.1'																																																													
4'	6	29.6'	6.8'																																																													

Beam Center Location



This chart locates the distance **C** to the center of the light beam for various distance **D** when the lamp is aimed 30° from vertical, the preferred aiming angle for lighting pictures on the wall,

Distance D (ft.)	1	2	3	4	5	6	7	8	9	10
Distance C (ft.)	1.7	3.5	5.2	6.9	8.7	10.4	12.1	13.8	15.6	17.3

LIGHTOLIER[®]