

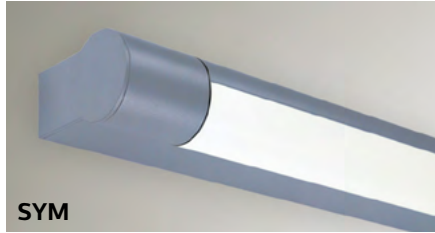
# Day-Brite CFI

by Signify

## Healthcare

Tableau wall mount

LED



Project: \_\_\_\_\_  
 Location: \_\_\_\_\_  
 Cat.No: \_\_\_\_\_  
 Type: \_\_\_\_\_  
 Lamps: \_\_\_\_\_ Qty: \_\_\_\_\_  
 Notes: \_\_\_\_\_

Day-Brite / CFI Tableau wall mount is a flexible solution for a variety of commercial and residential applications. The rotatable aperture allows field aiming to direct the light at the target. It can be surface-mounted to the wall either horizontally or vertically and is an ideal solution for bathroom vanities.

### Ordering guide

Example: TAB4L-ASY-120-RSW

Family	Housing Style	Voltage	Finish	Options
<input type="text"/> -	<b>SYM</b> -	<input type="text"/> -	<input type="text"/> -	<input type="text"/>
<b>2' nominal length</b> <b>TAB2L</b> 3500K LED standard <b>3' nominal length</b> <b>TAB3L</b> 3500K LED standard <b>4' nominal length</b> <b>TAB4L</b> 3500K LED standard	<b>SYM</b> Symmetric	<b>120</b> 120V <b>277</b> 277V	<b>SWH</b> Soft White <b>AL</b> Aluminum <b>PC</b> Polished Chrome	<b>RSW<sup>1</sup></b> Rocker switch <b>DIM</b> Dimming <b>LED</b> <b>30K</b> 3000K LED <b>40K</b> 4000K LED

#### Footnotes:

<sup>1</sup> Only available with 120V models.

### Features

- Tableau is available in three standard finishes.
- LED luminaire lengths range from a nominal 2' to 4'
- An optional on/off switch is available.
- Long life LEDs provide 50,000 hours of rated life (L70).
- Minimum 80 CRI LEDs.



# TAB Tableau wall mount

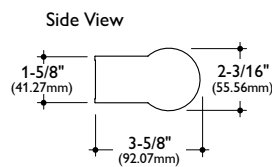
## LED

### Specifications

- **Construction:** The housing is extruded aluminum with die cast end caps. The back plate is formed from 18 gauge galvanized steel.
- **Finish:** Tableau is available in a soft white or matte aluminum painted finish. It can also be specified in a plated polished chrome finish. All standard paint colors have an antimicrobial finish to inhibit the growth of microbes.
- **Lens:** Frosted acrylic lens is standard.
- **Light Sources:** LED luminaires have a standard 3500K CCT with minimum 80 CRI.
- **Switching:** Optional on/off rocker switch is available (120V only).
- **Electrical:** 347 volt applications are not supported. LED drivers have Class 2 rated output.
- **Installation:** Back plate is secured to the wall with wall anchors. The 7/8" knockout in the back plate accommodates trade-size electrical fitting. The housing snaps onto the back plate and is secured with two screws.
- **Listing:** cULus listed for damp locations.

### Dimensions

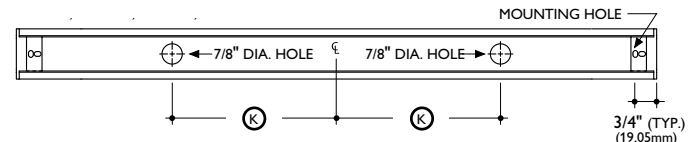
Model No.	Ⓛ	Ⓚ
TAB2L	27-5/8" (701.67mm)	7-3/32" (180.18mm)
TAB3L	39-7/16" (1001.71mm)	N/A
TAB4L	51-1/4" (1301.75mm)	N/A



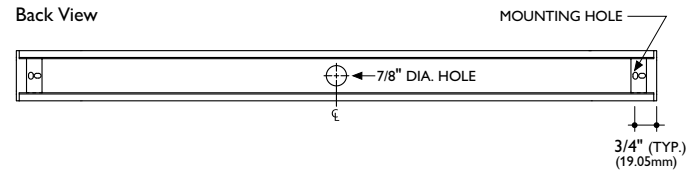
Front View



Back View



Back View



### Electrical Data

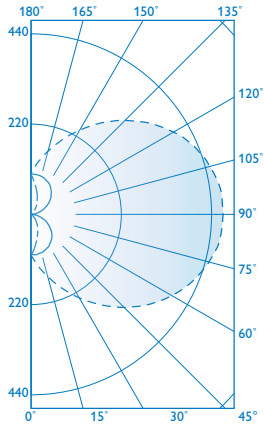
LED	
Voltage	120V
Watts	14.9
Efficacy	102 lm/W

# TAB Tableau wall mount

LED

## TAB3L

LED light source  
Symmetric  
Report No.: ITL76964  
Efficacy: 102 lm/W



LEGEND:  
0-deg -----  
90-deg -----  
180-deg -----

## CO-EFFICIENTS OF UTILIZATION | Effective floor cavity reflectance=20%

rc	80				70				50			30			10			0	
rw	70	50	30	10	70	50	30	10	50	30	10	50	30	10	50	30	10	0	
RCR	0	107	107	107	107	99	99	99	99	83	83	83	69	69	69	56	56	56	50
	1	93	87	81	76	85	80	75	70	66	62	59	54	51	48	42	40	38	33
	2	83	74	66	59	76	67	60	54	56	50	45	45	41	37	35	32	29	24
	3	75	63	54	47	68	58	50	43	48	41	36	38	34	30	30	26	23	19
	4	68	55	46	39	62	50	42	36	42	35	30	33	28	24	26	22	19	15
	5	62	49	39	32	56	44	36	30	37	30	25	29	24	20	23	19	16	12
	6	57	43	34	27	52	40	31	25	33	26	21	26	21	17	20	16	13	10
	7	52	39	30	24	48	35	28	22	29	23	18	24	19	15	18	14	11	9
	8	48	35	26	21	44	32	24	19	27	20	16	22	17	13	17	13	10	7
	9	45	32	24	18	41	29	22	17	24	18	14	20	15	11	15	12	9	7
	10	42	29	21	16	38	27	20	15	22	16	12	18	13	10	14	11	8	6

## CANDLEPOWER DISTRIBUTION

Vertical Angle	Horizontal Angle				
	0°	45°	90°	135°	180°
0°	99	99	99	99	99
5.0	116	110	99	88	85
15.0	157	137	97	68	58
25.0	207	164	91	49	38
35.0	263	191	83	33	22
45.0	321	216	72	19	11
55.0	373	235	56	9	4
65.0	417	250	40	2	0
75.0	449	260	22	0	0
85.0	466	265	5	0	0
95.0	467	266	5	0	0
105.0	451	260	20	0	0
115.0	422	252	37	2	0

## ZONAL LUMEN SUMMARY

Zone	Lumens	% Fixt.
0-30	88	5.8
0-40	159	10.5
0-60	360	23.7
0-90	758	50.0
90-120	399	26.3
90-130	509	33.6
90-150	671	44.2
90-180	758	50.0
0-180	1517	100.0

