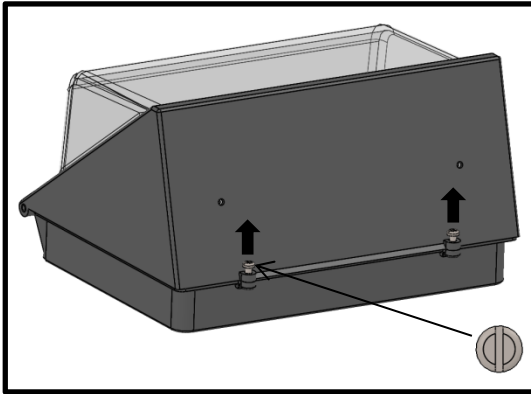


# INSTALLATION INSTRUCTIONS

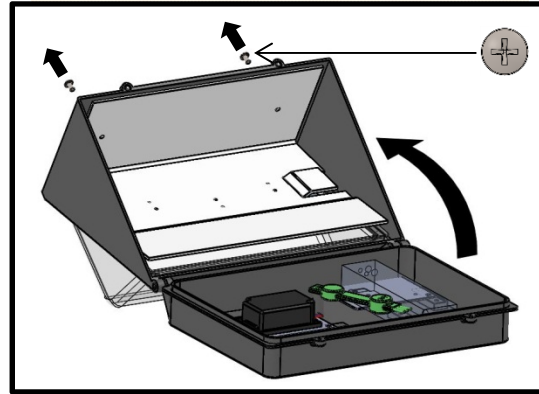
## WPM LENS REPLACEMENT

Philips Lighting Company  
200 Franklin Square Drive  
Somerset, NJ 08873  
Phone: 855-486-2216

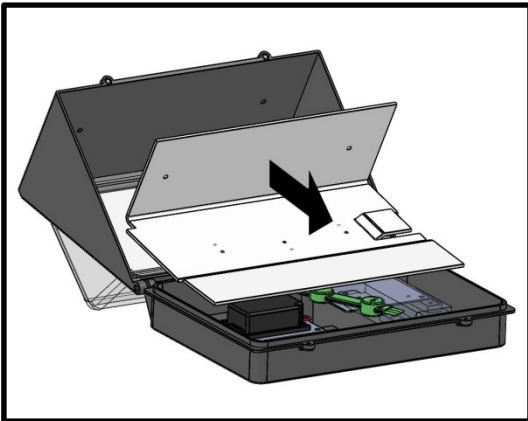
Philips Lighting Company  
281 Hillmount Road  
Markham, ON, Canada L6C 2S3  
Phone: 855-486-2216



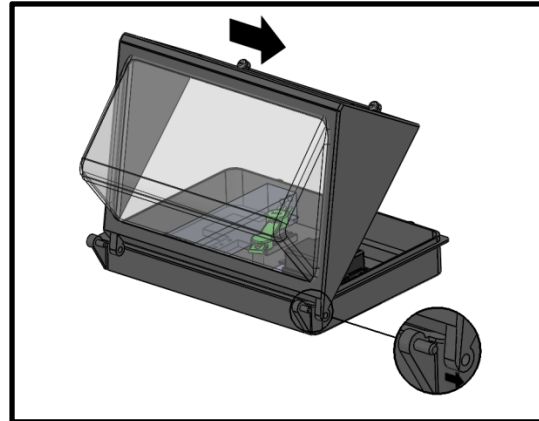
STEP 1: Loosen captive screws to open lens frame.



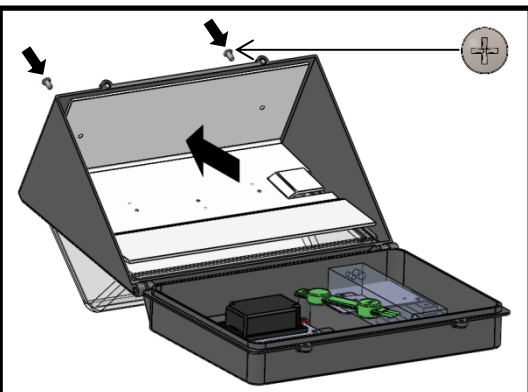
STEP 2: Open lens frame. Remove screws that attach the heatsink to the lens frame.



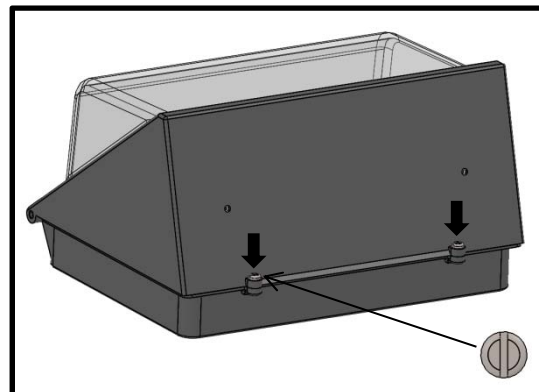
STEP 3: Remove heatsink from lens frame. Do not disconnect LED board wires from driver.



STEP 4: Remove the wire retainer assembly (not shown). Slide lens frame to the right until the lens frame becomes unhinged. Replace old lens frame with new lens frame and re-attach the wire retainer assembly.



STEP 5: Attach the heatsink to the new lens frame using the #10-24 x 1/2" screws and new sealing washers (provided).



STEP 6: Close the lens frame and tighten the screws to fasten the lens frame to the housing.