

UID8530 Color Temperature DMX Datasheet

ToBeTouched User interface

1/4

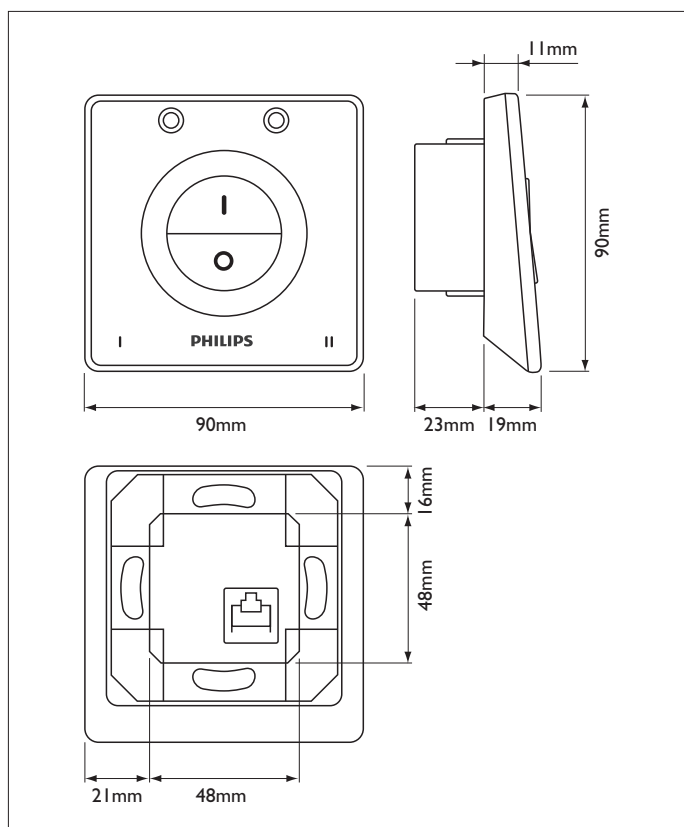


General description

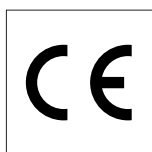
The ToBeTouched UID8530 Color Temperature DMX user interface panel is designed for intuitive control of color temperature variation on DMX lighting systems. Direct access to a specific color point is provided via a touch-sensitive backlit color temperature selection ring. The selected color can be stored in one of the two user-defined presets available on the front of the panel.

Building upon the iconic design and user-friendliness of the color ring used in LivingColors, the ToBeTouched range of intuitive user interfaces brings the same style and ease of interaction to professional lighting applications.

The ToBeTouched range comprises various models. These range from a simple on/off switch, plus a version with dimming, through to a cool/warm-white controller and a full-color model. Assisting the user with light, sound and color feedback, these easy-to-install interfaces make operating a lighting system straightforward – and fun!

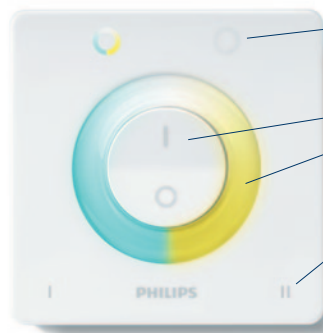


Dimensions in mm



PHILIPS

General device features



- Mode buttons for toggling between functions: color temperature and intensity.
- On/off switch.
- Backlit light ring for direct feedback / feed-forward and an attractive appearance.
- Preset buttons for selecting a user-defined preset.
- Proximity detection.
- Audio feedback.
- RJ45 connector for connection to PSU and DMX output.

Functionality of mode buttons, preset buttons and on/off switch

- | | | |
|------|--------------------------|----------------------------------------------------------------------------------------------------------------------------------------------------------------------------|
| | On/off | <ul style="list-style-type: none"> • On/off switch: turns all lights on or off. |
| | Color | <ul style="list-style-type: none"> • Color temperature button: activates the color temperature ring and allows color temperature to be adjusted. |
| | Intensity | <ul style="list-style-type: none"> • Intensity button: activates the intensity ring and allows intensity to be adjusted (minimum dim level is DMX value 1). |
| I/II | Static presets selection | <ul style="list-style-type: none"> • Preset buttons: for selecting static presets (user-definable). |

If the intensity is low (<25%) and the user chooses another color temperature, the device will automatically increase the intensity to 25%, in order to support the feasibility of the change.

Adjustment of preset buttons



clockwise



counter clockwise

- Presets can be recalled by briefly touching a preset button.
- Presets can be stored by holding down the preset buttons (for 3 seconds). The ring indicates the progress by gradually filling up (clockwise). The device indicates with a short beep that the setting has been stored.
- The upper half of the on/off switch can be used as a preset. If defined as a preset, the device will always set the lights to the chosen light setting. If no preset is defined, the device will set the light to the light setting last used.
- If a preset button is held down for longer than 7 seconds, the factory default setting is restored. The ring indicates the progress by gradually filling up for a second time (counterclockwise). The device indicates with a long beep that the factory default setting has been restored.
- Factory default preset 1: cool white; preset 2: warm white; on/off switch: last light status.

Locking the preset buttons



- Lock the preset buttons against being overwritten by pressing the color temperature and intensity buttons simultaneously for 4 seconds. When presets are locked they cannot be stored or reset.
- Audio feedback: locked - single beep / unlocked - double beep. In locked mode the device gives a failure beep indicating that it is not possible to store or reset presets.

Audio



- The device supports the user with audio feedback.
- Short/long beep: when storing/resetting presets.
 - Single/double beep: when toggling between muted/unmuted state and between locked/unlocked preset.
 - Device clicks: when touching/sliding the ring and touching/pressing a mode/preset.
 - Pressing the ring at 3 o'clock and 9 o'clock for more than 4 seconds will toggle between muted and unmuted state. When muted state is set a single beep will sound; when unmuted state is set a double beep will sound.

Proximity detection & Sleep mode

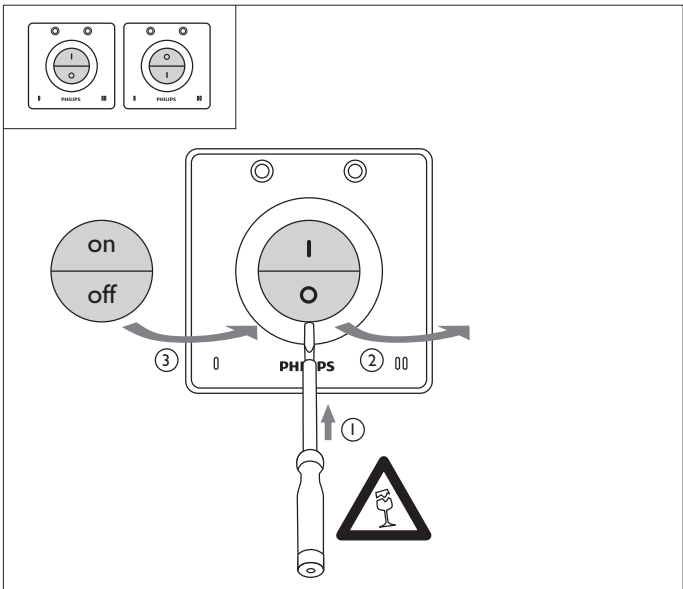
- The device wakes up, showing the color temperature ring, when a finger comes within 15 cm of it. Make sure that the ground wire is properly connected to the PSU (UIA8550, 9137 003 38603).
- If no one is within range of the device after 15 seconds the backlight is switched off and the device goes into sleep mode.

Included in the package

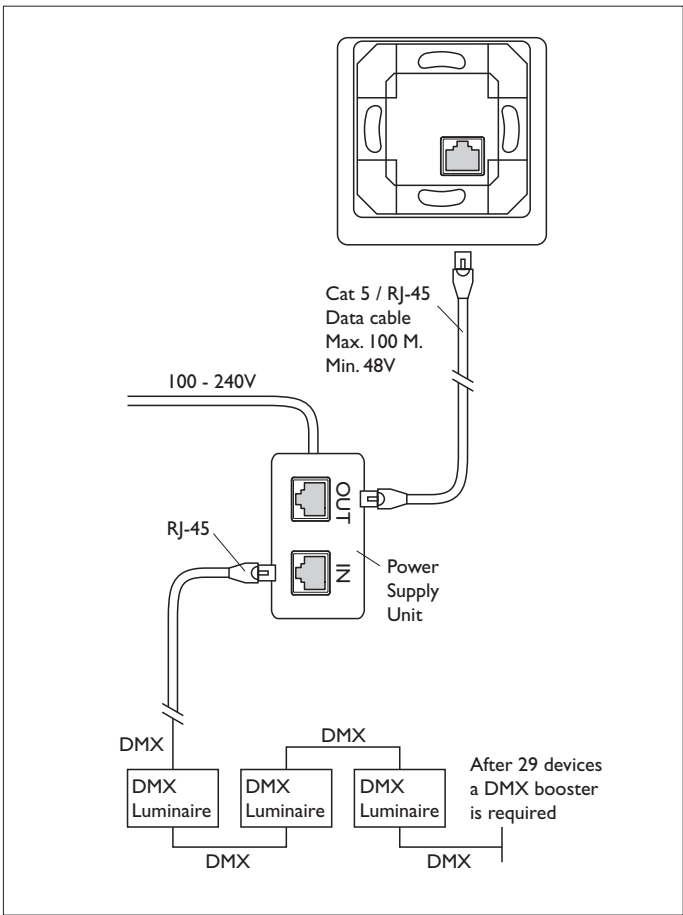
- UID8530 Color Temperature DMX user interface device
- Wall bracket
- Switch caps (2x)
- Quick user guide
- Installation instructions

Switch Caps

Two switch caps are provided with the UID8530 to customize the look of the device to the user's own preference. By rotating the caps, multiple configurations are available, providing total flexibility. The caps can easily be changed using a small screwdriver, as shown in the picture.



Connections



PSU needs to be ordered separately (UIA8550).

Technical data

Environmental conditions

Storage conditions	
Temperature	-25 to +70°C
Relative humidity	+60°C with 95% humidity
Operating conditions	
Temperature	+5 to +50°C
Relative humidity	20% to 85%, no condensation
IP	20
The UID8530 should not be exposed to direct sunlight or to high temperatures and should not be used in damp rooms such as bathrooms.	

Electrical

Power supply input	100 to 240 VAC, 50/60 Hz
Dimensions PSU	140 x 65 x 36 mm
Controller input	48 VDC
	(max. 100 meter cable length between PSU and controller)
	(max. 300 meter between installation and booster)
Power consumption UID & PSU	Active typical <7W
	Active max. <10W
	Standby approx. 5W

Control

Control interface	DMX 512
Control channels	512

Channel (profile)

1 (warm white); 2 (cool white) repeated until 422
423 (color temperature), 424 (intensity) repeated until 512

Connections

AC power (power supply)	IEC 3-pin
DC power in / DMX data out	RJ-45

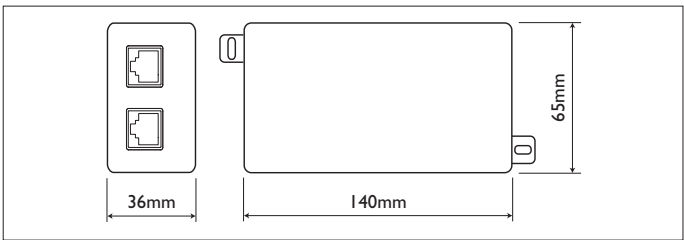
Approvals

Power supply	cUL/UL, CE, TUV, FCC
Controller	CE, UL E230727

DMX pin assignment

RJ-45	Pin Function
7, 8	GND (connected to ground)
2	Data -
1	Data +
3, 4, 5, 6	not used

Best performance is achieved when using a shielded Ethernet cable.



Dimensions Power Supply Unit (UIA8550)

Packing data

Type	Box dimensions (mm)	Qty	Material	Weight (Kg)	
				net	gross
UID8530 Color Temperature DMX	113x113x61	1	cardboard	0.108	0.193

Ordering Data

Type	MOQ	Ordering number	EAN code level 1	EAN code level 3	EOC
UID8530 Color Temperature DMX	1	9137 003 35403	8727900 873504	8727900 873511	873504 00
UIA8550 ToBeTouched PSU	1	9137 003 38603	8727900 886832	8727900 886849	886832 00

