

# PRE—INSTALLATION INSTRUCTIONS

## 300EM – EMERGENCY WALL MOUNT CYLINDER

---

### IMPORTANT SAFEGUARDS

1. READ AND FOLLOW ALL SAFETY INSTRUCTIONS.
  2. DO NOT MOUNT NEAR GAS OR ELECTRIC HEATERS.
  3. EQUIPMENT SHOULD BE MOUNTED IN LOCATIONS AND AT HEIGHTS WHERE IT WILL NOT READILY BE SUBJECTED TO TAMPERING BY UNAUTHORIZED PERSONNEL.
  4. THE USE OF ACCESSORY EQUIPMENT NOT RECOMMENDED BY THE MANUFACTURER MAY CAUSE AN UNSAFE CONDITION.
  5. DO NOT USE THIS EQUIPMENT FOR OTHER THAN INTENDED USE.
- 

### NOTICE

IF THIS LUMINAIRE IS PART OF THE FACILITY'S EMERGENCY LIGHTING SYSTEM AND IS INTENDED TO ILLUMINATE THE MEANS OF EGRESS AS REQUIRED BY THE LIFE SAFETY CODE OR INTERNATIONAL BUILDING CODE, THE LUMINAIRE SHOULD BE ORIENTATED TO ENSURE THAT SUFFICIENT LIGHT FOR THE PURPOSE REACHES THE FLOOR.

---

CAUTION – ALL SERVICING SHOULD BE PERFORMED BY QUALIFIED PERSONNEL.

---

SAVE THESE INSTRUCTIONS

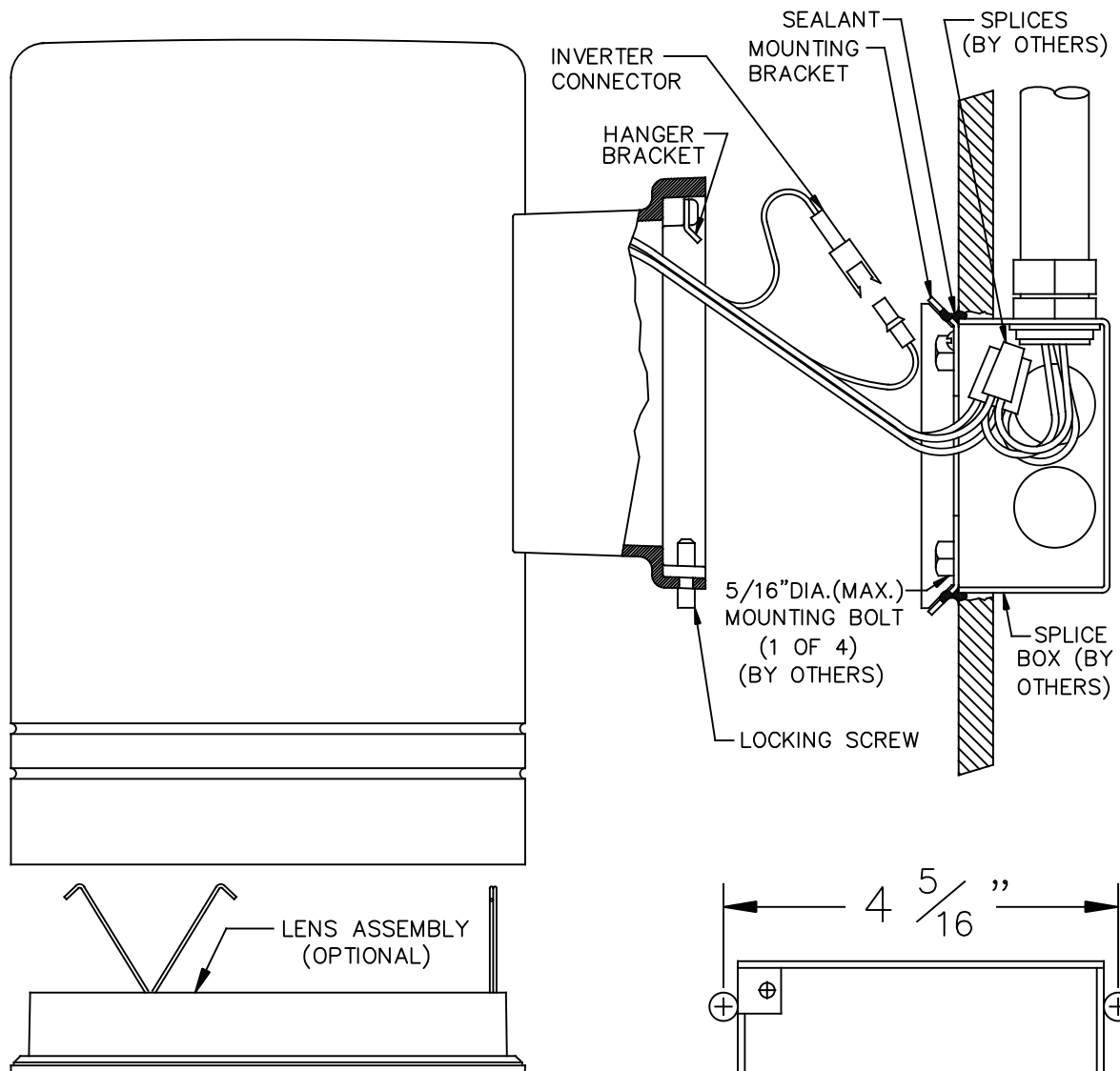
---

# INSTALLATION INSTRUCTIONS

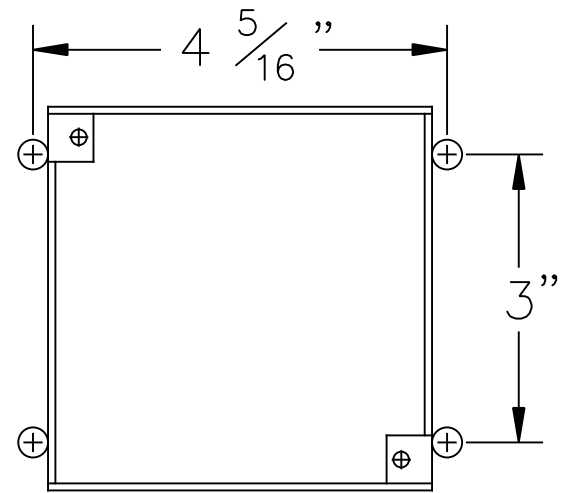
## 300EM – EMERGENCY WALL MOUNT CYLINDER

IMPORTANT: READ ALL INSTRUCTIONS BEFORE PERFORMING ANY WORK.  
BE SURE ALL POWER IS OFF PRIOR TO INSTALLING LUMINAIRE.

WARNING: LUMINAIRE MUST BE GROUNDED IN ACCORDANCE WITH  
APPROPRIATE CODES. FAILURE TO DO SO MAY RESULT IN  
SERIOUS INJURY.



NOTE:  
MOUNTING BRACKET IS SECURED TO  
WALL WITH 5/16" (MAX.) DIAMETER  
BOLTS (BY OTHERS). STRUCTURAL  
MEMBERS MUST BE PRESENT IN  
WALL TO ACCEPT BOLTS.

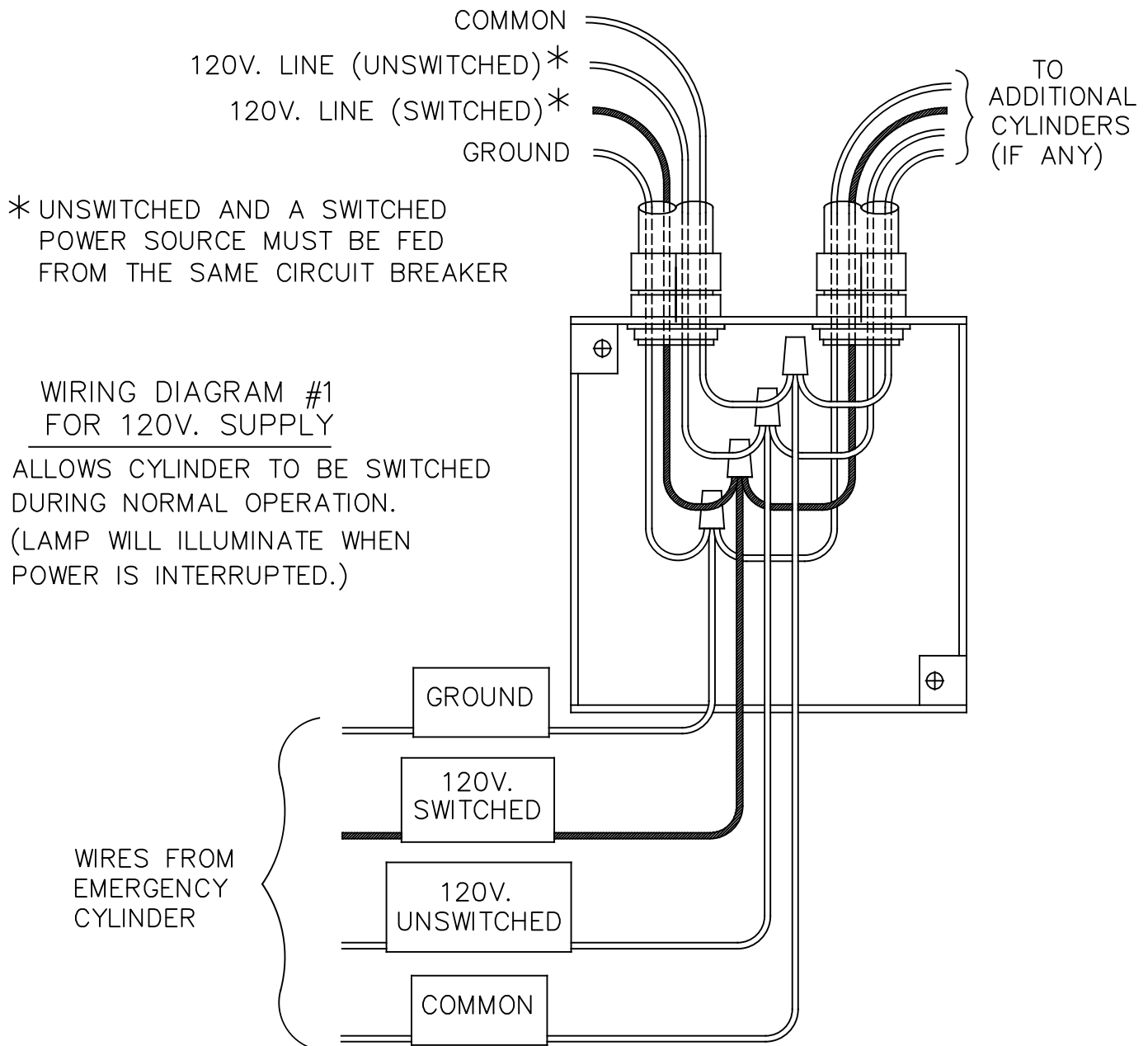


MOUNTING BOLT PATTERN

# INSTALLATION INSTRUCTIONS

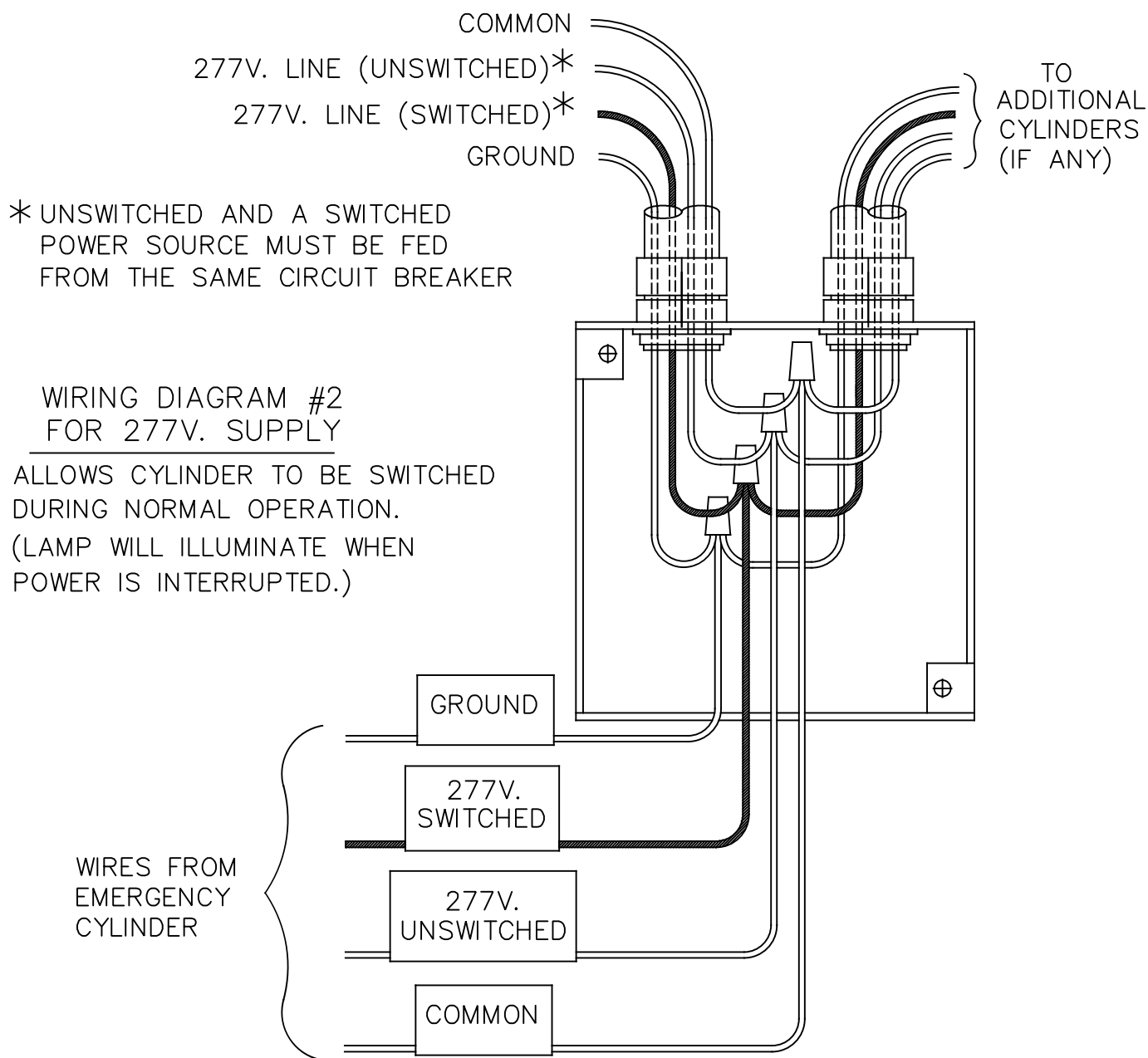
## 300EM – EMERGENCY WALL MOUNT CYLINDER

1. APPLY A BEAD OF SEALANT ON WALL AROUND SPLICE BOX OPENING AND AROUND MOUNTING HOLES. WHEN USING A FOUR INCH SQUARE BOX (SHOWN), FILL GAP BETWEEN WALL OPENING AND SPLICE BOX WITH SEALANT. APPLY SEALANT TO THE TOP INSIDE CORNERS OF THE MOUNTING BRACKET AND TO THE THREE UNUSED HOLES IN THE TOP ANGLED FLAP OF THIS BRACKET.
2. PLACE MOUNTING BRACKET OVER SPLICE BOX, LEVEL AND SECURE TO WALL WITH 5/16" (MAX.) BOLTS (BY OTHERS). NOTE: SPLICE BOX SCREWS MAY BE USED TO HOLD THE MOUNTING BRACKET IN PLACE WHILE THE BOLTS ARE BEING INSTALLED.
3. MAKE ELECTRICAL CONNECTIONS. SEE WIRING DIAGRAMS 1 THRU 4.



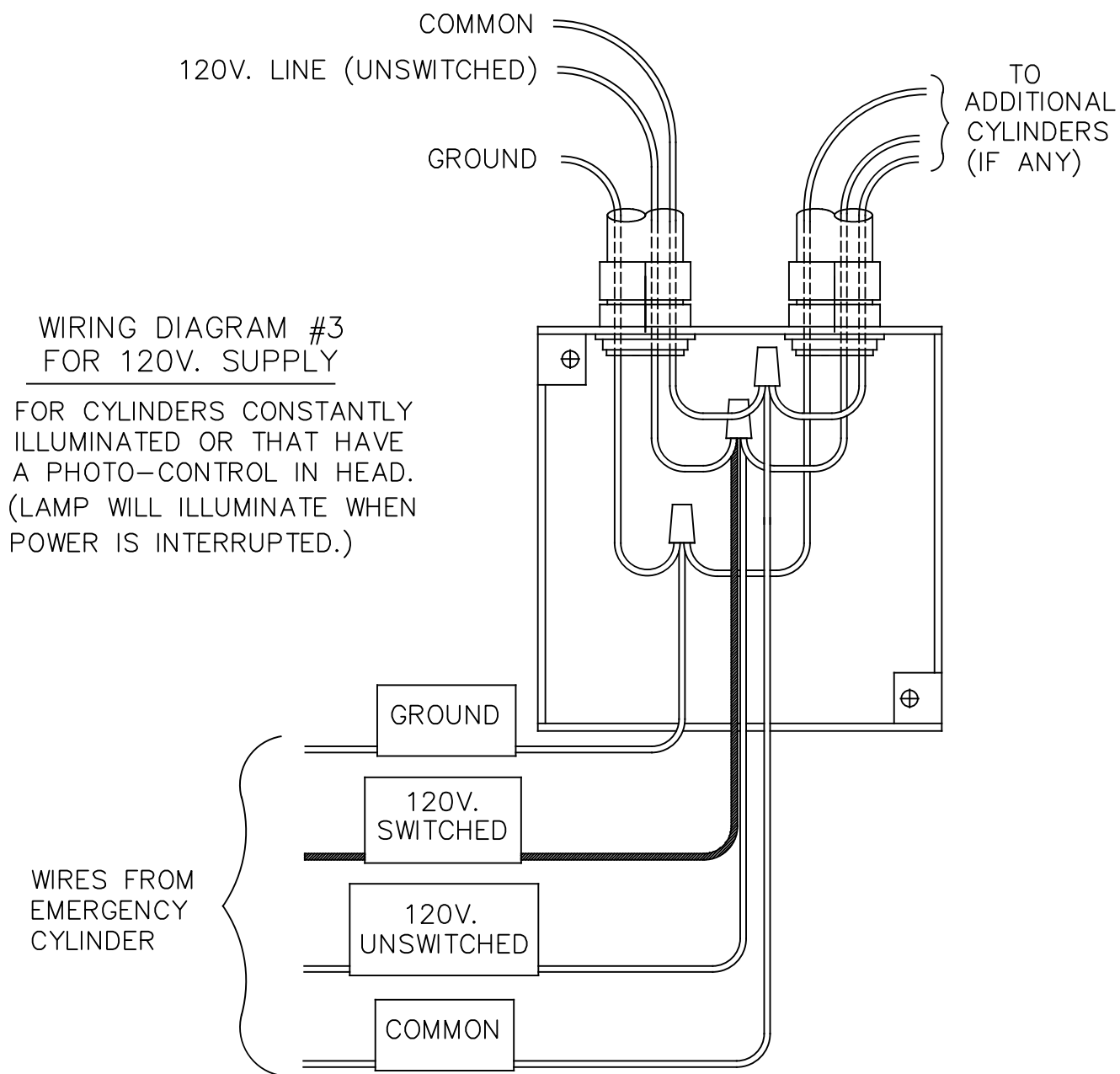
# INSTALLATION INSTRUCTIONS

## 300EM – EMERGENCY WALL MOUNT CYLINDER



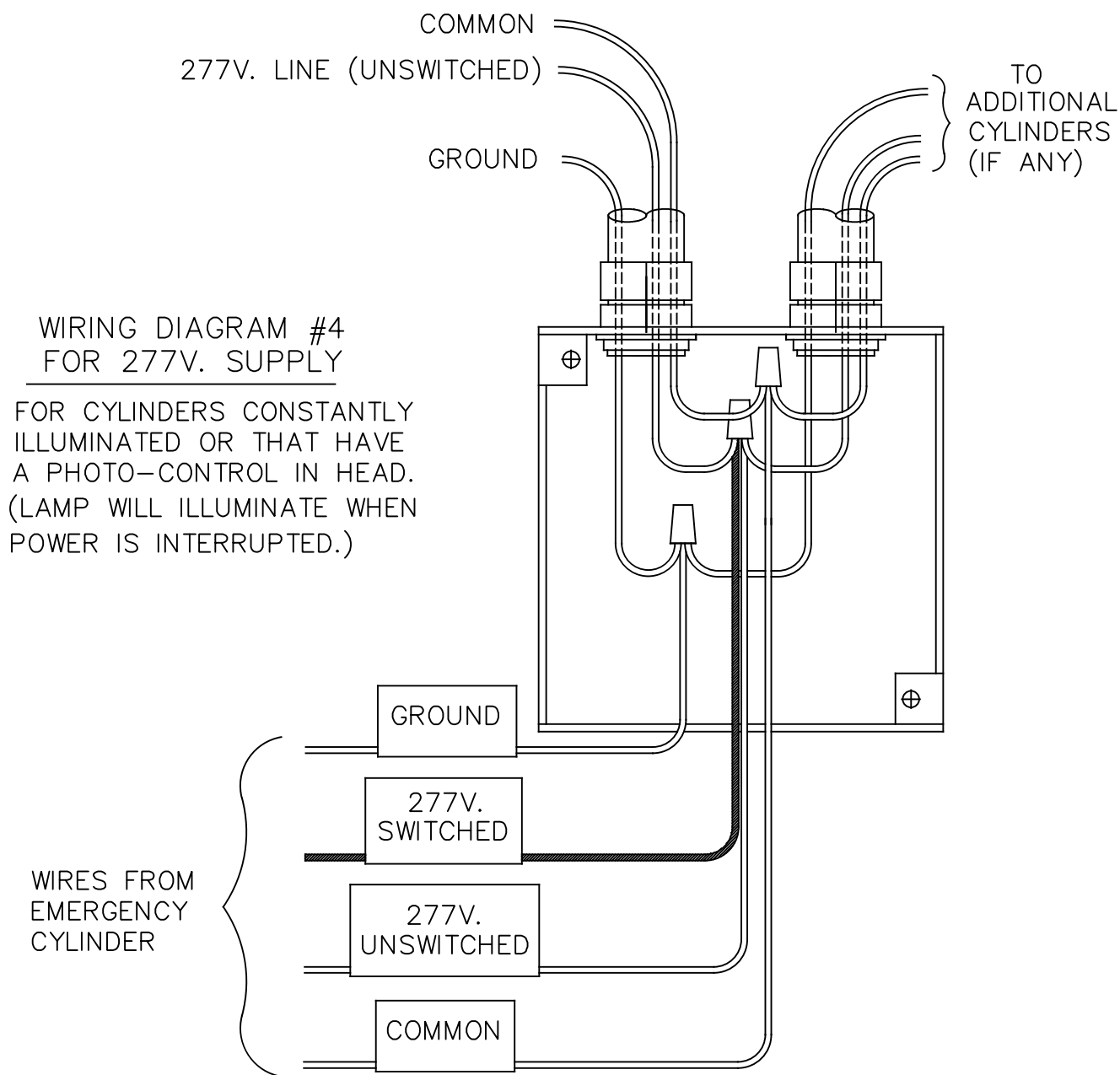
# INSTALLATION INSTRUCTIONS

## 300EM – EMERGENCY WALL MOUNT CYLINDER



# INSTALLATION INSTRUCTIONS

## 300EM – EMERGENCY WALL MOUNT CYLINDER



# INSTALLATION INSTRUCTIONS

## 300EM – EMERGENCY WALL MOUNT CYLINDER

---

4. AFTER ALL CONNECTIONS ARE MADE, JOIN THE INVERTER CONNECTOR. PLACE THE JOINED INVERTER CONNECTOR INTO THE SPACE ABOVE THE BATTERY. PLACE SPLICES AND EXCESS WIRE IN SPLICE BOX. CAREFULLY ENGAGE HANGER BRACKET TO MOUNTING BRACKET BEING CAREFUL NOT TO PINCH WIRES. ALLOW CYLINDER TO REST AGAINST WALL. TIGHTEN LOCKING SCREWS.
5. IN LENSED UNITS, REMOVE LENS ASSEMBLY. INSTALL LAMP AND REPLACE LENS ASSEMBLY. (TYPICAL LENS ASSEMBLY IS SHOWN FOR REFERENCE ONLY) APPLY AC POWER.

### TESTING EMERGENCY LUMINAIRE

1. WITH POWER APPLIED TO THE UNSWITCHED LINE, THE RED CHARGING LAMP SUSPENDED NEXT TO THE FLUORESCENT LAMP SHOULD BE ILLUMINATED.
2. AFTER ONE HOUR OF CHARGING, A SHORT TERM TEST CAN BE DONE BY PRESSING THE "PRESS TO TEST" BUTTON. THE FLUORESCENT LAMP SHOULD ILLUMINATE AT REDUCED OUTPUT.
3. AFTER 24 HOURS OF OPERATION, A LONG TERM TEST CAN BE DONE BY REMOVING ALL POWER. THE FLUORESCENT LAMP SHOULD OPERATE AT REDUCED OUTPUT FOR AT LEAST 90 MINUTES.

