

**PHILIPS**

UID8600  
1-10V Dimmer



## Specification Sheet

# Rotary electronic potentiometer with push button On/Off switch

- Combined On/Off switch and rotary control dimmer
- To be used with 1-10 V electronic HF regulating ballasts or LED when combined with other control gear
- Suited for mounting in a standardized DIN 49073-1 flush mounted socket
- Product frame and rotary knob color similar to RAL9016



# UID8600

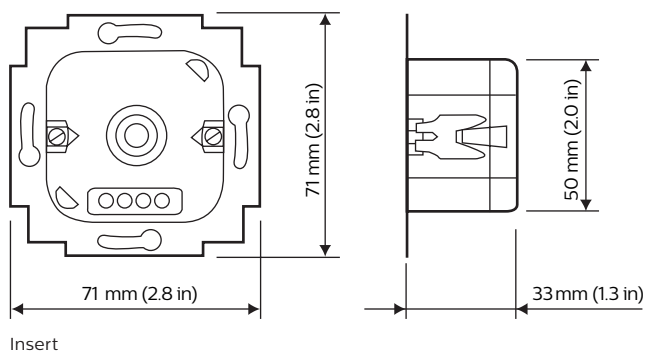
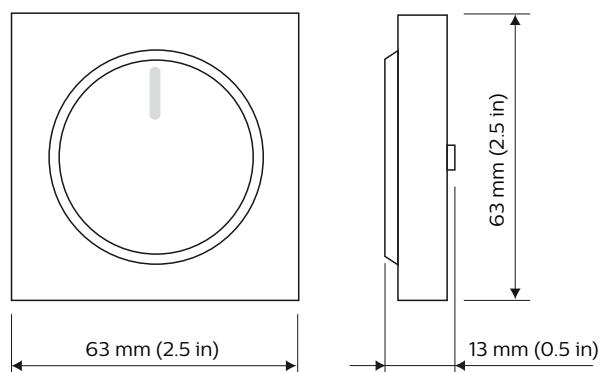
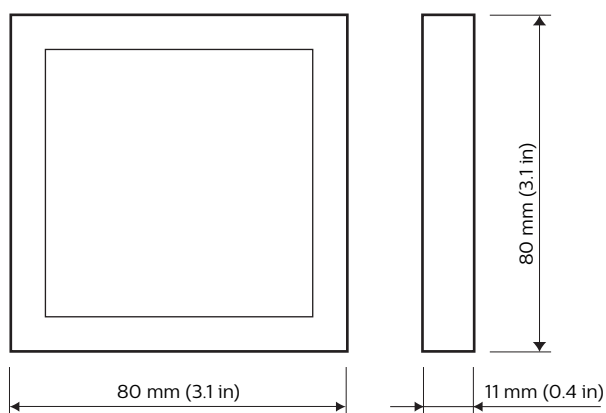
## Typical application areas

- General indoor dimming with 1-10 V High Frequency ballasts

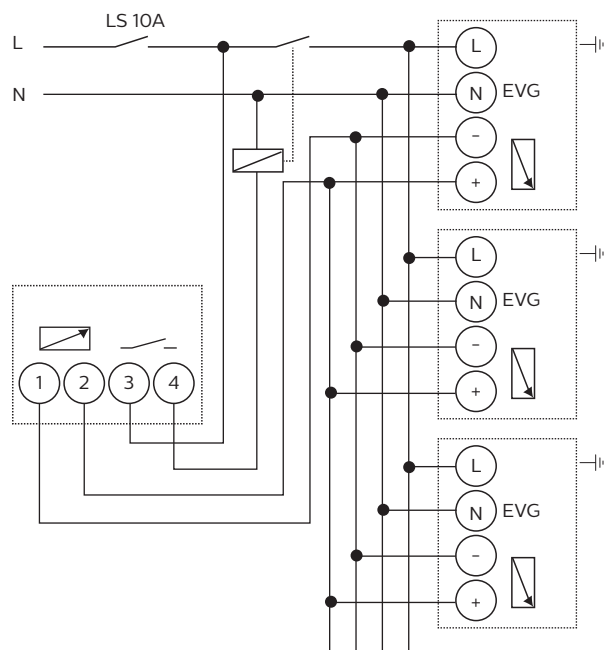
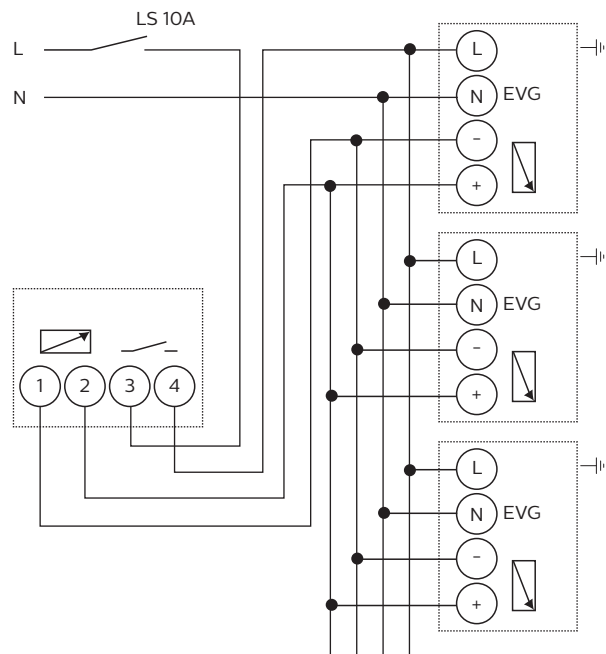
### Note

- When used in combination with HF ballasts without inrush current limitation an external contactor must be used
- Keep low & high voltage wiring separated or use high voltage wiring only

## Dimensional drawing



## Connection examples



# Specifications

## Technical data

Supply	230 Vac $\pm$ 10%, 50 to 60 Hz
Dimming power	700 VA
Protection	IP20
Overall size (l x w x h)	80 x 80 x 58 mm (3.1 x 3.1 x 2.3 in)
Operating temperature range	0 to 35 °C
Control voltage	1 - 10 Vdc
Control current	I <sub>MAX</sub> 50 mA
Switching current	I <sub>MAX</sub> 50 mA
Inrush current	$\leq$ 100 A / 10 ms

## Ordering data

Description	12nc part number	EAN 1	EOC
UID8600 1-10V Dimmer	9137 003 55603	8718291 675556	675556 00

© 2019 Signify Holding. All rights reserved. Specifications are subject to change without notice. No representation or warranty as to the accuracy or completeness of the information included herein is given and any liability for any action in reliance thereon is disclaimed. Philips and the Philips Shield Emblem are registered trademarks of Koninklijke Philips N.V. All other trademarks are owned by Signify Holding or their respective owners.



[www.philips.com/lighting](http://www.philips.com/lighting)