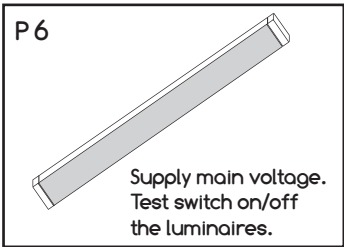
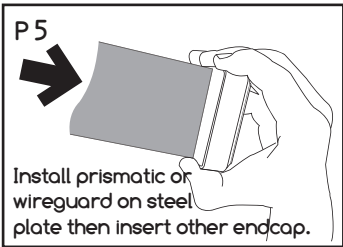
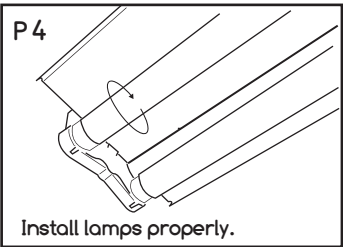
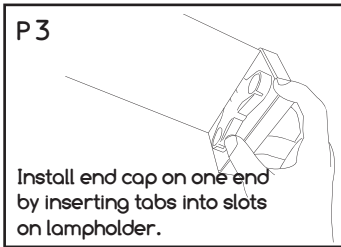
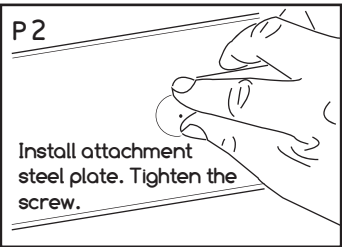
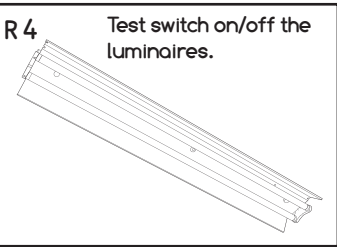
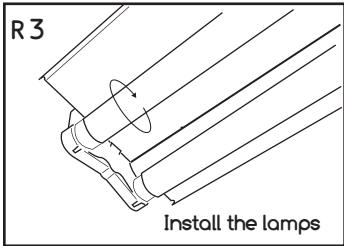
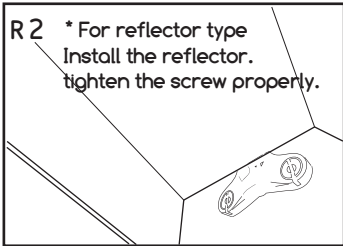
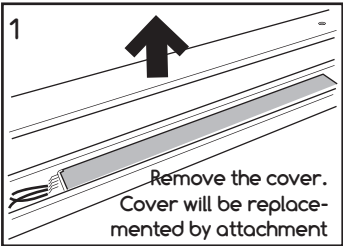


Product name : GMS150, GMS151  
Accessories for TMS150, TMS151  
Reflector, Prismatic or Wireguard  
For : TMS150, TMS151

Customer Service Contact :  
Ph : +64 09 355 4700  
Free Ph : +64 0800 4 LIGHT  
Free Fax : +64 0800 160 875  
www.lighting.philips.co.nz



- The luminaires must be switched off before install the accessories.
- For Reflector installation instruction see picture 1, R2, R3 and R4.
- For Prismatic and Wireguard installation instruction see picture 1, P2, P3, P4, P5 and P6.



4499 180 80551