

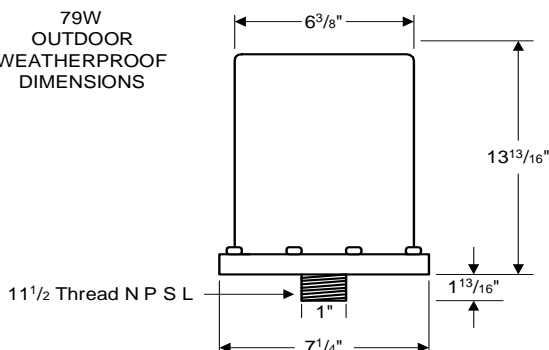
PHILIPS ADVANCE

High Pressure Sodium Lamp Ballast

Catalog Number 79W8493
For 400W S51
60 Hz CWA
Status: Active

DIMENSIONS AND DATA

79W
OUTDOOR
WEATHERPROOF
DIMENSIONS



| | | | | | |
|--|------------------|-----------|-----------|-----------|---|
| INPUT VOLTS | 120 | 208 | 240 | 277 | |
| CIRCUIT TYPE | CWA | | | | |
| POWER FACTOR (min) | 90% | | | | |
| REGULATION | | | | | |
| Line Volts | ±10% | | | | |
| Lamp Watts | WITHIN TRAPEZOID | | | | |
| LINE CURRENT (Amps) | | | | | |
| Operating..... | 3.80 | 2.20 | 1.90 | 1.70 | |
| Open Circuit..... | 2.00 | 1.20 | 0.95 | 0.85 | |
| Starting..... | 3.30 | 1.80 | 1.50 | 1.40 | |
| UL TEMPERATURE RATINGS | | | | | |
| Insulation Class | H(180°C) | | | | |
| Coil Temperature Code | 1029 | | | | |
| MIN. AMBIENT STARTING TEMP. | -40°F or -40°C | | | | |
| NOM. OPEN CIRCUIT VOLTAGE | 190 | | | | |
| INPUT VOLTAGE AT LAMP DROPOUT..... | 90 | 156 | 180 | 208 | |
| INPUT WATTS | 464 | | | | |
| RECOMMENDED FUSE (Amps)..... | 10 | 8 | 5 | 5 | |
| CORE and COIL | | | | | |
| Dimension (A) | | | | | |
| Dimension (B) | | | | | |
| Weight (lbs.) | 30 | | | | |
| Lead Lengths | 10" | | | | |
| CAPACITOR REQUIREMENT | | | | | |
| Microfarads | | | | | |
| Volts (min.) | | | | | |
| Fault Current Withstand (amps) | | | | | |
| 60 Hz TEST PROCEDURES (Refer to Advance Test Procedure for HID Ballasts - Form 1270) | | | | | |
| High Potential Test (Volts) | | | | | |
| 1 minute | 2000 | | | | |
| 2 seconds | 2500 | | | | |
| Open Circuit Voltage Test (Volts) | 170-210 | | | | |
| Short-Circuit Current Test (Amps) | | | | | |
| Secondary Current | 6.00-7.40 | | | | |
| Input Current..... | 2.40-3.60 | 1.40-2.10 | 1.20-1.80 | 1.00-1.55 | - |

Capacitor:

The capacitor is included as part of the potted assembly.



Wiring Diagram:

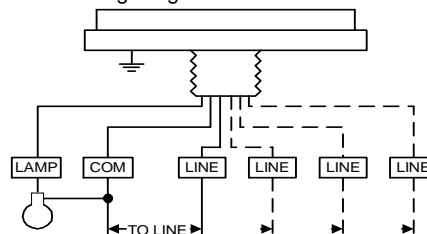


Fig. OW-2

Ordering Information

Order Suffix

Description

Ignitor:

IN CAN

The ignitor is included as part of the potted assembly.

Data is based upon tests performed by Philips Lighting Electronic N.A. in a controlled environment and representative of relative performance. Actual performance can vary depending on operating conditions. Specifications are subject to change without notice.

Philips Lighting Electronic N.A.

10275 West Higgins Road · Rosemont, IL 60018 · Tel:800-322-2086 Fax:888-432-1882
Customer Support/ Technical Service:800-372-3331 · OEM Support: 866-915-5886

04/14/05