

# PHILIPS

## Beyond table lamp

Hue White and Colour  
Ambiance

LED integrated

White

Smart control with Hue Bridge\*

Control with your voice\*



71202/31/PU



## Limitless possibilities

This stylish Philips hue Beyond LED table lamp combines scene-setting mood lighting and warm white task lighting in one. Connects to your home wireless network for instant and complete control of your home lighting from your smart device.

### Limitless possibilities

- Be creative with 16 million colours
- Sync lights with music and films
- Relax, read, concentrate and energise with light recipes
- Installation-free dimming
- Control it your way
- Requires a Philips Hue bridge
- Create your ambience with warm white to cool daylight
- Smart control, home and away
- Set timers for your convenience
- Wake up and go to sleep naturally

### Create light beyond imagination

- LightDuo: two light sources for functional and mood lighting

# Highlights

## Be creative with colours



Play with light and choose from 16 million colours to instantly change the look and atmosphere of your room. Set the scene effortlessly with one touch of a button. Use a favourite photo and relive that special moment with splashes of light. Save your favourite light settings and recall them whenever you want with the tap of a finger

## Sync with music and films



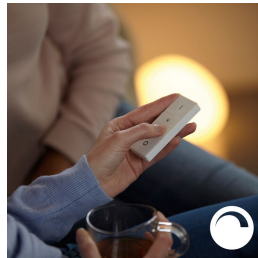
Extend your TV viewing experience to the whole room or sync light to your favourite music and see how light reacts to the rhythm. Download the third-party apps and discover the amazing things you can do with Philips Hue.

## Light for your daily routines



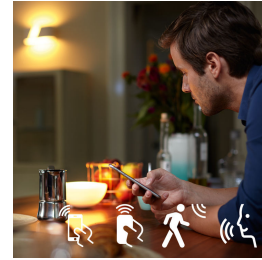
Light influences our mood and behaviour. Philips Hue can help you to customise your daily routines into moments that you can enjoy. Skip your morning coffee and get ready for the day with cool, bright-white daylight that helps to energise your body and mind. Stay focused with finely tuned bright-white light. Or put your feet up and relax with a soft glow of white light for the perfect end to the day.

## Installation-free dimming



Experience guaranteed smooth dimming with Philips Hue. Not too bright. Not too dark. Just right. No need for wires, an electrician or installation

## Control your way



Connect your Philips Hue lights with the bridge and start discovering the endless possibilities. Control your lights from your smartphone or tablet via the Philips Hue app, or add switches to your system to activate your lights. Set timers, notifications, alarms and more for the full Philips Hue experience. Philips Hue even works with Amazon Alexa, Apple Homekit and Google Home to allow you to control your lights with your voice.

## Requires a Philips Hue bridge



Connect your Philips Hue lights with the bridge to control your lights from your smartphone or tablet via the Philips Hue app.

### Create your ambience



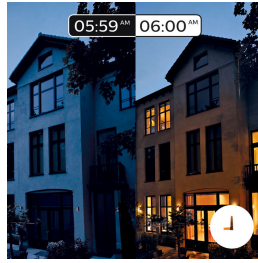
Set the right ambience for any moment and decorate your home with warm to cool white light. Enjoy different styles throughout the year, whether it's the crisp white light reminding you of a spring breeze, the warm white light of a summer sun or the ice-cool daylight of winter. Connection with the Philips Hue bridge is required for this functionality.

### Smart control, home and away



With the Philips Hue iOS and Android apps you can control your lights remotely, from wherever you are. Check if you have forgotten to switch your lights off before you left home, and switch them on if you are working late. Connection with the Philips Hue bridge is required for this functionality.

### Timers for your convenience



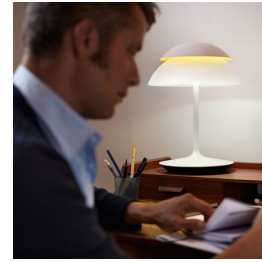
Philips Hue can make it seem like you're at home when you're not, using the schedule function in the Philips Hue app. Set the lights to come on at a pre-set time, so the lights are on when you arrive home. You can even set rooms to light up at different times. And of course, you can let the lights turn off gradually during the night, so you never have to worry whether you've left any lights on. Connection with the Philips Hue bridge is required for this functionality.

### Wake up and go to sleep



Philips Hue will help get you out of bed the way you like to, helping you start your day feeling refreshed. The light brightness increases gradually, mimicking the effect of sunrise and helps you wake up naturally, instead of being woken up by the loud sound of an alarm clock. Start your day the right way. In the evening, the relaxing warm white light helps you to unwind, relax and prepare your body for a good night's sleep. Connection with the Philips Hue bridge required for this functionality.

### Functional and mood lighting



Read and work in harmony with how you feel, whether relaxed, energised or sociable. All through the power of light. Philips Hue beyond has two independent light sources – an uplight and a downlight – so you can create an endless mix of colours and white light. Set functional lighting and add a touch of colour. Or create vibrant scenes and combine different colours to match your mood, whether it's to relax, energise or explore.

# Specifications

## Design and finishing

- Colour: white
- Material: glass

## Extra feature/accessory incl.

- Colour changing (PowerLED): Yes
- Diffused light effect: Yes
- Dimmable: Yes
- On/off switch on article: Yes
- Perfectly suited for creating ambience: Yes
- UK plug included: Yes
- ZigBee Light Link: Yes

## Miscellaneous

- Especially designed for: Living Room and Bedroom, Home office and Study
- Style: Modern
- Type: Table lamp
- EyeComfort: No

## Power consumption

- Energy efficiency label (EEL): Built in LED

## Product dimensions and weight

- Height: 40.4 cm
- Length: 40.4 cm
- Net weight: 2.715 kg
- Width: 29 cm

## Service

- Warranty: 2 year(s)

## Technical specifications

- Lifetime up to: 15,000 h
- Light source equivalent to traditional bulb of: 28 W
- Total lumen output fixture: 300 lm
- Light colour: warm white
- Mains power: 50-60 Hz
- Fixture dimmable: No
- LED: Yes
- Built-in LED: Yes
- Energy class included light source: Built-in LED
- IP code: IP20
- Class of protection: II – double insulated
- Light source replaceable: No

## Packaging dimensions and weight

- EAN/UPC – product: 8718696121894
- Net weight: 2.715 kg
- Gross weight: 3.895 kg
- Length: 0.000 mm
- Width: 0.000 mm
- Material number (12NC): 915004505601



Issue date: 2023-11-08  
Version: 0.432

© 2023 Signify Holding. All rights reserved. Signify does not give any representation or warranty as to the accuracy or completeness of the information included herein and shall not be liable for any action in reliance thereon. The information presented in this document is not intended as any commercial offer and does not form part of any quotation or contract, unless otherwise agreed by Signify. Philips and the Philips Shield Emblem are registered trademarks of Koninklijke Philips N.V.

[www.lighting.philips.com](http://www.lighting.philips.com)