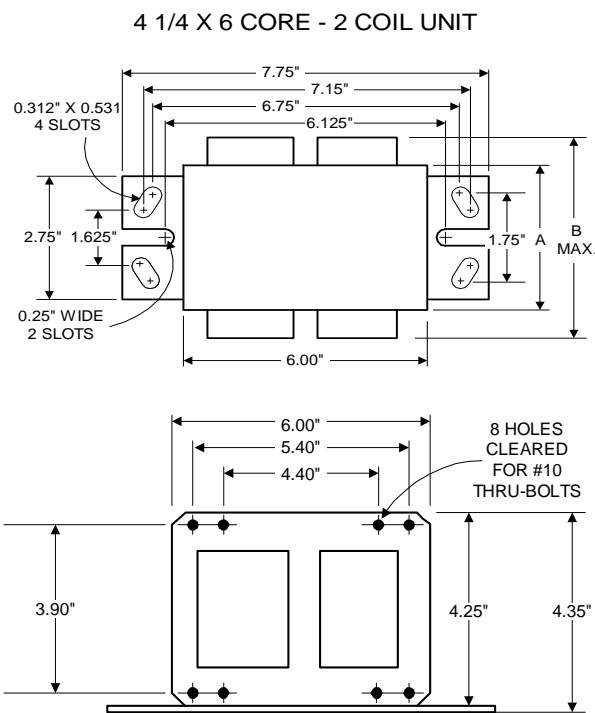


PHILIPS ADVANCE

Metal
Halide
Lamp Ballast

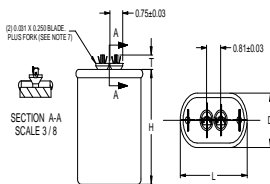
Catalog Number 71A6553
For 1000W M141 (Pulse Start)
60 Hz SUPER-CWA
Status: Active

DIMENSIONS AND DATA



		120	208	240	277	480
INPUT VOLTS						
CIRCUIT TYPE	SUPER-CWA					
POWER FACTOR (min)	96%					
REGULATION						
Line Volts	±10%					
Lamp Watts	±10%					
LINE CURRENT (Amps)						
Operating.....		9.05	5.60	4.70	4.07	2.36
Open Circuit.....		5.16	4.30	3.09	2.61	1.60
Starting.....		6.00	2.82	3.00	2.30	1.53
UL TEMPERATURE RATINGS						
Insulation Class	H(180°C)					
Coil Temperature Code	1029					
MIN. AMBIENT STARTING TEMP.	-30°F or -35°C					
NOM. OPEN CIRCUIT VOLTAGE	426					
INPUT VOLTAGE AT LAMP DROPOUT.....		78	125	150	180	290
INPUT WATTS	1080					
RECOMMENDED FUSE (Amps).....		22	15	12	10	6
CORE and COIL						
Dimension (A)	3.00					
Dimension (B)	4.70					
Weight (lbs.)	22					
Lead Lengths	12"					
CAPACITOR REQUIREMENT						
Microfarads	24.0					
Volts (min.)	480					
Fault Current Withstand (amps)						
60 Hz TEST PROCEDURES (Refer to Advance Test Procedure for HID Ballasts - Form 1270)						
High Potential Test (Volts)						
1 minute	2000					
2 seconds	2500					
Open Circuit Voltage Test (Volts)	383-468					
Short-Circuit Current Test (Amps)						
Secondary Current	4.97-6.08					
Input Current.....		4.35-6.52	2.16-3.24	2.04-3.06	1.80-2.71	1.00-1.51

Capacitor: MD2409-100



Capacitance: 24
Dia/Oval Dim: 1.75
Height: 3.9
Temp Rating: 90°C

Wiring Diagram:

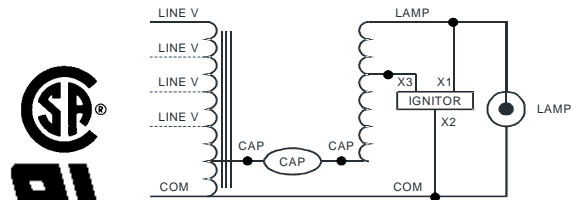


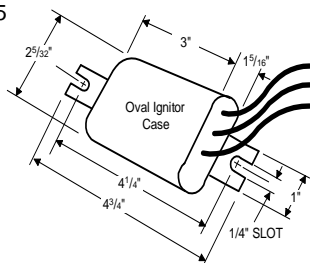
Fig. M5

Ordering Information

Order Suffix	Description
500.	Ballast with Ignitor and Oil Filled Capacitor

Ignitor:

LI572-H5



Ballast to Lamp Distance
(BTL) = 5 feet
Temp Rating: 105°C

Data is based upon tests performed by Philips Lighting Electronic N.A. in a controlled environment and representative of relative performance. Actual performance can vary depending on operating conditions. Specifications are subject to change without notice.

Philips Lighting Electronic N.A.

10275 West Higgins Road · Rosemont, IL 60018 · Tel:800-322-2086 Fax:888-432-1882
Customer Support/ Technical Service:800-372-3331 · OEM Support: 866-915-5886

03/26/13