

# **RECESSED HOUSINGS AND SPLICE BOXES FOR USE WITH BASIC OR ADVENT LYESPAN® TRACK SYSTEMS ONLY**

## **READ AND UNDERSTAND THESE INSTRUCTIONS BEFORE PROCEEDING.**

This fixture is intended for installation in accordance with the National Electrical Code and local regulations. To assure full compliance with local codes and regulations, check with your local electrical inspector before installation. To prevent electrical shock, turn off electricity at fuse box before proceeding.

**Retain these instructions for maintenance reference.**

Lytespan Track is an electrical distribution system designed to support lighting units at any point along its length. When recessed, the track is installed in Housings which may be installed at the end of or between Housings. "L", "T" and "X" Housing/Splice Boxes are used to form patterns with Housings. Housing may be cut in the field.

## **CAUTION:**

- **TURN OFF POWER AT FUSE BOX BEFORE INSTALLING TRACK.**
- **INSTRUCTIONS FOR GROUNDING MUST BE FOLLOWED. FAILURE TO DO SO MAY RESULT IN A HAZARDOUS CONDITION.**
- **USE SOLID WIRE ONLY (NOT STRANDED WIRE) FOR SUPPLY TO TRACK.**
- **DO NOT SUPPLY ADVENT TRACK FROM TWO SEPARATE 120V BRANCH CIRCUITS AS THIS COULD OVERLOAD THE NEUTRAL TRACK CONDUCTOR LEADING TO AN ELECTRICAL SAFETY HAZARD.**
- **OBSERVE POLARITY, WHITE (NEUTRAL) WIRE MUST BE ALONG BEAD (NEUTRAL) SIDE OF TRACK.**
- **FAILURE TO OBSERVE POLARITY MAY RESULT IN POTENTIAL ELECTRICAL HAZARD.**
- **HOUSING MUST BE INSTALLED AND BRANCH CIRCUIT WIRING CONNECTED TO THE HOUSING/SPLICE BOX BEFORE THE CEILING IS COMPLETED.**

## **INSTALLATION OF HOUSINGS AND HOUSING/SPLICE BOXES**

1. When LATHING TABS are to be used to mount HOUSINGS into the ceiling, form LATHING TABS as shown and insert into housings, 3 per side on 4' lengths, 6 per side on 8' lengths.

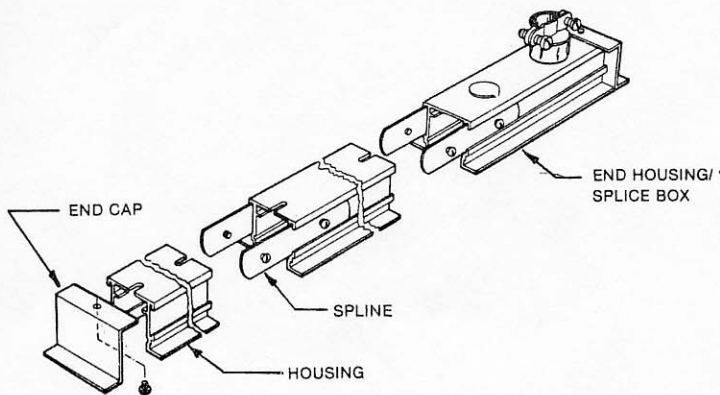
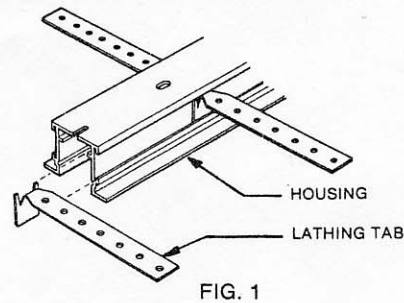


FIG. 2

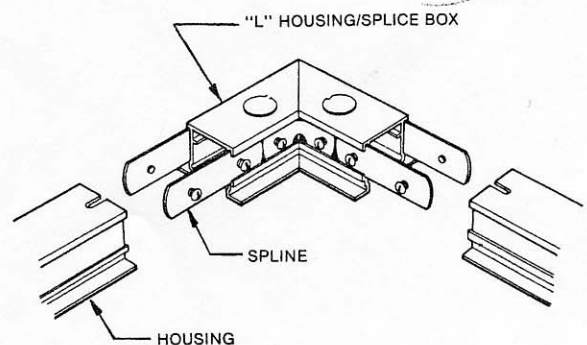


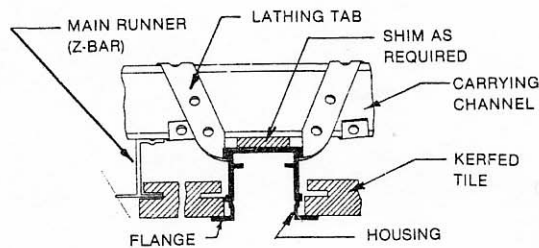
FIG. 3

2. Connect HOUSINGS together and to HOUSING/SPLICE BOXES with SPLINES. Tighten screws on SPLINES. In a straight run, attach END HOUSING/SPLICE BOX to either end of run or between HOUSINGS. Remove END CAP from END HOUSING/SPLICE BOX before mounting between HOUSING.  
To shorten a HOUSING cut it with a hacksaw (preferably in a miter box to ensure a square cut) and assemble cut end to next HOUSING or HOUSING/SPLICE BOX.

3. Attach END CAPS (furnished with HOUSING/SPLICE BOX) to open ends of HOUSINGS.

4A. MOUNTING HOUSINGS INTO CEILING WITH LATHING TABS

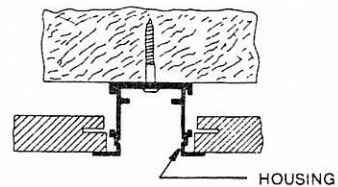
Fasten LATHING TABS to supporting ceiling members. In poured concrete LATHING TABS may be tied to reinforcing rods. Set HOUSINGS so that FLANGES overlap finished ceiling. Ceiling must not protrude below flanges.



SUSPENDED TILE CEILING  
FIG. 7

4B. DIRECT MOUNTING HOUSINGS INTO CEILING

Mount as shown through holes in top of HOUSINGS. Set HOUSINGS so that flanges will overlap finished ceiling.



TILE OR PLASTER BOARD CEILING  
FIG. 8

5. Attach branch circuit wiring to CONDUIT CONNECTOR on END HOUSING/SPLICE BOX. Allow 10" leads for connection to track. When power feed is to "L", "T" or "X" HOUSING/SPLICE BOX, remove K.O. from top of splice box and attach CONDUIT CONNECTOR (not provided).

Extra K.O.'s are provided on HOUSING/SPLICE BOXES to permit separate power feeds or switch legs.

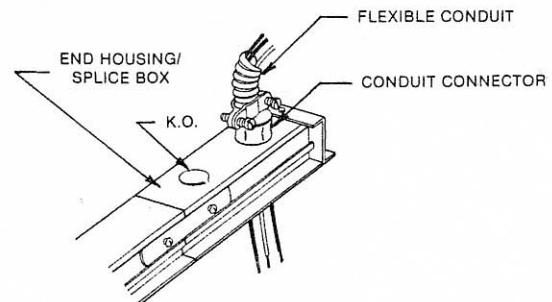
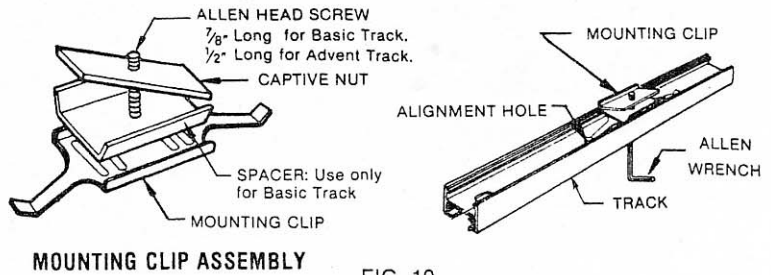


FIG. 9

Each straight run of track is started with an Individual Track and continued with Joiner Tracks. To cut the track, see Instruction Sheet supplied with track.

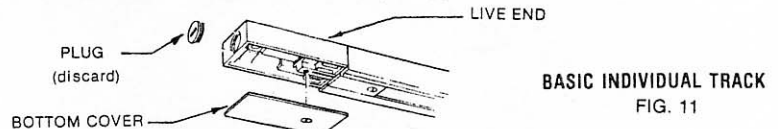
## ASSEMBLE MOUNTING CLIPS TO TRACK

1. Prepare MOUNTING CLIP ASSEMBLIES as shown.
2. Remove DEAD END COVER (Fig. 13) from INDIVIDUAL TRACK. Insert MOUNTING CLIPS into open end of track and slide along track until ends of clips engage ALIGNMENT HOLES in track. Check that allen head screw lines up with hole in track.  
**NOTE:** Use two MOUNTING CLIP ASSEMBLIES for a 4' track, three for an 8' track.

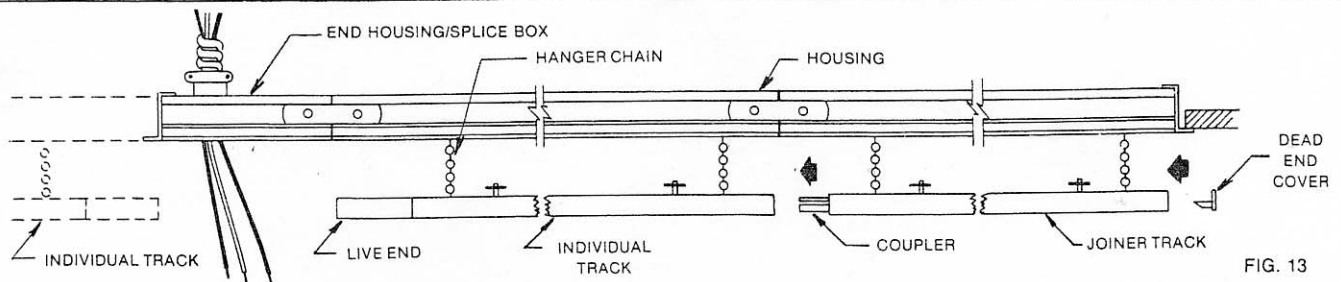
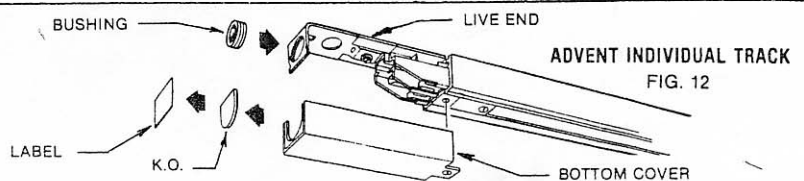


## INSTALLING TRACK INTO A SINGLE HOUSING OR A STRAIGHT RUN OF HOUSINGS

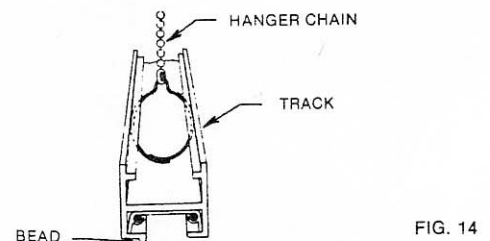
- 1A. BASIC TRACK: Unscrew plug and BOTTOM COVER from LIVE END.



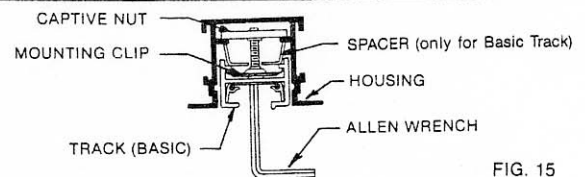
- 1B. ADVENT TRACK: Unscrew BOTTOM COVER, remove LIGHTOLIER label and break off K.O. Thread BUSHING (furnished with HOUSING/SPLICE BOX) into LIVE END.



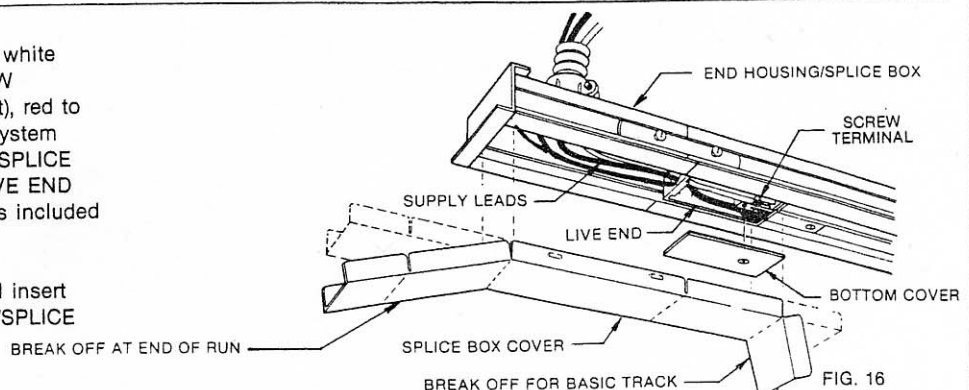
2. Attach track to HANGER CHAINS in HOUSINGS starting with the INDIVIDUAL TRACK next to the END HOUSING/SPLICE BOX and continuing with JOINER TRACKS. Make sure track BEAD is on the same side of all track units in run.
3. Plug track units together, tighten screws in COUPLER(s) and insert DEAD END COVER into end of run.



4. Insert track into HOUSINGS and tighten screws in MOUNTING CLIPS with ALLEN WRENCH to lock track in place.

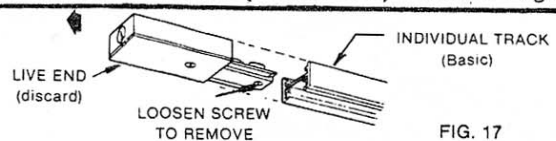


5. Pass supply leads into LIVE END and connect to SCREW TERMINALS: white to white SCREW TERMINAL, black to brass SCREW TERMINAL (lower brass terminal in Advent), red to upper brass SCREW TERMINAL (Advent system only), ground to pigtail in END HOUSING/SPLICE BOX and GREEN GROUND SCREW in LIVE END (wrap wire around screw). (See instructions included with track IS:6020 or IS:6121).
6. Fasten BOTTOM COVER to LIVE END and insert SPLICE BOX COVER into END HOUSING/SPLICE BOX.

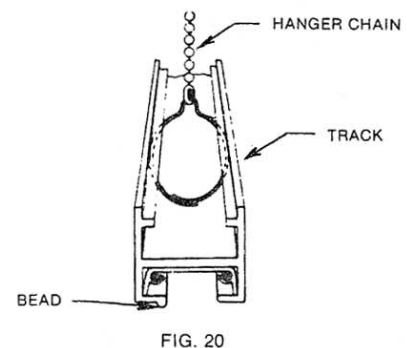
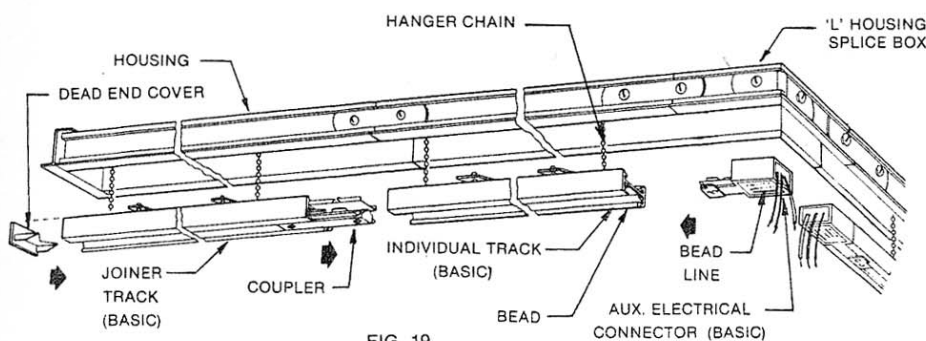
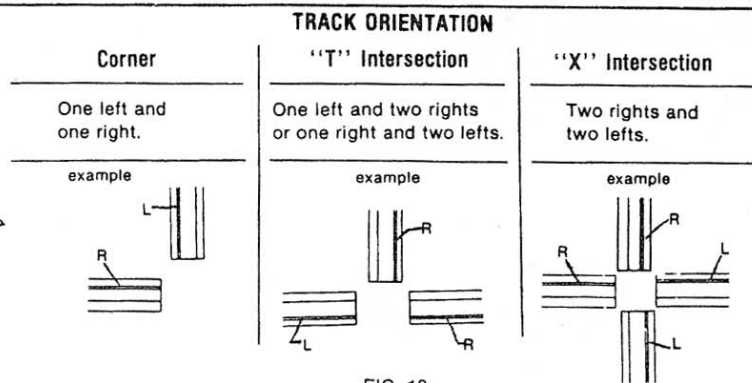
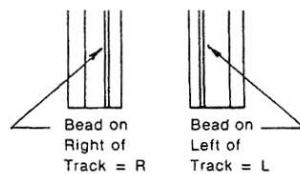


## INSTALLING TRACK INTO HOUSINGS IN PATTERNS

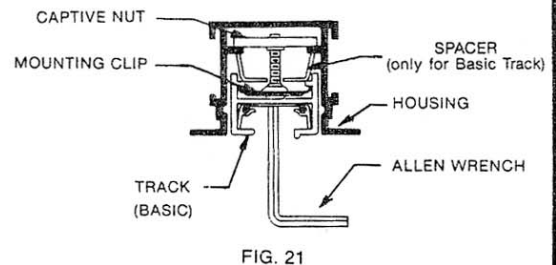
1. Remove LIVE END from INDIVIDUAL TRACKS.



2. Lay out the track per the layout of the HOUSINGS following the track orientation shown in Fig. 18. Note that each straight run of track consists of an INDIVIDUAL PLUS JOINERS.



3. Attach track units to HANGER CHAINS in HOUSINGS following the track layout. Make sure track BEAD is on the same side of all track units in each straight run of track.
4. Plug track units together in each straight run of track and tighten screws in COUPLERS.
5. Insert AUX. ELECTRICAL CONNECTORS into track at corners and intersections. Insert DEAD END COVERS into ends of track not adjacent to corners and intersections.
6. Insert track into HOUSINGS and tighten screws in MOUNTING CLIPS with ALLEN WRENCH to lock track in place.



7. Splice leads from AUX. ELECTRICAL CONNECTORS to supply leads (for power feed) or to each other (for power continuity), following color code; white to white, black to black and for ADVENT, red to red. Green to green and green pigtail from HOUSING/ SPLICE BOX. Cap unused leads from AUX. ELECTRICAL CONNECTORS. Connect GROUND WIRE to GREEN SCREW in connector.
8. Push leads into HOUSING/SPLICE BOXES and insert HOUSING/SPLICE BOX COVERS into SPLICE BOXES.

