

PHILIPS
Stonco

Garage &
Canopy



Compact & efficient, built to last

The **Philips Stonco LED Garage and Canopy** light is slim and durable with a light-weight design, and provides you with a visually appealing lighting experience.

This luminaire can be surface mounted directly to the ceiling or pendant mounted using rigid conduit. Its light-weight design with quick and easy mounting plate allows simple installation and hands-free wiring. Whether it's new construction, or a retrofit installation, the Garage and Canopy fixture will provide years of trouble free operation and keep you on budget.

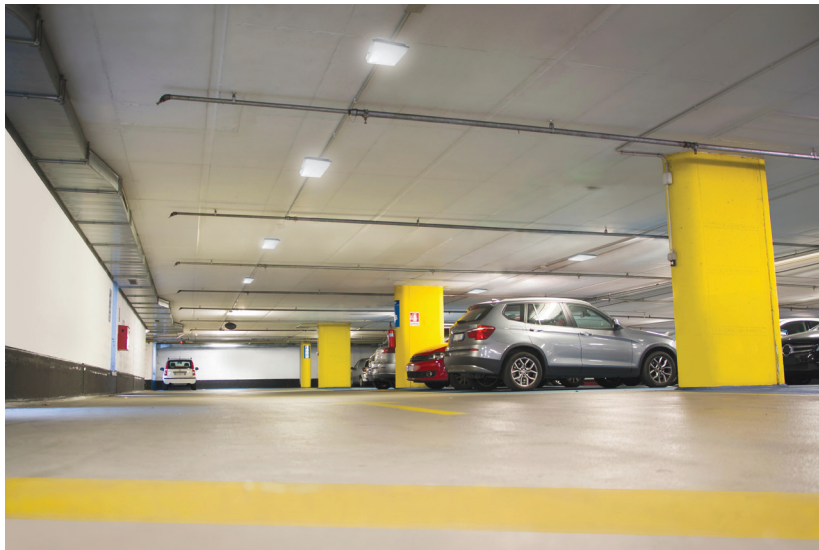
A perfect solution to replace up to 100W HID luminaires with the added benefit of low maintenance*.

*Based on comparison between 100W PSMH luminaires and GC57-NW-G1-SM-5-8-BZ per delivered lumens and in-situ application layout comparisons.

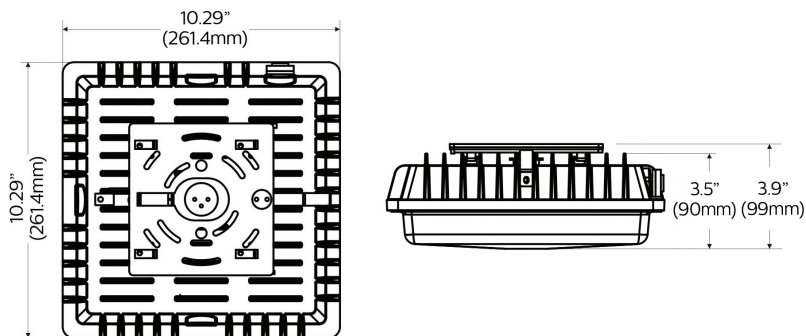


Garage & Canopy LED

GC40/GC57





- Cost-effective and efficient lighting for parking garages, covered walkways and canopies.
- Great choice for new construction or retrofit installation.
- Slim and compact design.
- Durable, weather-tight IP65 rated construction with a rugged, UV stabilized, frosted lens.
- Easy to install with the integral quick-mount plate, or pendant mount with 3/4" rigid conduit.
- 5 year limited warranty.



Ordering guide

example: GC57-NW-G1-SM-5-8-BZ

Luminaire	LED Color	Generation	Mounting	Distribution	Voltage	Finish
	NW	G1	SM	5		BZ
GC40 Garage & Canopy LED 40W	NW Neutral White 4000K, 70CRI	G1 Generation 1	SM Surface Mount	5 Type 5 Symmetric	8 120-277VAC	BZ Bronze
GC57 Garage & Canopy LED 57W						

Performance data

Catalog Code	Lumens
GC40-NW-G1-SM-5-8-BZ	4735
GC57-NW-G1-SM-5-8-BZ	6322

© 2017 Philips Lighting Holding B.V. All rights reserved.
Philips reserves the right to make changes in specifications and/or to discontinue any product at any time without notice or obligation and will not be liable for any consequences resulting from the use of this publication.
philips.com/luminaires



Philips Lighting North America Corporation
200 Franklin Square Drive, Somerset, NJ 08873
Tel. 855-486-2216

Philips Lighting Canada Ltd.
281 Hillmount Rd, Markham, ON, Canada L6C 2S3
Tel. 800-668-9008