

# INSTALLATION INSTRUCTIONS

**PHILIPS**



IMPORTANT: READ ALL INSTRUCTIONS BEFORE PERFORMING ANY WORK.  
BE SURE ALL POWER IS OFF PRIOR TO INSTALLING LUMINAIRE.

WARNING: LUMINAIRE MUST BE GROUNDED IN ACCORDANCE WITH APPROPRIATE CODES. FAILURE TO DO SO MAY RESULT IN SERIOUS INJURY.

**NOTE:**

COLUMN ADAPTOR/SPLICE BOX IS SUITABLE FOR USE WITH NON-COMBUSTABLE COLUMNS ONLY.

1. IF SURFACE CONDUIT IS TO BE USED, REMOVE PIPE PLUGS FROM COLUMN ADAPTOR. INSTALL FITTINGS (BY OTHERS), MAKING SURE THEY ARE SEALED IF THEY ARE TO BE LOCATED ON THE TOP OF THE ADAPTOR (AS SHOWN IN FIG. 1).

IF CONDUIT OR SPLICE BOX IS RECESSED, REMOVE AND DISCARD BACK COVER PLATE AND REFER TO FIG. 2.

2. APPLY A BEAD OF SEALANT (BY OTHERS) TO THE BACK OF THE ADAPTOR ADJACENT TO THE TOP AND SIDE EDGES. PLACE THE ADAPTOR AGAINST THE COLUMN AND SECURE WITH FOUR 5/16" BOLTS (BY OTHERS).

3. INSTALL FRONT COVER PLATE (SUPPLIED) TO THE FRONT OF THE ADAPTOR WITH A BEAD OF SEALANT (BY OTHERS) ON BOTH SIDES.

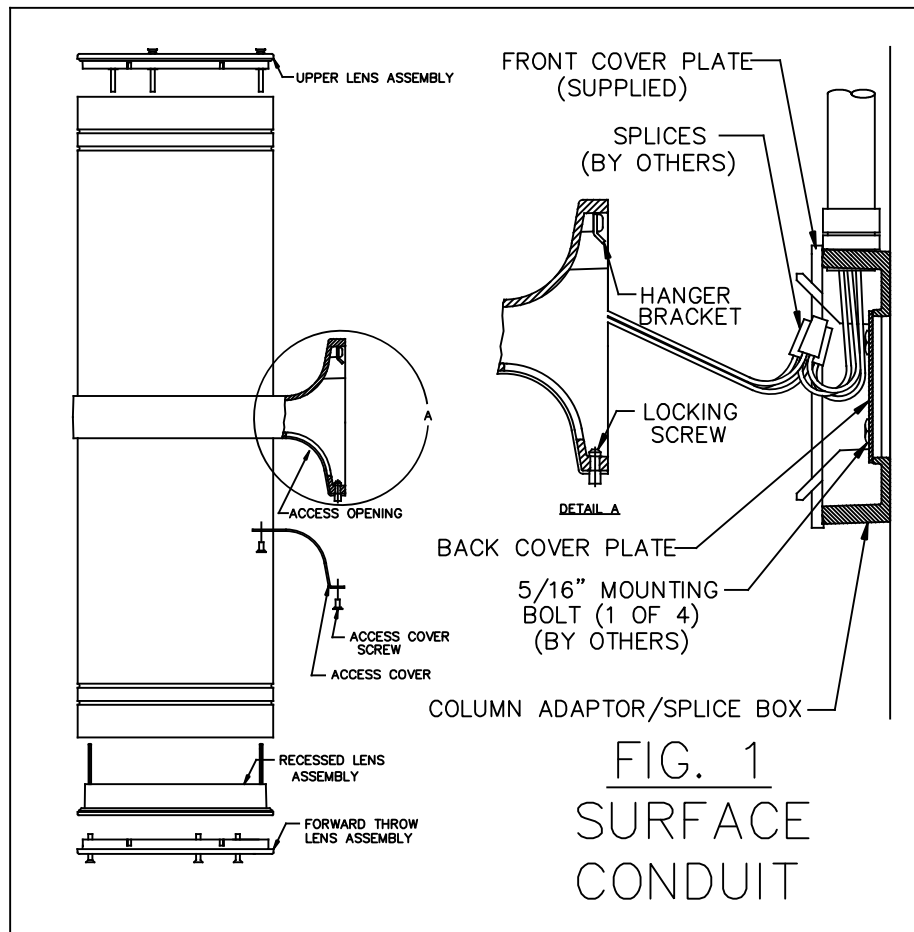
4. REMOVE AND RETAIN ACCESS PLATE AND ACCESS PLATE SCREWS. ROUTE FIXTURE WIRES THROUGH ACCESS OPENING.

5. CAREFULLY ENGAGE HANGER BRACKET TO ADAPTOR BEING CAREFUL NOT TO PINCH WIRES. ALLOW LUMINAIRE TO REST AGAINST ADAPTOR. REPLACE LOCKING SCREWS INSTALLED IN LUMINAIRE WITH LOCKING SCREWS SUPPLIED WITH ADAPTOR AND TIGHTEN.

6. MAKE ELECTRICAL CONNECTIONS, TAKING NOTE THAT THERE ARE TWO SETS OF FIXTURE WIRES, ONE FOR THE UPPER FIXTURE AND ONE FOR THE LOWER. THIS ALLOWS EACH FIXTURE TO BE INDIVIDUALLY CONTROLLED. CONNECT FIXTURE LINE TO SUPPLY LINE, COMMON TO COMMON AND GROUND TO GROUND.

7. PLACE SPLICES AND EXCESS WIRE IN SPLICE BOX.

8. REPLACE ACCESS PLATE AND SCREWS.



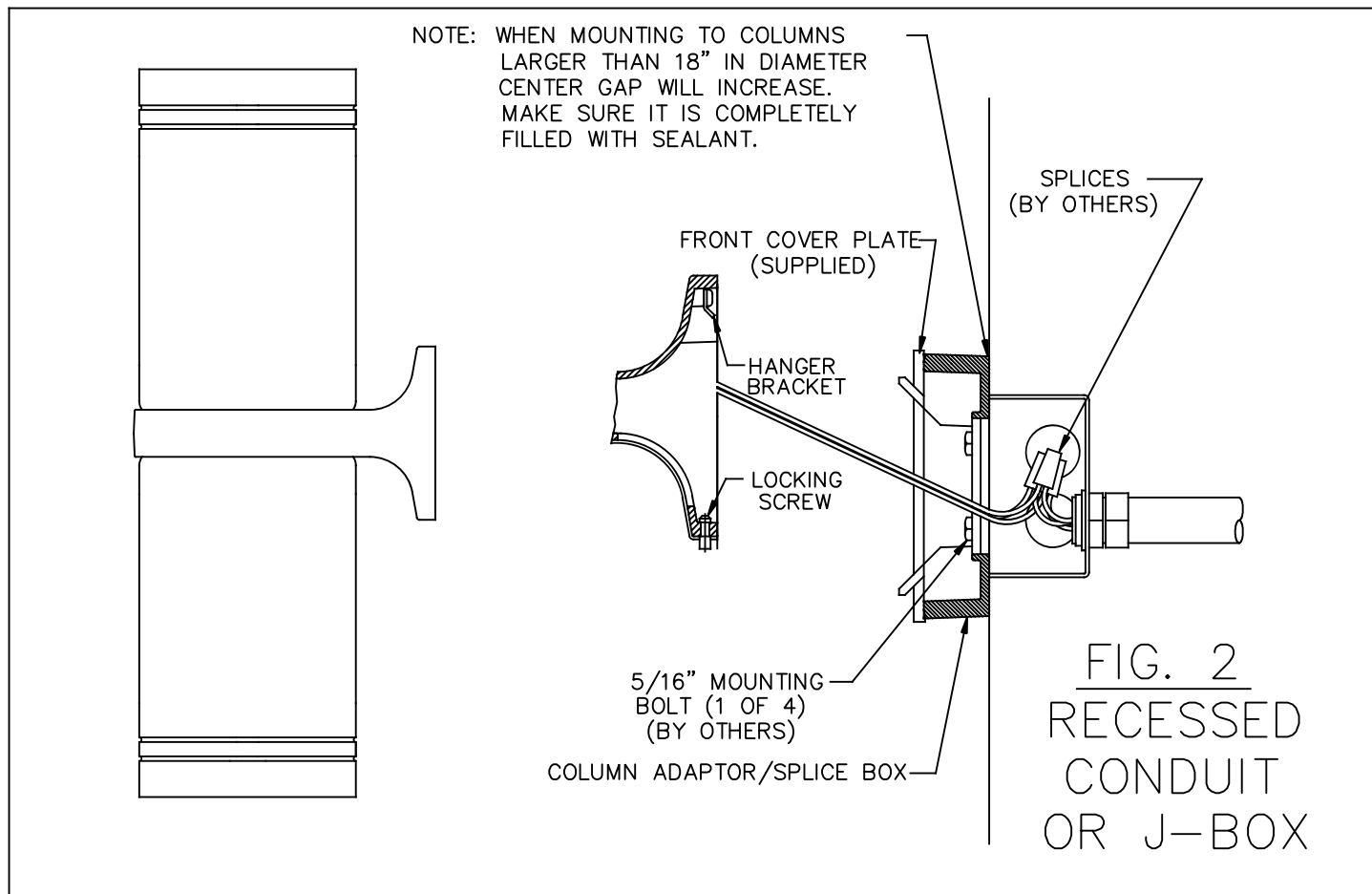
# INSTALLATION INSTRUCTIONS

## COLUMN ADAPTOR FOR 302 CYLINDERS

**PHILIPS**

**GARDCO**

IMPORTANT: READ ALL INSTRUCTIONS BEFORE PERFORMING ANY WORK.  
BE SURE ALL POWER IS OFF PRIOR TO INSTALLING LUMINAIRE.



9. IN LENSED UNITS, REMOVE LENS ASSEMBLY IF LAMP INSTALLATION IS REQUIRED. INSTALL LAMP AND REPLACE LENS ASSEMBLY. (TYPICAL LENS ASSEMBLIES ARE SHOWN IN FIG. 1 FOR REFERENCE ONLY)

NOTE: IN SPIKE DOWN (SD) FIXTURES TOP RELAMPING IS REQUIRED. IN SPIKE BOTH (SB) FIXTURES, THE LOWER LENS ASSEMBLY AND THE LOWER REFLECTOR ASSEMBLY MUST BE REMOVED FOR RELAMPING. THE REFLECTOR ASSEMBLY MAY BE REMOVED BY LOOSENING THE THREE SCREWS THAT SECURE IT TO THE HOUSING AND ROTATING THE ASSEMBLY TO DISENGAGE IT FROM THE SCREWS.

NOTE: COLUMN ADAPTOR/SPLICE BOX IS SECURED TO COLUMN WITH 5/16" BOLTS (BY OTHERS). STRUCTURAL MEMBERS MUST BE PRESENT IN COLUMN TO ACCEPT BOLTS.

