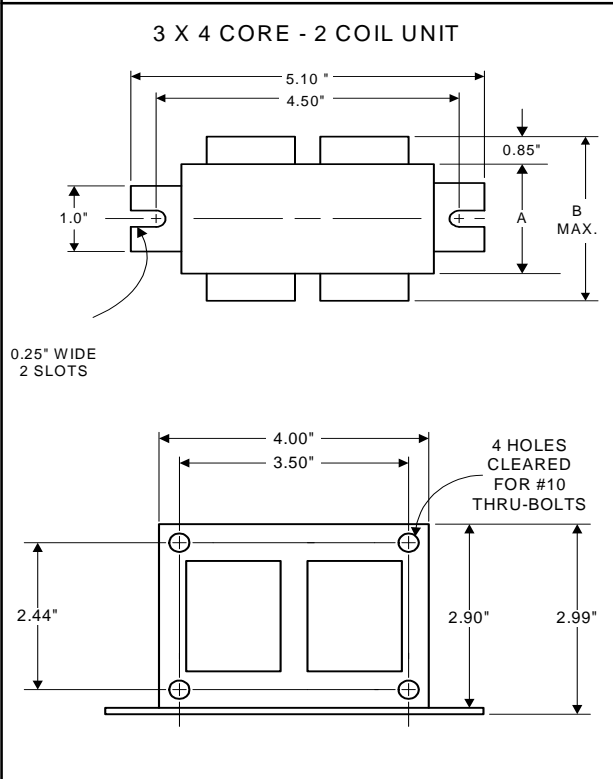


PHILIPS ADVANCE

Metal
Halide
Lamp Ballast

Catalog Number 71A5590
For 175/150W M57/M107
60 Hz CWA
Status: Active

DIMENSIONS AND DATA



	120	208	240	277	
INPUT VOLTS					
CIRCUIT TYPE	CWA				
POWER FACTOR (min)	90%				
REGULATION					
Line Volts	±10%				
Lamp Watts	±10%				
LINE CURRENT (Amps)					
Operating.....	1.80	1.04	0.90	0.80	
Open Circuit.....	1.78	1.08	0.93	0.81	
Starting.....	1.26	0.70	0.61	0.53	
UL TEMPERATURE RATINGS					
Insulation Class	H(180°C)				
Coil Temperature Code	1029				
	C	D	D	D	
MIN. AMBIENT STARTING TEMP.	-20°F or -30°C				
NOM. OPEN CIRCUIT VOLTAGE	305				
INPUT VOLTAGE AT LAMP DROPOUT.....	60	104	120	138	
INPUT WATTS	210				
RECOMMENDED FUSE (Amps).....	5	3	3	2	
CORE and COIL					
Dimension (A)	2.42				
Dimension (B)	3.95				
Weight (lbs.)	7				
Lead Lengths	12"				
CAPACITOR REQUIREMENT					
Microfarads	10.0				
Volts (min.)	400				
Fault Current Withstand (amps)					
60 Hz TEST PROCEDURES (Refer to Advance Test Procedure for HID Ballasts - Form 1270)					
High Potential Test (Volts)					
1 minute	2000				
2 seconds	2500				
Open Circuit Voltage Test (Volts)	275-335				
Short-Circuit Current Test (Amps)					
Secondary Current	1.50-1.90				
Input Current.....	1.06-1.59	0.60-0.90	0.52-0.78	0.45-0.67	-

Capacitor: 7C100M40-R



Capacitance: 10
Dia/Oval Dim: 1.45
Height: 3.75
Temp Rating: 105°C

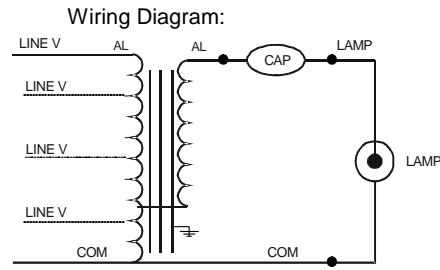


Fig. A6

Ordering Information

Order Suffix	Description

Ignitor: NA

NA

This ballast does not require the use of an ignitor.

Data is based upon tests performed by Philips Lighting Electronic N.A. in a controlled environment and representative of relative performance. Actual performance can vary depending on operating conditions. Specifications are subject to change without notice.

Philips Lighting Electronic N.A.

10275 West Higgins Road · Rosemont, IL 60018 · Tel:800-322-2086 Fax:888-432-1882
Customer Support/ Technical Service:800-372-3331 · OEM Support: 866-915-5886

02/21/13