

PHILIPS

Floodlighting

ArenaVision LED



BVP420



BVP978



Project: _____

Location: _____

Cat.No: _____

Type: _____

Lamps: _____ Qty: _____

Notes: _____

Philips ArenaVision LED sports lighting system is an innovative LED solution supporting the latest TV broadcasting standards and featuring a control platform to create a completely immersive lighting experience. Designed specifically for sports and multi-functional lighting applications, ArenaVision LED sports lighting floodlights offer outstanding light quality, effective thermal management, and a long life.

Ordering guide – Luminaire

Example: BVP978-845-69000-S3-UL

Luminaire ¹	Color Temperature	Lumen Output ²	Optics	Coating ³	Finish ⁴	Certification
<input type="text"/>	<input type="text"/>	<input type="text"/>	<input type="text"/>	<input type="text"/>	<input type="text"/>	<input type="text"/>
BVP420 ArenaVision LED floodlight (3 module version)	957 CW 5700K CRI 90	83000 111000 117000 95000 115000 118000 101000	S2 10x10 S3 13x10 S4 20x10 S5 16x16 S6 21x21 S7 29x29 S8 38x30	blank no coating (standard) MSP Marine salt protected ³	blank unpainted (standard) GR Silver gray (RAL10714)	UL cULus Listed
	857 CW 5700K CRI 80	92000 122000 129000 105000 128000 131000 110000				
	757 CW 5700K CRI 70	105000 138000 147000 120000 145000 149000 126000				
	845 CW 4500K CRI 80	83000 110000 116000 95000 115000 118000 100000				
BVP978 ArenaVision LED floodlight (2 module version)	957 CW 5700K CRI 90	58000 77000 81000 66000 80000 82000 70000	S2 10x10 S3 13x10 S4 20x10 S5 16x16 S6 21x21 S7 29x29 S8 38x30	blank no coating (standard) MSP Marine salt protected ³	blank unpainted (standard) GR Silver gray (RAL10714)	UL cULus Listed
	857 CW 5700K CRI 80	64000 85000 90000 73000 89000 91000 77000				
	757 CW 5700K CRI 70	73000 96000 102000 83000 101000 104000 88000				
	845 CW 4500K CRI 80	57000 76000 80000 65000 79000 81000 69000				

Accessories (order separately, installed in the field)

- ZVP420 L** External louver for BVP420 (1 piece that covers all three modules)
- ZVP500 L** External louver for BVP978 (includes 2 pieces = 1 per module)
- ZVP420 PAD AO** Precision aiming device

Footnotes

- Select BOTH Luminaire AND Driver box together. Select **EITHER BVP420 and EVP428 OR BVP978 and EVP978** depending on specific lumen output needs; note that both luminaire and driver box combinations can be used either indoor or outdoor.
- BVP420 (3-module) 83,000 to 149,000 outdoor and 83,000 to 120,000 indoor. BVP978 (2-module) 57,000 to 104,000 outdoor and 57,000 to 83,000 indoor.
- When **MSP** option is selected, specify MSP for both the Luminaire and the Driver box. With MSP coating Luminaire and Driver box **always painted** - Luminaire painted GR Silver gray (RAL10714), Driver box select either standard Light gray (RAL7035) Finish or optional GR Silver gray (RAL10714) Finish. Can **NOT** choose unpainted when MSP is selected.
- Light engine module heat sinks always black coated regardless of Finish selected.



BVP420 or BVP978 ArenaVision LED floodlight

EVP428 or EVP978 ArenaVision LED driver

floodlighting system



Ordering guide – Driver box

Example: EVP978-IP66-845-69000-277-PSDMX-PI6-F1-UL

Driver box ¹	IP Rating	Color Temp.	Lumen Output ²	Coating ³	Finish ⁴	Voltage	Constant Light Output (CLO)	System Package ⁵	Fusing ⁶	Certification
	IP66							PSDMX-PI6		UL
EVP428 ArenaVision LED driver (for 3 module version)	IP66	957 CW 5700K CRI 90	83000 115000 95000 117000 101000 118000 111000	blank No coating, painted Light grey (RAL7035)	blank Light grey (RAL7035, standard) GR Silver gray (RAL10714)	120 120V 208 208V 240 240V 277 277V 347 347V 480 480V	blank no CLO (std.) CLO-20K CLO for 20,000 burning hours, up to 4% average power savings CLO-40K CLO for 40,000 burning hours, up to 8% average power savings	PSDMX-PI6 System enabled with DMX-RDM push-in connector	blank no fusing F1 Single fuse (120V, 277V, 347V) F2 Double fuse/ Canadian double pull fuse (208V, 240V, 480V)	UL cULus Listed
		857 CW 5700K CRI 80	92000 128000 105000 129000 110000 131000 122000	MSP Marine salt protected ³						
		757 CW 5700K CRI 70	105000 145000 120000 147000 126000 149000 138000							
		845 CW 4500K CRI 80	83000 115000 95000 116000 100000 118000 110000							
EVP978 ArenaVision LED driver (for 2 module version)	IP66	957 CW 5700K CRI 90	58000 80000 66000 81000 70000 82000 77000	blank No coating, painted Light grey (RAL7035)	blank Light grey (RAL7035, standard) GR Silver gray (RAL10714)	120 120V 208 208V 240 240V 277 277V 347 347V 480 480V	blank no CLO (std.) CLO-20K CLO for 20,000 burning hours, up to 4% average power savings CLO-40K CLO for 40,000 burning hours, up to 8% average power savings	PSDMX-PI6 System enabled with DMX-RDM push-in connector	blank no fusing F1 Single fuse (120V, 277V, 347V) F2 Double fuse/ Canadian double pull fuse (208V, 240V, 480V)	UL cULus Listed
		857 CW 5700K CRI 80	64000 89000 73000 90000 77000 91000 85000	MSP Marine salt protected ³						
		757 CW 5700K CRI 70	73000 101000 83000 102000 88000 104000 96000							
		845 CW 4500K CRI 80	57000 79000 65000 80000 69000 81000 76000							

Footnotes

- Select BOTH Luminaire AND Driver box together. Select **EITHER BVP420 and EVP428 OR BVP978 and EVP978** depending on specific lumen output needs; note that both luminaire and driver box combinations can be used either indoor or outdoor.
- BVP420 (3-module) 83,000 to 149,000 outdoor and 83,000 to 120,000 indoor.
BVP978 (2-module) 57,000 to 104,000 outdoor and 57,000 to 83,000 indoor.
- When **MSP** option is selected, specify **MSP** for both the Luminaire and the Driver box. With MSP coating Luminaire and Driver box always painted - Luminaire painted GR Silver gray (RAL10714), Driver box select either standard Light gray (RAL7035) Finish or optional GR Silver gray (RAL10714) Finish. Can NOT choose unpainted when MSP is selected.
- IP66 Driver box always painted for thermal management purposes even if no Coating is selected - select either standard Light gray (RAL7035) Finish or optional GR Silver gray (RAL10714) Finish.
- Philips dedicated and scalable controls ordered separately.
- Must specify input voltage.

BVP420 or BVP978 ArenaVision LED floodlight

EVP428 or EVP978 ArenaVision LED driver

floodlighting system

Application

- Outdoor sports stadiums
- Indoor sports arenas
- Multi-purpose venues and events

Features & Benefits

- Maximum design flexibility and a high level of lighting quality – flicker-free in televised applications
- High CRI for vivid color rendering and flicker free lighting for high quality images for HDTV and super slow motion
- Creation and triggering of various lighting sequences, as well as flexibility in switching between different types of events
- System enables interfacing with external lighting controllers
- LED technology allows instant, dynamic control of the lighting
- Highly efficient optical systems
- Part of an end-to-end integrated Sportslighting management system that also includes a dedicated control system

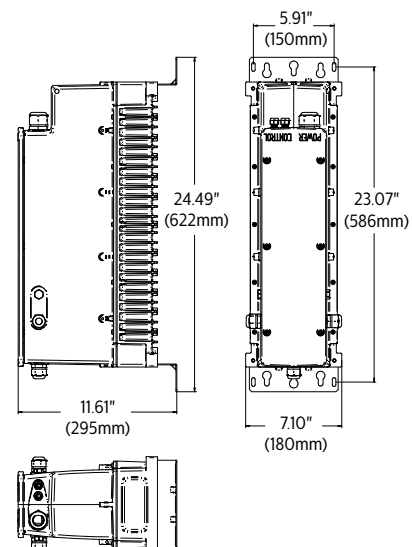
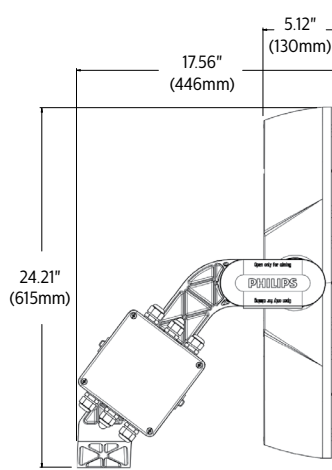
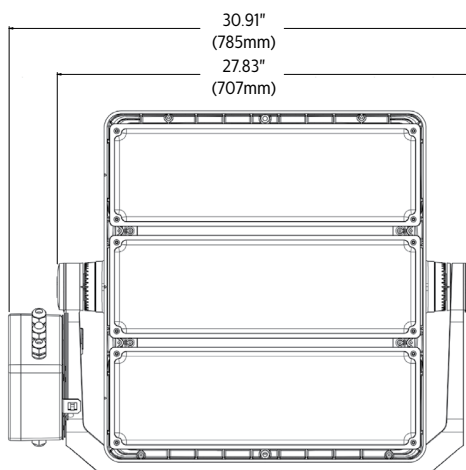
Specifications

- **Lumen output** – BVP420 (3-module) 83,000 to 149,000 outdoor and 83,000 to 120,000 indoor. BVP978 (2-module) 57,000 to 104,000 outdoor and 57,000 to 83,000 indoor.

- **Wattage** – 923W to 1408W (EVP420 3-module), 625W to 954W (EVP978 2-module)
- **System Efficacy** – up to 116 LPW (EVP420 3-module), up to 118 LPW (EVP978 2-module)
- **CRI** – 90, 80, or 70 (5700K); 80 (4500K)
- **TLCI** – up to 86 (5700K CRI 90)
- **CCT** – Cool White CW 5700K (+/- 400K) or Neutral White NW 4500K (+250/-200K)
- **System Lifetime** – LED lifetime L80 up to 50k hrs and driver lifetime 50k hrs – total system lifetime depends on application and design choices
- **Flicker %** – < 2%
- **Operating Temp Range** – (-30°C to +45°C) (-22°F to +113°F)
- **EPA** – 3.77 at 65° tilt
- **Luminaire Construction** – molded aluminum standard no finish / coating (can select optional finish or coating), UV protected polycarbonate LED light engine module lenses, molded color-impregnated plastic electrical connection box
- **Luminaire Mounting and Aiming** – molded aluminum U-shaped mounting bracket (same finish/coating as luminaire), fixation with standard bolts and nuts, aiming: -90° / +90° with protractor scale with 5° intervals (ZVP420 PAD AO Precision aiming device option available) - do NOT aim upwards in uplighting applications.

- **Aiming memory** – safeguards the original aiming position of luminaire after servicing
- **Driver Box Construction** – molded aluminum and always painted (select finish/coating)
- **Driver Box Installation** – Remote mounting up to 374 ft
- **Electrical Connection** –
Mains input: Push-in terminals for wires up to 16 AWG. Cord seal is M25 thread, 1/4"-1/2" grip range for cords up to 16 AWG (no thru-wiring in/out)
Output to luminaire's electrical connection box: Cord seal is M20 thread, 1/4"-1/2" grip range for cords up to 16AWG
Cables to luminaire's electrical connection box: 3 cables of 7-core each at desired length (Cables not supplied by Philips)
- **Listings** – cULus Wet Location Listed for US and Canada. DLC QPL DesignLights Consortium Qualified Products List.
- **IP Rating** – IP66 sealed Luminaire light engine modules and Driver box
- **IK Rating** – IK08 impact resistance
- **System Surge Protection** – 10kV standard
- **Warranty** – 5-year limited warranty standard, extended warranty available and depends on application and design choices

Dimensions



Floodlight weight –

BVP420 3-module: 65.5 lbs (29.7 kg)
 BVP978 2-module: 53.0 lbs (24.0 kg)

Driver box weight –

EVP420 3-module: 28.7 lbs (13.0 kg)
 EVP978 2-module: 26.3 lbs (11.9 kg)

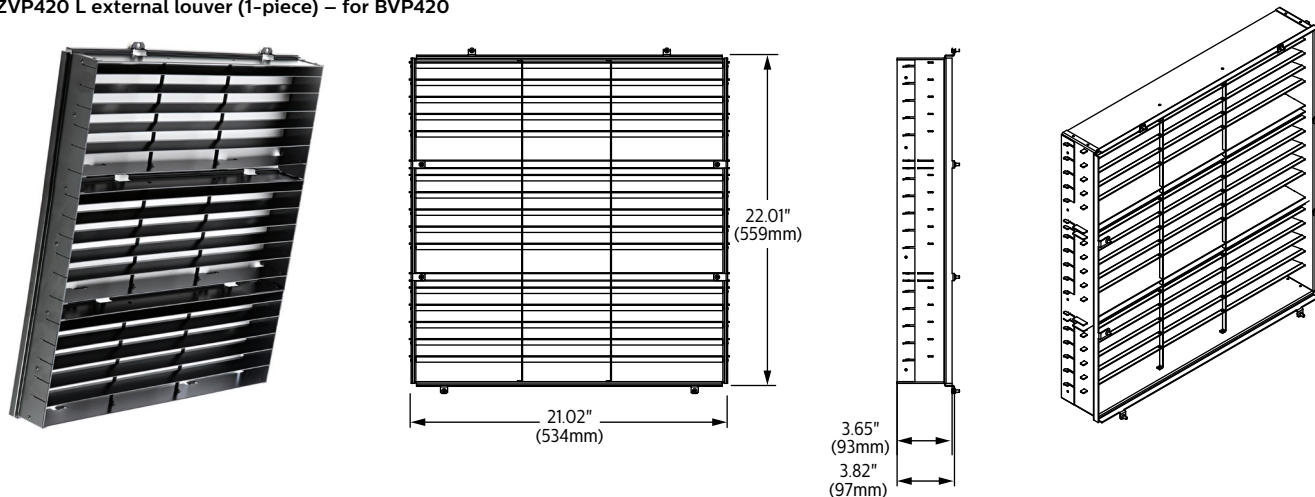
BVP420 or BVP978 ArenaVision LED floodlight

EVP428 or EVP978 ArenaVision LED driver

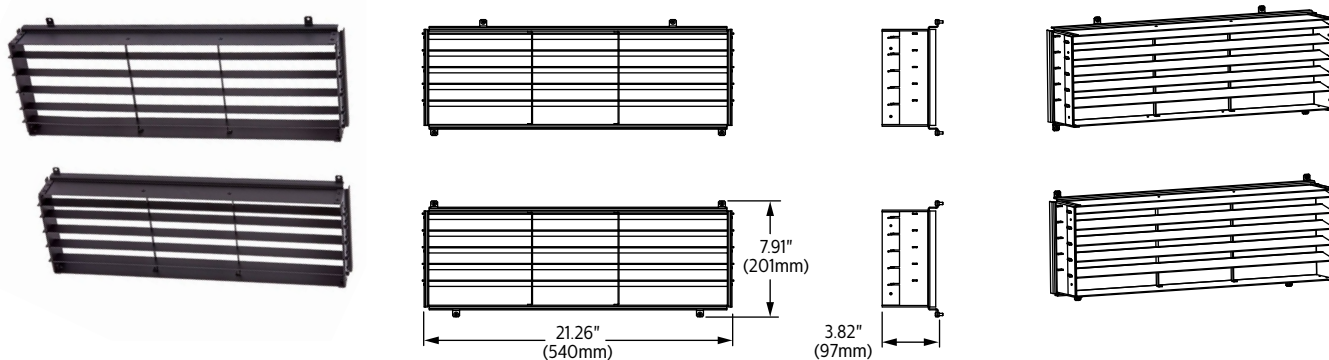
floodlighting system

Accessory dimensions

ZVP420 L external louver (1-piece) – for BVP420



ZVP500 L external louver (2-pieces) – for BVP978



ZVP420 PAD AO – precision aiming device



© 2017 Philips Lighting Holding B.V. All rights reserved.
Philips reserves the right to make changes in specifications
and/or to discontinue any product at any time without notice
or obligation and will not be liable for any consequences
resulting from the use of this publication.
philips.com/luminaires



Philips Lighting North America Corporation
200 Franklin Square Drive, Somerset, NJ 08873
Tel. 855-486-2216

Philips Lighting Canada Ltd.
281 Hillmount Rd, Markham, ON, Canada L6C 2S3
Tel. 800-668-9008