

LLI20X Trunking

Mounting Instruction

4441 000 98051

IEC
60598

GB
7000



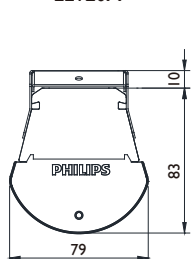
$t_a 35^{\circ}\text{C}$

IP20

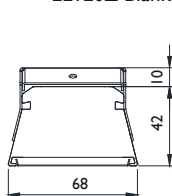


Product Type	Voltage (v)	Frequency (Hz)	I (A)	Power (w)	CCT	Optic Cover	Dimension (Length. mm)	Weight (Kg)	Max. Line Current (A) (L1-N / L2-N / L3-N)
LLI20X LED35 LI500 PSD	220-240~	50/60	0.17	36	4000k	OP DA WB	1495	3.4	10
LLI20X LED70 LI500 PSD			0.32	70			1495	3.4	10
LLI20X LED70 L3000 PSD			0.34	2×36			2991	6.8	10
LLI20X LED140 L3000 PSD			0.64	2×70			2991	6.8	10
LLI20X LED35 LI500 PSU			0.17	36			1495	3.4	10
LLI20X LED70 LI500 PSU			0.32	70			1495	3.4	10
LLI20X LED70 L3000 PSU			0.34	2×36			2991	6.8	10
LLI20X LED140 L3000 PSU			0.64	2×70			2991	6.8	10

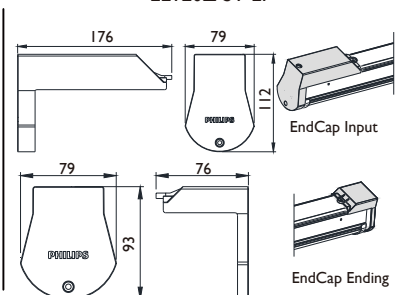
LLI20X



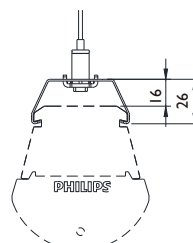
LLI20Z Blank



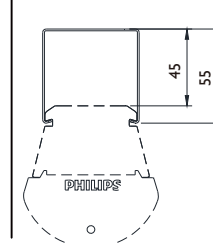
LLI20Z ST EP



LLI20Z SP Suspend Bracket



LLI20Z MB Surface Bracket

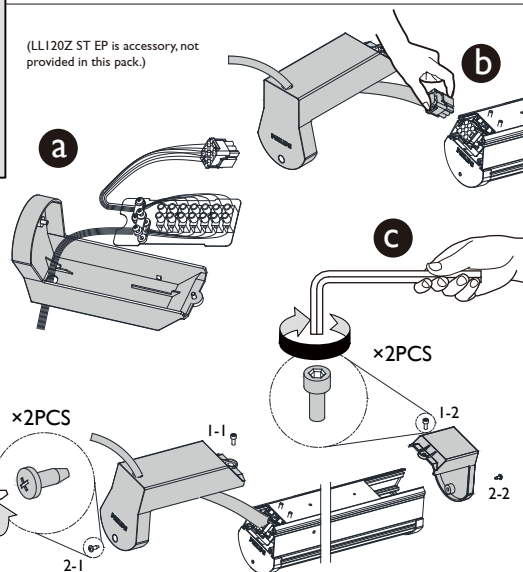


1. The luminaire shall be installed by a qualified electrician and wired in accordance with the latest IEE electrical regulations or the national requirements.
2. The product is suitable for surface and suspend bracket.
3. Do not use in supply voltage exceeding 220-240V.
4. Do not place readily flammable material near the lamp, prevent the risk of fire or electric shock.
5. In case of operation failure, please switch off the power and contact your nearest Philips dealer.
6. The manufacture will not be held responsible for improper usage or modification of the product.
7. Do not use other electrical products in this luminaire system.
8. Please switch off the power supply before changing the product or connection!
9. Do not use the product in outdoor environments.
10. The light source contained in this luminaire shall only be replaced by the manufacturer or his service agent or a similar qualified person.
11. The luminaire working environment requirements hydrogen sulphide less than 1ppb.

Internal cable

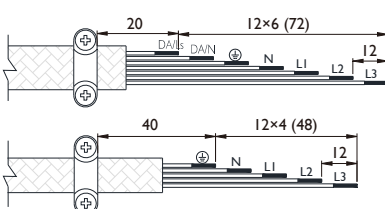
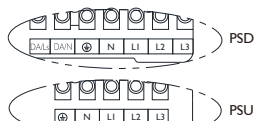
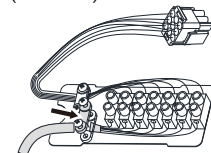
	Wire Type	Color	PSD	PSU
1	DA/Ls	Purple	Y	N
2	DA/N	White	Y	N
3	⊕	Yellow-Green	Y	Y
4	N	Blue	Y	Y
5	L1	Red	Y	Y
6	L2	Black	Y	Y
7	L3	Brown	Y	Y

(LLI20Z ST EP is accessory, not provided in this pack.)

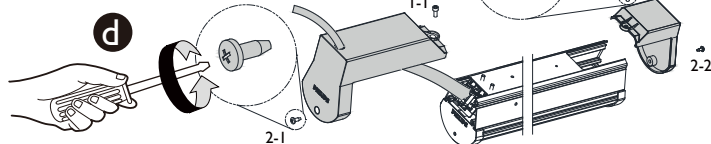


Connection for Power cable

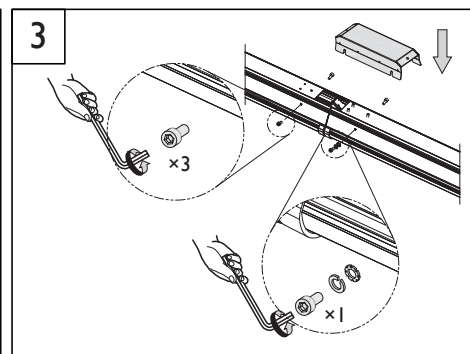
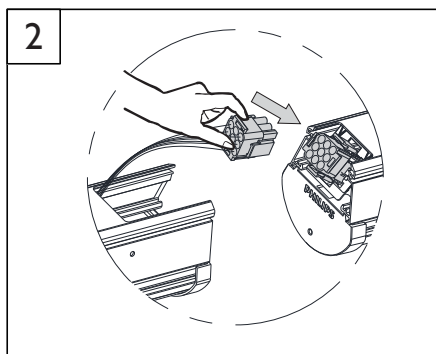
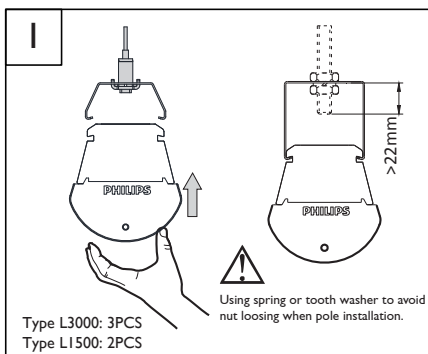
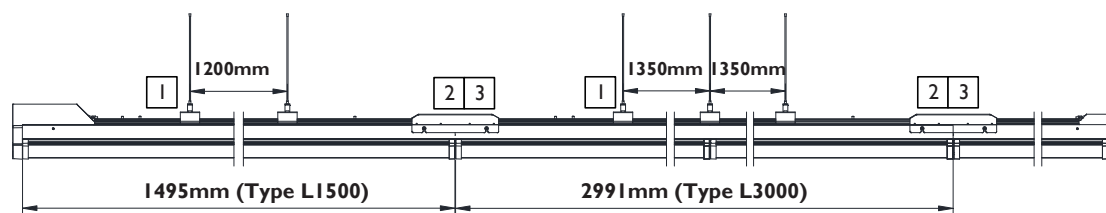
(unit: mm)



Wire spec: 60227 IEC52/60245 IEC57 1.5~2.5mm² (not provided), strip length: 8mm.

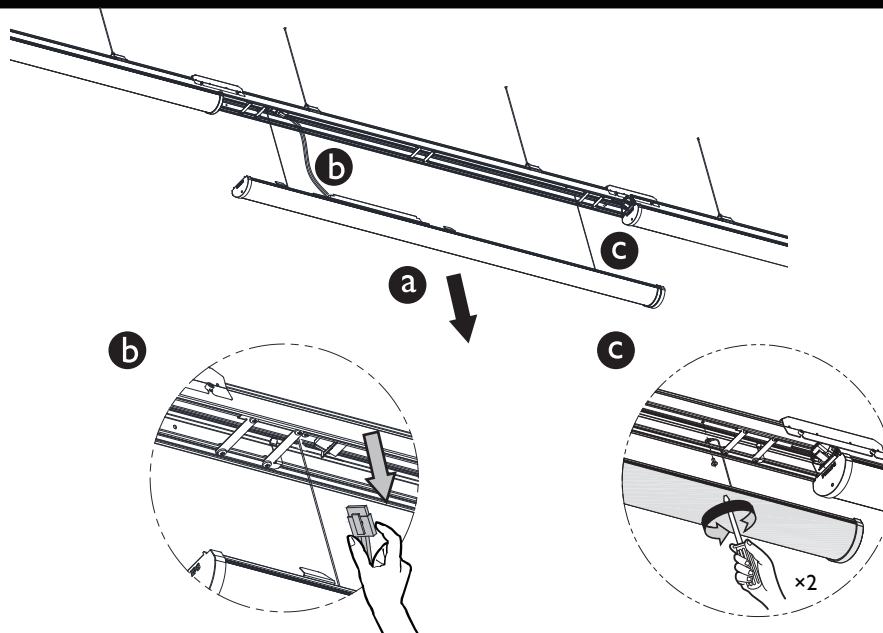


Installation & Connection



Maintenance

Uninstall Housing



Install Housing

