

A perfect blend of design, performance and value



LPF1



LPF2



LPF3*



LPF4*

*Slipfitter shown, trunnion mount also available

LYTEPRO LED FLOODLIGHTS

Philips Stonco LytePro LED Floodlights are contractor friendly solutions that deliver excellent performance and energy savings.

Benefits

- Available in 4 compact architectural housings
- Multiple mountings available in the LPF3 and LPF4
- Lumen package ranges from 1,700 to 9,000+ with efficacies of 79-89 lumens per watt
- Effectively replaces HID products from 70-250W minimum
- 4000K neutral white is standard, 5000K cool white is optional, minimum 80 CRI
- Optics provide excellent uniformity ideal for general facade, target and landscape illumination
- Fixtures are IP66 rated and suitable for use in ambients from -40°C to 40°C
- LPF1 and LPF2 have a minimum rated system life of 100K hours for the driver and LED (L_{70}) at a 30°C ambient
- LPF3 and LPF4 have a minimum rated system life of 80K hours for the driver and LED (L_{70}) at a 30°C ambient
- 5 year limited warranty. See philips.com/warranties for details
- Full four color POP packaging in the LPF1, LPF2 and LPF3 with additional merchandising materials available for display
- Stocked in 5 different dark bronze configurations for quick 2-day shipment
- Additional made to order configurations available in three colors, and are assembled in the USA, consult factory for lead time



**PHILIPS
Stonco**

LYTEPRO LED FLOODLIGHTS

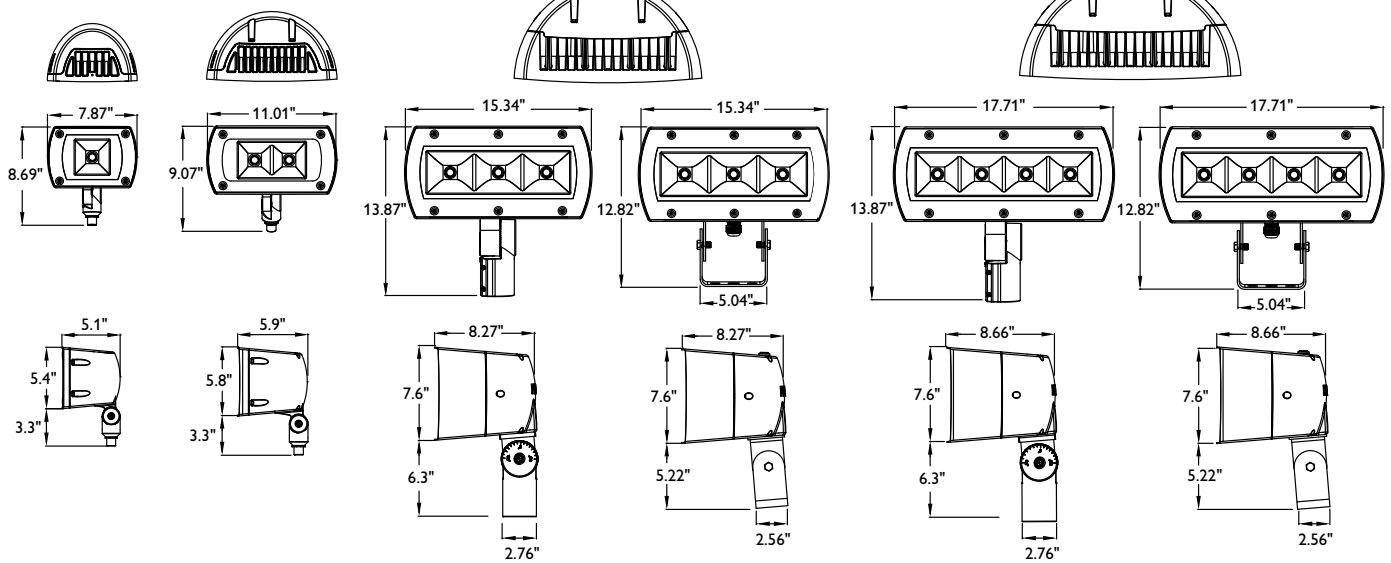
Dimensions

LPF1 (20W) Micro

LPF2 (40W) Small

LPF3 (85W) Medium

LPF4 (105W) Large



Made to Order Luminaires – Ordering Guide¹

| Series/# of COB | Drive Current | Color Temperature | Distribution | Mounting | Options | Voltage | Finish |
|-----------------|---------------|-----------------------|--------------|--------------------------|---------------------------------------|------------|-------------------------|
| LPF1 Micro | E 500 mA | 4K 4000K ² | FL Flood | K Knuckle 1/2" NPT | F1 ³ Single Fusing | 1 120V | BZ Textured Dark Bronze |
| LPF2 Small | | 5K 5000K ² | | | F2 ⁴ Double Fusing | 2 208V | WH Textured White |
| LPF3 Medium | C 700 mA | | FL Flood | S Slipfitter 2-3/8" O.D. | F3 ⁵ Double Fusing, Canada | 3 240V | DDY Textured Dark Gray |
| LPF4 Large | | | | | PCB ⁶ Photocontrol | 4 277V | |
| | | | SP Spot | T Trunnion | DM25 ^{7,8} Dynadimmer | 6 347V | |
| | | | | | | 8 120-277V | |

1. MTO configurations are assembled in the USA

2. Both 4K and 5K options have a minimum 80 CRI

3. 'F1' for 120, 277, 347V

4. 'F2' for 208, 240V

5. 'F3' for 208, 240V Canadian double pull

6. Specify voltage. 'PCB' not available with '8' universal voltage option

7. 'DM25' only available 120-277V and dims to 25% for 6 hours

8. Dynadimmer is suitable for use from -30°C to 40° temperature ambient only

Accessories – Ordering Guide (must be ordered separately)

| Catalog # | Description |
|--------------------------|-----------------------------|
| LPF(*)WG ^{9,10} | Wire Guard (*Specify Size) |
| LPF(*)SG ^{9,10} | Stone Guard (*Specify Size) |

9. Limited quantities stocked in our Carrollton RDC.

10. Contact factory for availability of large order quantities.

Stocked Luminaires – Ordering Guide^{11,12,13,14}

| Catalog # | Description | Master Pack, QTY | UPC Code |
|------------|----------------------------------|------------------|--------------|
| STKLPF1K-8 | LPF1, Knuckle Mount, 120-277V | Yes, 4 | 786034956925 |
| STKLPF2K-8 | LPF2, Knuckle Mount, 120-277V | Yes, 4 | 786034956932 |
| STKLPF3S-8 | LPF3, Slipfitter Mount, 120-277V | Yes, 2 | 786034956949 |
| STKLPF4S-8 | LPF4, Slipfitter Mount, 120-277V | 1 | 786034956956 |
| STKLPF4T-8 | LPF4, Trunnion Mount, 120-277V | 1 | 786034956963 |

11. All stock products are 'BZ' Textured Dark Bronze, '4K' Neutral White and 'FL' Flood Optics.

12. Stock LPF products ship out of our Carrollton Distribution facility within 2-days of receipt of order.

13. Always consult factory for current inventory levels. Larger quantities may be converted to MTO if necessary.

14. LPF1, LPF2 & LPF3 are provided with full 4-color POP packaging. LPF4 is provided in a standard shipper box.

Specifications

| | LPF1 | LPF2 | LPF3 | LPF4 |
|--|-------------|-------------|-------------|-------------|
| Average Wattage ¹⁵ | 20 | 40 | 85 | 105 |
| Initial Lumens (4K & 5K) ¹⁶ | 1,773 | 3,460 | 7,012 | 9,191 |
| Lumens/Watt | 89 | 87 | 82 | 88 |
| NEMA Beam | 6H x 6V | 6H x 6V | 6H x 6V | 6H x 6V |
| 50% beam (hor. x vert.) | 100° x 100° | 93° x 79° | 101° x 97° | 101° x 98° |
| 10% beam (hor. x vert.) | 124° x 128° | 127° x 105° | 130° x 125° | 127° x 125° |

15. System input wattage may vary based on input voltage, by up to +/- 8%, and based on manufacturer forward voltage, by up to +/- 4%.

16. Lumen values based on photometric tests performed in compliance with IESNA LM-79.

Predicted Lumen Depreciation Data¹⁷

| Ambient Temp. °C | TM-21 Calculated L ₇₀ hrs ^{17,18} | Reported L ₇₀ Per TM-21 ^{18,19} | Lumen Maint. % @60,000 hrs |
|------------------|---|---|----------------------------|
| up to 40°C | 269,000 hrs | >48,000 hrs | 91.5% |

17. Calculated performance derived from LED manufacturer's data and engineering design estimates, based on IESNA LM-80 methodology. Actual experience may vary due to field application conditions.

18. L₇₀ is the predicted time when LED performance depreciates to 70% of initial lumen output.

19. Reported per IESNA TM21-11. Published L₇₀ hours limited to 6 times actual LED test hours.



© 2017 Philips Lighting Holding B.V. All rights reserved.
Specifications are subject to change without notice.
www.philips.com/luminaires

PSt-1401BN 06/17

Philips Lighting
North America Corporation
200 Franklin Square Drive
Somerset, NJ 08873
Phone: 855-486-2216

Philips Lighting Canada Ltd.
281 Hillmount Road
Markham ON, Canada L6C 2S3
Phone: 800-668-9008