

**PHILIPS**  
**LIGHTOLIER**

Track

Alcyon LED



Actual Size



Clean **architectural** design

Specification-grade track lighting

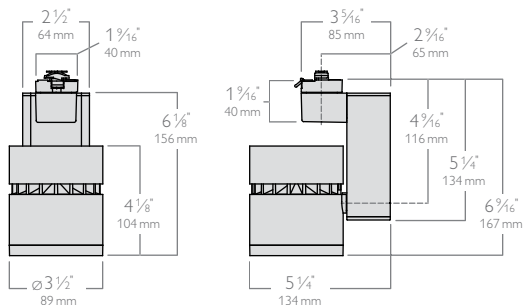
Shown with  
Spot (RS)  
reflector.



## LLAV01 & LLAV11

10W/600lm

15W/1000lm



See specification sheets **LLAV01** and **LLAV11** for more information.



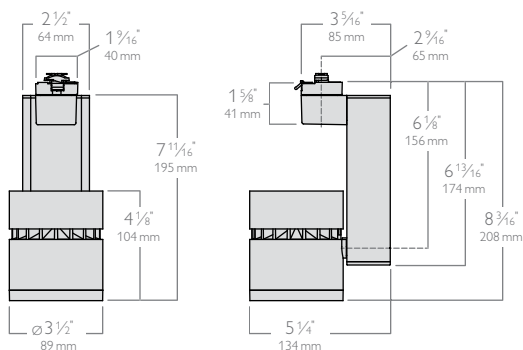
Available with RNF,  
RNS and RS reflectors  
(RNS & RF reflector above).

Shown with  
Spot (RS)  
reflector.



## LLAV20

28W/2000lm



See specification sheets **LLAV20** for more information.



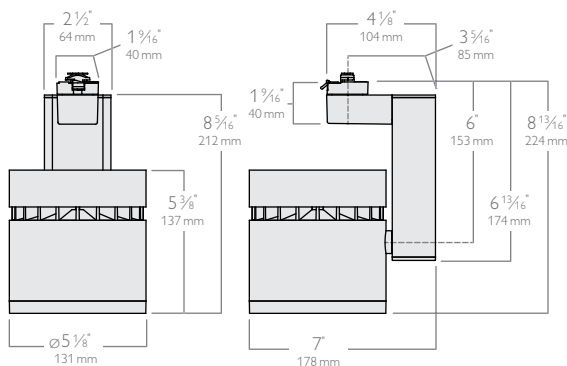
Available with RNF,  
RNS and RS reflectors  
(RNS & RF reflector above).

Shown with  
Spot (RS)  
reflector.



## LLAV30

34W/3000lm



See specification sheets **LLAV30** for more information.



Available with RF,  
RNS and RS reflectors  
(RNF reflector above).

# Alcyon LED vertical cylinder

Taking LED accent lighting to the next level

Alcyon LED Vertical is a single-optic LED platform designed with a balance of form, function and visual comfort. Its complete flexibility in lumen output and beam angle allows for optimal lighting designs including extremely tight accent applications. Its industry leading efficacy and candlepower levels offer customers a low energy consumption solution that provides maximum light output at minimum watts per square foot to meet the latest ASHRAE codes.



## Components

1. Fixture
2. Reflector
3. Accessory holder
4. Accessory spring
5. Diffusion filters
6. Hex cell louver
7. Snoot
8. Aperture ring

## Features

- Efficacy: up to 75 lm/W
- Lumens: 600, 1000, 2000, 3000
- Correlated Color Temperature: 2700K, 3000K, 4000K
- Color Rendering Index: 80-90
- Reflectors: Narrow Spot, Spot, Narrow Flood and Flood beams
- Finishes: White, Black, Aluminum
- ENERGY STAR® certified
- 1000lm 10° Narrow Spot (RNS) delivers more than 24,000 CBCP (Center Beam Candle Power) for excellent punch
- Allows for multiple accessories
- Trailing edge (ELV) dimming
- Rated lifetime of 50,000 hours at 70% lumen maintenance
- Quick ship options available

## Fixture

example: LLAV20930BKCW

Series	Lumens	CRI/CCT	Adapter	Finish	Options
<b>LLAV</b>					
LLAV Alcyon LED vertical cylinder	01 10W/600lm	27 80 CRI/2700K	— Lightolier	WH White	—
	11 15W/1000lm	30 80 CRI/3000K	H Halo	AL Alum.	
	20 28W/2000lm	40 80 CRI/4000K	J Juno	BK Black	
	30 34W/3000lm		P Prospec <sup>2</sup>		
		927 90 CRI/2700K	— Lightolier	WH White	
		930 90 CRI/3000K <sup>1</sup>	H Halo	AL Alum.	
			J Juno	BK Black	
			P Prospec <sup>2</sup>		CW CrispWhite <sup>1</sup>

1. CrispWhite (CW) is only available with 90CRI / 3000K CCT (930).

2. Prospec is only offered in White (WH) and Black (BK).

## Narrow Spot



## Spot



## Narrow Flood



## Flood



## Reflector

example: LLAV11RS

Series	Lumens	Reflector
<b>LLAV</b>		
LLAV Alcyon LED vertical cylinder	11 10W/600lm, 15W/1000lm, 28W/2000lm	RNS 10° Narrow Spot
		RS 18° Spot
		RNF 24° Narrow Flood
		RF 36° Flood
	12 34W/3000lm	RNS 11° Narrow Spot
		RS 17° Spot
		RNF 24° Narrow Flood
		RF 36° Flood

For added flexibility, the interchangeable reflectors along with the widest range of accessories help designers customize the light output to create the perfect environment.

## Accessories<sup>1</sup>

example: 23NT6AL

Series	Finish
<b>Accessory holders</b>	
LLAV11AH for LLAV01, LLAV11, & LLAV20	WH White
LLAV12AH for LLAV30	AL Alum.
	BK Black
<b>Compatible snoots</b>	
LLA11SN for LLAV01, LLAV11, & LLAV20	WH White
23SNT6 for LLAV30	AL Alum.
	BK Black

## Diffusion filters

LLAV11 for LLAV01, LLAV11, & LLAV20 series  
ADF4 for LLAV30 series

## Color filters

Compatible color filters/gels provided by others (not available for 2000lm fixtures).

## Hex cell louvers (matte black)

LLAHCA11 for LLAV01, LLAV11, & LLAV20 series  
AL4HC for LLAV30 series

## Mounting

Compatible with all Monopoint, Multipoint, recessed track, suspension track, suspension stems, sloped ceiling adapters as well as Basic, Advent and Radius track systems. Ceiling and horizontal or vertical wall mounted.

## Labels

cULus, I.B.E.W.  
5 year warranty.  
(direct ceiling and wall mount only).





© 2016 Philips Lighting Holding B.V. All rights reserved. Philips reserves the right to make changes in specifications and/or to discontinue any product at any time without notice or obligation and will not be liable for any consequences resulting from the use of this publication.

PLI-1529BN 05/16 [philips.com/luminaires](http://philips.com/luminaires)

Philips Lighting  
North America Corporation  
200 Franklin Square Drive  
Somerset, NJ 08873  
Tel. 855-486-2216

Philips Lighting Canada Ltd.  
281 Hillmount Rd,  
Markham, ON,  
Canada L6C 2S3  
Tel. 800-668-9008