



PHILIPS  
Hue  
White and colour  
ambience  
Starter kit  
E27



8718696461532

# Limitless possibilities

Get started with the Philips Hue White and colour ambience starter kit and experience high-quality white and coloured light that offers you endless possibilities.

## Turn on your imagination

- Play with light and choose from 16 million colours
- Sync your Philips Hue lights with films and music

## Turn on your moments

- Warm white to cool bright daylight
- Energise, concentrate, read and relax with light
- Wake up gently to your personal sunrise

## Turn on your peace of mind

- Control your lights from anywhere
- Set light schedules for easy home automation
- Control your lights, your way

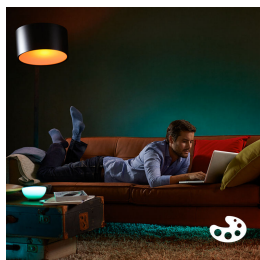
# PHILIPS

**Easy, reliable and future-proof system**

- Connect up to 50 Philips Hue lights
- Compatible with Apple HomeKit technology

# Highlights

## Paint with light



Play with light and choose from 16 million colours in the Hue app to match the light to your mood. Use a favourite photo and re-live that special moment with splashes of light. Save your favourite light settings and recall them whenever you want with the tap of a finger.

## Create your ambience



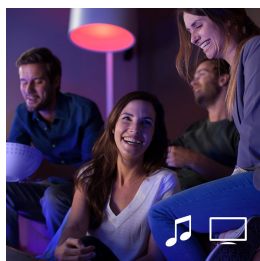
Set the right ambience for any moment with a range of beautiful, natural white light. Use the app to set any shade of white light, from cool energising daylight to relaxing warm white light. Take control and set the ambience. Not too bright. Not too dark. Just right.

## Wake up naturally



Ease your sleeping routine and wake up gently for a fresh start each day. Philips Hue will help get you out of bed in a nice way. The gradually increasing light intensity gives you the feeling that you are waking up naturally with sunlight — rather than the rude awakening of an alarm ringing.

## Sync light to music and films



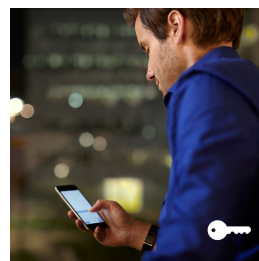
Extend your TV viewing experience to the whole room or lift your gaming experience to the next level. Download a third-party app and discover the amazing things you can do with Philips Hue. Or sync light to your favourite music and enjoy every beat to the fullest. Turn any room into a dance floor and see how light reacts to your music. Download one of the third-party apps and get the party started with Philips Hue.

## Light for your well-being



Light influences our mood, behaviour, alertness and routines. Through the app, you can set the light that is optimal for your moment. Philips Hue helps you to energise, concentrate, read and relax. Customise your daily routines into moments you can enjoy. Feel different. Feel better.

## Away-from-home control



You can control your lights remotely wherever you are. Check if you have forgotten to switch your lights off before you left your home, and switch them on if you are working late. With geofencing technology, your lights can even welcome you home or switch off automatically when you leave your home. It's all about simplifying your life and giving you peace of mind in smart and useful ways.

### Set light schedules



Philips Hue can make it seem like you're at home when you're not, using the schedule function in the Philips Hue app. Set the lights to come on at a pre-set time, so the lights are on when you arrive home. You can even set rooms to light up at different times. And of course, you can let the lights turn off gradually in the night, so you never have to worry whether you've left any lights on.

### Smart control



Connect your Philips Hue lights with the Bridge and start discovering the endless possibilities. Control your lights from your smartphone or tablet via the Philips Hue app, or add switches to your system to activate your lights. Set timers, notifications, alarms and more for the full Philips Hue experience.

### Expand your ecosystem



You can connect up to 50 lights and 10 accessories to the Philips Hue Bridge (included). Simply begin with any of the available starter kits and start adding Philips Hue products. You can then control your lights at the swipe of a finger with the intuitive Philips Hue app for iOS and Android smart devices. Philips Hue is based on ZigBee, a low-power, safe and reliable technology to control your lights. New features and improvements are continuously added to the system. Updates to both software and firmware are made wirelessly and seamlessly directly to your Philips Hue product.

### Works with Apple HomeKit



The Philips Hue White and colour ambience starter kit is compatible with Apple HomeKit technology. Ask Siri to turn on or dim your lights or recall presets without touching a single button. Via third-party apps you can even link your lights to other Apple HomeKit enabled devices.

## Specifications

### Also tested on

- Android: 2.3 or later
- Google Nexus: 5, 7
- HTC: One
- Motorola Nexus: 6
- Note: Note, Note 2, Note 3, Note 4
- OnePlus: One
- Samsung Galaxy: S2, S3, S4, S5
- Sony: Xperia Z3

### Environmental

- Operational humidity: 0%<H<80% (non-condensing)
- Operational temperature: 0°C - 40°C

### Guarantee

- 2 years: Yes

### The bridge

- Diameter: 100 mm
- Frequency band: 2400–2483.5 MHz
- Height: 25 mm
- Max. number of accessories: 10
- Max. number of bulbs: 50
- Mounting options: Desktop, Wall
- Power adapter: 100–240 V AC / 50–60 Hz, Output voltage: 5 V DC 600 mA, Standby power: 0.1 W max
- Power consumption: 250mA max

### The bulb

- Fitting: E27 screw base fitting
- Form factor: A60
- Height: 110 mm
- Lifetime: 25,000 h
- Light output: Functional white light, From warm to cold white colour, 16 million colours, Beam angle - 160° +- 20°, Dimmable via smart device only, All shades of white
- Lumen output: 806 lm @ 4000K, 342 lm @ 2000K, 550 lm @ 6500K, 570 lm @ 3000K, >80 CRI from 2000–4000K, 80 lm/W efficacy @4000K
- Software upgradable: Yes
- Start up: Instant 100% light output
- Wattage: 9 W
- Width: 62 mm

### What's in the box

- Bridge: 1
- Ethernet network cable: 1
- Hue bulbs: 3
- Power adapter: 1

### What's supported

- HomeKit compatible: iOS 9 or later
- IOS: 7 or later
- iPad: 2, 3rd and 4th generation
- iPad Air: 1, 2
- iPad Mini: 1, 2, 3
- iPhone: 4, 4S, 5, 5S, 6, 6 Plus
- iPod Touch: 5th generation

### Packaging dimensions and weight

- EAN/UPC – Case: 8718696461549
- SAP Gross Weight EAN (Piece): 0.000 kg
- Net Weight (Piece): 0.203 kg
- SAP Length (Piece): 0.000
- SAP Width (Piece): 0.000



Issue date: 2019-04-01  
Version: 0.261

© 2019 Signify Holding. All rights reserved. Signify does not give any representation or warranty as to the accuracy or completeness of the information included herein and shall not be liable for any action in reliance thereon. The information presented in this document is not intended as any commercial offer and does not form part of any quotation or contract, unless otherwise agreed by Signify. Philips and the Philips Shield Emblem are registered trademarks of Koninklijke Philips N.V.

[www.lighting.philips.com](http://www.lighting.philips.com)