

# PHILIPS

## Dimmer switch

Hue

Wireless installation

Automates your lights

8718696752043



## Control your lights

Enrich your system with the Philips Hue dimmer switch and enjoy smooth wireless dimming. The switch works as a normal wall switch and dimmer. Place it anywhere you want, using screws or the adhesive tape on the back plate of the switch.

### Easy control

- Use as a remote control
- Dim your Philips Hue lights
- Place it where it matters
- No wires – battery powered
- Switch between scenes
- Requires a Philips Hue bridge

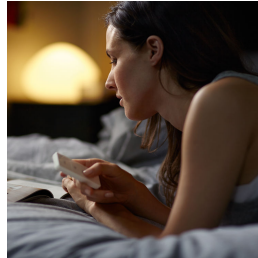
# Highlights

## Use as a remote control



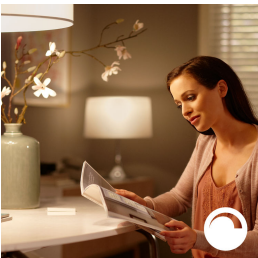
Pick up the remote and use it wherever you want for your comfort. The control unit of the switch is magnetic and can be removed from the base plate.

## No wires – battery powered



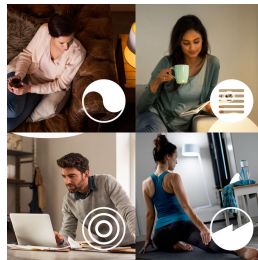
The Philips Hue dimmer switch is battery-powered, so there is no installation required

## Dim your Philips Hue lights



Using the Philips Hue dimmer switch, you can smoothly dim your favorite light setting up and down

## Switch between scenes



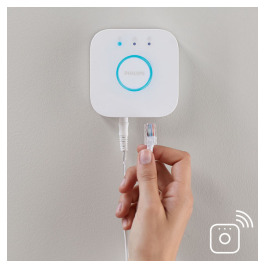
When using your dimmer switch with Philips Hue white ambiance or Philips Hue white and color ambiance products, you can use the on-button to switch between 4 light recipes, or use the Philips Hue app to configure your favorite 4 scenes. It's all up to you

## Place it anywhere



The Philips Hue dimmer switch works as a normal wall switch and dimmer. You can place it anywhere you want, using screws or the adhesive tape on the back plate of the switch

## Requires a Philips Hue bridge



This product requires a connection to the Philips Hue bridge

# Specifications

## Design and finishing

- Material: Synthetic

## Environmental

- Operational humidity: 5% <H<95% (non condensing)
- Operational temperature: -10°C – 45°C

## Extra feature/accessory incl.

- Portable: Yes

## Guarantee

- 2 years: Yes

## Service

- Warranty: 2 year(s)

## Technical specifications

- Number of configurable buttons: 2
- Weight: 37
- Battery type: CR – Button cell

## The switch

- Batteries included: 1 x CR2450
- Configurable buttons: 2
- Frequency band: 2400 – 2483.5 MHz
- IP rating: IP20
- Lifetime: 50000 clicks
- Max. lights per switch: 10 if not linked to Hue bridge
- Minimal battery lifetime: 3 year(s)
- Mounting options: wall, freestanding
- Software upgradeable: when connected to Hue bridge
- Switch depth: 11 mm
- Switch height: 92 mm
- Switch width: 35 mm
- Wall plate depth: 14 mm
- Wall plate height: 115 mm
- Wall plate width: 70 mm
- Weight including wall plate: 67 g
- Weight of switch: 37 g
- Zigbee Light link: IEEE 802.15.4 Protocol
- Minimal range indoor: 500 inch

## What's in the box

- Hue dimmer switch: 1

## What's supported

- HomeKit compatible: Yes
- Philips Hue App: IOS 15 and above, Android 10.0 and above
- Voice assistants: Amazon Alexa, Google Assistant, Apple HomeKit (Via Hue Bridge), Microsoft Cortana (Via Hue Bridge)

## Packaging dimensions and weight

- EAN/UPC – product: 8718696752043
- Net weight: 0.1 kg
- Gross weight: 0.15 kg
- Height: 16.5 cm
- Length: 5.5 cm
- Width: 8.8 cm
- Material number (12NC): 929001173764



Issue date: 2024-02-04  
Version: 0.442

© 2024 Signify Holding. All rights reserved. Signify does not give any representation or warranty as to the accuracy or completeness of the information included herein and shall not be liable for any action in reliance thereon. The information presented in this document is not intended as any commercial offer and does not form part of any quotation or contract, unless otherwise agreed by Signify. Philips and the Philips Shield Emblem are registered trademarks of Koninklijke Philips N.V.

[www.lighting.philips.com](http://www.lighting.philips.com)