

Office Lum/LED办公灯具

SM100C

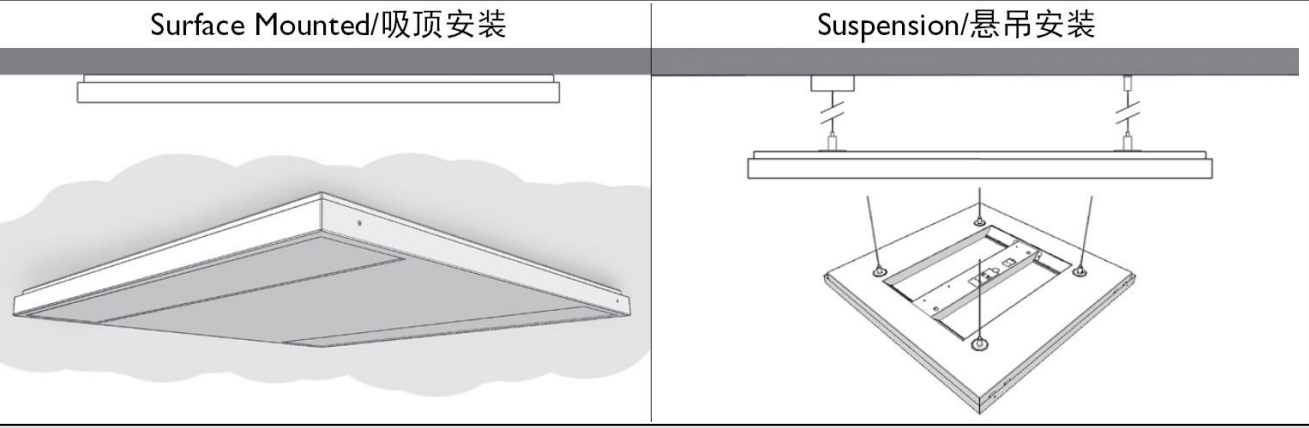
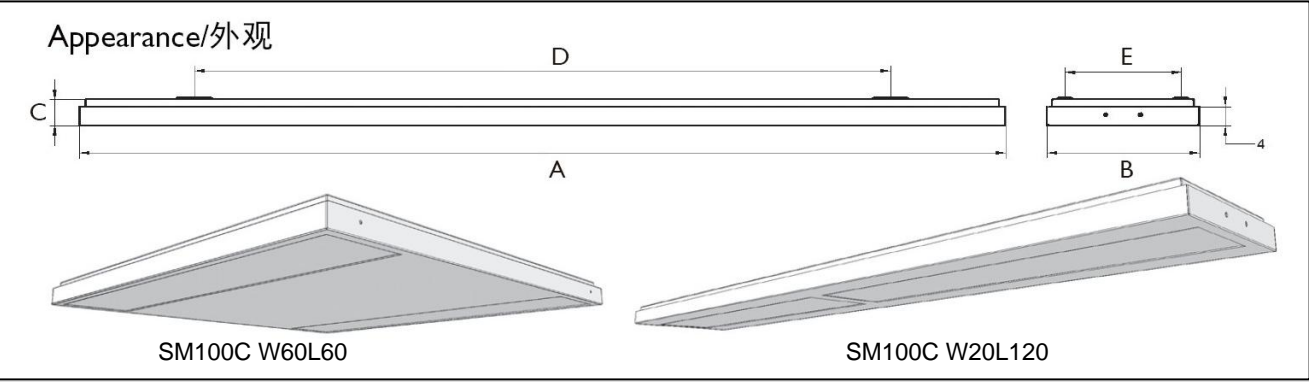
Mounting instruction/ 安装说明


SM100C-M010a



Type Desc 型号描述	Power(W) 灯具功率	A (mm)	B (mm)	C (mm)	D (mm)	E (mm)	CCT 色温	kg
SM100C LED25S PSU W60L60	27	597	597	36	380	380	3000K	4.4
SM100C LED25S PSU W20L120	27	1197	197	36	900	150	4000K	3.7
SM100C LED35S PSU W60L60	37	597	597	36	380	380	4000K	4.4
SM100C LED35S PSU W20L120	37	1197	197	36	900	150	6500K	3.7

Suspension Kit Accessory SM100Z SMS for suspension mounting. Kit to be purchased separately.




- 

1、The luminaire shall be installed by a qualified electrician and wired in accordance with the latest IEE electrical regulations or the national requirements
灯具应由有资格的电工安装，接线要符合IEE 电气标准或国家标准。

2、Do not switch on before complete installation.
接线过程中，切勿通电。

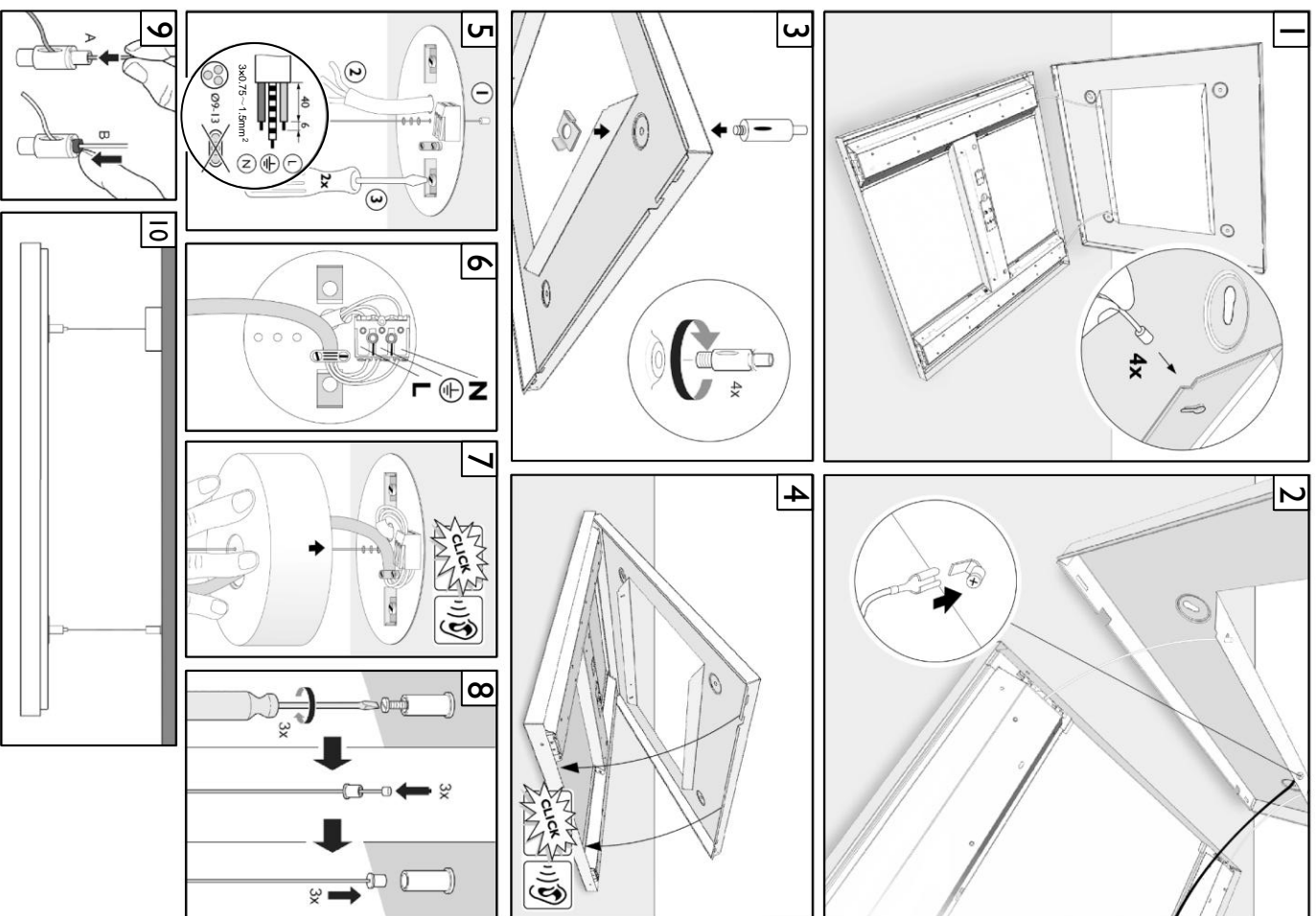
3、The luminaire is suitable for direct mounting on normally flammable material.
灯具适合于直接安装在普通可燃材料表面。

4、For indoor use only.
仅限于室内使用。
- 

Only to be installed outside arms reach.
This product is not for household use.

For non-user replaceable light sources:
“The Light source contained in this luminaire shall only be replaced by the manufacturer or his service agent or a similar qualified person ”

Suspension / 悬吊安装



Surface Mounted / 吸顶安装

